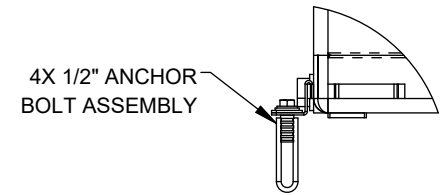
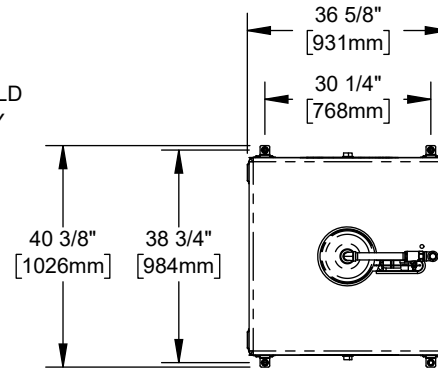


**NOTES:**

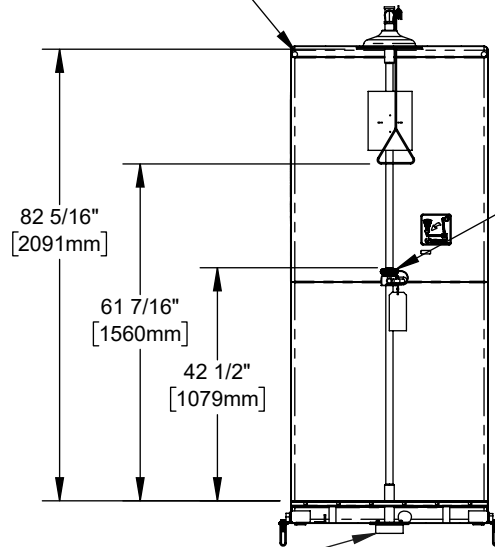
1. WHEN INSTALLING THIS UNIT, LOCAL, STATE, OR FEDERAL CODES SHOULD BE ADHERED TO FOR INSTALLATIONS (LOCATIONS), WASTE AND SUPPLY REQUIREMENTS OTHER THAN SHOWN.
2. KEEP ENTRY WAY AND INSIDE OF BOOTH CLEAR OF OBSTRUCTIONS.
3. DIMENSION MAY VARY  $\pm 1/2"$ .

(NOTES CONTINUED ON SHEET 2)

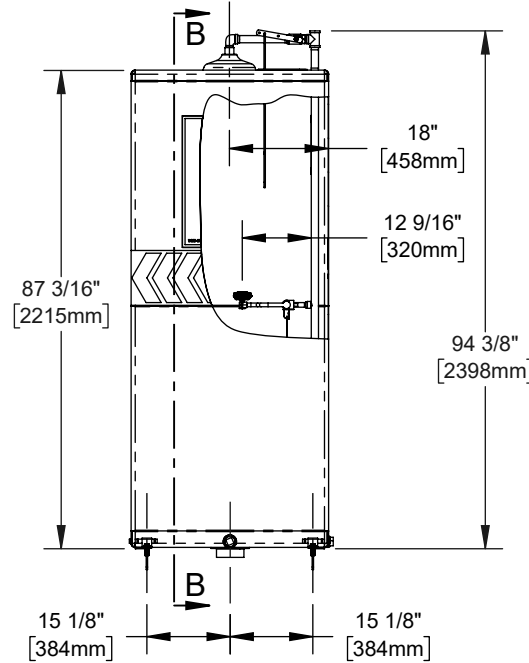


**DETAIL A**

INSTALL SHOWER CURTAIN TO GUIDE

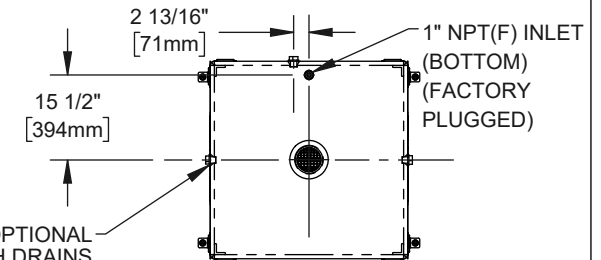
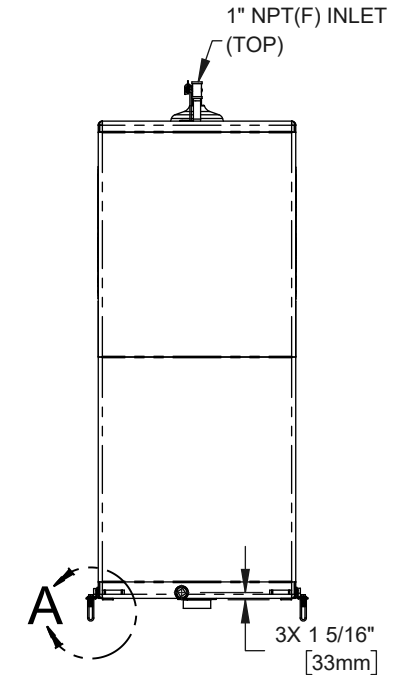


EYE/FACE WASH ASSEMBLY WITH 4.2 GPM FLOW CONTROL



**SECTION B-B**

OPTIONAL 4" NPT(F) WASTE SHOWN (SUPPLIED WITH COVER PLATE TO PLUG)

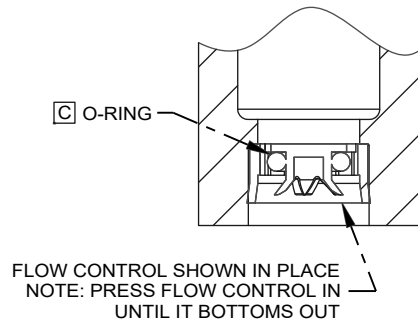
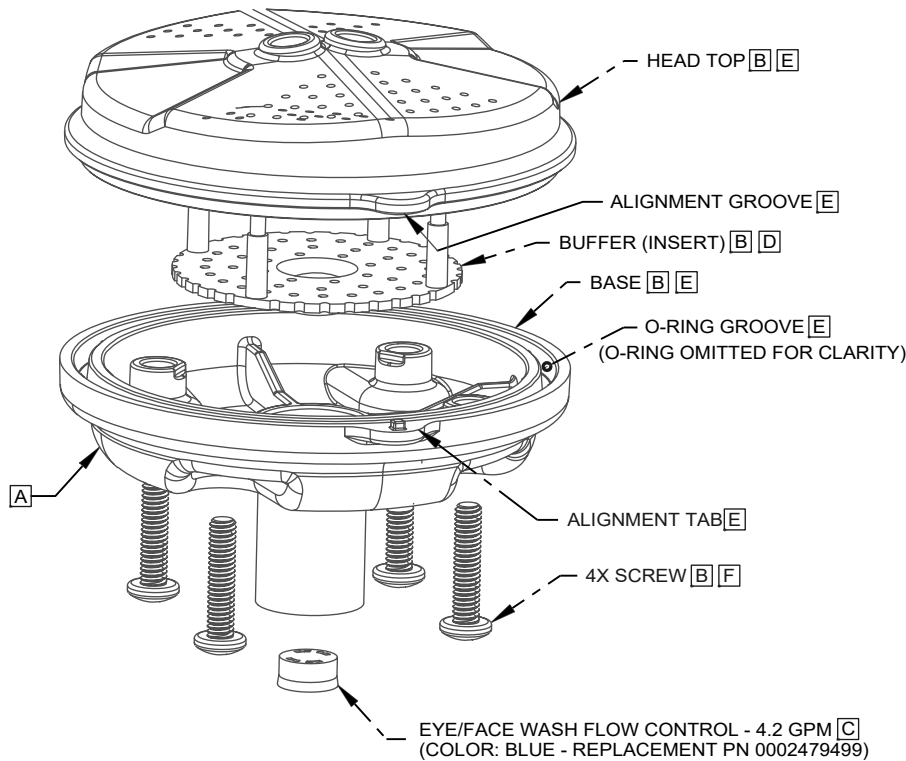


3X 1-1/2" NPT(F) OPTIONAL SIDE FLUSH DRAINS (SUPPLIED WITH PLUGS)

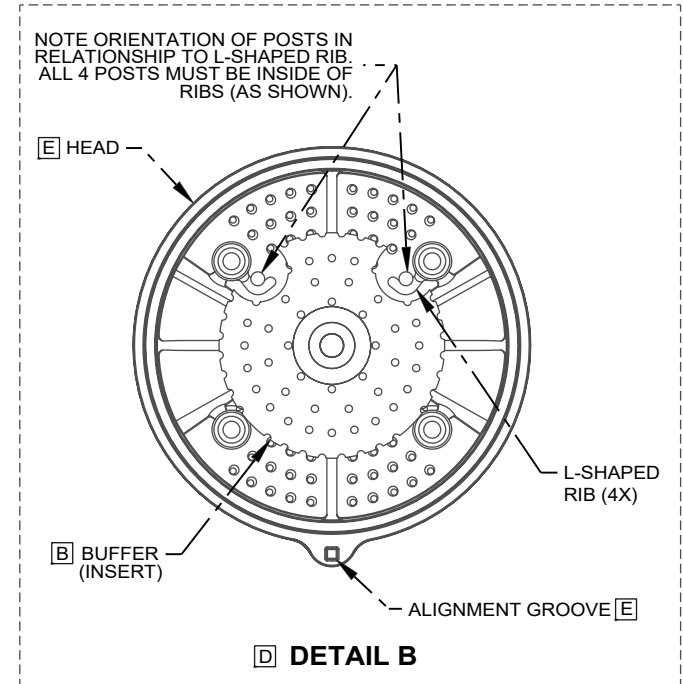
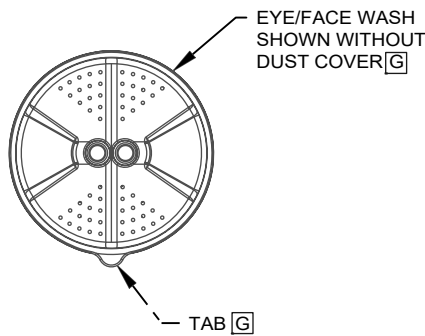
|   |                |             |                                   |   |  |  |  |
|---|----------------|-------------|-----------------------------------|---|--|--|--|
|  |                |             |                                   | 1455 KLEPPE LANE<br>SPARKS, NEVADA 89431<br>(775) 359-4712 FAX (775) 359-7424<br>E-MAIL: HAWS@HAWS.CO.COM<br>WEBSITE: WWW.HAWS.CO.COM |  |  |  |
| ECN: 6198   | REV. ECN: 6198 | BY: JL      | MODEL(S)                          | PART NUMBER 0510002299.D  |  |  |  |
| DRAWN: JL   | DATE: 03/04/25 | CHKD: FV    | 8605SS BOOTH WITH UNIVERSAL DRAIN | REVISION 1  |  |  |  |
| APPROVED: JL  | DATE: 03/12/25 | SCALE: 1:50 | DRAWING TYPE: INSTALLATION        | SHEET 1 OF 3  |  |  |  |

4. FLOW CONTROL CLEANING STEPS:

- [A] UNSCREW EYE/FACE WASH ASSEMBLY FROM ADAPTER (NOT SHOWN FOR CLARITY).
- [B] REMOVE SCREWS (QTY. 4) FROM EYE/FACE WASH ASSEMBLY IN ORDER TO SEPARATE EYE/FACE WASH HEAD TOP FROM THE BASE AND REMOVE BUFFER (INSERT).
- [C] REMOVE EXISTING FLOW CONTROL FROM BASE BY PUSHING IT OUT FROM THE TOP AND CAREFULLY REMOVE ANY DEBRIS LODGED BETWEEN O-RING AND HOUSING OR OPENINGS. ALSO, CHECK FOR ANY SEDIMENT OR MINERAL DEPOSITS BLOCKING OPENINGS. EXERCISE CAUTION NOT TO DAMAGE OR LOSE O-RING IN THE PROCESS. ALL OPENINGS ON FLOW CONTROL MUST BE FREE AND CLEAR OF ANY OBSTRUCTIONS FOR FLOW CONTROL TO FUNCTION PROPERLY. REINSTALL FLOW CONTROL. SEE **DETAIL A** FOR ORIENTATION.
- [D] REINSERT BUFFER (INSERT) INTO EYE/FACE WASH HEAD NOTING ORIENTATION OF POST IN RELATIONSHIP TO L-SHAPED RIB AS SHOWN ON **DETAIL B**.
- [E] REASSEMBLE EYE/FACE WASH HEAD, MAKING SURE THAT ALIGNMENT GROOVE ON EYE/FACE WASH HEAD LINES UP WITH ALIGNMENT TAB ON BASE & O-RING IS SEATED IN O-RING GROOVE.
- [F] REINSTALL SCREWS (QTY. 4) INTO THE EYE/FACE WASH HEAD ASSEMBLY AND TIGHTEN SNUG ENSURE A WATER-TIGHT SEAL.
- [G] REASSEMBLE EYE/FACE WASH ASSEMBLY (TAB ORIENTED TOWARDS THE BOTTOM IN CLOSED POSITION) - DO NOT OVER-TIGHTEN. PLACE DUST COVER OVER EYE/FACE WASH HEAD.



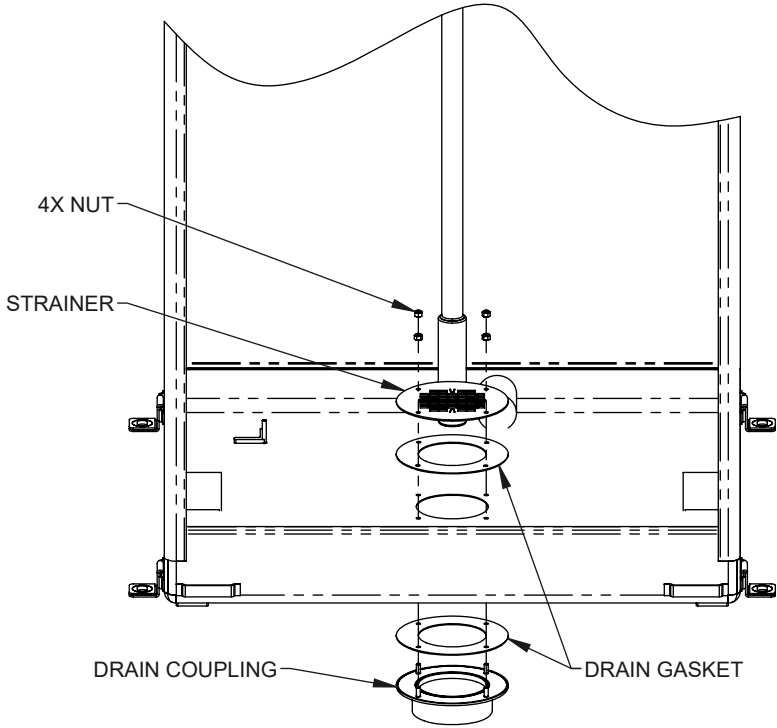
[C] **DETAIL A**



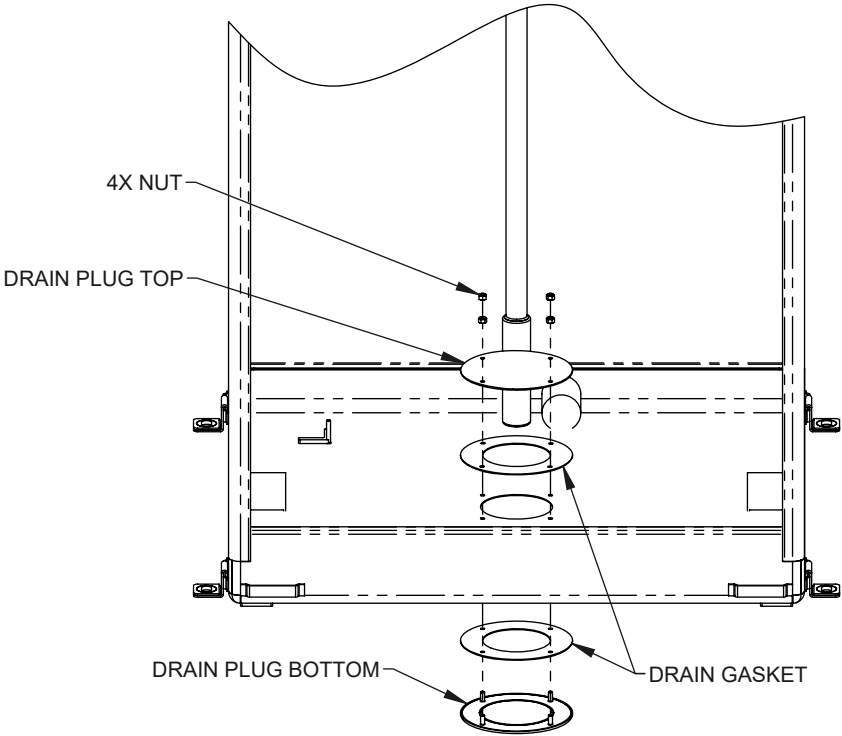
1455 KLEPPE LANE  
SPARKS, NEVADA 89431  
(775) 359-4712 FAX (775) 359-7424  
E-MAIL: HAWS@HAWSO.COM  
WEBSITE: WWW.HAWSO.COM

|              |                |             |                                   |              |
|--------------|----------------|-------------|-----------------------------------|--------------|
| ECN: 6198    | REV. ECN: 6198 | BY: JL      | MODEL(S)                          | PART NUMBER  |
| DRAWN: JL    | DATE: 03/04/25 | CHKD: FV    | 8605SS BOOTH WITH UNIVERSAL DRAIN | 0510002299.D |
| APPROVED: JL | DATE: 03/12/25 | SCALE: 1:18 | DRAWING TYPE: INSTALLATION        | REVISION     |
|              |                |             | SIZE: A                           | 1            |
|              |                |             |                                   | SHEET 2 OF 3 |

CENTER DRAIN CONFIGURATION DETAILS  
(GRATE REMOVED FOR CLARITY)



DRAIN COUPLING ASSEMBLY  
(ALL PARTS SUPPLIED)



DRAIN PLUG ASSEMBLY  
(ALL PARTS SUPPLIED)



1455 KLEPPE LANE  
SPARKS, NEVADA 89431  
(775) 359-4712 FAX (775) 359-7424  
E-MAIL: HAWS@HAWSO.COM  
WEBSITE: WWW.HAWSO.COM

|              |                |             |                            |              |
|--------------|----------------|-------------|----------------------------|--------------|
| ECN: 6198    | REV. ECN: 6198 | BY: JL      | MODEL(S)                   | PART NUMBER  |
| DRAWN: JL    | DATE: 03/04/25 | CHKD: FV    |                            | 0510002299.D |
| APPROVED: JL | DATE: 03/12/25 | SCALE: 1:32 | DRAWING TYPE: INSTALLATION | REVISION     |
|              |                |             |                            | 1            |
|              |                |             |                            | SHEET 3 OF 3 |