

FEATURES & BENEFITS

CONSTRUCTION

Rugged ADA accessible 18-gauge Type 304 Stainless Steel with satin finish bowls, 14 gauge Type 304 Stainless Steel bottle filler that resists stains and corrosion, soft rounded corners, stainless steel satin-finish back panels, vandal resistant bottom plate, and 1-1/4" integral trap.

BOTTLE FILLER

Vandal-resistant, 14-gauge Type 304 stainless steel bottle filler housing with touchless operation and 1 gpm (3.78L) laminar flow.

VANDAL RESISTANT

The bubbler heads, push buttons, sensor, drain strainers and bottom plates are locked in place, discouraging unwanted vandalism, and 30-second obstruction time-out to reduce tampering of sensor.

BUBBLER HEADS

Polished chrome-plated brass bubbler head with integral 11/16" dia. basin shank and stainless anti-rotation roll pin for vandal resistance strength. Shielded, angled stream opening provides a steady, sanitary source of drinking water at .45 gpm.

FOUNTAIN VALVES

Bottle filler incorporates a touchless sensor operated stainless steel solenoid valve controlled by a transformer, and push-button activated valves which offer the only all stainless-steel valve body that is machined out of solid bar stock and is fully serviceable through the front of the push button assembly offering access to the water control cartridge and integral water supply strainer on the fountain.

MOUNTING

Heavy-duty 16 gauge galvanized steel mounting frame with welded-in heavy-duty 10 gauge mounting plate with pre-punched mounting holes provides the sturdy hidden support needed for the Hi-Lo configuration of this unit, along with an in-wall 3/16" thick steel mounting plate for the bottle filler. Further convenience is given to the chiller with the integral fold-out shelf.

OPTIONS

- Water Filter: Model 6480 filter kit with 3000 gallon carbon block filter, filter head, and mounting bracket.
- Mounting Plate: Model 6700R, on-wall mounting plate for model 1920.

For more information, visit www.hawsco.com or call (888) 640-4297.



SPECIFICATIONS

H1119.8 / MTGFR.LG / HCR8 / 6469 / 1920HO / 6700 / BP32

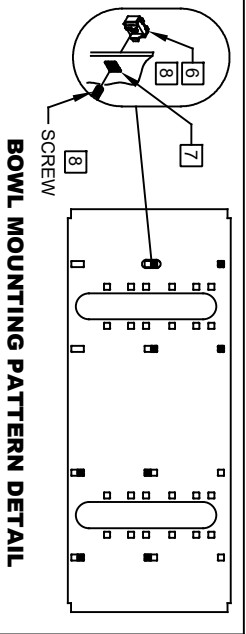
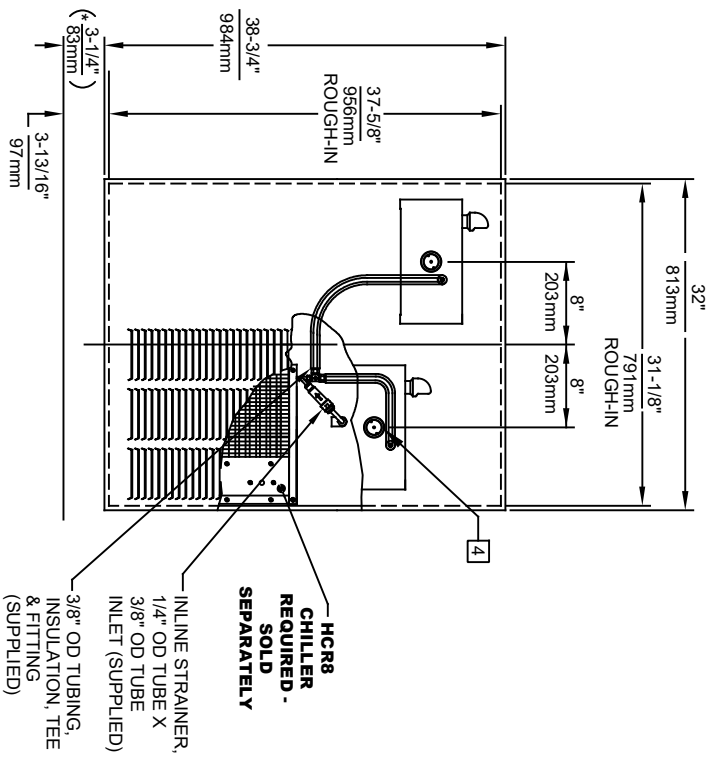
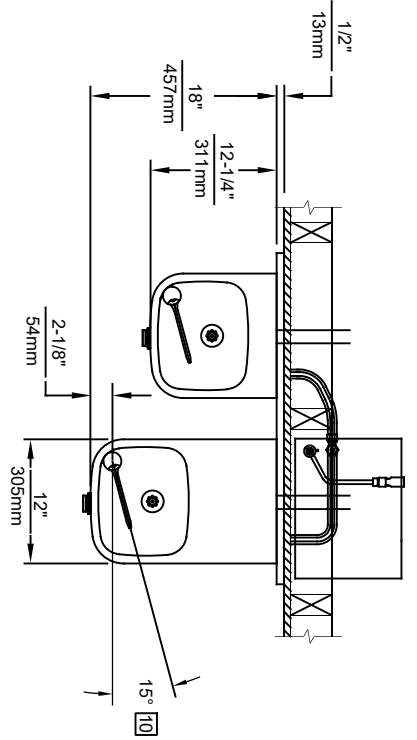
Order these items to make up the Model H1119.8-1920HO fountain with stainless steel back panel and grille, bottle filler with stainless steel back plate, and remote chiller shown above.

FOR INDOOR USE ONLY

APPLICATIONS

Model H1119.8-1920HO vandal-resistant wall-mounted ADA water cooler and motion activated bottle filler shall include dual 18-gauge Type 304 Stainless Steel satin-finish basins, 14 gauge bottle filler bracket, touchless sensor operated solenoid valve with 30-second obstruction time-out on the bottle filler, and push-button operated stainless-steel valves with front-accessible cartridge and flow adjustment on the fountains, in-line strainer and flow adjustment provide 100% lead free waterways, in-wall 3/16" thick steel mounting plate for the bottle filler, polished chrome-plated brass vandal-resistant bubbler heads, 1 gpm (3.78 L) laminar flow bottle filler, polished chrome-plated vandal-resistant waste strainers, vandal-resistant bottom plates, stainless steel satin-finish back panel and louvered intrusion-proof grill, high and low fountain mounting levels, and 1-1/4" NPT traps. The refrigeration system is hermetically sealed and delivers a minimum of 8 gph (30.3 L) of water at 50° F (10° C) cooled from 80° F (26.7° C) inlet water at 90° F (32.2° C) ambient. 115 Volts, 60Hz, rated watts: 370, full load amps: 5. Haws electric water coolers comply with ARI Standard 1010 and ANSI A117.1, and are listed by Underwriter Laboratories to U.S. and Canadian standards. Manufactured to be lead-free by all known definitions including NSF/ ANSI/CAN 61-Section 9, NSF/ANSI/ CAN 372, California Proposition 65, and the Federal Safe Drinking Water Act. Product is compliant to California Health and Safety Code 116875 (AB 1953-2006), and 116876 (AB 100) "NSF/ANSI/CAN 61: Q ≤ 1".

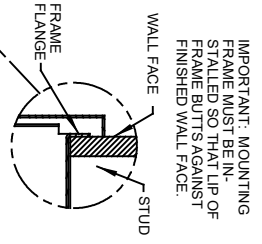
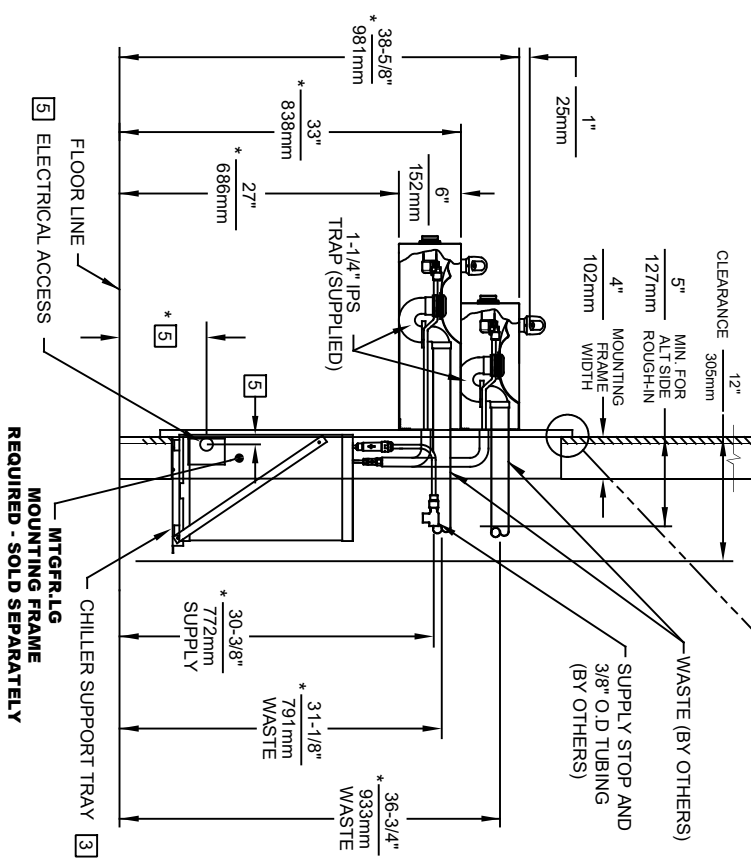




©2023 Haws Corporation - All Rights Reserved. HAWRS® and other trademarks used in these materials are the exclusive property of Haws Corporation.

NOTES:

1. HOLD ROUGH-IN DIMENSIONS ± 1/8" (3.2mm)
2. WHEN INSTALLING THIS UNIT, LOCAL, STATE OR FEDERAL CODES SHOULD BE ADHERED TO. FOR INSTALLATION HEIGHTS OTHER THAN SHOWN, DIMENSIONS MARKED (*) MUST BE ADJUSTED ACCORDINGLY.
3. ALIGN HOLES IN CHILLER SUPPORT TRAY WITH HOLES IN FRAME AND FASTEN WITH #10 SHEET METAL SCREWS.
4. REFER TO 5874 SERIES OPERATION AND MAINTENANCE MANUAL FOR PUSH BUTTON AND VALVE INSTALLATION/MAINTENANCE INSTRUCTIONS.
5. REFER TO MTGFR LG INSTALLATION DRAWING FOR ROUGH-IN DIMENSIONS.
6. INSERT 5/16"-18 PANEL INSERTS FROM OPPOSITE SIDE AT LOCATIONS SHOWN BY DARKENED HOLES. HOLE COMBINATIONS SHOWN ARE FOR USE WITH LOW FOUNTAIN ON THE RIGHT AND THE HI FOUNTAIN ON THE LEFT. USE OPPOSITE HOLES FOR HI ON RIGHT AND LOW ON LEFT.
7. HOLE COMBINATION SHOWN BELOW IS FOR USE WITH LOW FOUNTAIN ON THE RIGHT AND HIGH FOUNTAIN ON THE LEFT. USE OPPOSITE HOLES FOR HIGH ON RIGHT AND LOW ON LEFT.
8. TO CHANGE FOUNTAIN MTG. SCREW LOCATIONS: FIRST REMOVE SCREWS AND THEN SQUEEZE CLIPS ON NUT RETAINER TO POP OUT. SNAP INTO NEW POSITIONS AND RE-ASSEMBLE SCREWS.
9. IMPORTANT: A L.H. LOW (OPTIONAL) CONFIGURATION WILL REQUIRE A DIFFERENT BACK PANEL AND THE WASTE AND SUPPLY DIMENSIONS SHOWN (*) MUST BE REVERSED.
10. MAXIMUM ADJUSTABLE RANGE IS 15° FROM PARALLEL TO BACK WALL.



1456 KLEPPE LANE
SPARKS, NEVADA 89431
(775) 359-4712 FAX (775) 359-7424
E-MAIL: HAWRS@HAWSCO.COM
WEBSITE: WWW.HAWSCO.COM

ECN NO. REVISED PER BY:	MODEL(S)	PART NUMBER	INSTALLATION
ECN: 5993		0002080262.D	
DATE: 09/01/98	CHKD: KM	REVISION: 23	
APPROVED: 09/02/23	SCALE: 1:19	DRAWING TYPE:	SHEET 1 OF 1

CALLOUT LEGEND	
A	1/4" OD WATER OUTLET
B	3/8" OD WATER INLET
C	TEMPERATURE CONTROL
D	JUNCTION BOX
E	ELECTRICAL WIRING OPENING

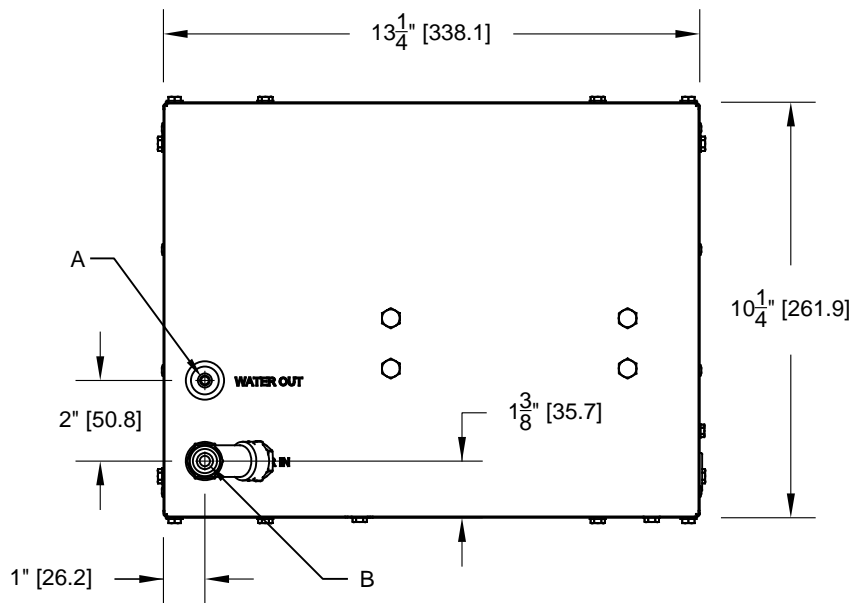


FIG. 2

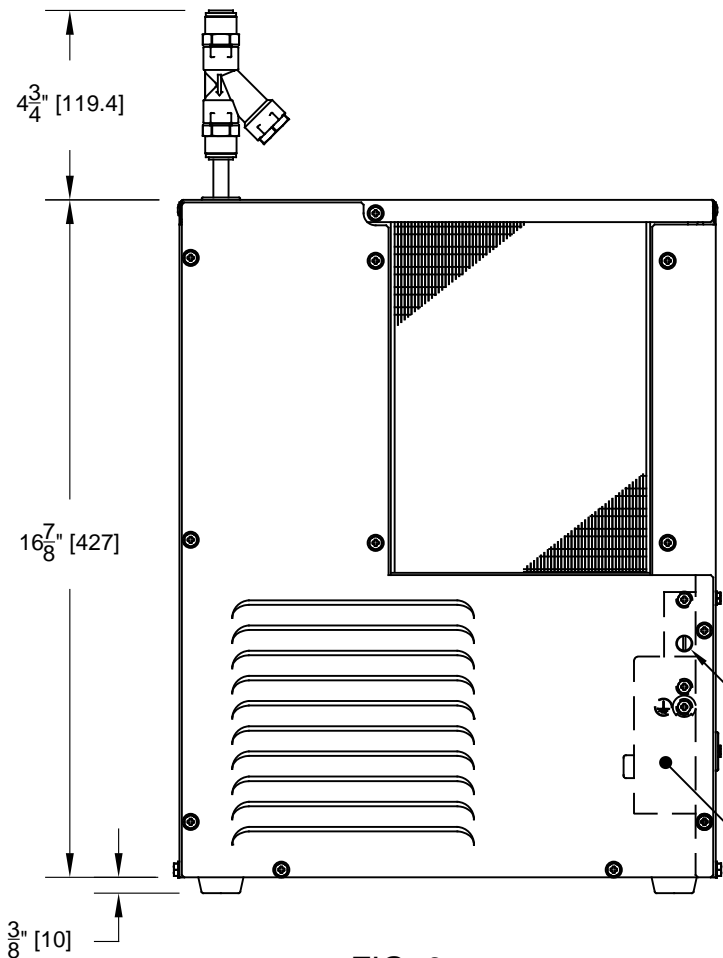


FIG. 3

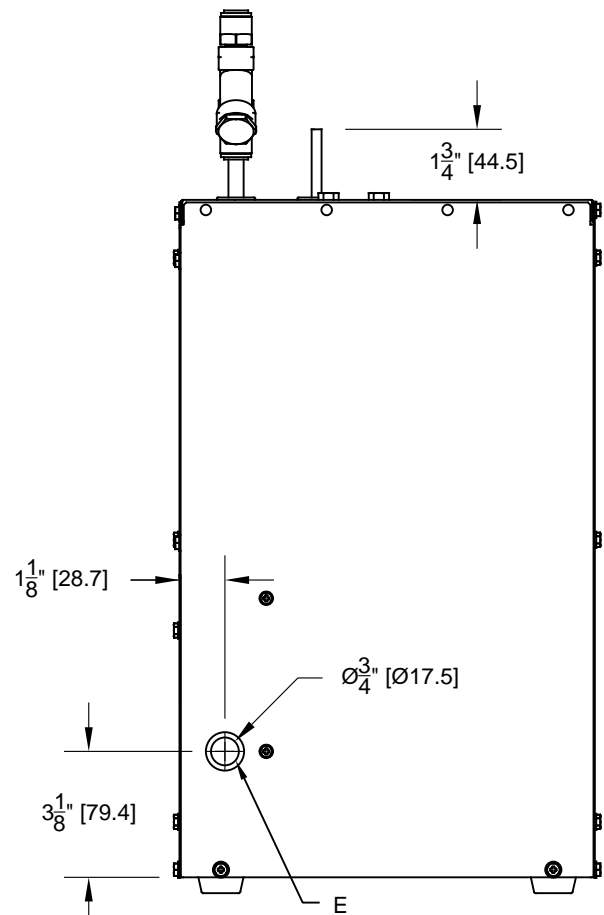


FIG. 4

		Haws [®]		1455 KLEPPE LANE SPARKS, NEVADA 89431 (775) 359-4712 FAX (775) 359-7424 E-MAIL: HAWS@HAWSCO.COM WEBSITE: WWW.HAWSCO.COM	
				ECN NO. 4997 DRAWN VVC APPROVED JL	REVISED PER BY ECN: 5401 DATE 01/25/16 DATE 02/05/19
SCALE: NA		DRAWING TYPE: INSTALLATION		SIZE: A	

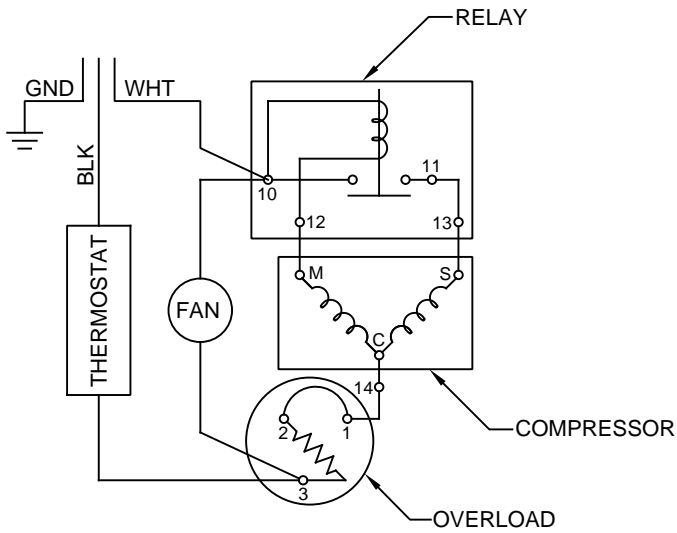


FIG. 5
WIRING DIAGRAM

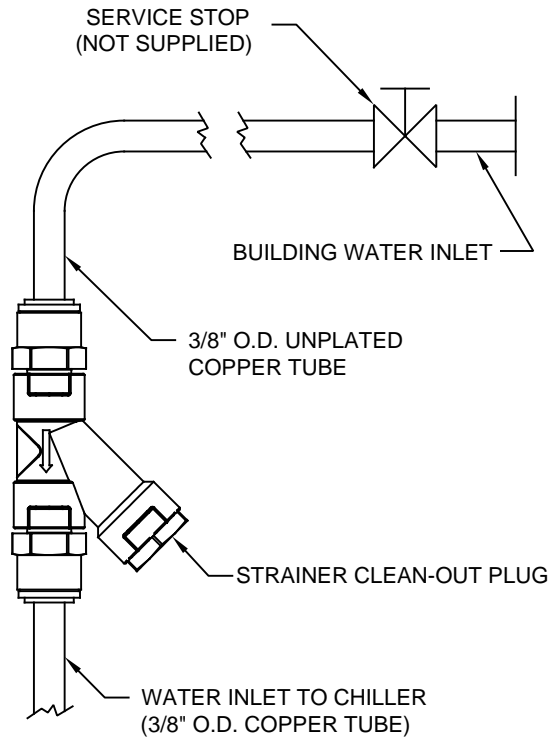
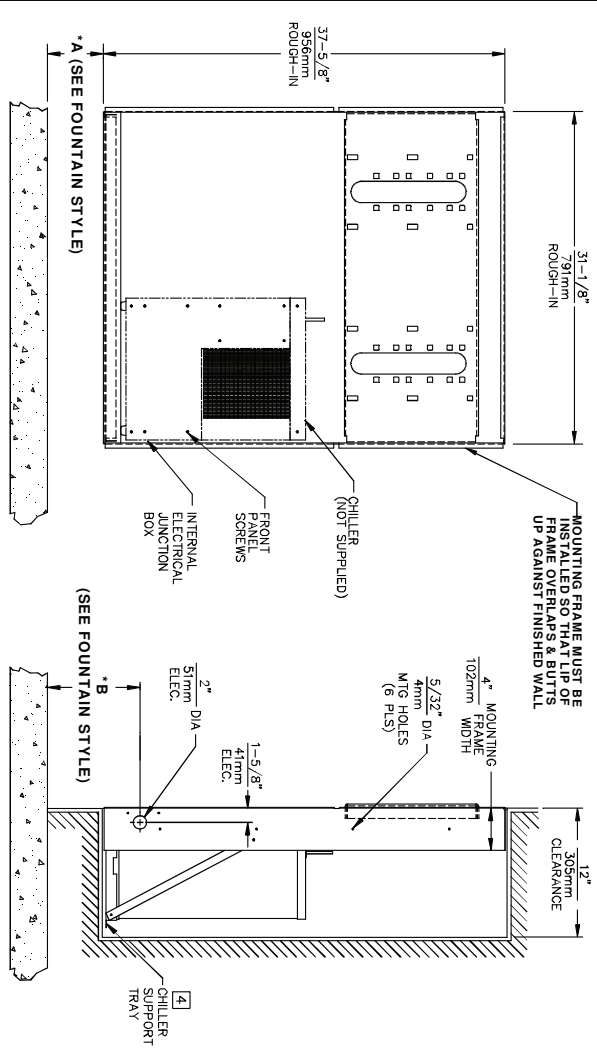


FIG. 6
WATER CONNECTION DIAGRAM

		1455 KLEPPE LANE SPARKS, NEVADA 89431 (775) 359-4712 FAX (775) 359-7424 E-MAIL: HAWS@HAWSCO.COM WEBSITE: WWW.HAWSCO.COM	
		ECN NO. 4997 DRAWN VWC APPROVED JL	REVISED PER ECN: 5401 DATE 01/25/16 DATE 02/05/19
PART NUMBER 0580000134.D			REVISION 4
SCALE: NA		DRAWING TYPE: INSTALLATION	SIZE: A SHEET 2 OF 2

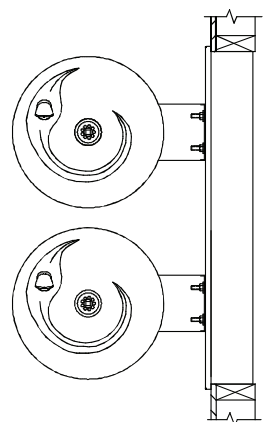
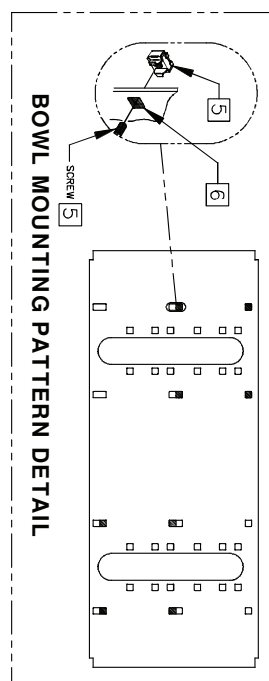
THIS DOCUMENT IS TRUE AND CORRECT AT TIME OF PUBLICATION. CONTINUED PRODUCT IMPROVEMENTS MAKE SPECIFICATIONS AND MEASUREMENTS SUBJECT TO CHANGE WITHOUT NOTICE.



- CHILLER ELECTRICAL INSTALLATION**
1. ENSURE ELECTRICAL POWER IS OFF AND POWER MATCHES VOLTAGE, PHASE AND CYCLE LISTED ON CHILLER LABEL.
 2. REMOVE FRONT PANEL TO GAIN ACCESS TO INTERNAL JUNCTION BOX.
 3. HARDWARE CHILLER THROUGH ITS SIDE, WIRE IN ACCORDANCE WITH LOCAL, STATE OR FEDERAL CODES.
 4. REPLACE FRONT PANEL. DO NOT APPLY POWER UNTIL WATER SUPPLY IS CONNECTED AND ON.

MOUNTING FRAME INSTALLATION

1. THIS FRAME IS USED WITH SEVERAL DIFFERENT MODELS. SEE INSTALLATION INSTRUCTIONS RECEIVED WITH THE FOUNTAIN FOR PROPER LOCATIONS OF 5/16-18 PANEL NUT RETAINERS. FOR ROUGH-IN USE THE APPROPRIATE DIMENSIONS SHOWN ABOVE. WASTE AND SUPPLY HEIGHTS ARE ALSO DETAILED ON THE FOUNTAIN INSTALLATION INSTRUCTIONS.
2. HOLD ROUGH-IN DIMENSIONS ±1/8" (3.2mm).
3. WHEN INSTALLING THIS UNIT LOCAL, STATE OR FEDERAL CODES SHOULD BE ADHERED TO. FOR DIFFERENT INSTALLATION HEIGHTS, OTHER THAN SHOWN, DIMENSIONS MARKED (*) MUST BE ADJUSTED ACCORDINGLY.
4. ALIGN HOLES IN CHILLER SUPPORT TRAY WITH HOLES IN FRAME AND FASTEN IN PLACE WITH #10 SHEET-METAL SCREWS SUPPLIED WITH UNIT.
5. FOUNTAIN REMOVAL: FIRST REMOVE SCREWS AND THEN SQUEEZE CLIPS ON NUT RETAINER TO POP OUT. INSTALL IS REVERSE OF REMOVAL.
6. HOLE COMBINATION SHOWN ABOVE IS FOR USE WITH LOW FOUNTAIN ON THE RIGHT AND HIGH FOUNTAIN ON THE LEFT. USE OPPOSITE HOLES FOR HIGH ON RIGHT AND LOW ON LEFT.
7. IMPORTANT: A L.H. LOW (OPTIONAL) CONFIGURATION WILL REQUIRE A DIFFERENT BACK PANEL AND THE WASTE AND SUPPLY DIMENSIONS SHOWN (*) MUST BE REVERSED.



* IF YOUR FOUNTAIN IS THIS STYLE USE THESE DIMENSIONS	
A	B
2-1/4" (57mm)	5-3/4" (146mm)

* IF YOUR FOUNTAIN IS THIS STYLE USE THESE DIMENSIONS	
A	B
3-15/16" (100mm)	7-7/16" (189mm)

Haws Corporation

INFO FAX : 1-888-FAX-HAWS (1-888-329-4297)

1455 Kieppe Ln, Sparks NY, 89451

Phone: 773-339-0112 Fax: 773-339-7424

Hawes Mfg. Bldg. 199 S. Wacker Drive, Chicago, IL 60606

Hawes Mfg. Bldg. 199 S. Wacker Drive, Chicago, IL 60606

e-mail: haws@hawsco.com website: www.hawsco.com

DATE: 06/97

SCALE: 1:16

MODEL(S): MTGFR/LG MOUNTING FRAME DUAL

INFO FAX DOC # 2654

REV. 1

DATE: 06/97

SCALE: 1:16

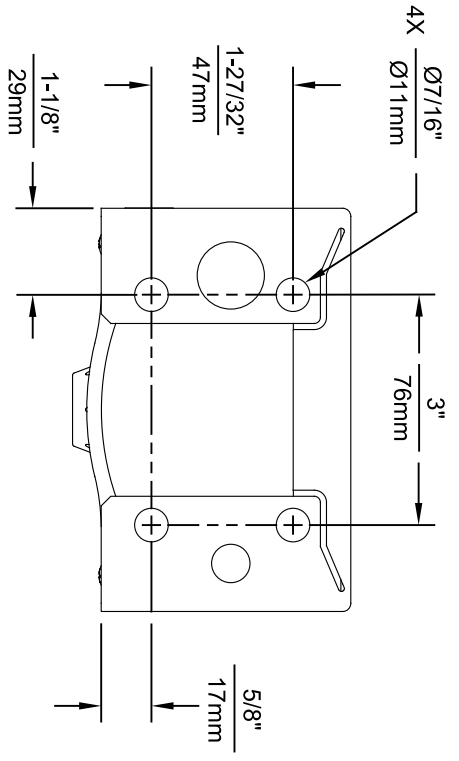
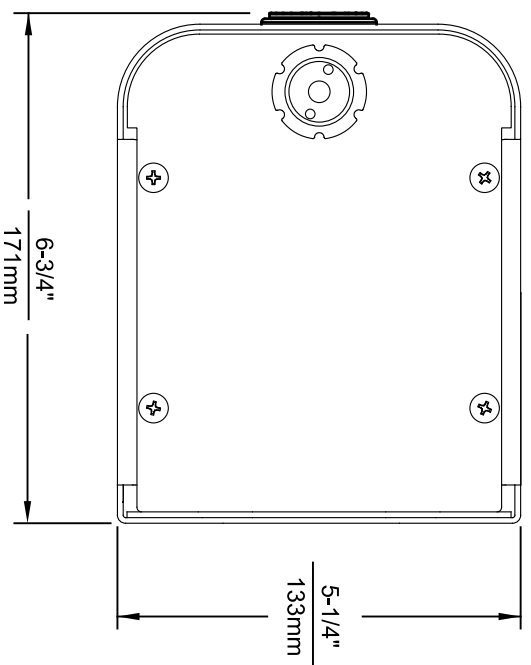
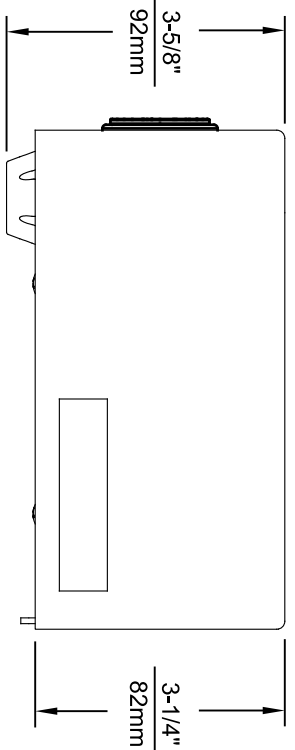
REV. 1

DATE: 06/97

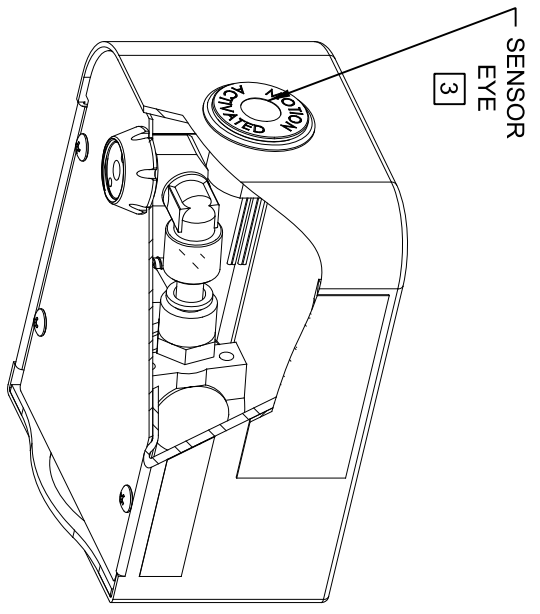
SCALE: 1:16

REV. 1

©2006 Haws Corporation - All Rights Reserved HAWS® and other trademarks used in these materials are the exclusive property of Haws Corporation.



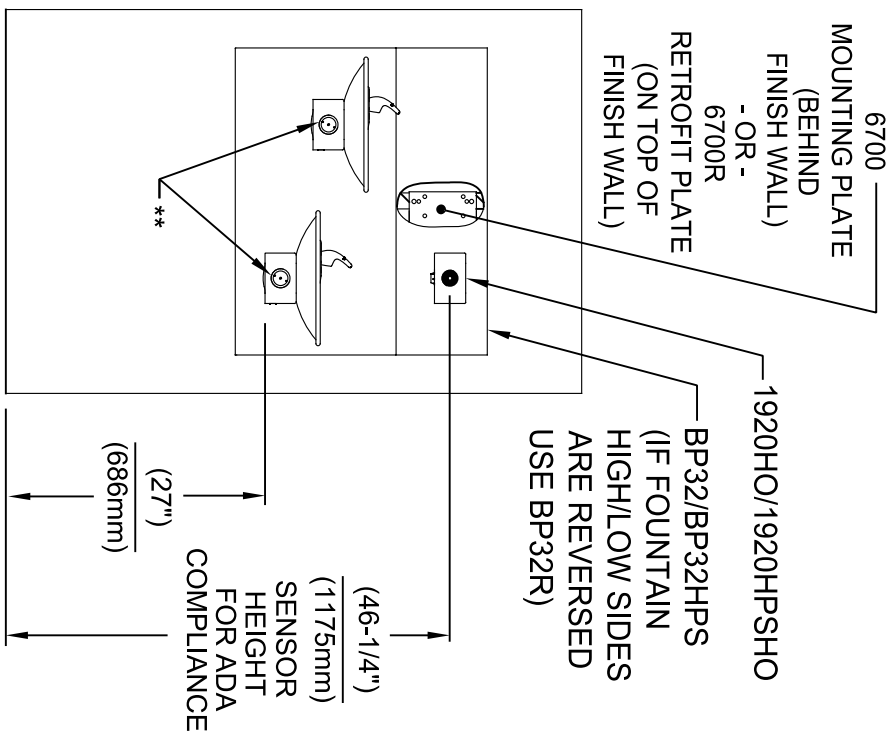
1920HO SERIES MOUNTING HOLE LOCATIONS
(3/8\"-16 UNC MOUNTING HARDWARE NOT SUPPLIED)



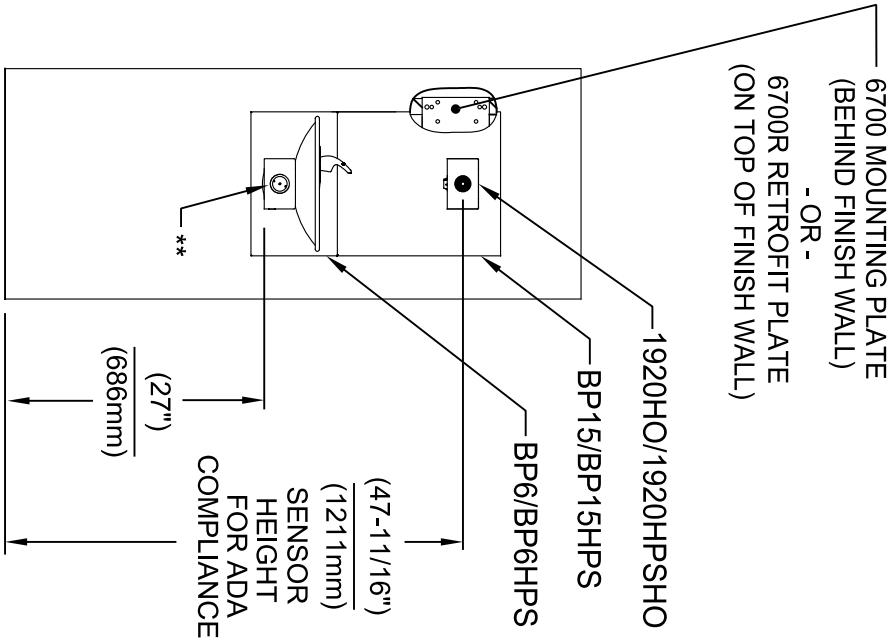
NOTES:

1. SEE SHEETS 2 THRU 7 FOR BOTTLE FILLER ADULT ADA HEIGHT APPLICATIONS AND SHEET 8 FOR CHILD ADA HEIGHT APPLICATIONS.
2. WHEN INSTALLING THIS UNIT, LOCAL, STATE OR FEDERAL CODES SHOULD BE ADHERED TO FOR INSTALLATION LOCATIONS, WASTE AND SUPPLY REQUIREMENTS OTHER THAN SHOWN.
- 3 REFER TO 1RKHO.H OPERATION & MAINTENANCE INSTRUCTIONS FOR SENSOR SETUP.

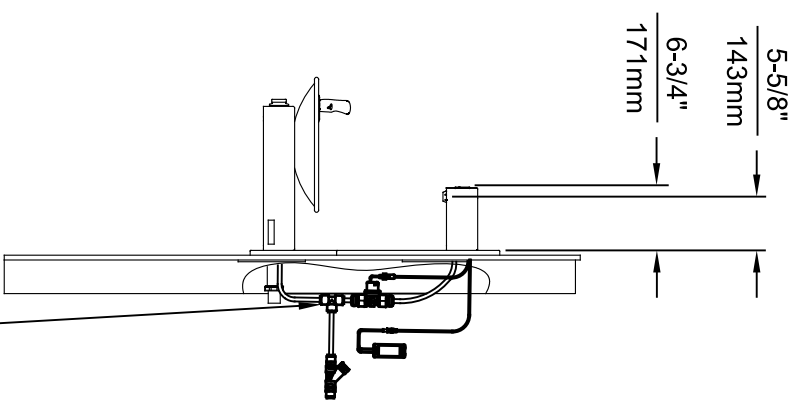
		1455 KLEPPLE LANE SPARKS, NEVADA 89431 (775) 359-4712 FAX (775) 359-7424 E-MAIL: HAWS@HAWS.CO.COM WEBSITE: WWW.HAWS.CO.COM	
EGN NO. REVISED PER BY: FV DRAWN: ECN: 6136 DATE: CHK'D: KM FV 08/18/20 KM	MODEL(S) 1920HO/1920HPSHO/1920WHO	SCALE: N/A DRAWING TYPE:	INSTALLATION:
APPROVED: FV DATE: 11/04/24	PART NUMBER 0510001063.D	SIZE: A1 SHEET: 1 OF 8	REVISION: 8



INSTALLATION ABOVE HAWS 1011 & H1011.8 SERIES

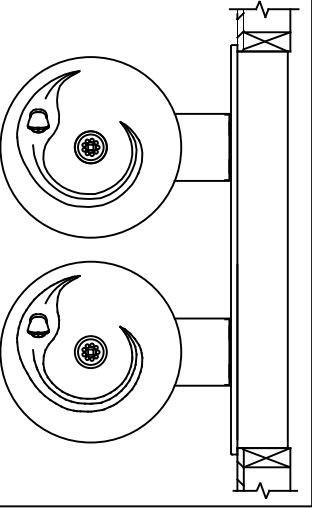


INSTALLATION ABOVE HAWS 1001 & H1001.8 SERIES



* IF YOUR FOUNTAIN IS THIS STYLE USE THESE DIMENSIONS

1. SEE SEPARATE INSTALLATION DRAWINGS FOR MOUNTING PLATES AND BACK PANELS (SHOWN FOR REFERENCE - NOT SUPPLIED).
2. WHEN INSTALLING THIS UNIT, LOCAL, STATE OR FEDERAL CODES SHOULD BE ADHERED TO FOR INSTALLATION LOCATIONS, WASTE & SUPPLY REQUIREMENTS OTHER THAN SHOWN.



** EXISTING PUSH BUTTON ASSEMBLY SHOWN, CAN BE CONVERTED TO HANDS OFF STYLE, USING RETRO-FIT KIT MODEL 1RKHO.H OR 2RKHO.H DEPENDING ON CUSTOMER REQUIREMENTS.

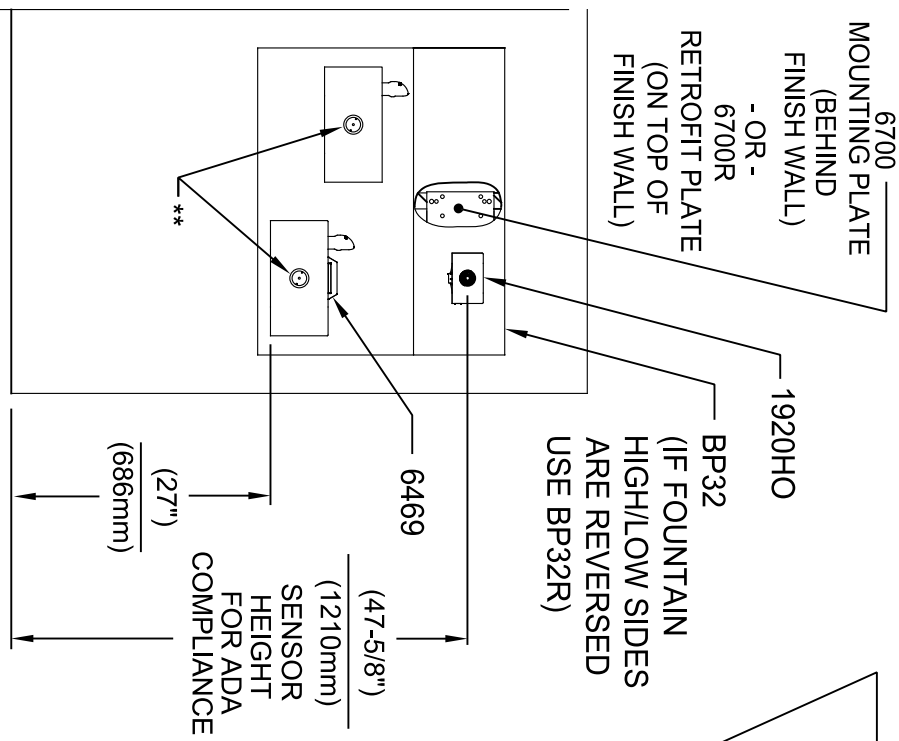
3/8" O.D. SUPPLY TUBING AND 3/8" O.D. PUSH-IN TEE SUPPLIED. (CONNECT TO FOUNTAIN SUPPLY LINE)



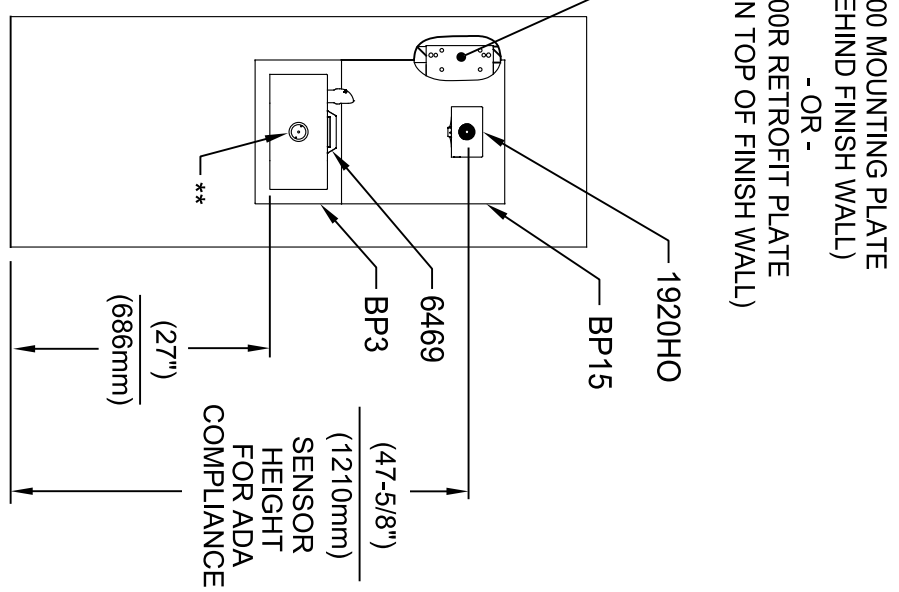
Haws
Since 1906

1455 KLEPPLE LANE
SPARKS, NEVADA 89431
(775) 359-4712 FAX (775) 359-7424
E-MAIL: HAWS@HAWSCO.COM
WEBSITE: WWW.HAWSCO.COM

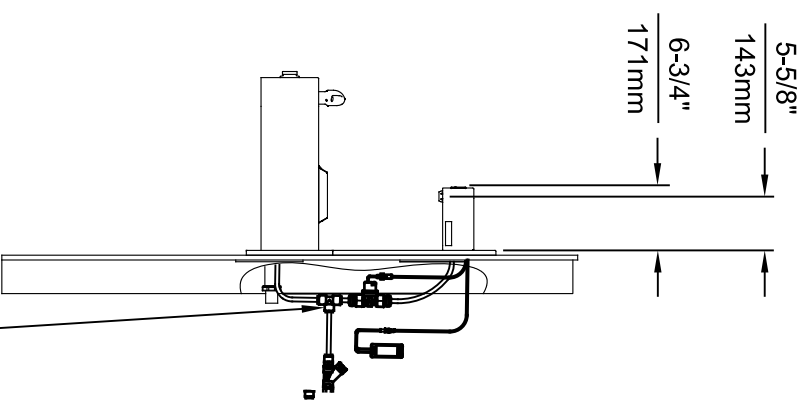
EGN NO. REVISED PER BY:	MODEL(S)	SCALE	DATE	INSTALLATION
5574 EGN: 6136 FV	1920HO/1920HPSHO/1920WHO	N/A	11/8/24	SIZE: A1 SHEET: 2 OF 8
DRAWN: FV	DATE: 08/18/20	CHK'D: KM	APPROVED: FV	
PART NUMBER	0510001063.D	REVISION	8	



INSTALLATION ABOVE HAWS 1119 & H1119.8 SERIES



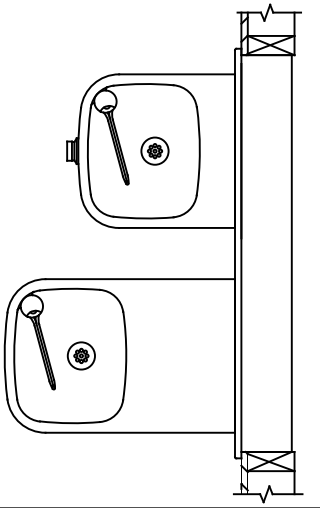
**INSTALLATION ABOVE HAWS 1109 & H1109.8 SERIES
SEE SHEET 8 FOR INSTALLATION AT CHILD HEIGHT**



* IF YOUR FOUNTAIN IS THIS STYLE USE THESE DIMENSIONS

1. SEE SEPARATE INSTALLATION DRAWINGS FOR MOUNTING PLATES, BACK PANELS AND DRIP TRAY (NOT SUPPLIED).

2. WHEN INSTALLING THIS UNIT, LOCAL, STATE OR FEDERAL CODES SHOULD BE ADHERED TO FOR INSTALLATION LOCATIONS, WASTE & SUPPLY REQUIREMENTS OTHER THAN SHOWN.



** EXISTING PUSH BUTTON ASSEMBLY SHOWN, CAN BE CONVERTED TO HANDS OFF STYLE, USING RETRO-FIT KIT MODEL 1RKHO.H OR 2RKHO.H DEPENDING ON CUSTOMER REQUIREMENTS.

3/8" O.D. SUPPLY TUBING AND 3/8" O.D. PUSH-IN TEE SUPPLIED. (CONNECT TO FOUNTAIN SUPPLY LINE)



1455 KLEPPLE PLANE

SPARKS, NEVADA 89431

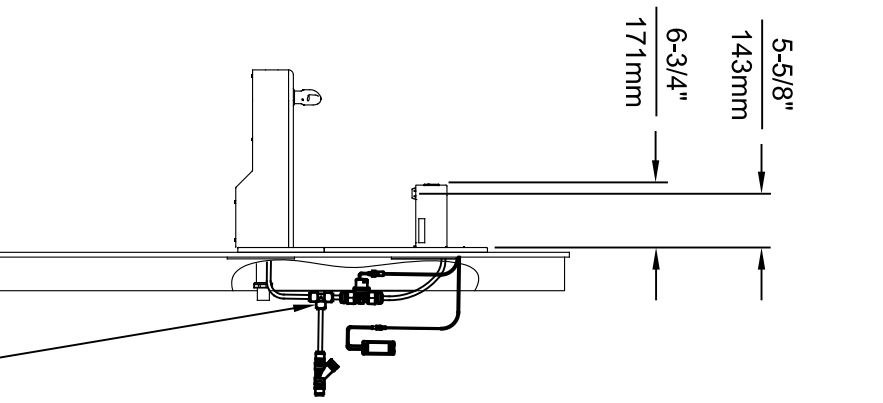
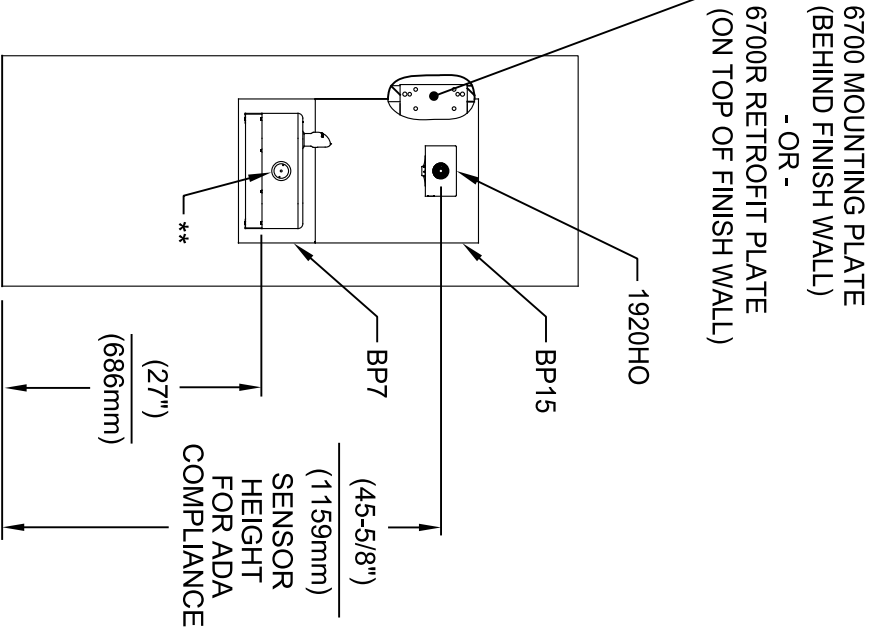
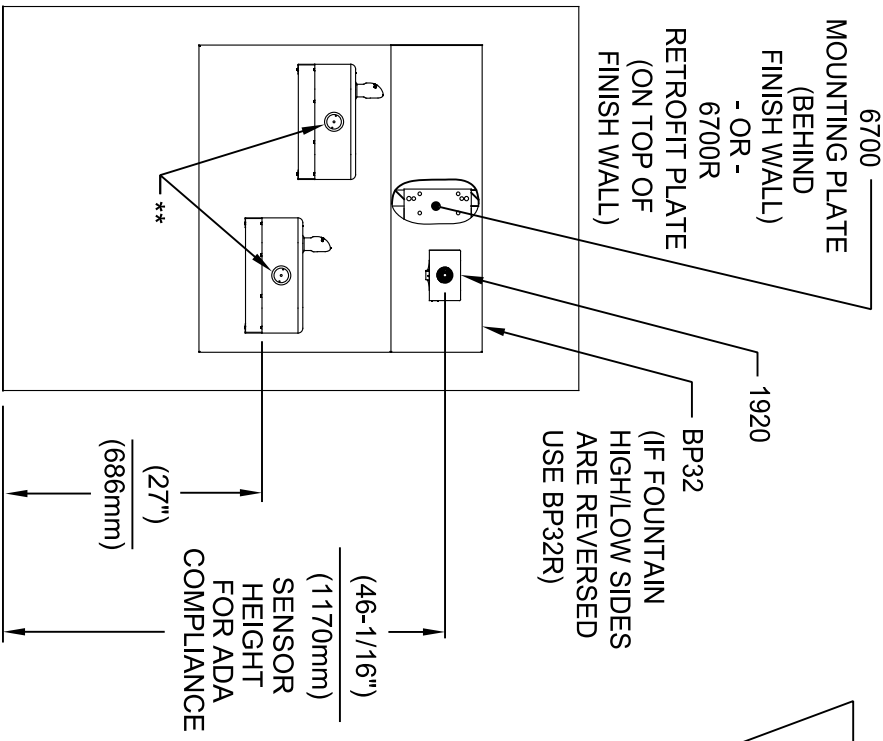
(775) 359-4712 FAX (775) 359-7424

E-MAIL: HAWS@HAWS.CO.COM

WEBSITE: WWW.HAWS.CO.COM

MODEL(S) 1920HO/1920HPSHO/1920WHO

EGN NO. REVISED PER BY:	DATE	SCALE	DATE	INSTALLATION
5574	08/18/20	N/A	11/9/24	
DRAWN:	CHK'D:			
FV	KM			
PART NUMBER	REVISION	SIZE	SHEET	OF
0510001063.D	8	A1	3	8



INSTALLATION ABOVE HAWS 1117L & H1117.8 SERIES

INSTALLATION ABOVE HAWS 1107L & H1107.8 SERIES

SEE SHEET 8 FOR INSTALLATION AT CHILD HEIGHT

* IF YOUR FOUNTAIN IS THIS STYLE USE THESE DIMENSIONS

1. SEE SEPARATE INSTALLATION DRAWINGS FOR MOUNTING PLATES AND BACK PANELS (SHOWN FOR REFERENCE - NOT SUPPLIED).
2. WHEN INSTALLING THIS UNIT, LOCAL, STATE OR FEDERAL CODES SHOULD BE ADHERED TO FOR INSTALLATION LOCATIONS, WASTE & SUPPLY REQUIREMENTS OTHER THAN SHOWN.



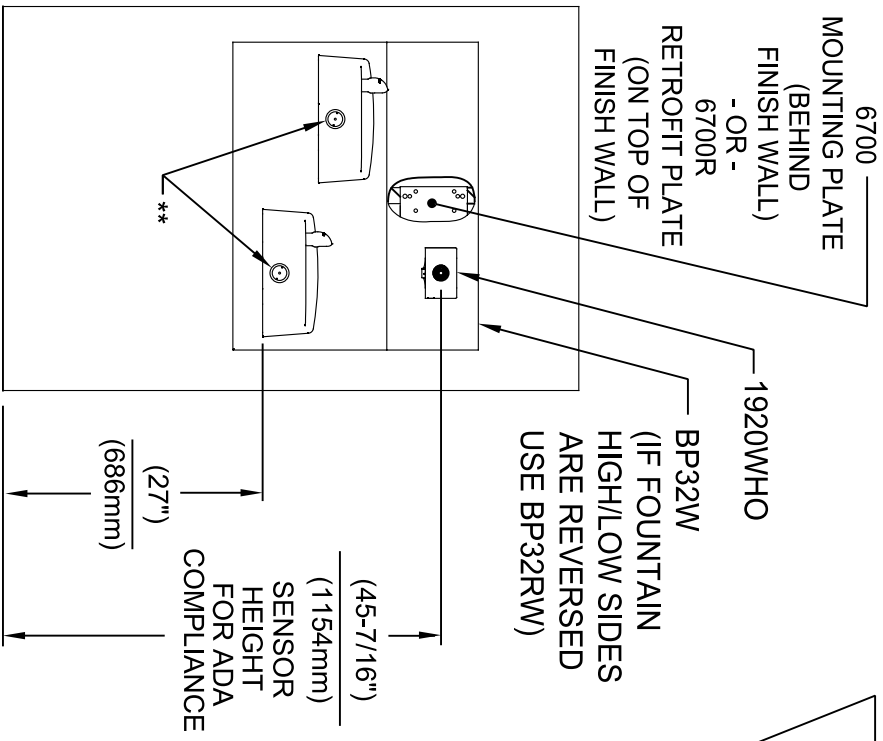
** EXISTING PUSH BUTTON ASSEMBLY SHOWN, CAN BE CONVERTED TO HANDS OFF STYLE, USING RETRO-FIT KIT MODEL 1RKHO.H OR 2RKHO.H DEPENDING ON CUSTOMER REQUIREMENTS.

3/8" O.D. SUPPLY TUBING AND 3/8" O.D. PUSH-IN TEE SUPPLIED. (CONNECT TO FOUNTAIN SUPPLY LINE)

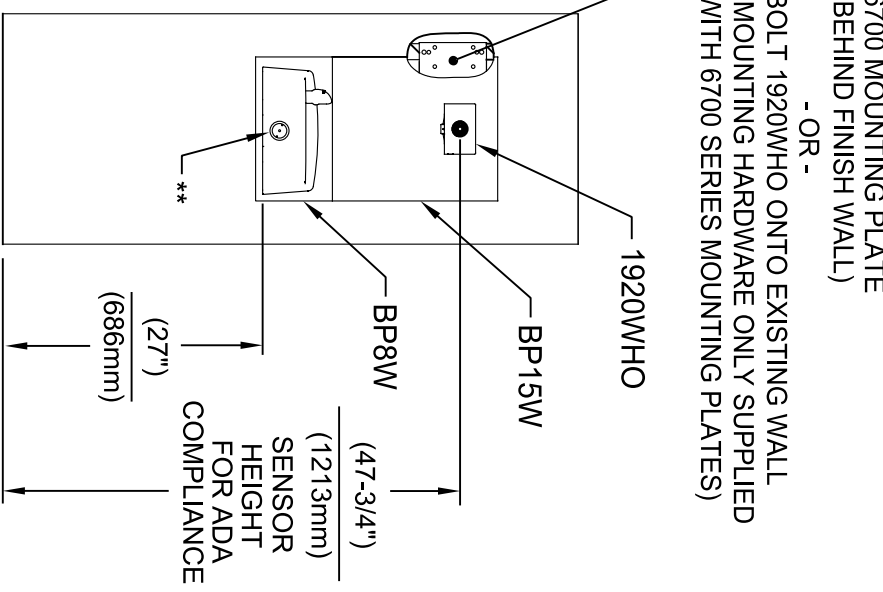


1455 KLEPPLELANE
SPARKS, NEVADA 89431
(775) 359-4712 FAX (775) 359-7424
E-MAIL: HAWS@HAWS.CO.COM
WEBSITE: WWW.HAWS.CO.COM

EGN NO. REVISED PER BY:	MODEL(S)	SCALE	DATE	DATE	SCALE	DATE	DATE	SCALE	DATE
5574 EGN: 6136	1920HO/1920HPSHO/1920WHO	N/A	11/9/24	08/18/20	N/A	11/9/24	08/18/20	N/A	11/9/24
DRAWN: FV									
CHKD: KM									
APPROVED: FV									
PART NUMBER	0510001063.D	REVISION	8	SIZE	A1	SHEET	4	OF	8

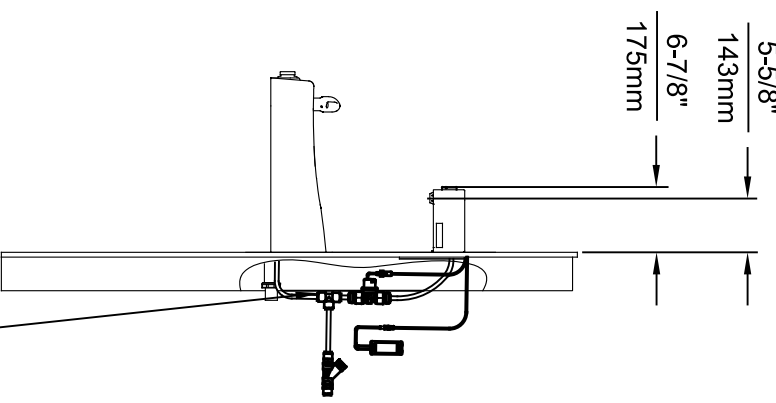


INSTALLATION ABOVE HAWS 1501



INSTALLATION ABOVE HAWS 1311

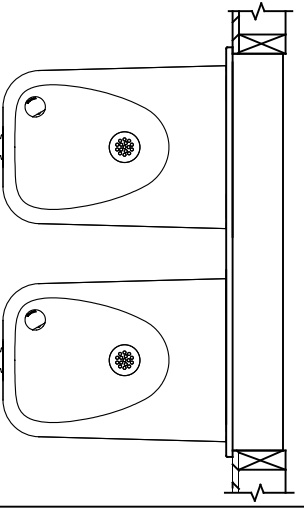
SEE SHEET 8 FOR INSTALLATION AT CHILD HEIGHT



3/8" O.D. SUPPLY TUBING AND 3/8" O.D. PUSH-IN TEE SUPPLIED. (CONNECT TO FOUNTAIN SUPPLY LINE)

* IF YOUR FOUNTAIN IS THIS STYLE USE THESE DIMENSIONS

1. SEE SEPARATE INSTALLATION DRAWINGS FOR MOUNTING PLATES AND BACK PANELS (SHOWN FOR REFERENCE - NOT SUPPLIED).
2. WHEN INSTALLING THIS UNIT, LOCAL, STATE OR FEDERAL CODES SHOULD BE ADHERED TO FOR INSTALLATION LOCATIONS, WASTE & SUPPLY REQUIREMENTS OTHER THAN SHOWN.



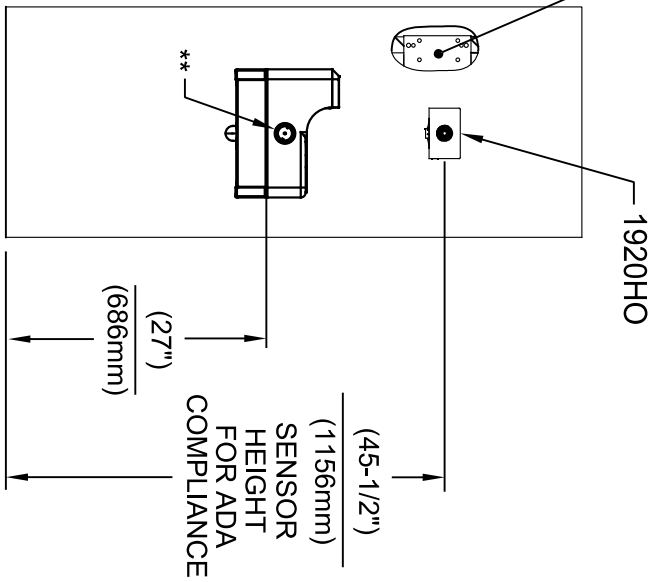
** EXISTING PUSH BUTTON ASSEMBLY SHOWN. CAN BE CONVERTED TO HANDS OFF STYLE, USING RETRO-FIT KIT MODEL 1RKHO.H OR 2RKHO.H DEPENDING ON CUSTOMER REQUIREMENTS.

Haws
Since 1906

1455 KLEPPLE LANE
SPARKS, NEVADA 89431
(775) 359-4712 FAX (775) 359-7424
E-MAIL: HAWS@HAWSCO.COM
WEBSITE: WWW.HAWSCO.COM

ECON. NO.	REVISED PER BY:	MODEL(S)	SCALE	DATE	DATE	SCALE	DATE	DATE	SCALE	DATE
5574	ECON. 6136	1920HO/1920HPSHO/1920WHO	N/A	11/04/24						
DRAWN:	DATE:	CHK'D:	DRAWING TYPE:	INSTALLATION:	SIZE:	A1	SHEET:	5	OF:	8
FV	08/18/20	KM								
PART NUMBER 0510001063.D										
REVISION 8										

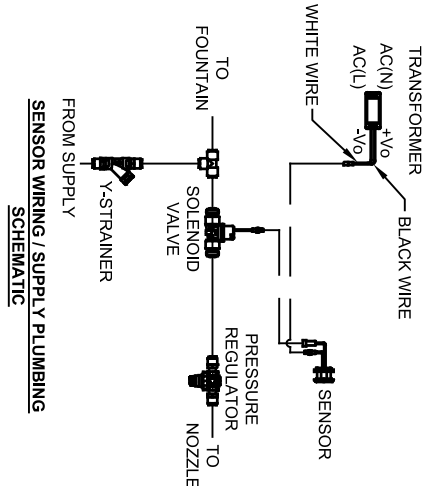
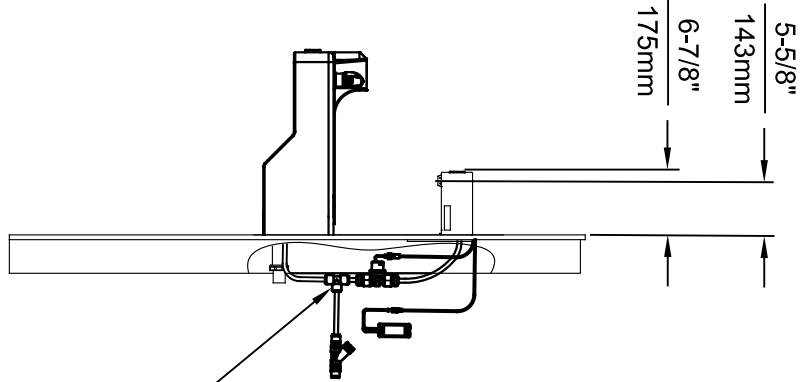
6700 MOUNTING PLATE
(BEHIND FINISH WALL)
- OR -
BOLT 1920HO ONTO EXISTING WALL
(MOUNTING HARDWARE ONLY SUPPLIED
WITH 6700 SERIES MOUNTING PLATES)



INSTALLATION ABOVE HAWS 1047

* IF YOUR FOUNTAIN IS THIS STYLE USE THESE DIMENSIONS

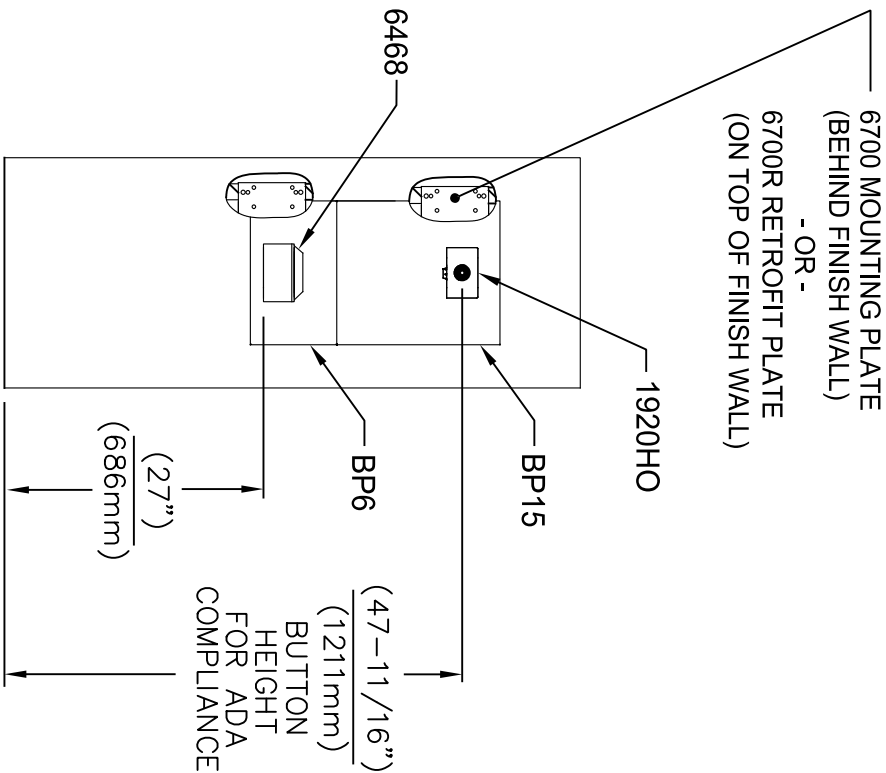
1. SEE SEPARATE INSTALLATION DRAWINGS FOR MOUNTING PLATES AND BACK PANELS (SHOWN FOR REFERENCE - NOT SUPPLIED).
2. WHEN INSTALLING THIS UNIT, LOCAL, STATE OR FEDERAL CODES SHOULD BE ADHERED TO FOR INSTALLATION LOCATIONS, WASTE & SUPPLY REQUIREMENTS OTHER THAN SHOWN.



3/8" O.D. SUPPLY TUBING AND 3/8" O.D. PUSH-IN TEE SUPPLIED. (CONNECT TO FOUNTAIN SUPPLY LINE)

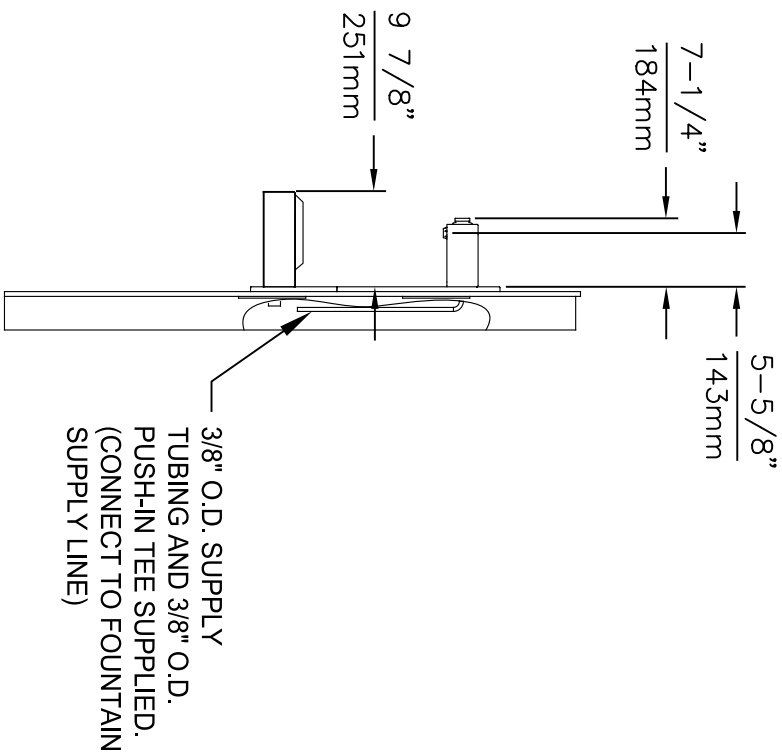
** EXISTING PUSH BUTTON ASSEMBLY SHOWN, CAN BE CONVERTED TO HANDS OFF STYLE, USING RETRO-FIT KIT MODEL 1RKHO.H.

		1455 KLEPPLE LANE SPARKS, NEVADA 89431 (775) 359-4712 FAX (775) 359-7424 E-MAIL: HAWS@HAWS.CO.COM WEBSITE: WWW.HAWS.CO.COM	
EGN NO. REVISED PER BY: FV 5574 EGN: 6136 DRAWN: DATE: 08/18/20 FV: CHK'D: KM APPROVED: DATE: 11/04/24	MODEL(S) 1920HO/1920HPSHO/1920WHO	SCALE: N/A DRAWING TYPE: INSTALLATION	SIZE: A1 SHEET: 6 OF 8 REVISION: 8




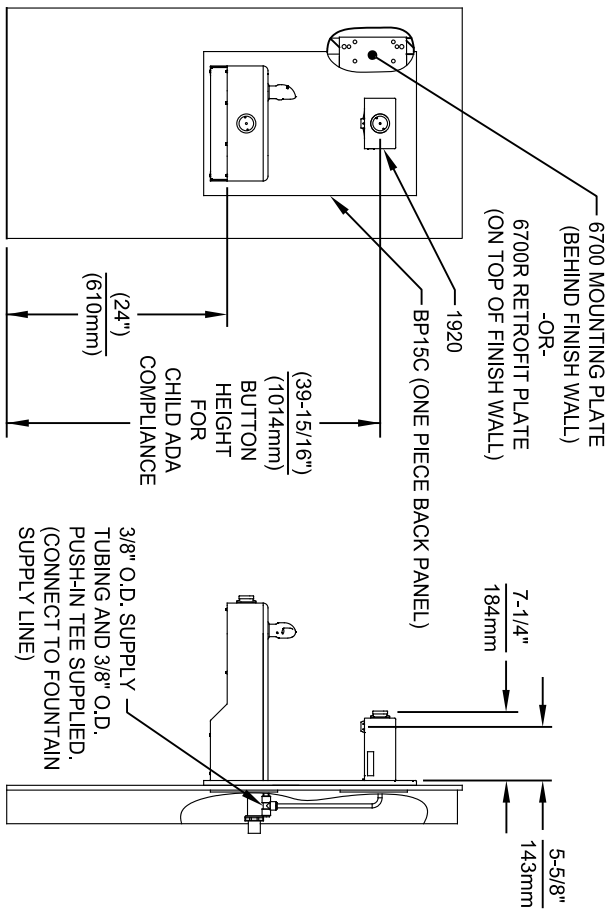
INSTALLATION ABOVE 6468

1. SEE SEPARATE INSTALLATION DRAWINGS FOR MOUNTING PLATES AND BACK PANELS (SHOWN FOR REFERENCE - NOT SUPPLIED).
2. WHEN INSTALLING THIS UNIT, LOCAL, STATE OR FEDERAL CODES SHOULD BE ADHERED TO FOR INSTALLATION LOCATIONS, WASTE & SUPPLY REQUIREMENTS OTHER THAN SHOWN.

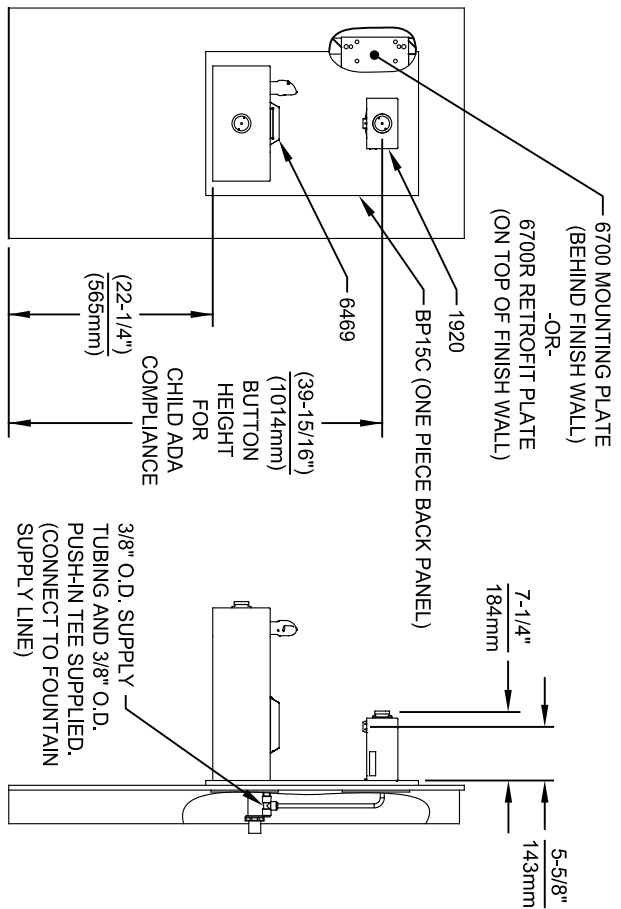


3/8" O.D. SUPPLY TUBING AND 3/8" O.D. PUSH-IN TEE SUPPLIED. (CONNECT TO FOUNTAIN SUPPLY LINE)

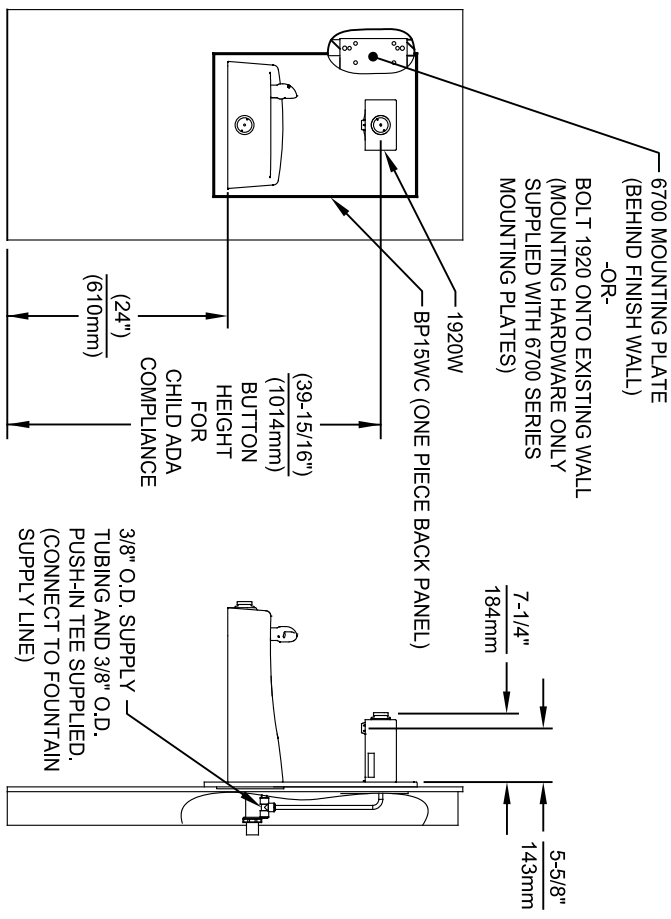
 <p>Haws Since 1906</p>		<p>1455 KLEPPLE LANE SPARKS, NEVADA 89431 (775) 359-4712 FAX (775) 359-7424 E-MAIL: HAWS@HAWSCO.COM WEBSITE: WWW.HAWSCO.COM</p>	
EGN NO. REVISED PER BY:	MODEL(S)	SCALE	INSTALLATION
5744 EGN 6136 FV	1920HO/1920HPSHO/1920WHO	N/A	
DRAWN: DATE: 10/04/21	CHECKD: KM	DRAWING TYPE:	SIZE: A1 SHEET: 7 OF 8
APPROVED: FV	DATE: 11/04/24		
PART NUMBER: 0510001063.D	REVISION: 8		



INSTALLATION ABOVE HAWS 1107L & H1107.8 SERIES



INSTALLATION ABOVE HAWS 1109, 1109.14 & H1109.8 SERIES
MUST USE PARALLEL APPROACH WITH THIS BOWL COMBINATION



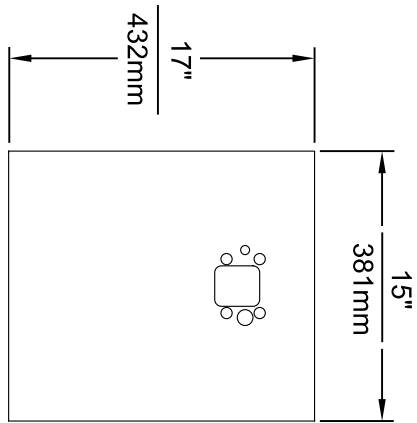
INSTALLATION ABOVE HAWS 1311

- NOTES:
1. HEIGHT DIMENSIONS SHOWN ARE FOR CHILD ADA APPLICATIONS:
- BOTTLE FILLER HEIGHT AT 40" MAX.
- DRINKING FOUNTAIN BUBBLER HEIGHT AT 30" MAX.
(SEE SHEETS 3, 4 & 5 FOR ADULT ADA HEIGHT DIMENSIONS)
 2. SEE SEPARATE INSTALLATION DRAWINGS FOR MOUNTING PLATES AND BACK PANELS (SHOWN FOR REFERENCE - NOT SUPPLIED).
 3. WHEN INSTALLING THIS UNIT, LOCAL, STATE OR FEDERAL CODES SHOULD BE ADHERED TO FOR INSTALLATION LOCATIONS, WASTE & SUPPLY REQUIREMENTS OTHER THAN SHOWN.

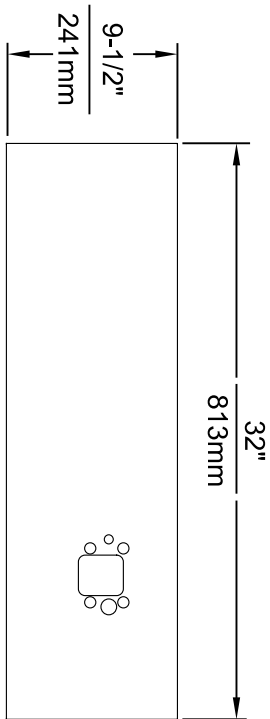
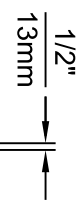
Haws
Since 1906

1455 KLEPPLE PLANE
SPARKS, NEVADA 89431
(775) 359-4712 FAX (775) 359-4224
E-MAIL: HAWS@HAWSCO.COM
WEBSITE: WWW.HAWSCO.COM

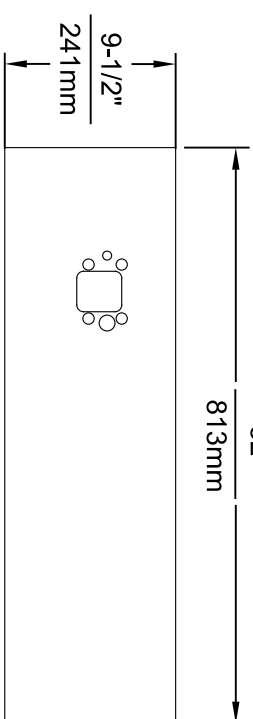
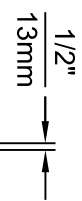
ECON. NO. REVISED PER BY:		MODEL(S)	
5744	ECON. 6136	1920HO/1920HPSHO/1920WHO	
DRAWN:	DATE:	CHK'D:	
FV	02/26/24	KM	
APPROVED:	DATE:	SCALE:	DRAWING TYPE:
FV	1/16/24	N/A	INSTALLATION
		SIZE:	SHEET 8 OF 8
			REVISION 8
			PART NUMBER 0510001063.D



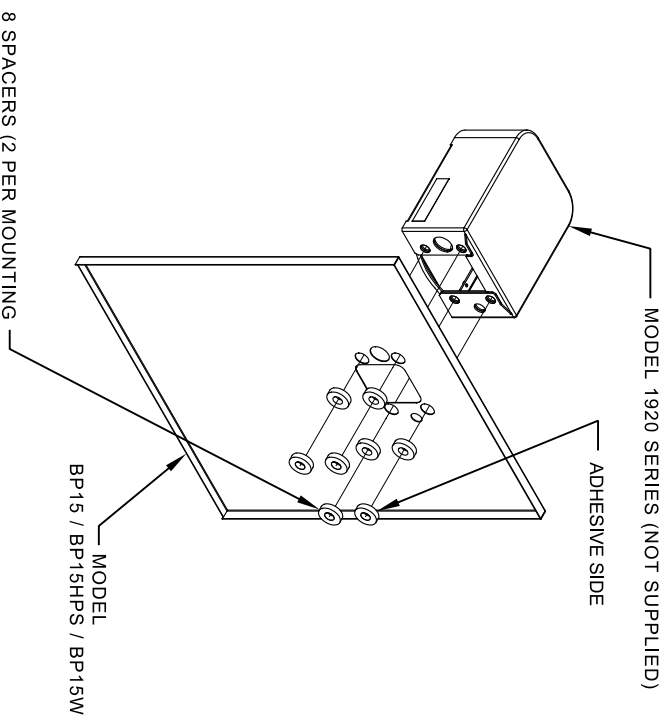
MODEL BP15 / BP15HPS / BP15W



MODEL BP32 / BP32HPS / BP32W



MODEL BP32R / BP32RW




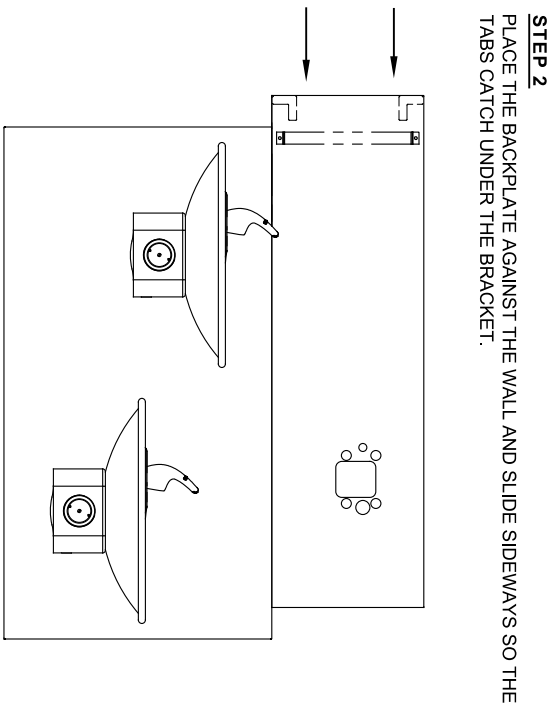
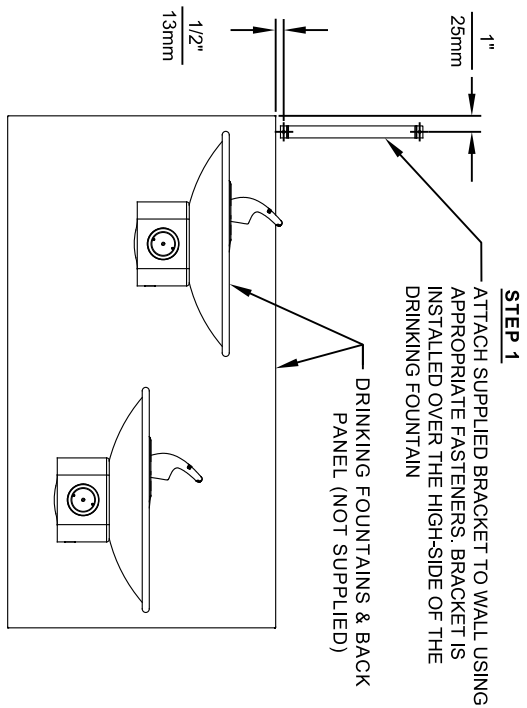
8 SPACERS (2 PER MOUNTING BOLT IF THE MOUNTING PLATE (MODEL 6700 - NOT SUPPLIED) IS INSTALLED BEHIND THE FINISHED WALL. USE 1 SPACER PER BOLT FOR RETROFITS WHERE THE MOUNTING PLATE (MODEL 6700R - NOT SUPPLIED) IS INSTALLED IN FRONT OF THE FINISHED WALL)

INSTALLATION OVER SINGLE FOUNTAIN

SHOWN FROM REAR
 (SEE SHEET 3 OF 3 FOR INSTALLATION OF SPACERS ON COMBINATION BOTTLE FILLER AND FOUNTAIN BACK PANELS FOR CHILD HEIGHT APPLICATIONS - MODELS BP15C & BP15WC)

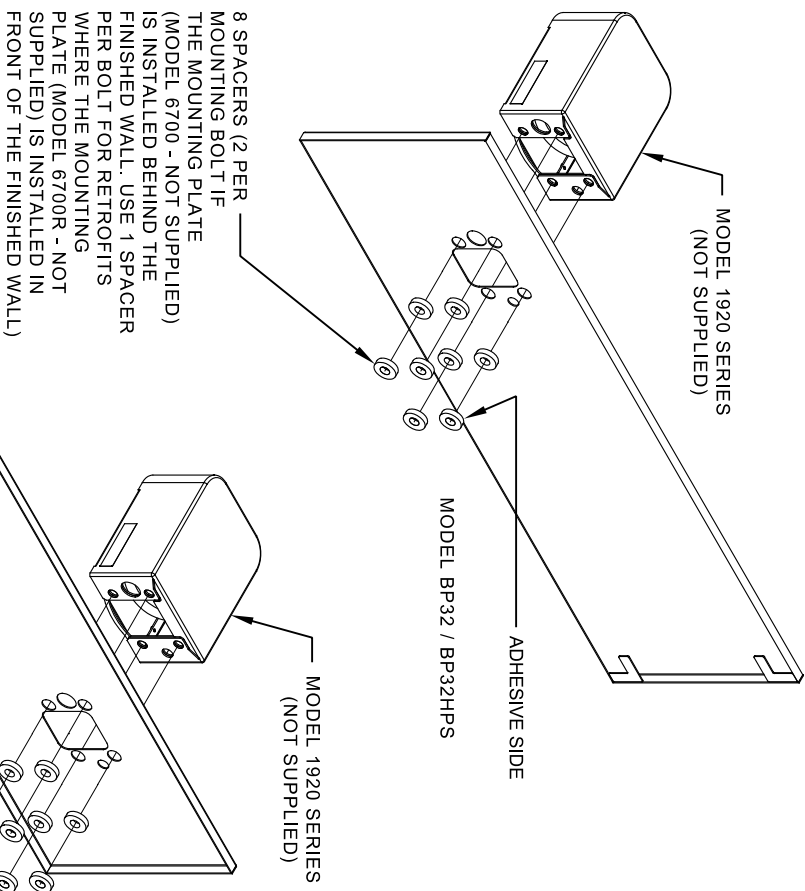
- NOTES:
1. WHEN INSTALLING THIS UNIT, LOCAL, STATE OR FEDERAL CODES SHOULD BE ADHERED TO.
 2. BOTTLE FILLER SHOWN FOR REFERENCE ONLY (NOT SUPPLIED).

 <p>Haws Since 1906</p>		MODEL(S) DRAWING, BACK PANEL, SPACER INSTALLATION FOR BP15 SERIES & BP32 SERIES, BOTTLE FILLER	PART NUMBER 0510000493
EGN NO. REVISED PER BY: 5081 FV	DATE: 06/27/16 CHK'D: JC APP'D: FV	SCALE: 1:1 DRAWING TYPE: INSTALLATION	REVISION: 5
SPARKS, NEVADA 89431 (775) 359-4712 FAX (775) 359-7424 E-MAIL: HAWS@HAWSCO.COM WEBSITE: WWW.HAWSCO.COM		1455 KLEPPLELANE	SIZE: A1 SHEET 1 OF 3



STEP 3
INSTALL THE BOTTLE FILLER (NOT SUPPLIED) PER THE INSTRUCTIONS SUPPLIED WITH THE UNIT.


- NOTES:
1. WHEN INSTALLING THIS UNIT, LOCAL, STATE OR FEDERAL CODES SHOULD BE ADHERED TO.
 2. BOTTLE FILLERS, DRINKING FOUNTAINS & DRINKING FOUNTAIN BACK PANELS SHOWN FOR REFERENCE ONLY (NOT SUPPLIED).



INSTALLATION OVER DOUBLE FOUNTAIN

SHOWN FROM REAR

ECON. NO. REVISED PER BY:		MODEL(S)		PART NUMBER	
5081	ECON. 3972	FV		BP32R	0510000493
DRAWN:	DATE:	CHK'D:	DATE:	DRAWING TYPE:	REVISION:
ML	02/02/17	JC		INSTALLATION	5
APPROVED:	DATE:	SCALE:	1:1	SIZE:	A1 SHEET 2 OF 3
FV	04/19/24				

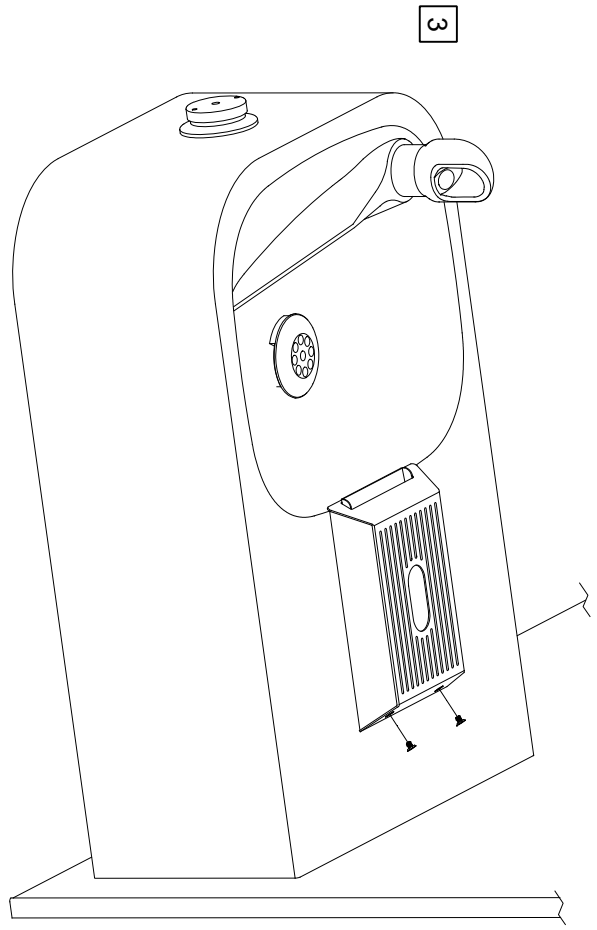
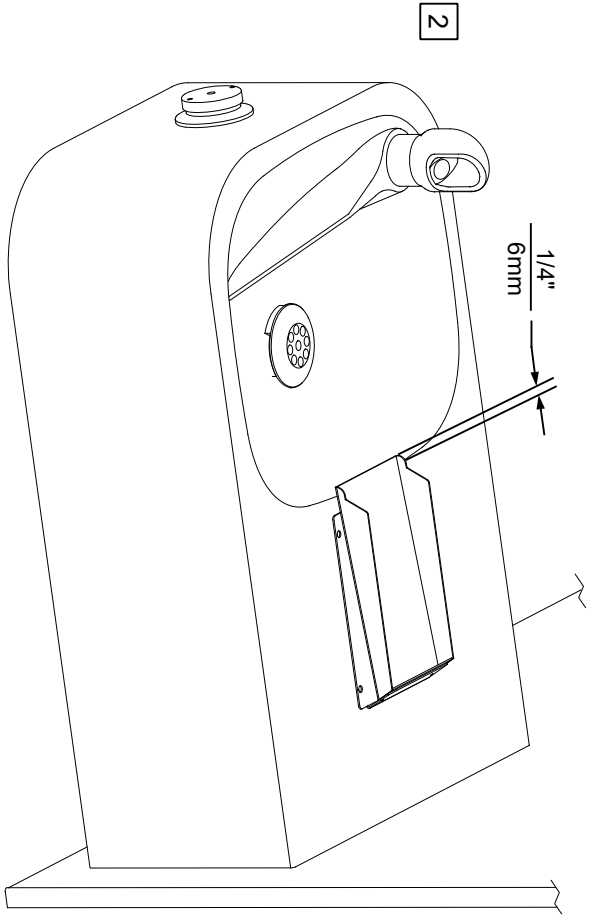
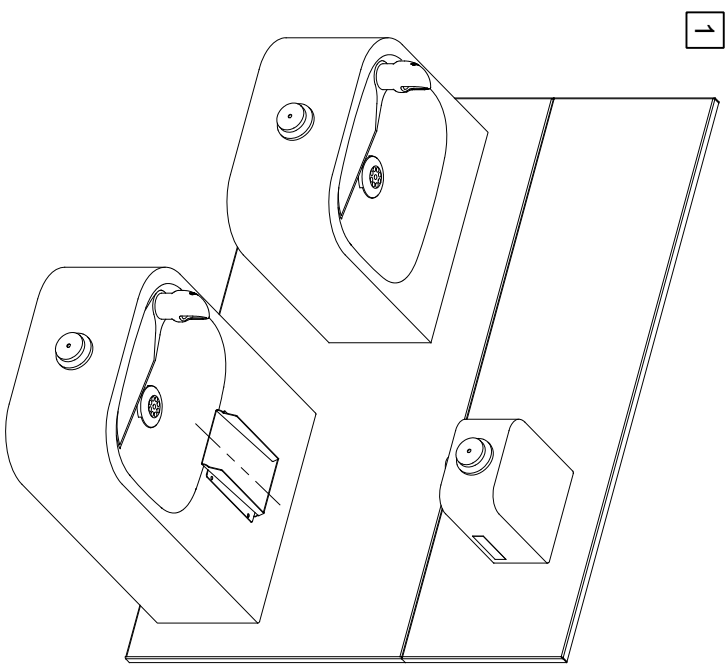



Haws
Since 1906

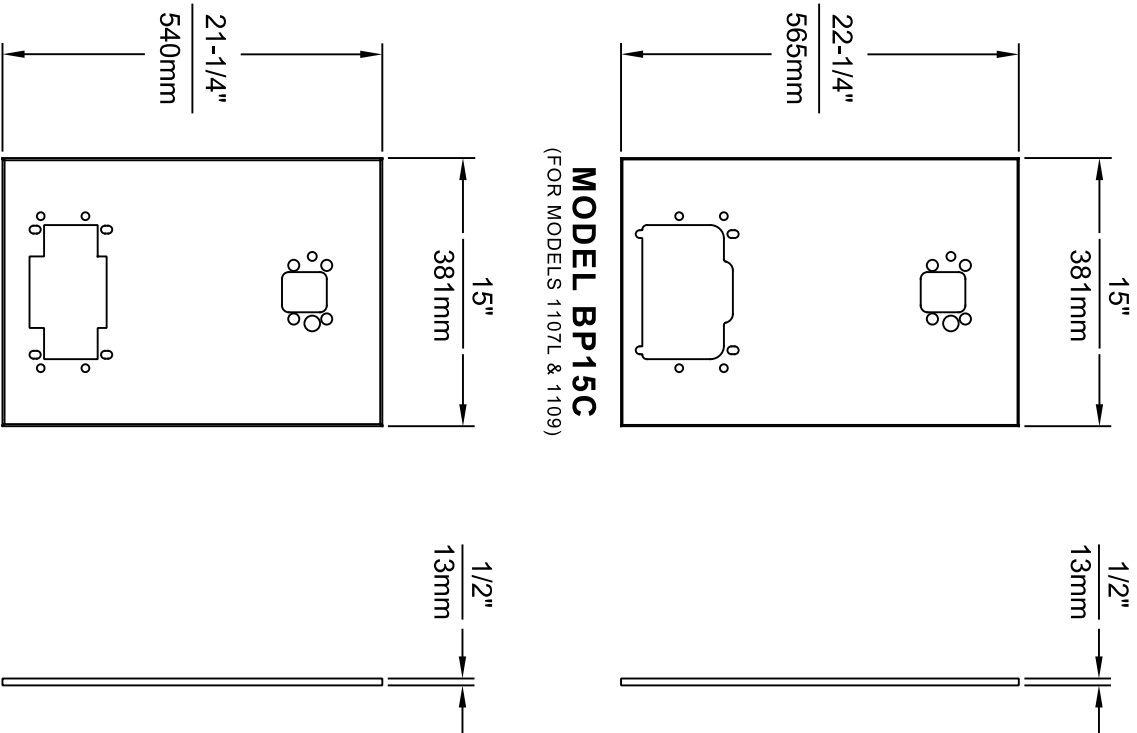
1455 KLEPPLELANE
SPARKS, NEVADA 89431
(775) 359-4712 FAX (775) 359-7424
E-MAIL: HAWS@HAWSCO.COM
WEBSITE: WWW.HAWSCO.COM

6469 STRAINER DRIP TRAY INSTALLATION

- 1 THE 6469 STRAINER DRIP TRAY ALLOWS THE INSTALLATION OF THE 1920 SERIES BOTTLE FILLER OVER HAWS 1109/1119 SERIES MODEL DRINKING FOUNTAINS. CENTER THE LOWER DRAIN PAN ALONG THE CENTERLINE OF THE FOUNTAIN.
- 2 EXTEND THE FRONT EDGE OF THE LOWER DRAIN PAN OVER THE EDGE OF THE FOUNTAIN BOWL BY APPROXIMATELY 1/4" (6mm). IT IS RECOMMENDED TO TEMPORARILY TAPE THE DRAIN PAN IN PLACE. INSTALL THE TOP COVER, AND ACTIVATE THE BOTTLE FILLER TO VERIFY THE WATER STREAM IS ALIGNED TO THE INLET HOLE. VERIFY THE LIP OF THE TOP COVER HANGS OVER THE EDGE OF THE FOUNTAIN BOWL.
- 3 MARK THE DRAIN PAN HOLE LOCATIONS ON THE FOUNTAIN. THE DRAIN PAN CAN NOW BE PERMANENTLY INSTALLED USING AN APPROPRIATE FASTENING METHOD (FASTENERS NOT SUPPLIED). FASTENING OPTIONS INCLUDE THRU BOLTS, RIVETS, TACK WELDS, AND DOUBLE-SIDED FOAM TAPE. INSTALL THE TOP COVER AND SECURE TO THE DRAIN PAN WITH THE SUPPLIED 4-40 FLAT HEAD SCREWS (QTY. 2).

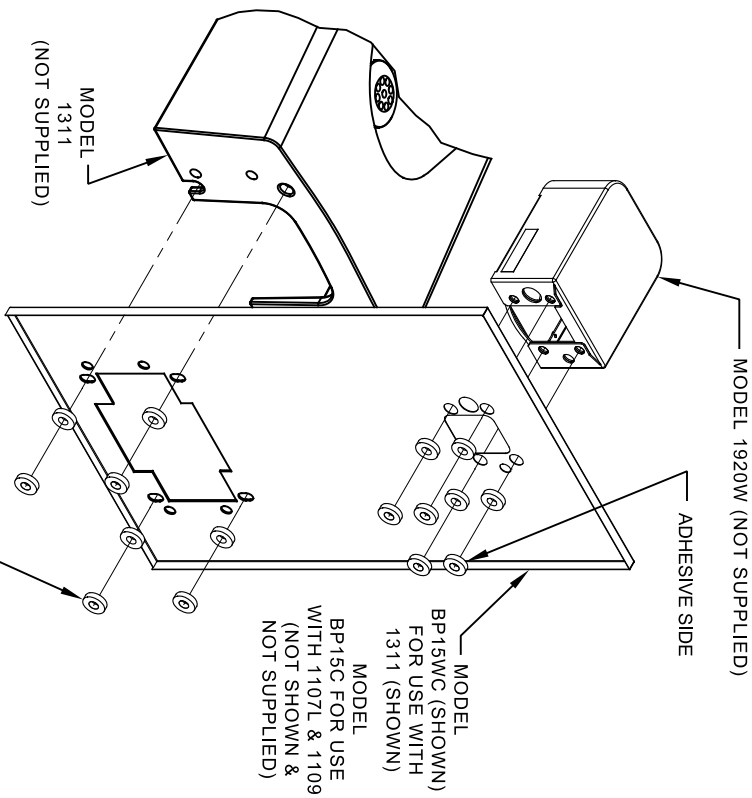


		Haws®		1455 KLEPPE LANE SPARKS, NEVADA, 89431 (775) 359-4712 FAX (775) 359-7424 E-MAIL: HAWS@HAWS.CO.COM WEBSITE: WWW.HAWS.CO.COM	
		MODEL(S) 6469		PART NUMBER 0510000657.D	
ECN NO. 5150	REVISED PER BY. FV	DATE 01/10/17	CHK'D. JS	SCALE 1:4	DRAWING TYPE INSTALLATION
DRAWN MJ	DATE 07/08/22	APPROVED FV	SIZE A	SHEET 1 OF 1	REVISION 2



MODEL BP15WC
(FOR MODEL 1311)

- NOTES:
1. WHEN INSTALLING THIS UNIT, LOCAL, STATE OR FEDERAL CODES SHOULD BE ADHERED TO.
 2. BOTTLE FILLER AND DRINKING FOUNTAIN SHOWN FOR REFERENCE ONLY (NOT SUPPLIED).




16 SPACERS (2 PER MOUNTING BOLT IF BOTH MOUNTING PLATES (MODEL 6700 - NOT SUPPLIED) ARE INSTALLED BEHIND THE FINISHED WALL. USE 1 SPACER PER BOLT FOR RETROFITS WHERE BOTH MOUNTING PLATES (MODEL 6700R - NOT SUPPLIED) ARE INSTALLED IN FRONT OF THE FINISHED WALL)

ONE PIECE INSTALLATION ON SINGLE FOUNTAIN


SHOWN FROM REAR

(MODEL BP15C & BP15WC ARE COMBINATION BOTTLE FILLER AND FOUNTAIN BACK PANELS USED FOR CHILD HEIGHT APPLICATIONS ONLY ON MODELS 1107L, 1109 & 1311 - BOTTLE FILLER & DRINKING FOUNTAIN NOT SUPPLIED)

 <p>Haws Since 1906</p>		<p>1455 KLEPPLELANE SPARKS, NEVADA 89431 (775) 359-4712 FAX (775) 359-4424 E-MAIL: HAWS@HAWSCO.COM WEBSITE: WWW.HAWSCO.COM</p>	
<p>EGN NO. 5972 DRAWN: FV DATE: 12/19/23</p>	<p>REVISED PER BY: FV ECON: 5972 DATE: 12/19/23</p>	<p>MODEL(S) DRAWING, BACK PANEL, SPACER INSTALLATION FOR BP15 SERIES & BP32 SERIES, BOTTLE FILLER</p>	<p>PART NUMBER 0510000493 REVISION 5</p>
<p>APPROVED: FV DATE: 04/19/24</p>	<p>SCALE: 1:1 DRAWING TYPE: INSTALLATION</p>	<p>SIZE: A1 SHEET 3 OF 3</p>	

6700 INDEX

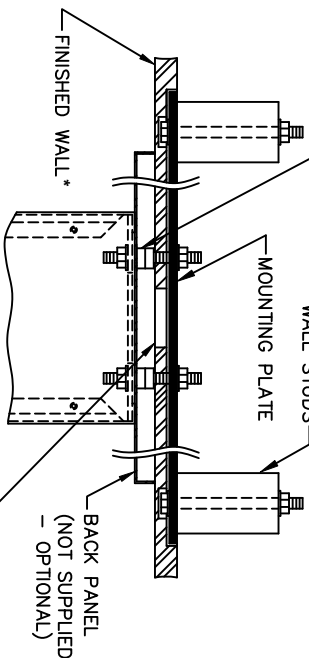
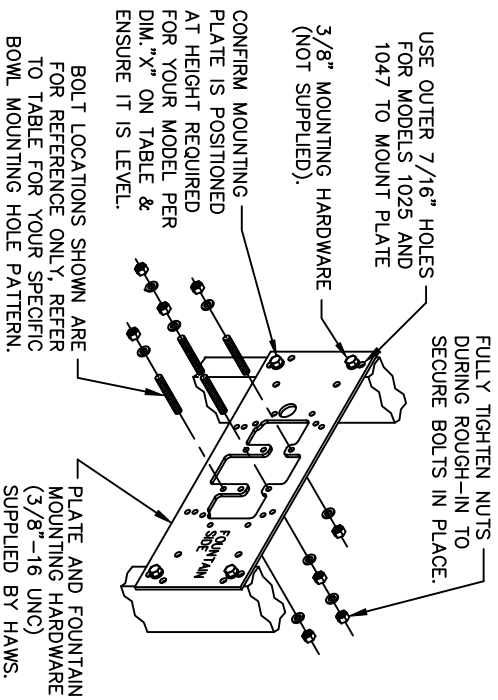
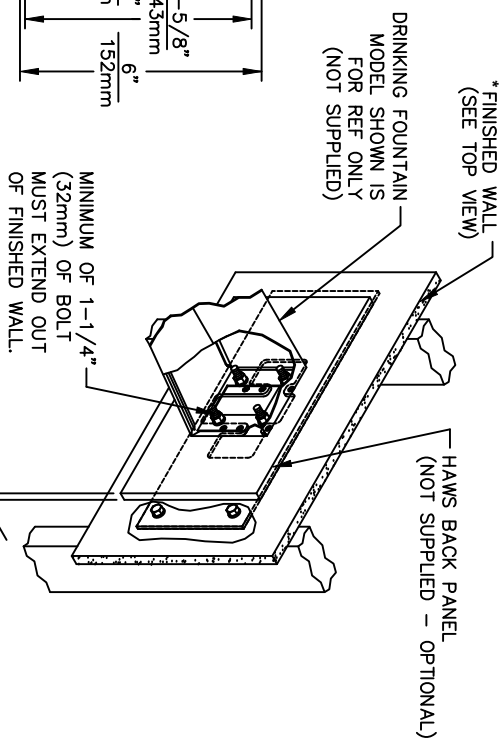
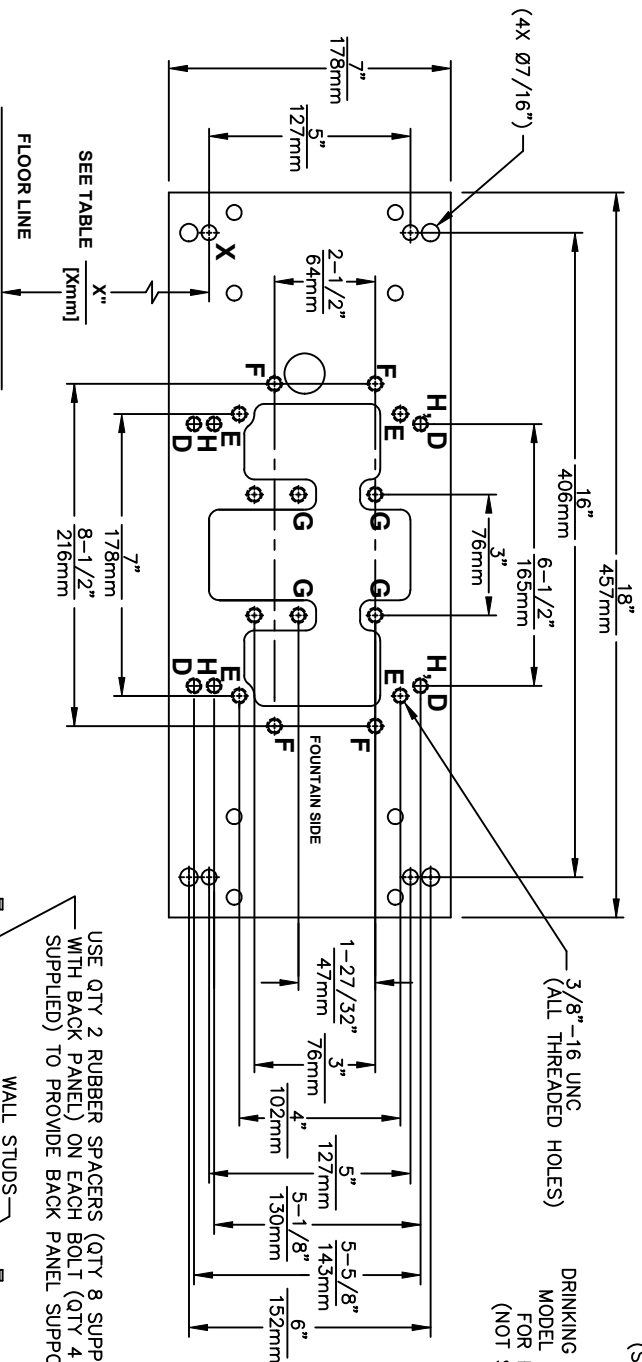
INSTALLATION WITH:	TYPICAL USES	SEE SHEET...
GENERAL INSTALLATION		IMPORTANT INFORMATION FOR ALL INSTALLATIONS
1001 BOWLS	HAWS SERIES 1001X, H1001.8X	3 OF 6
1107 BOWLS	HAWS SERIES 1107L, H1107.8	3 OF 6
1109 BOWLS	HAWS SERIES 1109X, H1109.8X	3 OF 6
1047 BOWLS	HAWS SERIES 1047	4 OF 6
1011 BOWLS	HAWS SERIES 1011X, H1011.8X	4 OF 6
1119 BOWLS	HAWS SERIES 1119X, H1119.8X	4 OF 6
1117 BOWLS	HAWS SERIES 1117X, H1117.8X	5 OF 6
1311 BOWLS	HAWS SERIES 1311	5 OF 6
1501 BOWLS	HAWS SERIES 1501	5 OF 6
CHILD HEIGHT	HAWS 1107PCH, 1109PCH, 1311PCH	6 OF 6



Haws
Since 1906

1455 KLEPPE LANE
SPARKS, NEVADA 89431
(775) 359-4712 FAX (775) 359-7424
E-MAIL: HAWS@HAWS.CO.COM
WEBSITE: WWW.HAWS.CO.COM

ECON NO. REVISED PER BY:		MODEL(S)		PART NUMBER	
DRAWN: JG	DATE: 6/131	CHKD: JG	67/00	0002080016	REVISION
APPROVED: RH	DATE: 11/26/24	SCALE: N/A	DRAWING TYPE:	INSTALLATION	SHEET 1 OF 6



TOP VIEW

6700 MOUNTING PLATE

FOR USE WITH DRINKING FOUNTAINS AND WASTE DRIP TRAYS AT 27" ADULT HEIGHT (SEE SHEETS 2 - 5 FOR USE WITH BOTTLE FILLER 1920/1920HO SERIES AND CHILD HEIGHT APPLICATIONS)

*FINISH WALL OVER MOUNTING PLATE AND BEHIND BACK PANEL. MAKE SURE THAT FINISHED WALL EXTENDS WITHIN THE BRACKET/BOWL MOUNTING HOLES (TO PROVIDE SURFACE AREA FOR RUBBER SPACERS TO CONTACT).

MODEL	USE BOWL MOUNTING HOLE PATTERN	USE "X" DIM. BELOW TO POSITION MOUNTING PLATE HOLE "X"
1001	"G"	25-3/8" [645mm]
1025	"D"	28-1/8" [714mm]
1047	"E"	24-3/8" [619mm]
1105	"H"	34-5/16" [872mm]
1107L	"F"	26-3/16" [665mm]
1109	"H"	27-5/16" [694mm]
1109.14	"H"	27-5/16" [694mm]
1109FR	"H"	27-5/16" [694mm]
1311	"E"	26-3/4" [679mm]

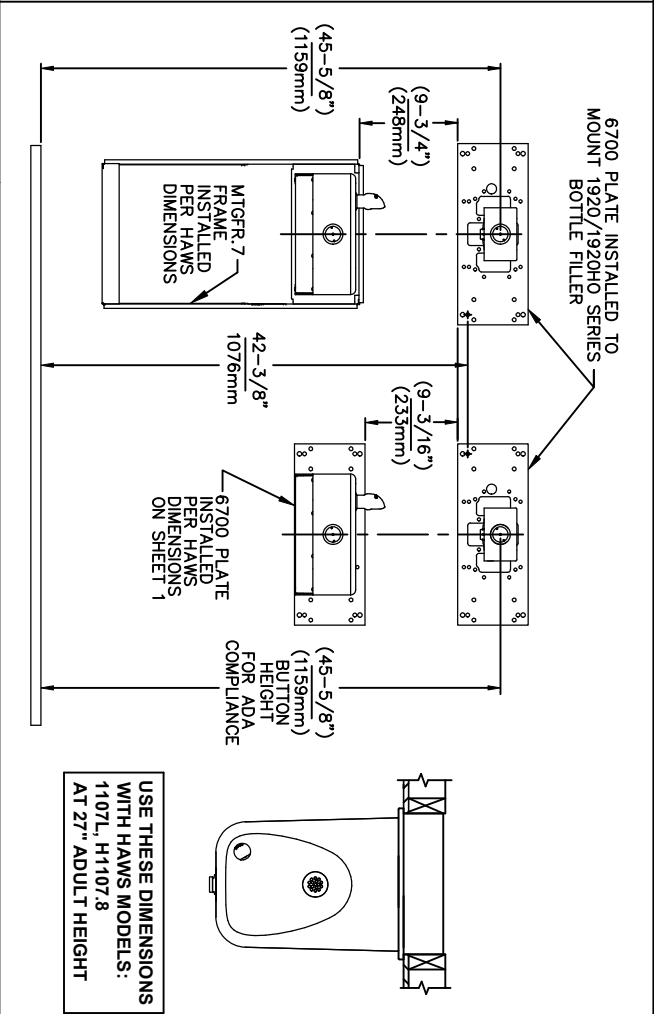
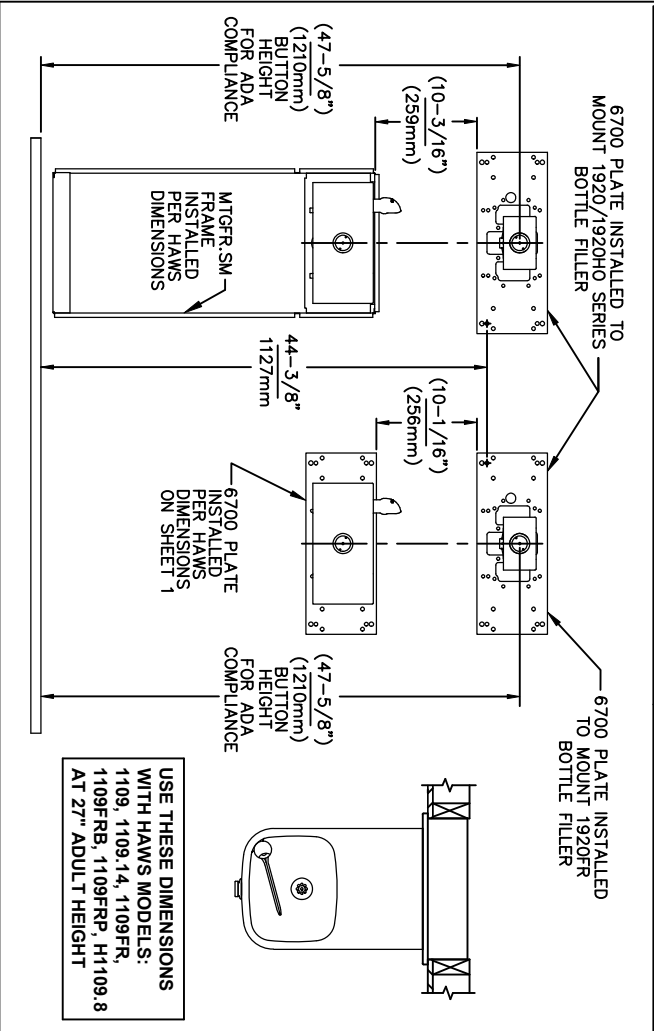
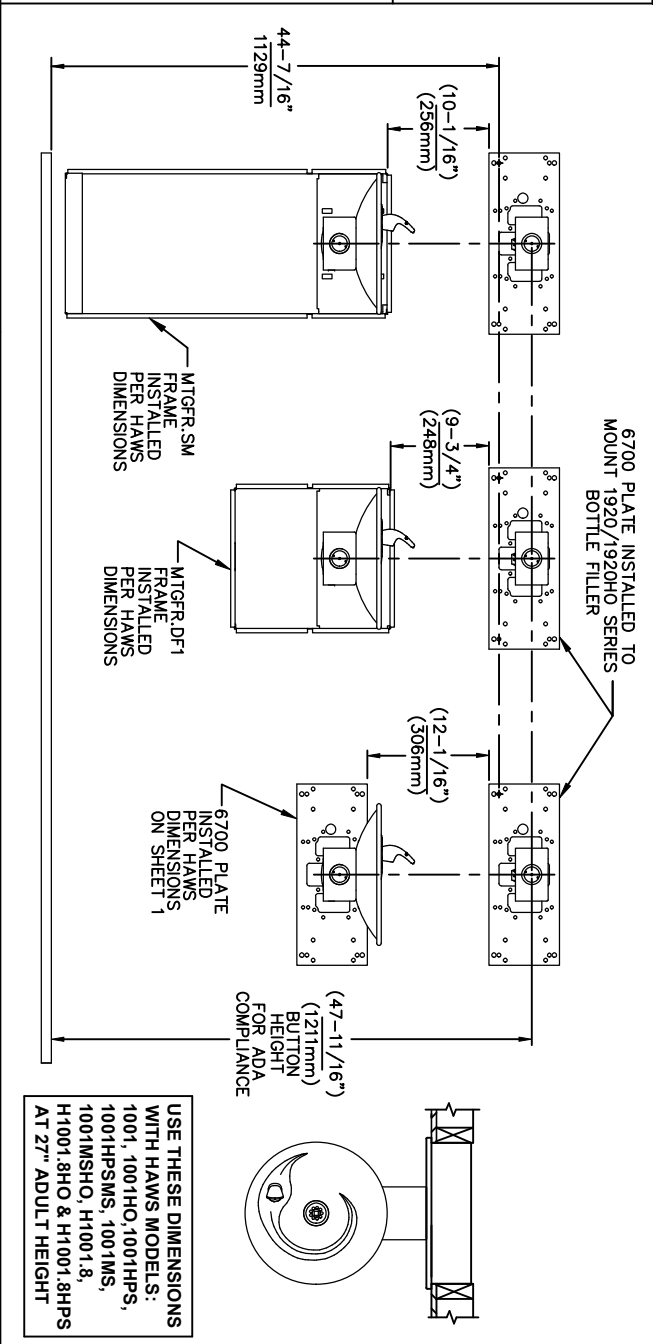
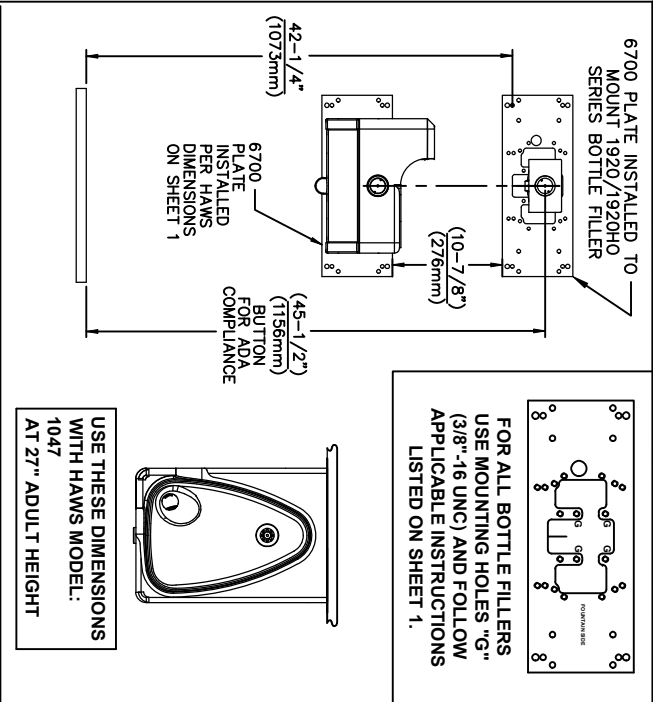
MODEL	WASTE DRIP TRAY (ONLY) AT 27" ADULT HEIGHT
6468	"G"
1922	"G"

CAUTION

REGARDING CONCRETE/MASONRY WALL MOUNTING: DO NOT SECURE MOUNTING PLATE TO SAME SIDE OF WALL AS FOUNTAIN. AVOID COMPROMISING INTEGRITY OF WALL WHEN ANCHORING FOUNTAIN. IT IS RECOMMENDED THAT INSTALLER CALL TECHNICAL SUPPORT IF THERE ARE ANY QUESTIONS AS TO HOW TO OBTAIN A PROPER ANCHOR IN CONCRETE/MASONRY WALLS. 1-800-766-5612



ECON NO. REVISED PER BY:	MODEL(S)	1455 KLEPPE LANE
DRAWN: C.L.	DATE: 09-03-03	SPARKS, NEVADA, 89431
CHKD: J.G.	DATE: 11/26/24	(775) 359-4712 FAX (775) 359-7424
APPROVED: RH	SCALE: N/A	E-MAIL: HAWS@HAWS.CO.COM
	DRAWING TYPE: INSTALLATION	WEBSITE: WWW.HAWS.CO.COM
	SIZE: A	PART NUMBER
	SHEET: 2 OF 6	0002080016
		REVISION: 25

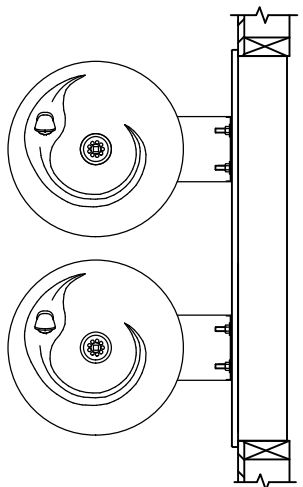
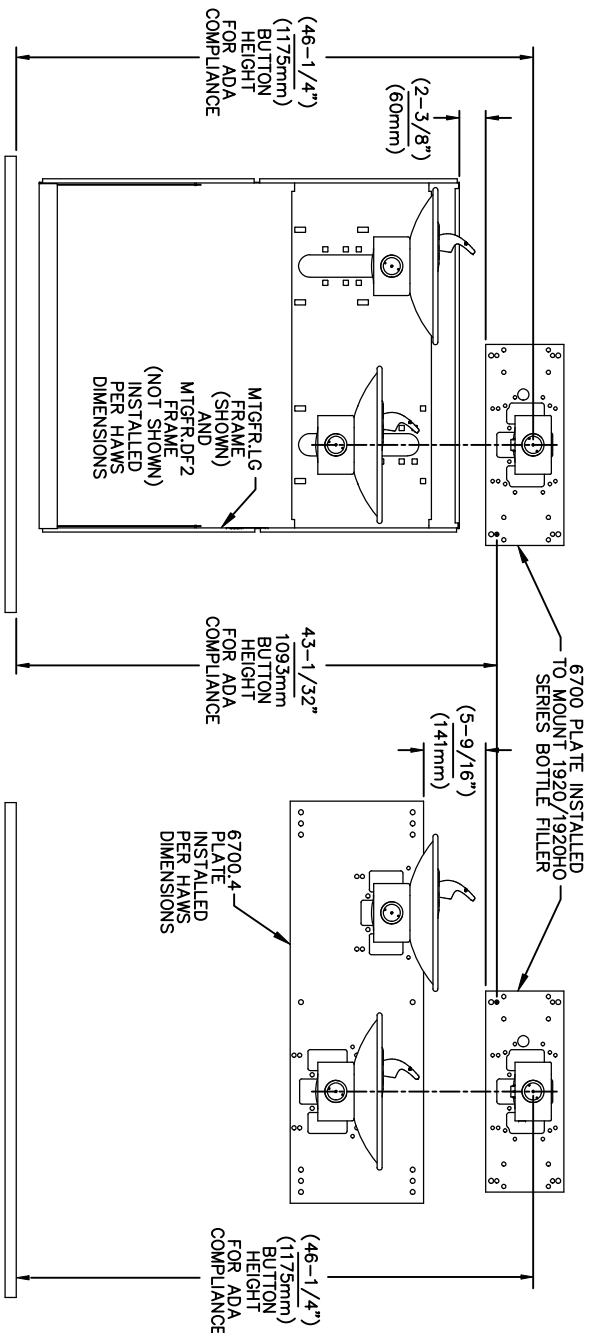


NOTES:
 1. WHEN INSTALLING THIS UNIT, LOCAL, STATE OR FEDERAL CODES SHOULD BE ADHERED TO.
 2. BACK PANELS (OPTIONAL) NOT SHOWN FOR CLARITY.

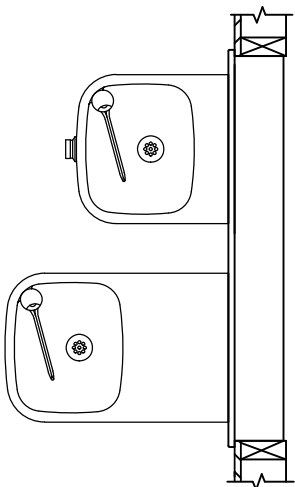
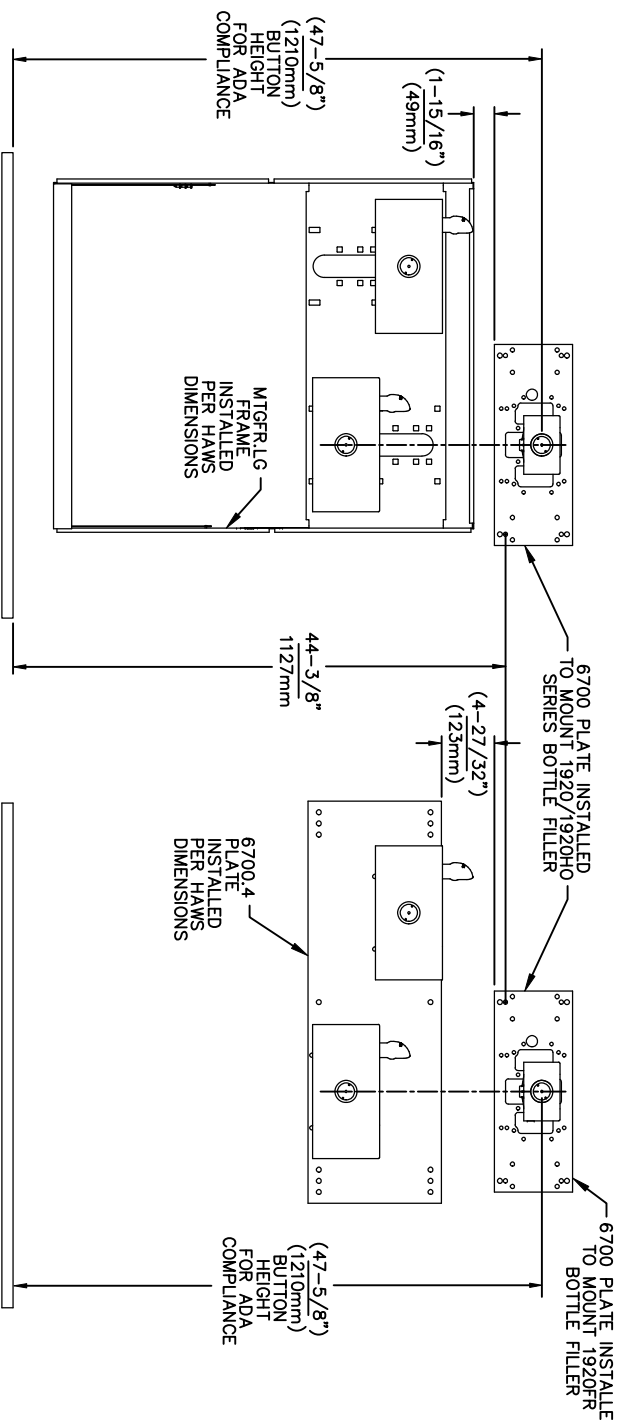
6700 MOUNTING PLATE
 FOR USE WITH BOTTLE FILLER
 (SEE SHEET 1 FOR USE WITH
 DRINKING FOUNTAINS)

1455 KLEPPE LANE
 SPARKS, NEVADA, 89431
 (775) 359-4712 FAX (775) 359-7424
 E-MAIL: HAWS@HAWS.CO.COM
 WEBSITE: WWW.HAWS.CO.COM

ECN NO.	REVISED PER BY:	MODEL(S)
0002080016	EV	6700
DATE:	CHKD:	
02/09/17	JG	
APPROVED:	DATE:	SCALE:
RH	11/26/24	N/A
DRAWN:	DATE:	DRAWING TYPE:
MJ	02/09/17	INSTALLATION
PART NUMBER	SIZE:	SHEET:
0002080016	A	3 OF 6
REVISION:		
25		



USE THESE MOUNTING DIMENSIONS IF INSTALLING OVER HAWS FOUNTAIN
 MODEL: 1011, 1011HO, 1011HO2, 1011HPS, 1011HPSHO, 1011HPSHO2, 1011HPSMS, 1011HMS, 1011MSHO, 1011MSHO2, H1011.8, H1011.8HO, H1011.8HO2 & H1011.8HPSM AT 27" ADULT HEIGHT
 INSTALL THE 6700 ABOVE THE FOUNTAIN MOUNTING PLATE OR FRAME AT THE DIMENSION SHOWN FOR CORRECT BACKPANEL SPACING
BACK PANELS FOR BOTTLE FILLERS (NOT SUPPLIED - OPTIONAL) ARE NOT SHOWN FOR CLARITY.



USE THESE MOUNTING DIMENSIONS IF INSTALLING OVER HAWS FOUNTAIN
 MODEL: 1119, 1119.14, 1119.14HO, 1119.14HO2, 1119FR, 1119FRB, 1119FRP, 1119HO, 1119HO2 & H1119.8 AT 27" ADULT HEIGHT
 INSTALL THE 6700 ABOVE THE FOUNTAIN MOUNTING PLATE OR FRAME AT THE DIMENSION SHOWN FOR CORRECT BACKPANEL SPACING
BACK PANELS FOR BOTTLE FILLERS (NOT SUPPLIED - OPTIONAL) ARE NOT SHOWN FOR CLARITY.

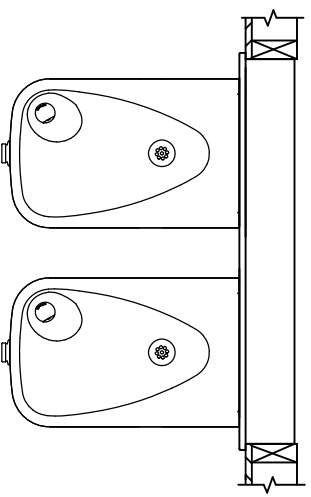
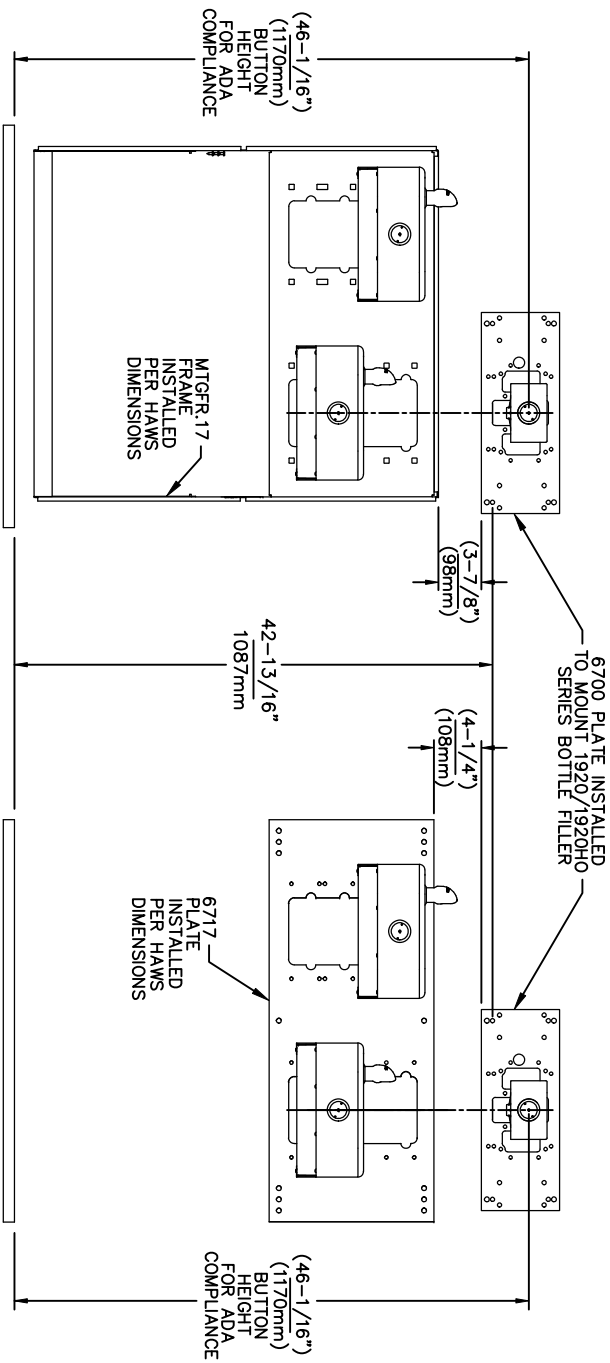
- NOTES:
1. WHEN INSTALLING THIS UNIT, LOCAL, STATE OR FEDERAL CODES SHOULD BE ADHERED TO.
 2. BACK PANELS (OPTIONAL) NOT SHOWN FOR CLARITY.

6700 MOUNTING PLATE
 FOR USE WITH BOTTLE FILLER
 (SEE SHEET 1 FOR USE WITH
 DRINKING FOUNTAINS)

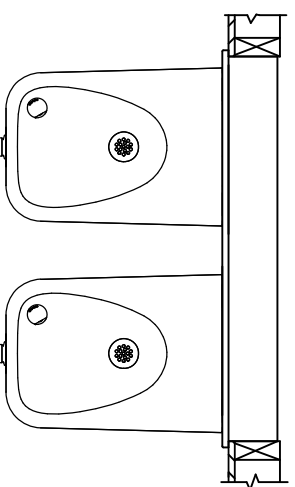
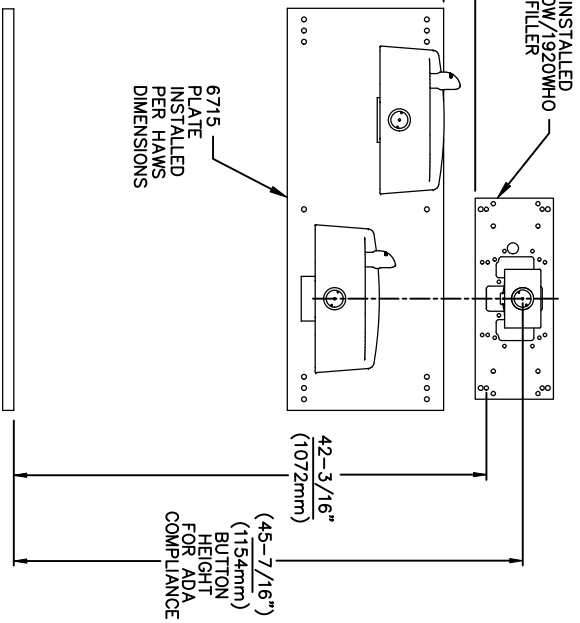
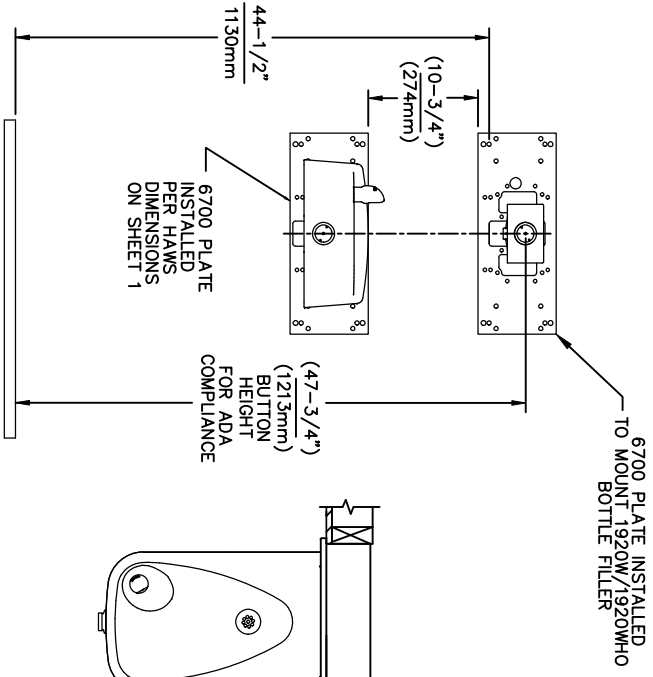
Since 1906

1458 KLEPPE LANE
 SPARKS, NEVADA 89431
 (775) 359-4712 FAX (775) 359-7424
 E-MAIL: HAWS@HAWSCO.COM
 WEBSITE: WWW.HAWSCO.COM

ECN NO. REVISED PER BY:	MODEL(S)	PART NUMBER	INSTALLATION
5550		6700	
DATE: 05/14/20	DATE: 05/14/20	REVISION: 0002080016	SIZE: A
CHKD: JS	CHKD: JS	REVISION: 25	SHEET 4 OF 6
APPROVED: RH	SCALE: 1:13	DRAWING TYPE:	



USE THESE MOUNTING DIMENSIONS IF INSTALLING OVER HAWS FOUNTAIN MODEL: 1117L, 1117LHO, 1117LHO2, H1117.8, H1117.8HO, H1117.8HO2, H1117LN, 1117LNHO, 1117LNHO2 AND H1117LN.8 USE A 6700.4 MOUNTING PLATE & NOT SHOWN - SEE MANUAL(S) AT 27" ADULT HEIGHT
 INSTALL THE 6700 ABOVE THE FOUNTAIN MOUNTING PLATE OR FRAME AT THE DIMENSION SHOWN FOR CORRECT BACKPANEL SPACING
 BACK PANELS FOR BOTTLE FILLERS (NOT SUPPLIED - OPTIONAL) ARE NOT SHOWN FOR CLARITY.



USE THESE MOUNTING DIMENSIONS IF INSTALLING OVER HAWS FOUNTAIN MODEL: 1311, 1501
 INSTALL THE 6700 ABOVE THE FOUNTAIN MOUNTING PLATE AT THE DIMENSION SHOWN FOR CORRECT BACKPANEL SPACING (IF APPLICABLE).
 BACK PANEL FOR BOTTLE FILLER (NOT SUPPLIED - OPTIONAL) IS NOT SHOWN FOR CLARITY.

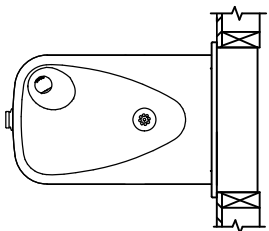
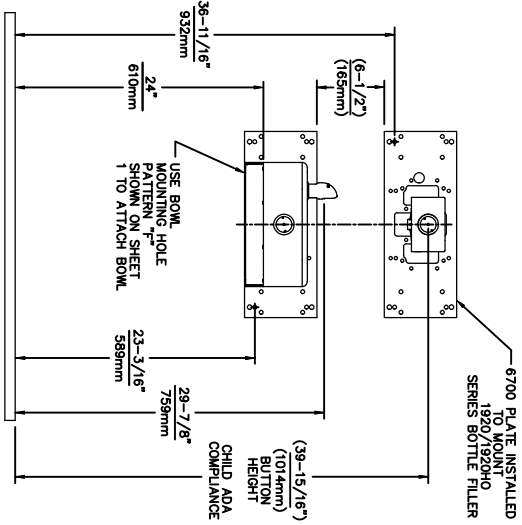
- NOTES:
 1. WHEN INSTALLING THIS UNIT, LOCAL, STATE OR FEDERAL CODES SHOULD BE ADHERED TO.
 2. BACK PANELS (OPTIONAL) NOT SHOWN FOR CLARITY.

6700 MOUNTING PLATE
 FOR USE WITH BOTTLE FILLER
 (SEE SHEET 1 FOR USE WITH
 DRINKING FOUNTAINS)

Haws
 Since 1906

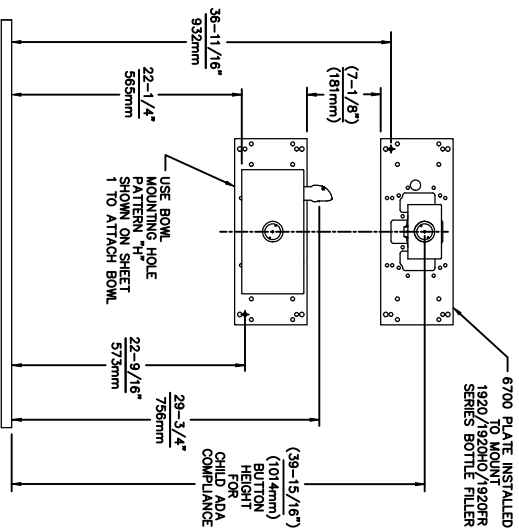
1458 KLEPPE LANE
 SPARKS, NEVADA, 89431
 (775) 359-4712 FAX (775) 359-7424
 E-MAIL: HAWS@HAWSCO.COM
 WEBSITE: WWW.HAWSCO.COM

ECN NO. REVISED PER BY:	MODEL(S)
5550	6700
DATE: 6/13/11	
CHKD: JS	
DATE: 05/14/20	
APPROVED: RH	SCALE: 1:13
DATE: 11/28/24	DRAWING TYPE: INSTALLATION
	SIZE: A
	SHEET: 5 OF 6
	REVISION: 25
	PART NUMBER: 0002080016



USE THESE DIMENSIONS WITH HAWS
MODEL:
1107L
AT 24" CHILD HEIGHT *

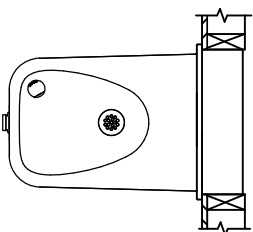
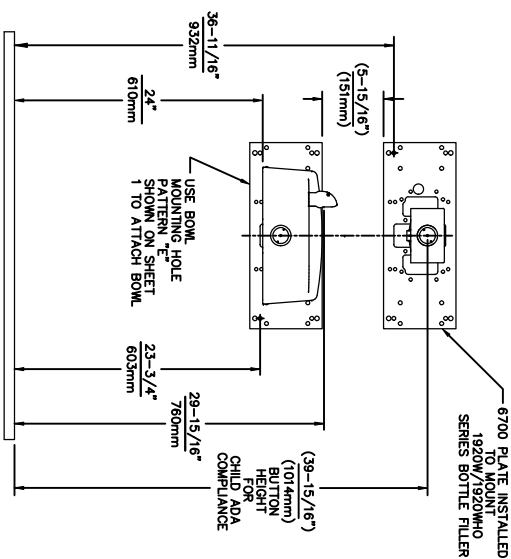
6700 MOUNTING PLATE
FOR USE WITH BOTTLE FILLER AT
40" MAX. AND
DRINKING FOUNTAIN
AT 24" AND BUBBLER HEIGHT AT 30"
MAX. FOR CHILD ADA HEIGHT
(SEE SHEETS 1 & 2 FOR USE WITH
DRINKING FOUNTAIN AT 27" ADULT
HEIGHT DIMENSIONS)



6700 MOUNTING PLATE
FOR USE WITH BOTTLE FILLER AT
40" MAX. AND
DRINKING FOUNTAIN
BUBBLER HEIGHT AT 30" MAX.
FOR CHILD ADA HEIGHT
MUST USE PARALLEL APPROACH

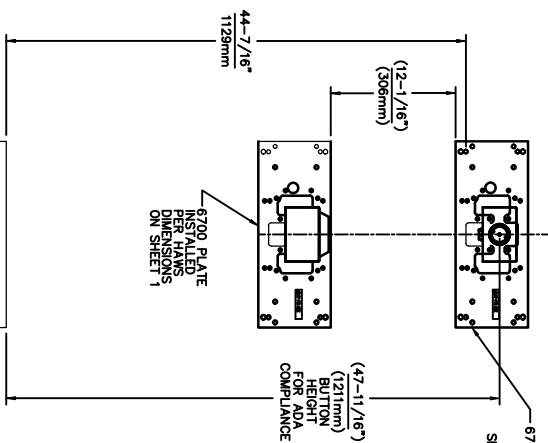
USE THESE DIMENSIONS WITH HAWS
MODELS:
1109, 1109.14, 1109FR, 1109FRB, 1109FRP
AT 22-1/4" HEIGHT TO ACHIEVE 30" MAX.
CHILD ADA BUBBLER HEIGHT * NOTE:
MUST USE PARALLEL APPROACH WITH
THIS BOWL COMBINATION.

- NOTES:
- WHEN INSTALLING THIS UNIT, LOCAL, STATE OR FEDERAL CODES SHOULD BE ADHERED TO.
 - ONE PIECE BACK PANELS BP15C (FOR USE WITH MODELS 1107L, 1109 SERIES & BOTTLE FILLER) & BP15WC (FOR USE WITH MODEL 1311 & BOTTLE FILLER) ARE USED FOR CHILD HEIGHT APPLICATIONS AND ARE OPTIONAL (NOT SHOWN FOR CLARITY).



USE THESE DIMENSIONS WITH HAWS
MODEL:
1107L
AT 24" CHILD HEIGHT *


6700 MOUNTING PLATE
FOR USE WITH BOTTLE FILLER AT
40" MAX. AND
DRINKING FOUNTAIN
AT 24" AND BUBBLER HEIGHT AT 30"
MAX. FOR CHILD ADA HEIGHT
(SEE SHEETS 1 & 4 FOR USE WITH
DRINKING FOUNTAIN AT 27" ADULT
HEIGHT DIMENSIONS)



USE THESE MOUNTING DIMENSIONS IF
INSTALLING OVER HAWS WASTE DRIP
TRAY. MODEL: 9468 (SHOWN), 1922
(MODEL 1922 INCLUDES 1920 BOTTLE
FILLER, 1922 BOTTLE FILLER, 1922
BP15, 1922 BACK PANELS (NOT SHOWN),
AT 27" ADULT HEIGHT.

INSTALL THE 6700 ABOVE THE
DRIP TRAY MOUNTING PLATE AT
THE DIMENSION SHOWN FOR CORRECT
BACK PANEL SPACING (IF APPLICABLE).
(NOT SUPPLIED - OPTIONAL) IS NOT
SHOWN FOR CLARITY.

6700 MOUNTING PLATE
FOR USE WITH BOTTLE FILLER
(SEE SHEET 1 FOR USE WITH
DRINKING FOUNTAINS
AND WASTE DRIP TRAY)



Haws
Since 1906

1455 KLEPPE LANE
SPARKS, NEVADA 89431
(775) 359-4712 FAX (775) 359-7424
E-MAIL: HAWS@HAWS.CO.COM
WEBSITE: WWW.HAWS.CO.COM

ECN NO. REVISED PER BY:	MODEL(S)
5893 1 EON. 6131 FV	6700
DATE: 07/26/23 JS	
CHK'D:	
DATE:	
APPROVED: RH	SCALE: 1:13 DRAWING TYPE: INSTALLATION SHEET 6 OF 6

PART NUMBER: 0002080016
REVISION: 25