

## FEATURES & BENEFITS

### CONSTRUCTION

Barrier-free design with an 18-gauge Type 304 satin finished stainless steel swirl bowl assembly mounted on a 14-gauge Type 304 stainless steel wall bracket. Unit includes an in-wall mounting frame, and front panel access for P-trap and stop.

### VANDAL RESISTANT

The bubbler head, sensor, round bowl, drain strainer and bottom plate are locked in place, discouraging unwanted vandal tampering, and 30-second obstruction time-out to reduce tampering of sensor.

### BOTTLE FILLER

14-gauge Type 304 stainless steel bottle filler housing with touchless operation and 1 gpm (3.78L) laminar flow with 30-second obstruction time-out.

### BUBBLER HEAD

Polished chrome-plated brass bubbler head with integral laminar flow prevents splashing while providing a superior flow pattern. The integral 11/16" dia. basin shank and stainless anti-rotation roll pin for vandal resistance strength. Shielded, angled stream opening provides a steady source of drinking water at .45 gpm.

### FOUNTAIN VALVES

Bottle filler incorporates a touchless sensor operated stainless steel solenoid valve controlled by a transformer, and a push-button activated valve which offers the only all stainless-steel valve body that is machined out of solid bar stock and is fully serviceable through the front of the push button assembly offering access to the water control cartridge and integral water supply strainer on the fountain.

### MOUNTING

Galvanized frame and 10 gauge surface plate provide the maximum mounting strength for the single bubbler drinking fountains and 3/16" (.47 cm) thick steel mounting plate for bottle filler.

## OPTIONS

- Water Filter: Model 6480 filter kit with 3000 gallon carbon block filter, filter head, and mounting bracket.
- Mounting Plate: Model 6700R, on-wall mounting plate for model 1920HO.
- Remote Drinking Fountain Water Chiller: Model HCR8, 8 gph (30.3 L) remote water chiller provides instantaneous cooling to meet a continuous demand for chilled water.

For more information, visit [www.hawsc.com](http://www.hawsc.com) or call (888) 640-4297.



## SPECIFICATIONS

### 1001MS / MTGFR.DF1 / 1920HO / 6700 / BP15

Order these items to make up the Model 1001MS-1920HO fountain with stainless steel back panel, bottle filler with stainless steel back panel, and fountain mounting frame shown above.

### FOR INDOOR USE ONLY

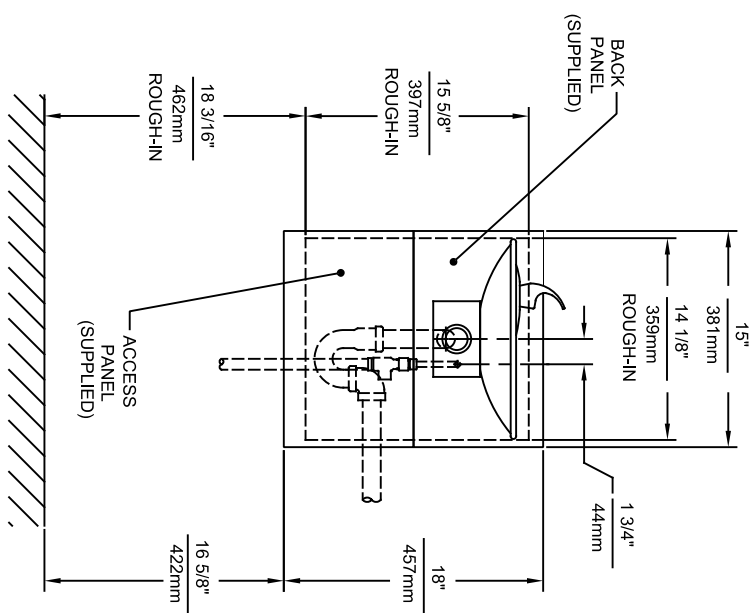
## APPLICATIONS

Model 1001MS-1920HO ADA wall-mounted vandal-resistant drinking fountain and motion activated bottle filler shall include an 18-gauge Type 304 Stainless Steel satin finish basin with integral swirl design, 14 gauge Type 304 Stainless Steel wall bracket and bottle filler bracket, 3/16" (.47 cm) thick steel mounting plate for bottle filler, in-wall mounting frame with lower access panel allowing for front access of P-trap and stop, 100% lead-free waterways, touchless sensor operated solenoid valve with 30-second obstruction time-out on the bottle filler, and vandal-resistant push-button operated stainless-steel valve with front accessible cartridge and flow adjustment on the fountain, polished chrome-plated brass vandal resistant bubbler head with integral laminar anti-squirt flow, 1gpm (3.78L) laminar flow bottle filler, chrome-plated brass vandal-resistant waste strainer, stainless steel satin finish back panels, and 1-1/4" O.D.(3.2 cm) waste pipe. Manufactured to be lead-free by all known definitions including NSF/ ANSI/CAN 61-Section 9, NSF/ANSI/ CAN 372, California Proposition 65, and the Federal Safe Drinking Water Act. Product is compliant to California Health and Safety Code 116875 (AB 1953-2006), and 116876 (AB 100) "NSF/ANSI/CAN 61: Q ≤ 1".

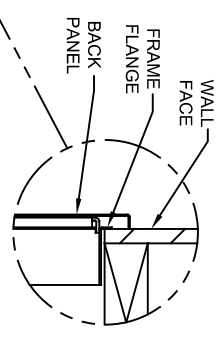
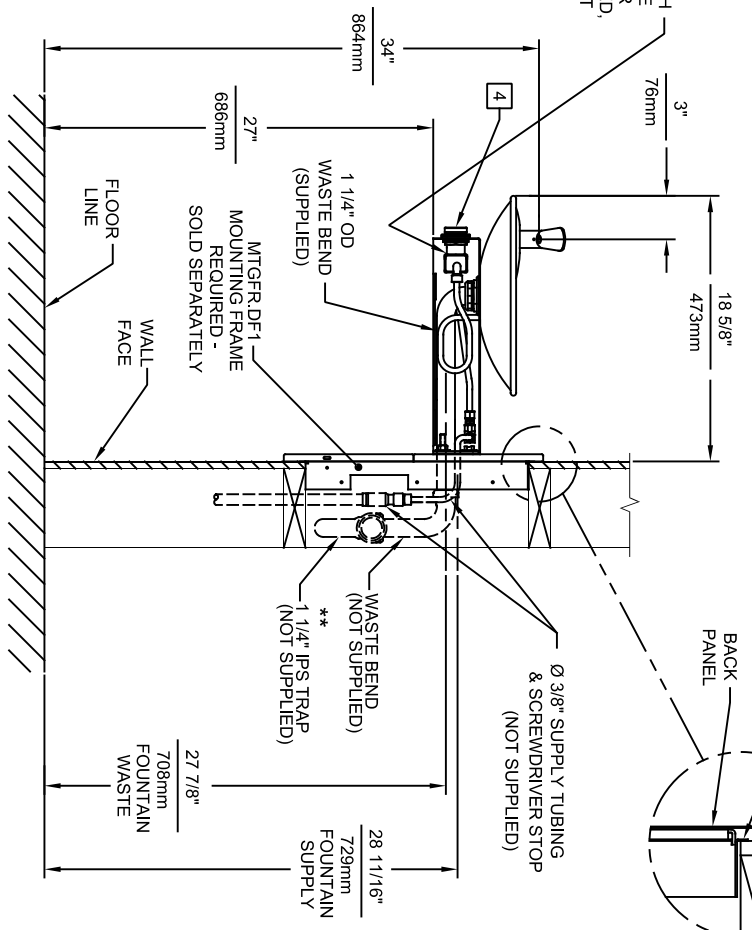
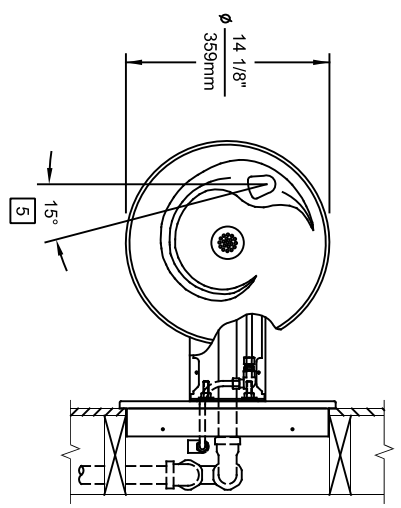


**NOTES:**

1. HOLD ROUGH-IN DIMENSIONS  $\pm 1/8"$  (3.2mm).
2. WHEN INSTALLING THIS UNIT, LOCAL, STATE, OR FEDERAL CODES SHOULD BE ADHERED TO FOR INSTALLATION DIMENSIONS (LOCATIONS), WASTE AND SUPPLY REQUIREMENTS OTHER THAN SHOWN.
3. \*\* INSTALLER MUST PROVIDE TRAP FOR PROPER INSTALLATION.
4. REFER TO 5874 SERIES OPERATION AND MAINTENANCE MANUAL FOR PUSH BUTTON AND VALVE INSTALLATION/MAINTENANCE INSTRUCTIONS.
5. MAXIMUM ADJUSTABLE RANGE IS  $15^\circ$  FROM PARALLEL TO BACK WALL.



REMOVE VALVE FROM PUSH BUTTON TO INSTALL WASTE ELBOW ONTO BOWL. AFTER WASTE ELBOW IS INSTALLED, REINSTALL VALVE & ADJUST FLOW

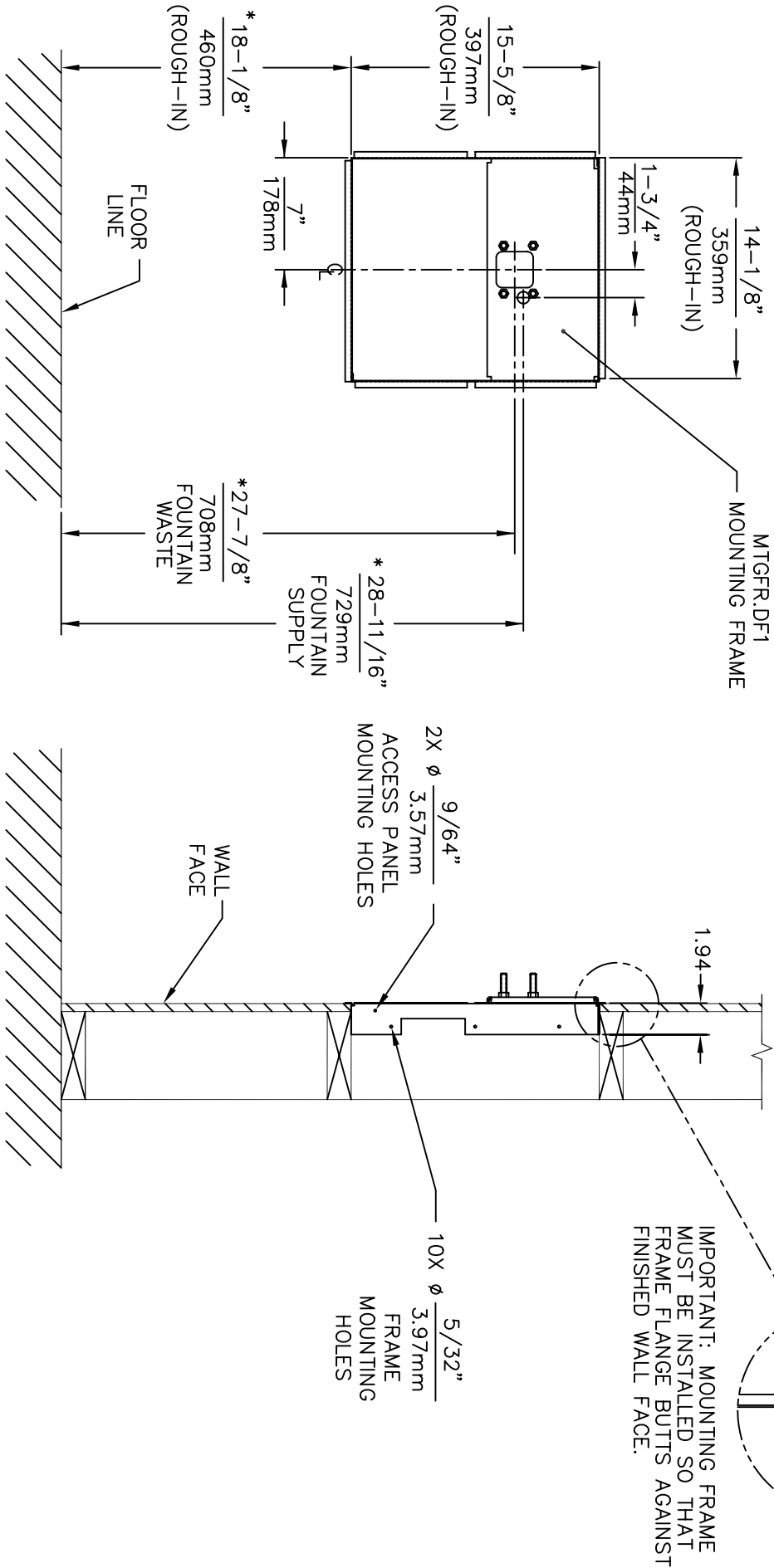


IMPORTANT: MOUNTING FRAME MUST BE INSTALLED SO THAT FRAME FLANGE BUTTS AGAINST FINISHED WALL FACE.

1459 KLEPPE LANE  
SPARKS, NEVADA, 89431  
(775) 359-4712 FAX (775) 359-7424  
E-MAIL: HAWS@HAWS.CO.COM  
WEBSITE: WWW.HAWS.CO.COM

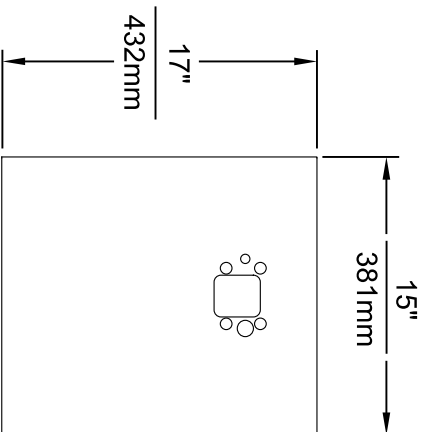
ECONO. REVISED PER BY: JL		MODEL(S)	
DRAWN: PM	DATE: 08/29/99	CHKD: JS/JP	1001MS
APPROVED: JL	DATE: 04/29/24	SCALE: 1:14	DRAWING TYPE: INSTALLATION
PART NUMBER: 0002076510.D		SIZE: A	SHEET: 1 OF 1
REVISION: 12			

HOLD ROUGH-IN DIMENSIONS  $\pm 1/8"$  (3.2mm).  
\* WHEN INSTALLING THIS UNIT, LOCAL, STATE, OR FEDERAL CODES SHOULD BE ADHERED TO. FOR INSTALLATION HEIGHTS OTHER THAN SHOWN, DIMENSIONS MARKED (\*) MUST BE ADJUSTED ACCORDINGLY.

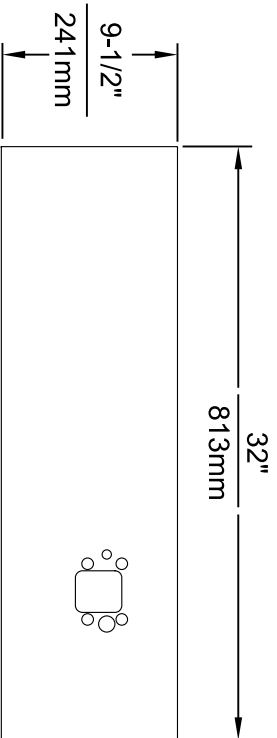


FOR USE WITH MODELS:  
1000, 1001 & 1001HPS

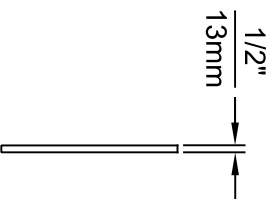
<b>Haws Corporation</b>	
FOR NO. 1	RESERVED FOR HAWES
DATE: 07/97	DATE: 07/97
SCALE: 1/16"	SCALE: 1/16"
MODEL(S):	MTGFR.DF1
INFO. FAX DOC #:	2MTGFR.DF1
INSTALLATION/FABRICATION:	
MOUNTING FRAME INFO. FAX : 1-888-FAX-HAWS (1-888-329-4297)	
1455 Kiappa Ln, Sparks NY 13843	
Phone: 775-359-4712 Fax: 775-359-7424	
Haws AG, Burgdorf 3, CH-3401, Burgdorf Switzerland	
Haws (Singapore) Pte Ltd, 74 Sungei Kadut Loop, Singapore 729531	
e-mail: Haws@hawsco.com Website: www.hawsco.com	
CC 0296	0296
REV. 5	REV. 5



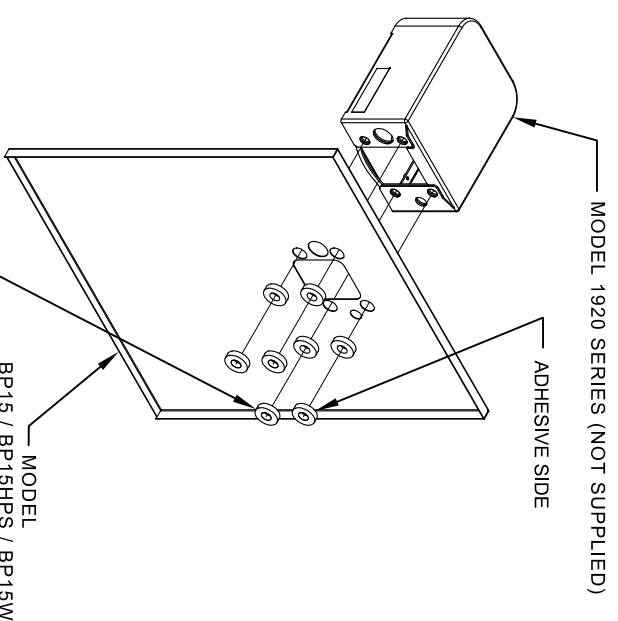
**MODEL BP15 / BP15HPS / BP15W**



**MODEL BP32 / BP32HPS / BP32W**



- NOTES:
1. WHEN INSTALLING THIS UNIT, LOCAL, STATE OR FEDERAL CODES SHOULD BE ADHERED TO.
  2. BOTTLE FILLER SHOWN FOR REFERENCE ONLY (NOT SUPPLIED).



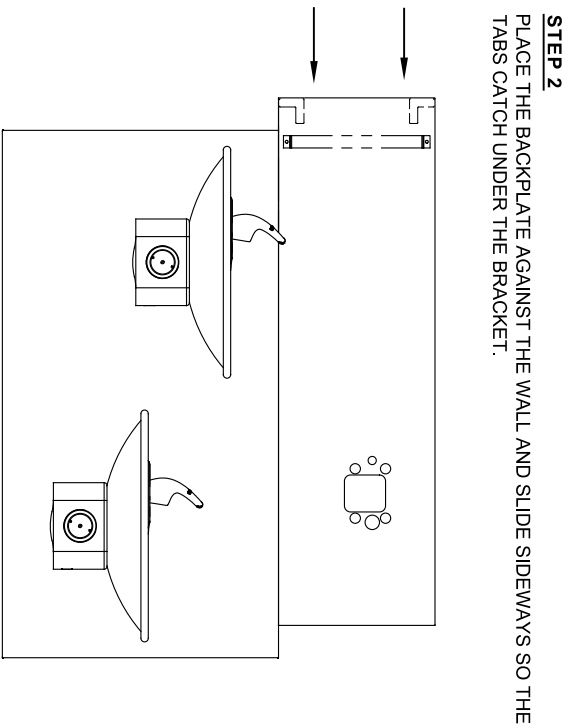
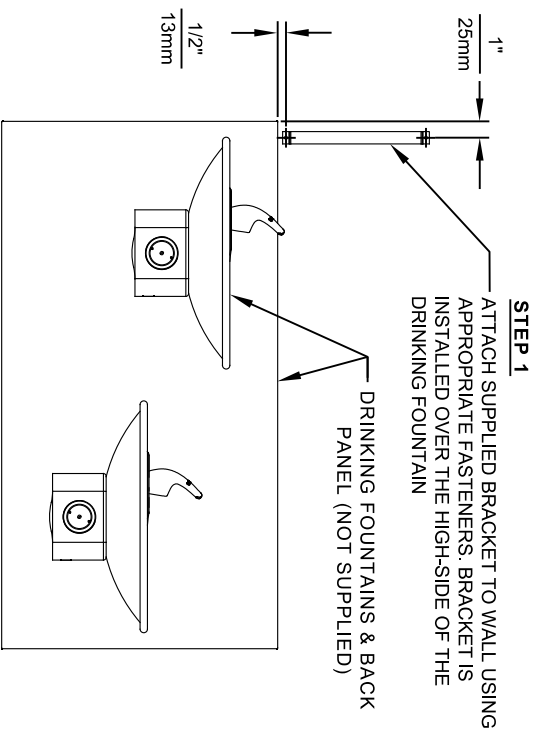
8 SPACERS (2 PER MOUNTING BOLT IF THE MOUNTING PLATE (MODEL 6700 - NOT SUPPLIED) IS INSTALLED BEHIND THE FINISHED WALL. USE 1 SPACER PER BOLT FOR RETROFITS WHERE THE MOUNTING PLATE (MODEL 6700R - NOT SUPPLIED) IS INSTALLED IN FRONT OF THE FINISHED WALL)

## INSTALLATION OVER SINGLE FOUNTAIN

SHOWN FROM REAR

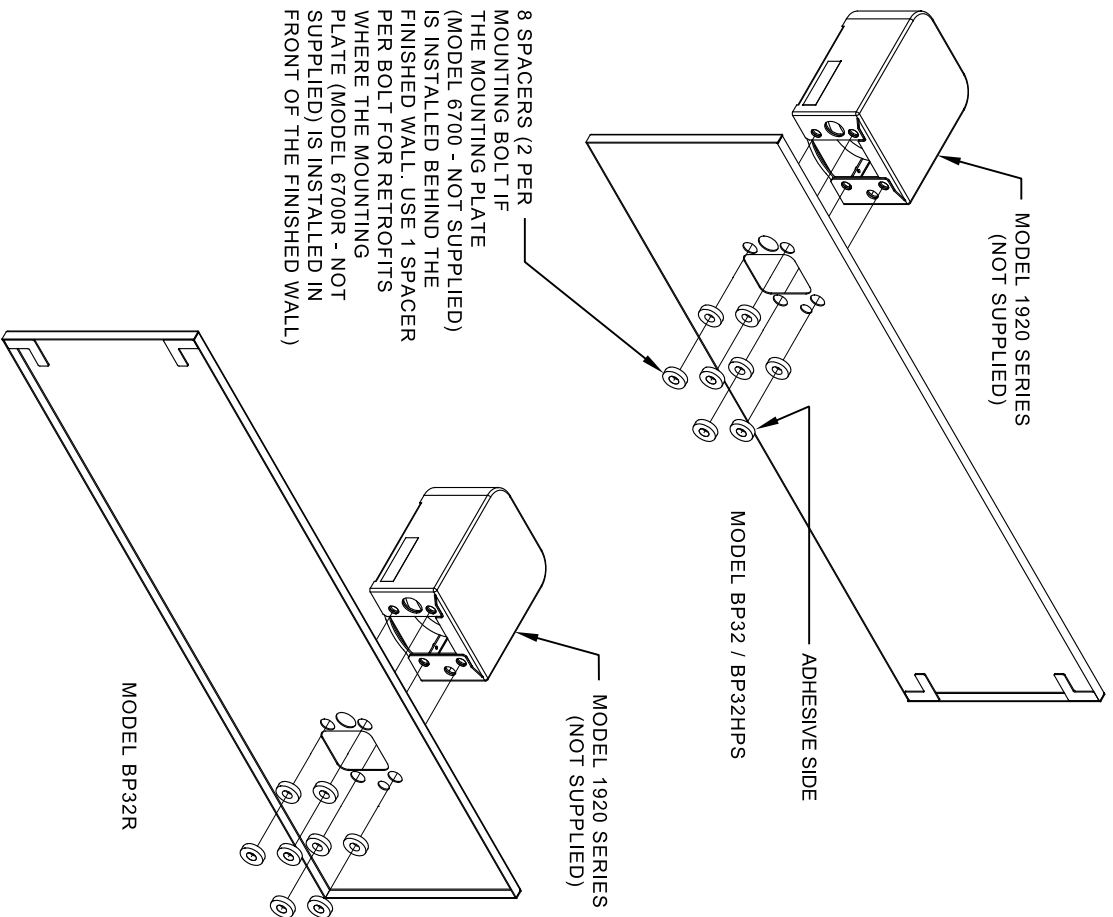
(SEE SHEET 3 OF 3 FOR INSTALLATION OF SPACERS ON COMBINATION BOTTLE FILLER AND FOUNTAIN BACK PANELS FOR CHILD HEIGHT APPLICATIONS - MODELS BP15C & BP15WC)

		<b>Since 1906</b>	
1455 KLEPPE LANE SPARKS, NEVADA 89431 (775) 359-4712 FAX (775) 359-7424 E-MAIL: HAWS@HAWS.CO.COM WEBSITE: WWW.HAWS.CO.COM		DRAWING, BACK PANEL, SPACER INSTALLATION FOR BP15 SERIES & BP32 SERIES, BOTTLE FILLER	
EQUIP. NO. REQUESTED PER BY:	MODEL(S)	PART NUMBER	
02/11/25		0510000493	
DATE	SCALE: 1:1	DRAWING TYPE: INSTALLATION	REVISION
02/11/25	1:1	INSTALLATION	6
APPROVED: F.V.	DATE	SCALE	SIZE
	02/11/25	1:1	A
DRAWING, BACK PANEL, SPACER INSTALLATION		SHEET 1 OF 3	



**STEP 3**  
INSTALL THE BOTTLE FILLER (NOT SUPPLIED) PER THE INSTRUCTIONS SUPPLIED WITH THE UNIT.

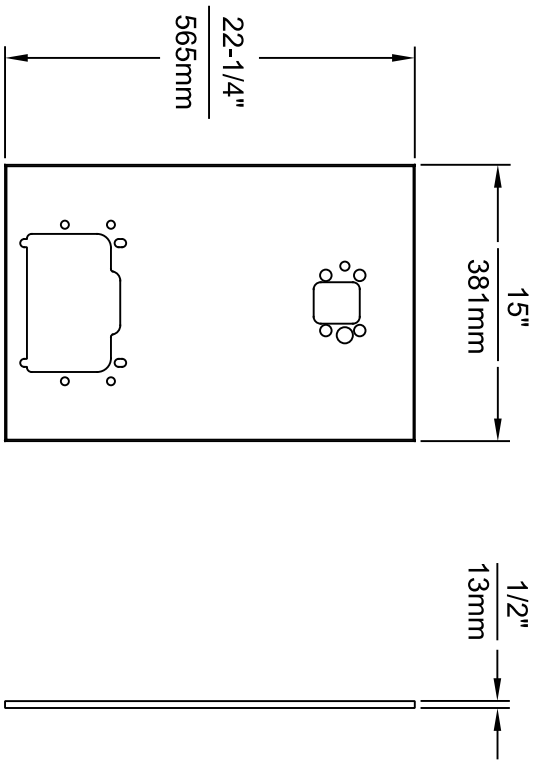
- NOTES:
1. WHEN INSTALLING THIS UNIT, LOCAL, STATE OR FEDERAL CODES SHOULD BE ADHERED TO.
  2. BOTTLE FILLERS, DRINKING FOUNTAINS & DRINKING FOUNTAIN BACK PANELS SHOWN FOR REFERENCE ONLY (NOT SUPPLIED).



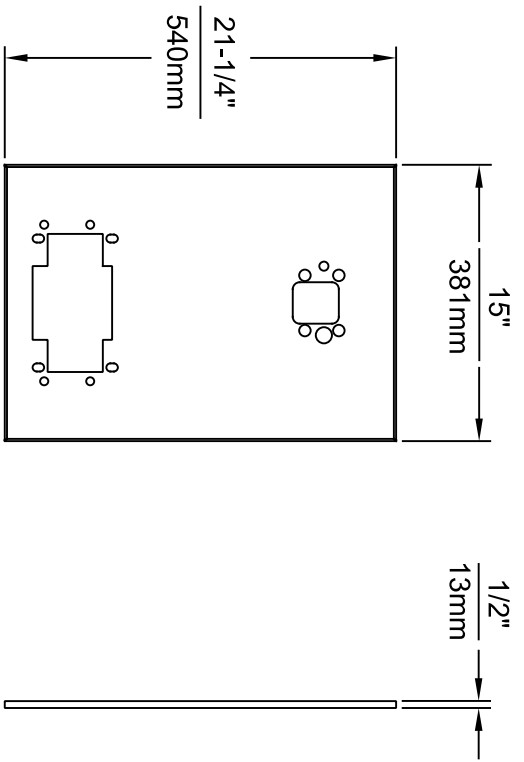
## INSTALLATION OVER DOUBLE FOUNTAIN

SHOWN FROM REAR

EQU. NO. REQUESTED PER BY: _____		MODEL(S)	
SCALE: 1:1	DATE: 02/11/25	DRAWING, BACK PANEL, SPACER INSTALLATION FOR BP15 SERIES & BP32 SERIES, BOTTLE FILLER	
SCALE: 1:1	DATE: 02/11/25	INSTALLATION	SIZE: A
 <p><b>Haws</b> Since 1906</p>		1455 KLEPPE LANE SPARKS, NEVADA 89431 (775) 359-4712 FAX (775) 359-7424 E-MAIL: HAWS@HAWS.CO.COM WEBSITE: WWW.HAWS.CO.COM	
DRAWN: _____ CHECKED: _____ APPROVED: _____ P.V. _____	DATE: 02/11/25 DATE: _____	PART NUMBER 0510000493	SHEET 2 OF 3

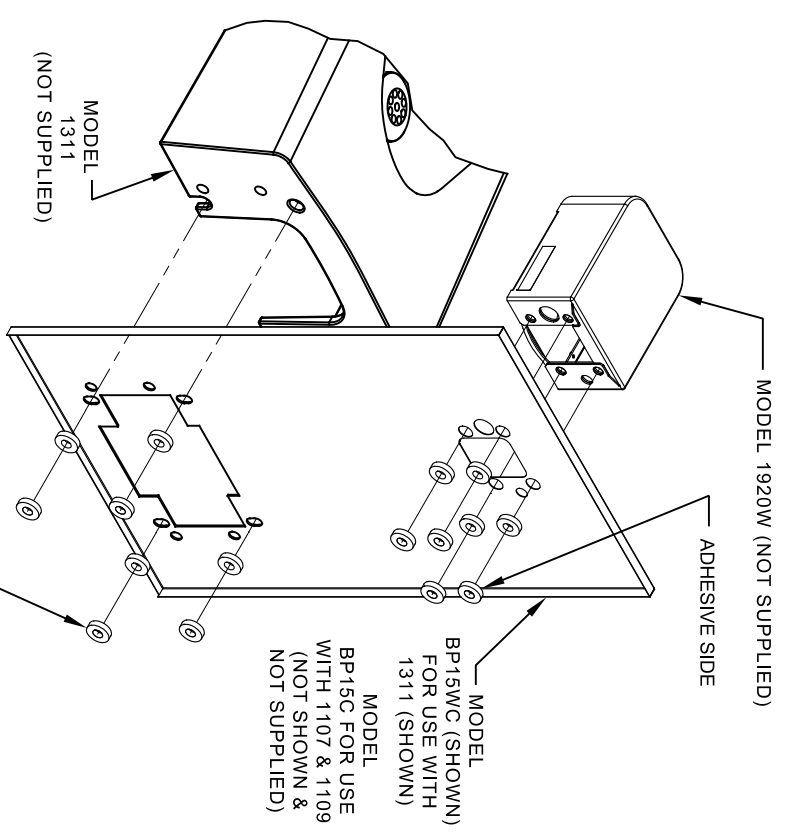


**MODEL BP15C**  
(FOR MODELS 1107 & 1109)



**MODEL BP15WC**  
(FOR MODEL 1311)

- NOTES:
1. WHEN INSTALLING THIS UNIT, LOCAL, STATE OR FEDERAL CODES SHOULD BE ADHERED TO.
  2. BOTTLE FILLER AND DRINKING FOUNTAIN SHOWN FOR REFERENCE ONLY (NOT SUPPLIED).

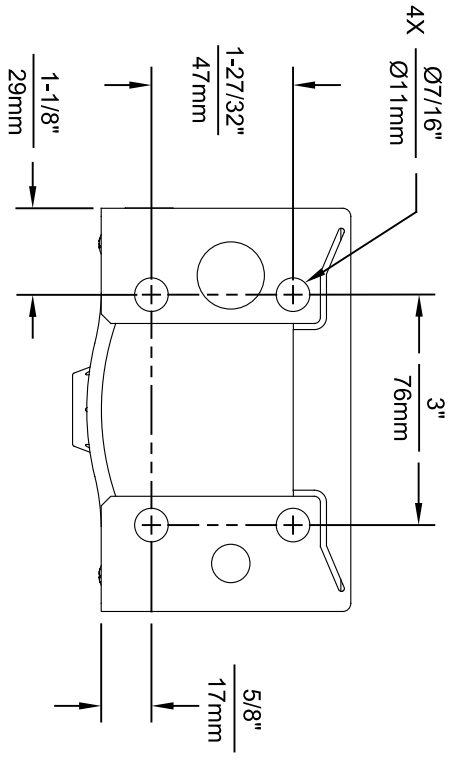
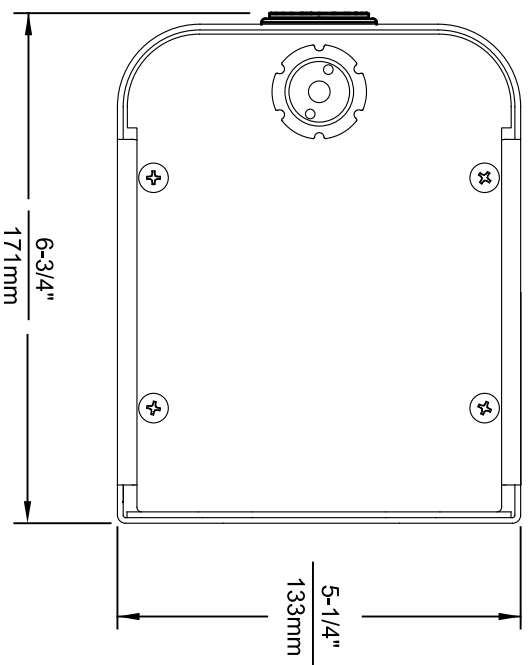
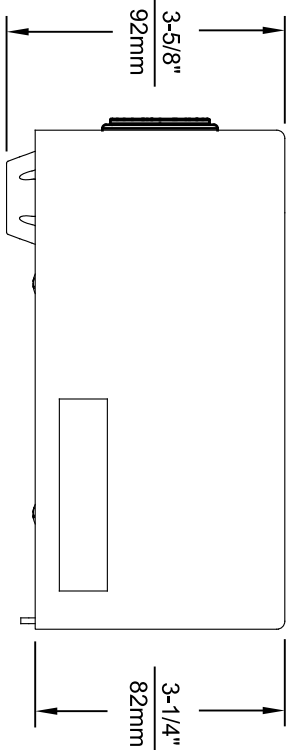


- 16 SPACERS (2 PER MOUNTING BOLT IF BOTH MOUNTING PLATES (MODEL 6700 - NOT SUPPLIED) ARE INSTALLED BEHIND THE FINISHED WALL. USE 1 SPACER PER BOLT FOR RETROFITS WHERE BOTH MOUNTING PLATES (MODEL 6700R - NOT SUPPLIED) ARE INSTALLED IN FRONT OF THE FINISHED WALL)

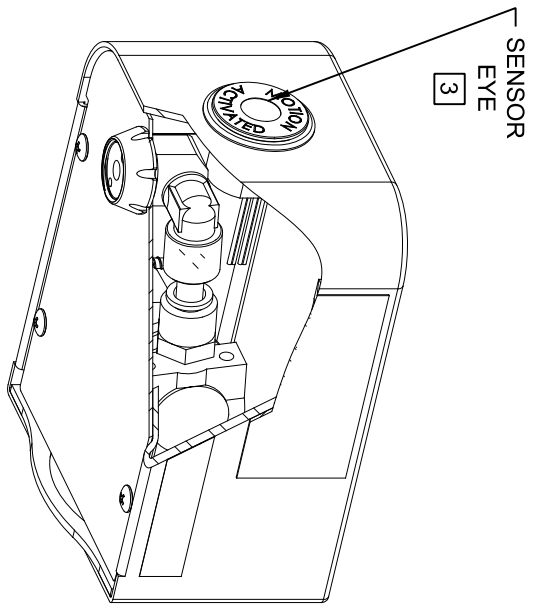
**ONE PIECE INSTALLATION ON SINGLE FOUNTAIN**

SHOWN FROM REAR  
(MODEL BP15C & BP15WC ARE COMBINATION BOTTLE FILLER AND FOUNTAIN BACK PANELS USED FOR CHILD HEIGHT APPLICATIONS ONLY ON MODELS 1107, 1109 & 1311 - BOTTLE FILLER & DRINKING FOUNTAIN NOT SUPPLIED)

		<b>Since 1906</b>	
1455 KLEPPE LANE SPARKS, NEVADA, 89431 (775) 359-4712 FAX (775) 359-7424 E-MAIL: HAWS@HAWSCC.COM WEBSITE: WWW.HAWSCC.COM		<p>EQN. NO. REVISED PER BY: MODEL(S)                  SIZE EQN. 6146 N.J.G.                  DRAWN BY DATE CHK'D. J.G.                  APPROVED: DATE                  F.V. 02/11/25 SCALE: 1:1 DRAWING TYPE: INSTALLATION</p> <p>DRAWING, BACK PANEL, SPACER INSTALLATION                  FOR BP15 SERIES &amp; BP32 SERIES, BOTTLE FILLER</p> <p>PART NUMBER: 0510000493                  REVISION: 6</p>	



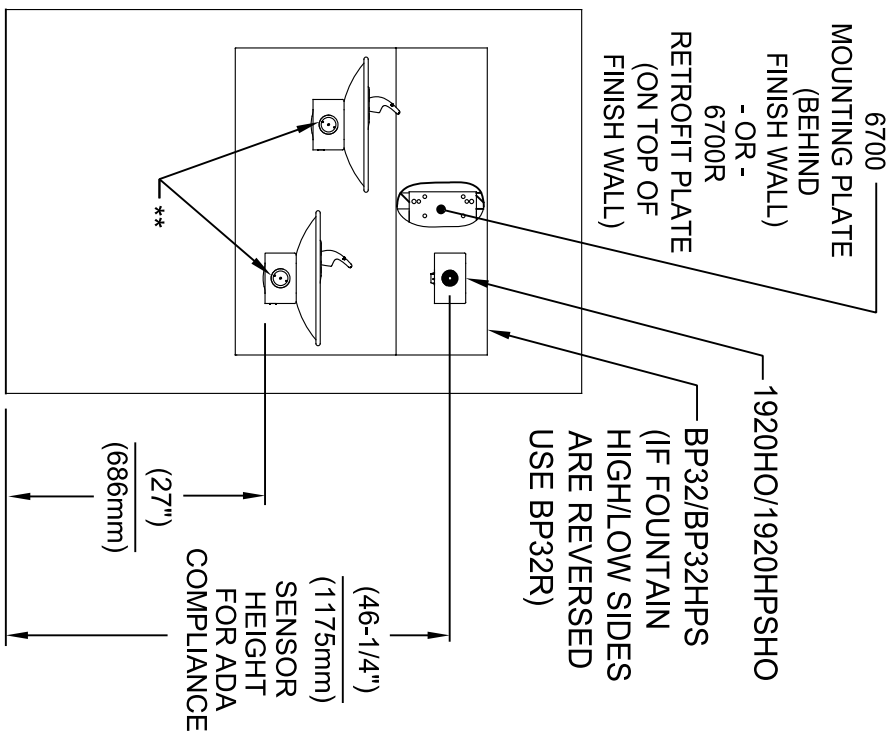
1920HO SERIES MOUNTING HOLE LOCATIONS  
(3/8\"-16 UNC MOUNTING HARDWARE NOT SUPPLIED)



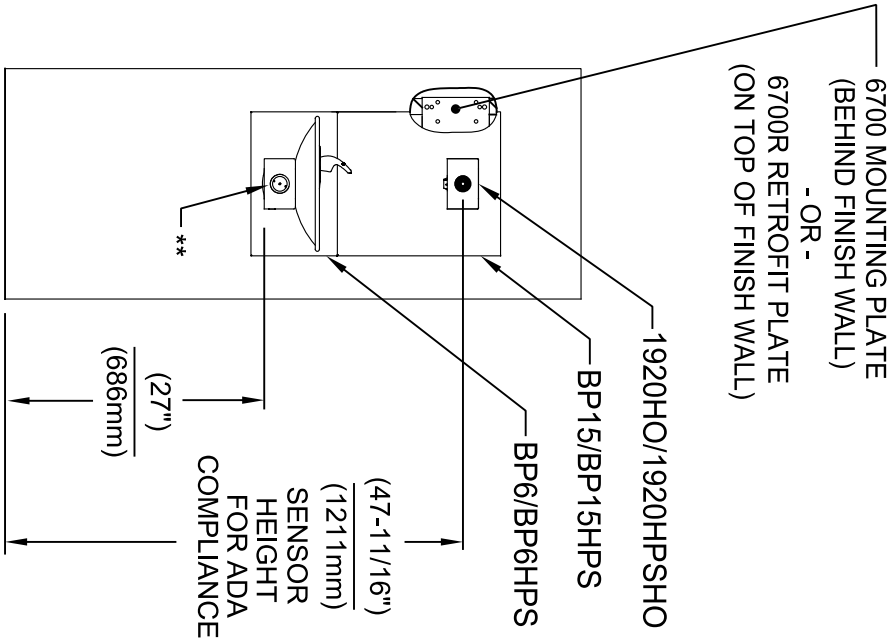
NOTES:

1. SEE SHEETS 2 THRU 7 FOR BOTTLE FILLER ADULT ADA HEIGHT APPLICATIONS AND SHEET 8 FOR CHILD ADA HEIGHT APPLICATIONS.
2. WHEN INSTALLING THIS UNIT, LOCAL, STATE OR FEDERAL CODES SHOULD BE ADHERED TO FOR INSTALLATION LOCATIONS, WASTE AND SUPPLY REQUIREMENTS OTHER THAN SHOWN.
- 3 REFER TO 1RKHO.H OPERATION & MAINTENANCE INSTRUCTIONS FOR SENSOR SETUP.

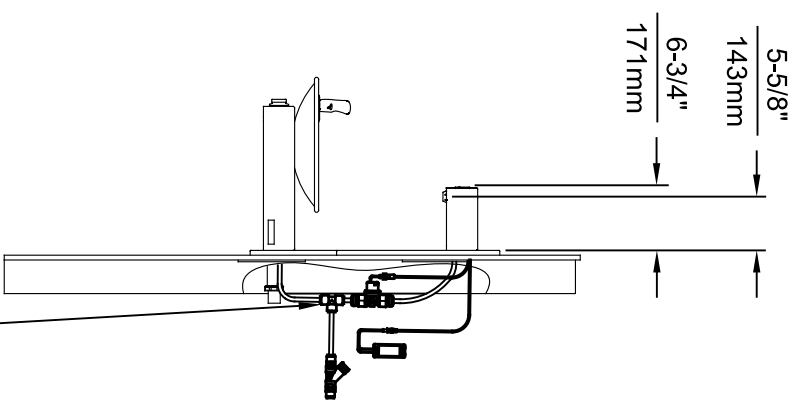
 <p><b>Haws</b> Since 1906</p>		1455 KLEPPLE LANE SPARKS, NEVADA 89431 (775) 359-4712 FAX (775) 359-7424 E-MAIL: HAWS@HAWS.CO.COM WEBSITE: WWW.HAWS.CO.COM	
EGN NO. REVISED PER BY: FV DRAWN: ECN: 6136 DATE: CHK'D: KM FV 08/18/20	MODEL(S) 1920HO/1920HPSHO/1920WH0	SCALE: N/A DRAWING TYPE:	INSTALLATION:
APPROVED: FV DATE: 11/04/24	PART NUMBER 0510001063.D	SIZE: A1 SHEET: 1 OF 8	REVISION: 8



**INSTALLATION ABOVE HAWS 1011 & H1011.8 SERIES**



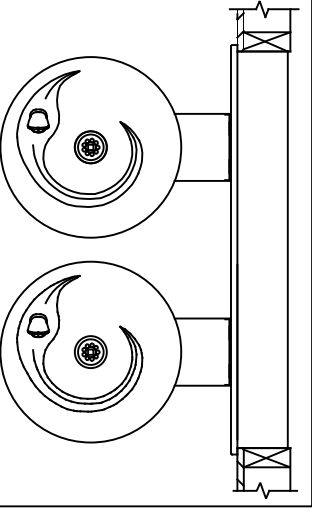
**INSTALLATION ABOVE HAWS 1001 & H1001.8 SERIES**



3/8" O.D. SUPPLY TUBING AND 3/8" O.D. PUSH-IN TEE SUPPLIED. (CONNECT TO FOUNTAIN SUPPLY LINE)

\*\* EXISTING PUSH BUTTON ASSEMBLY SHOWN, CAN BE CONVERTED TO HANDS OFF STYLE, USING RETRO-FIT KIT MODEL 1RKHO.H OR 2RKHO.H DEPENDING ON CUSTOMER REQUIREMENTS.

- \* IF YOUR FOUNTAIN IS THIS STYLE USE THESE DIMENSIONS
1. SEE SEPARATE INSTALLATION DRAWINGS FOR MOUNTING PLATES AND BACK PANELS (SHOWN FOR REFERENCE - NOT SUPPLIED).
  2. WHEN INSTALLING THIS UNIT, LOCAL, STATE OR FEDERAL CODES SHOULD BE ADHERED TO FOR INSTALLATION LOCATIONS, WASTE & SUPPLY REQUIREMENTS OTHER THAN SHOWN.

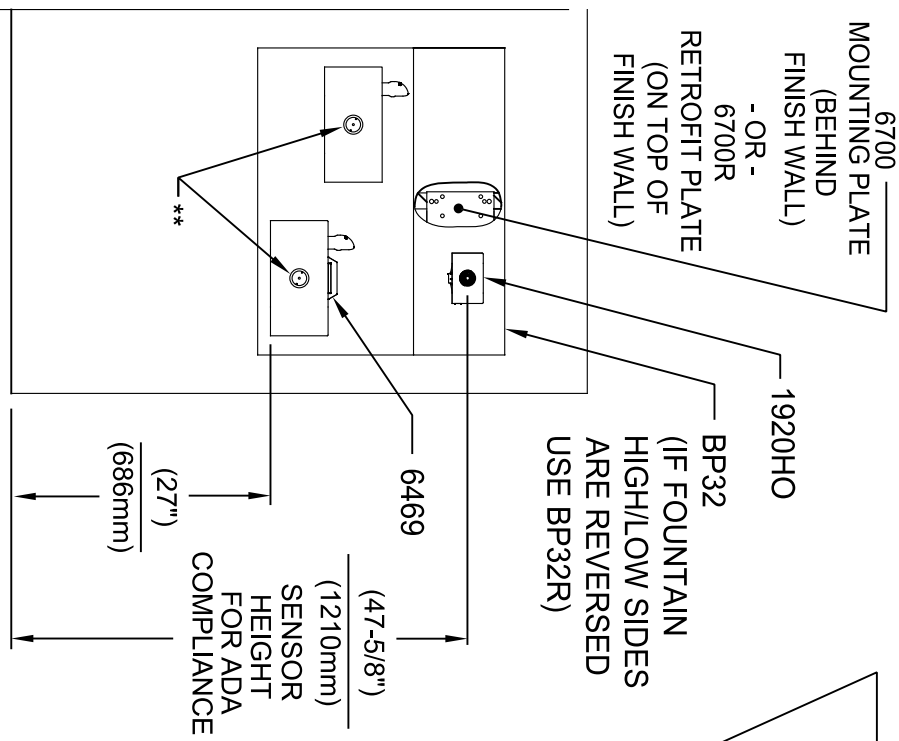


**Haws**  
Since 1906

1455 KLEPPLE LANE  
SPARKS, NEVADA 89431  
(775) 359-4712 FAX (775) 359-7424  
E-MAIL: HAWS@HAWS.CO.COM  
WEBSITE: WWW.HAWS.CO.COM

EGN NO. REVISED PER BY:	MODEL(S)	SCALE	DATE	DATE	INSTALLATION
5574 EGN: 6136 FV	1920HO/1920HPSHO/1920WHO	N/A	11/8/24		SIZE: A1 SHEET: 2 OF 8
DRAWN: FV	CHK'D: KM	DRAWING TYPE:			
FV	KM				
APPROVED: FV					
PART NUMBER	0510001063.D	REVISION	8		

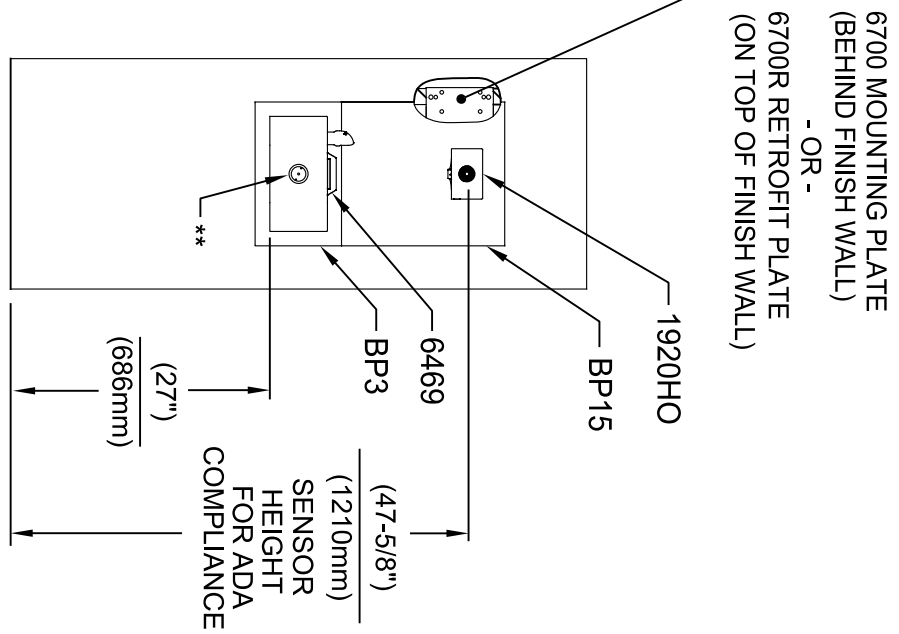




**INSTALLATION ABOVE HAWS 1119 & H1119.8 SERIES**

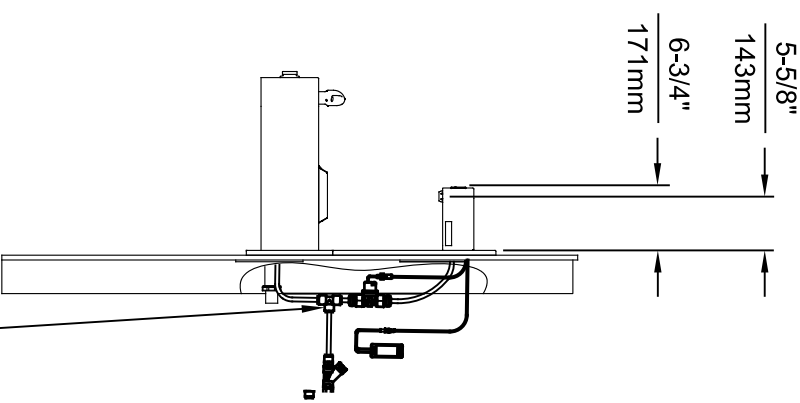
\* IF YOUR FOUNTAIN IS THIS STYLE USE THESE DIMENSIONS

1. SEE SEPARATE INSTALLATION DRAWINGS FOR MOUNTING PLATES, BACK PANELS AND DRIP TRAY (NOT SUPPLIED).
2. WHEN INSTALLING THIS UNIT, LOCAL, STATE OR FEDERAL CODES SHOULD BE ADHERED TO FOR INSTALLATION LOCATIONS, WASTE & SUPPLY REQUIREMENTS OTHER THAN SHOWN.

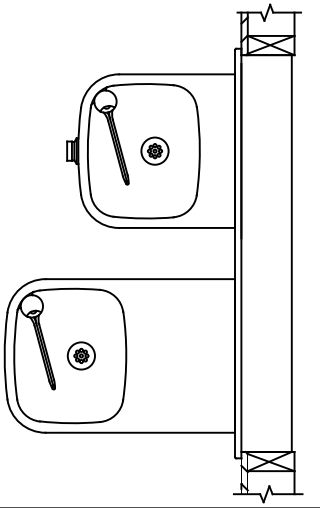


**INSTALLATION ABOVE HAWS 1109 & H1109.8 SERIES  
SEE SHEET 8 FOR INSTALLATION AT CHILD HEIGHT**

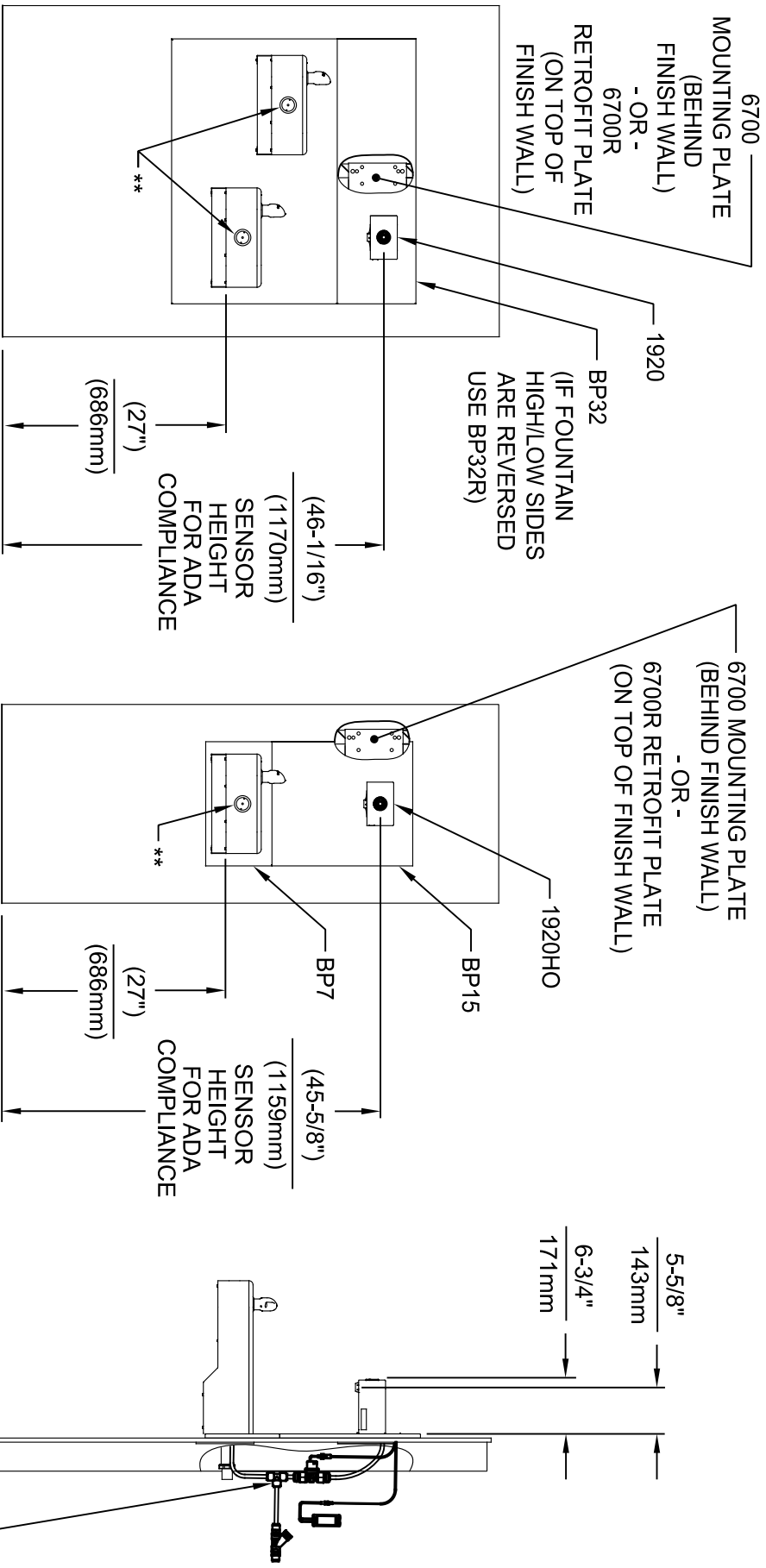
\*\* EXISTING PUSH BUTTON ASSEMBLY SHOWN, CAN BE CONVERTED TO HANDS OFF STYLE, USING RETRO-FIT KIT MODEL 1RKHO.H OR 2RKHO.H DEPENDING ON CUSTOMER REQUIREMENTS.



3/8" O.D. SUPPLY TUBING AND 3/8" O.D. PUSH-IN TEE SUPPLIED. (CONNECT TO FOUNTAIN SUPPLY LINE)



EGN NO. REVISED PER BY:	DATE	SCALE	DATE	INSTALLATION
5574 EGN: 6136	FV	N/A	11/8/24	
DRAWN:	DATE	CHK'D:	DATE	
FV	08/18/20	KM		
APPROVED:	DATE	SCALE	N/A	DRAWING TYPE:
FV	11/8/24			
MODEL(S)	1920HO/1920HPSHO/1920WHO			
1455 KLEPPLE PLANE				
SPARKS, NEVADA 89431				
(775) 359-4712 FAX (775) 359-7424				
E-MAIL: HAWS@HAWS.CO.COM				
WEBSITE: WWW.HAWS.CO.COM				
PART NUMBER	0510001063.D			
REVISION	8			
SIZE: A1	SHEET: 3 OF 8			

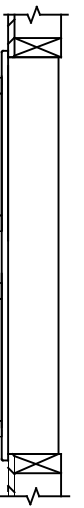


**INSTALLATION ABOVE HAWS 1117L & H1117.8 SERIES**

**INSTALLATION ABOVE HAWS 1107L & H1107.8 SERIES**

\* IF YOUR FOUNTAIN IS THIS STYLE USE THESE DIMENSIONS

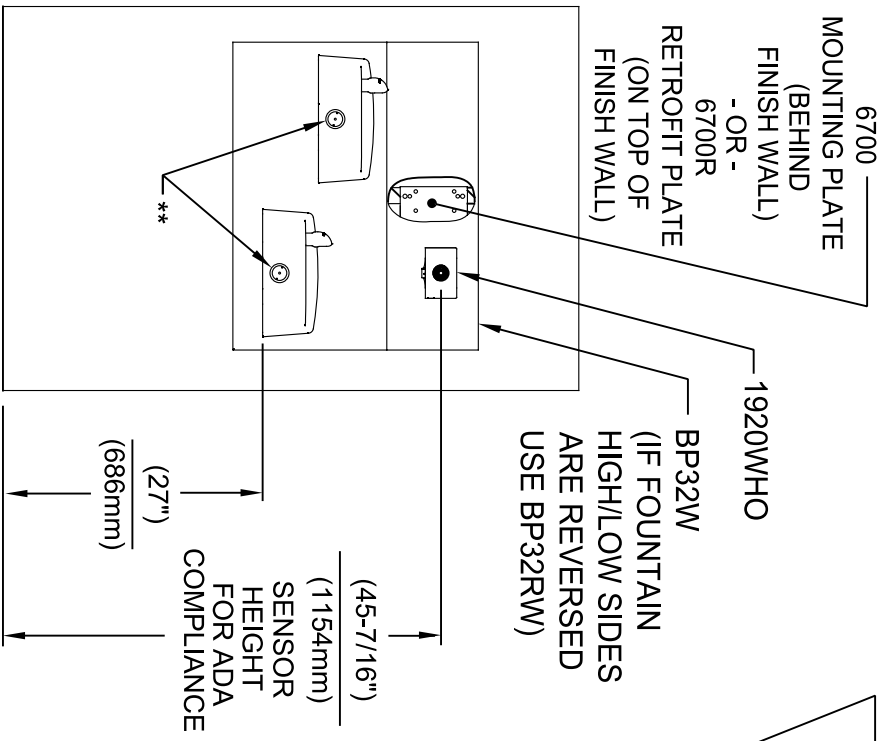
1. SEE SEPARATE INSTALLATION DRAWINGS FOR MOUNTING PLATES AND BACK PANELS (SHOWN FOR REFERENCE - NOT SUPPLIED).
2. WHEN INSTALLING THIS UNIT, LOCAL, STATE OR FEDERAL CODES SHOULD BE ADHERED TO FOR INSTALLATION LOCATIONS, WASTE & SUPPLY REQUIREMENTS OTHER THAN SHOWN.



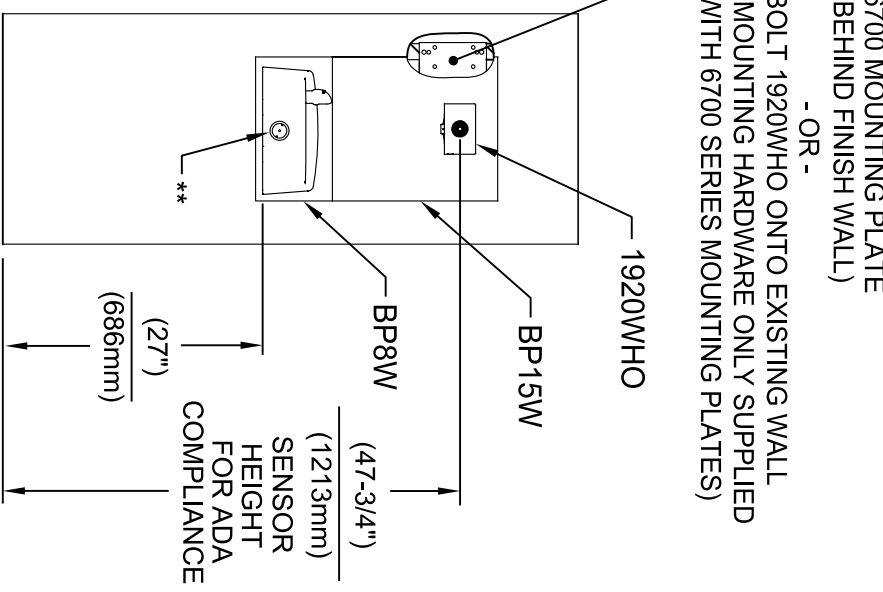
\*\* EXISTING PUSH BUTTON ASSEMBLY SHOWN, CAN BE CONVERTED TO HANDS OFF STYLE, USING RETRO-FIT KIT MODEL 1RKHO.H OR 2RKHO.H DEPENDING ON CUSTOMER REQUIREMENTS.

3/8" O.D. SUPPLY TUBING AND 3/8" O.D. PUSH-IN TEE SUPPLIED. (CONNECT TO FOUNTAIN SUPPLY LINE)

<p><b>Haws</b> Since 1906</p>		1455 KLEPPLELANE SPARKS, NEVADA 89431 (775) 359-4712 FAX (775) 359-7424 E-MAIL: HAWS@HAWSCO.COM WEBSITE: WWW.HAWSCO.COM	
EGN NO. REVISED PER BY: 5574 EGN: 6136 FV DRAWN: DATE: CHK'D: FV FV 08/18/20 KM	MODEL(S) 1920HO/1920HPSHO/1920WHO	SCALE: N/A DRAWING TYPE:	INSTALLATION: PART NUMBER: 0510001063.D REVISION: 8

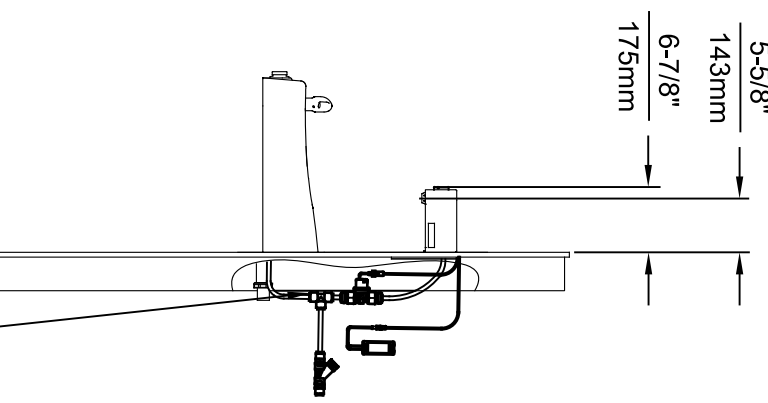


**INSTALLATION ABOVE HAWS 1501**



**INSTALLATION ABOVE HAWS 1311**

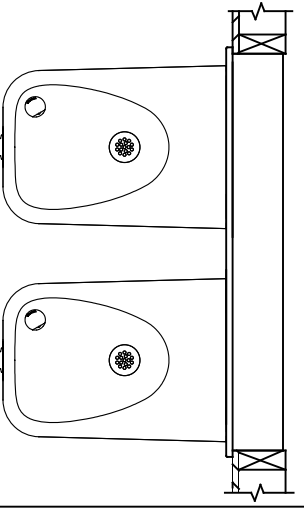
**SEE SHEET 8 FOR INSTALLATION AT CHILD HEIGHT**



3/8" O.D. SUPPLY TUBING AND 3/8" O.D. PUSH-IN TEE SUPPLIED. (CONNECT TO FOUNTAIN SUPPLY LINE)

\* IF YOUR FOUNTAIN IS THIS STYLE USE THESE DIMENSIONS

1. SEE SEPARATE INSTALLATION DRAWINGS FOR MOUNTING PLATES AND BACK PANELS (SHOWN FOR REFERENCE - NOT SUPPLIED).
2. WHEN INSTALLING THIS UNIT, LOCAL, STATE OR FEDERAL CODES SHOULD BE ADHERED TO FOR INSTALLATION LOCATIONS, WASTE & SUPPLY REQUIREMENTS OTHER THAN SHOWN.



\*\* EXISTING PUSH BUTTON ASSEMBLY SHOWN. CAN BE CONVERTED TO HANDS OFF STYLE, USING RETRO-FIT KIT MODEL 1RKHO.H OR 2RKHO.H DEPENDING ON CUSTOMER REQUIREMENTS.

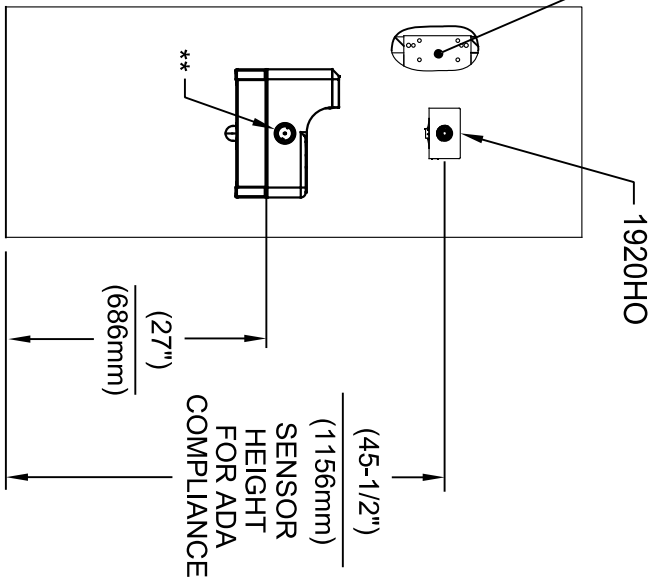
5-5/8"  
143mm  
6-7/8"  
175mm

**Haws**  
Since 1906

1455 KLEPPLE LANE  
SPARKS, NEVADA 89431  
(775) 359-4712 FAX (775) 359-7424  
E-MAIL: HAWS@HAWSCO.COM  
WEBSITE: WWW.HAWSCO.COM

EGN NO. REVISED PER BY:	MODEL(S)	SCALE:	DATE:	DATE:	DATE:
5574	1920HO/1920HPSHO/1920WHO	N/A	11/8/24		
DRAWN:	DATE:	CHK'D:	DATE:	DATE:	DATE:
FV	08/18/20	KM			
APPROVED:	SCALE:	N/A	DRAWING TYPE:	INSTALLATION:	SIZE: A1 SHEET 5 OF 8
PART NUMBER	0510001063.D	REVISION	8		

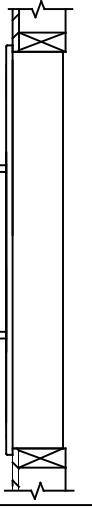
6700 MOUNTING PLATE  
(BEHIND FINISH WALL)  
- OR -  
BOLT 1920HO ONTO EXISTING WALL  
(MOUNTING HARDWARE ONLY SUPPLIED  
WITH 6700 SERIES MOUNTING PLATES)



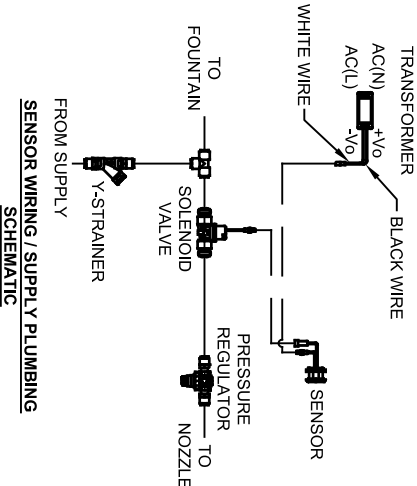
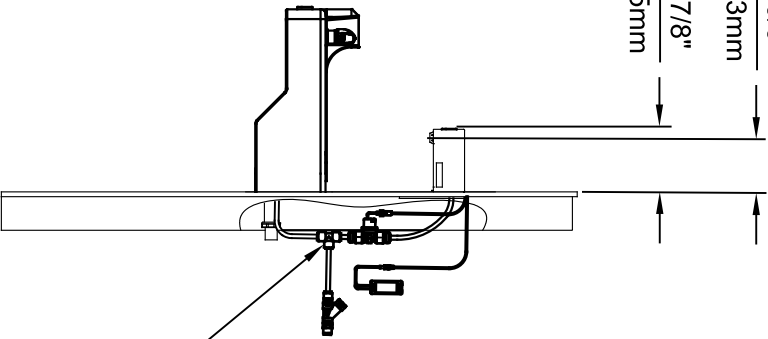
**INSTALLATION ABOVE HAWS 1047**

\* IF YOUR FOUNTAIN IS THIS STYLE USE THESE DIMENSIONS

1. SEE SEPARATE INSTALLATION DRAWINGS FOR MOUNTING PLATES AND BACK PANELS (SHOWN FOR REFERENCE - NOT SUPPLIED).
2. WHEN INSTALLING THIS UNIT, LOCAL, STATE OR FEDERAL CODES SHOULD BE ADHERED TO FOR INSTALLATION LOCATIONS, WASTE & SUPPLY REQUIREMENTS OTHER THAN SHOWN.



5-5/8"  
143mm  
6-7/8"  
175mm

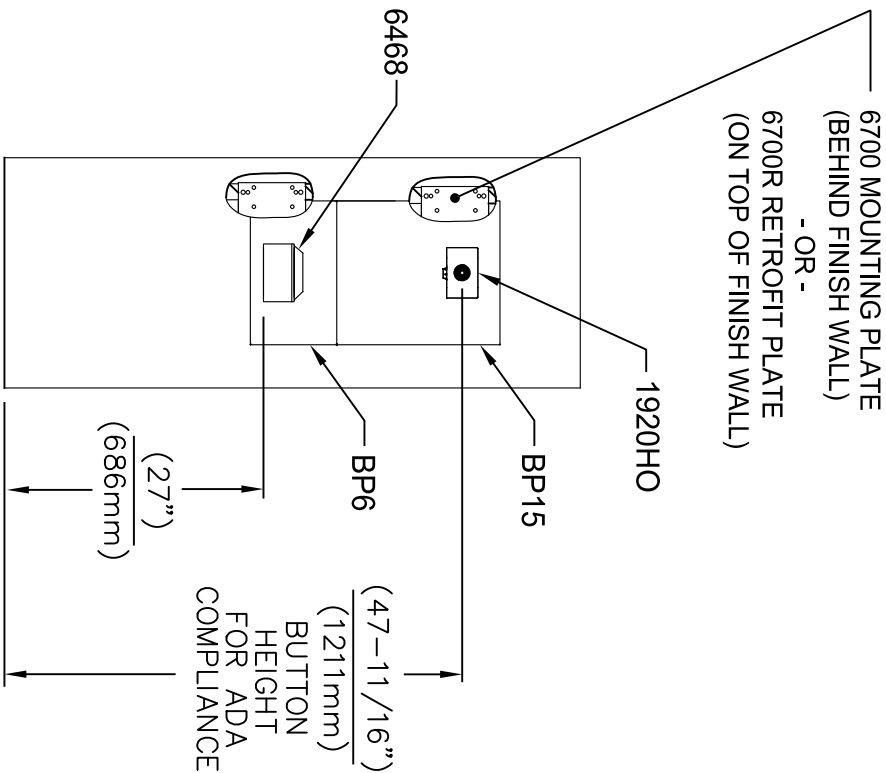


3/8" O.D. SUPPLY TUBING AND 3/8" O.D. PUSH-IN TEE SUPPLIED. (CONNECT TO FOUNTAIN SUPPLY LINE)

\*\* EXISTING PUSH BUTTON ASSEMBLY SHOWN, CAN BE CONVERTED TO HANDS OFF STYLE, USING RETRO-FIT KIT MODEL 1RKHO.H.

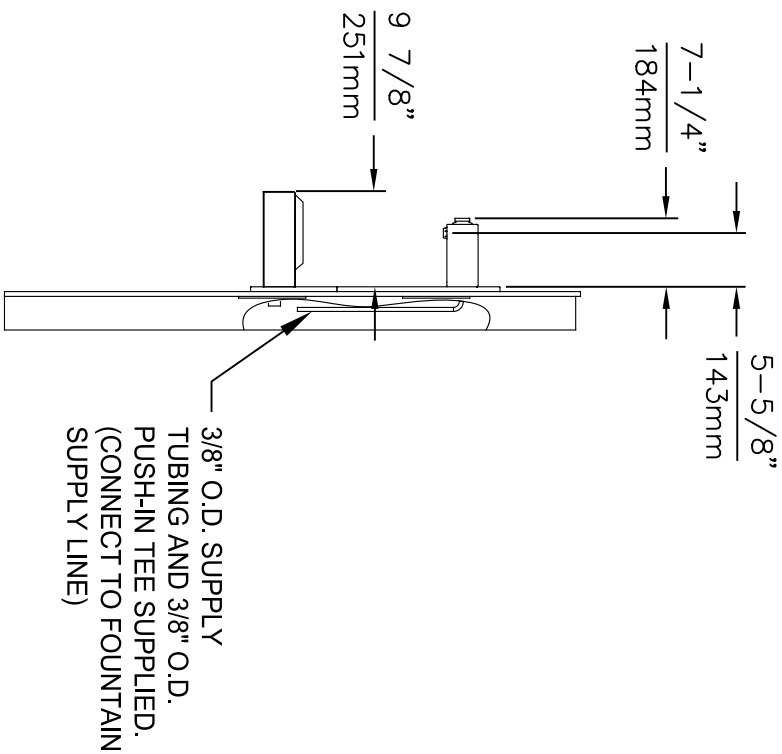



EGN NO. REVISED PER BY:	DATE	SCALE	INSTALLATION
5574	08/18/20	N/A	
DRAWN:	DATE	CHECKED:	
FV	08/18/20	KM	
APPROVED:	DATE	SCALE	DRAWING TYPE
FV	11/04/24	N/A	INSTALLATION
MODEL(S)	SIZE	SHEET 6 OF 8	
1920HO/1920HPSHO/1920WHO	A	8	
1455 KLEPPLE LANE SPARKS, NEVADA 89431 (775) 359-4712 FAX (775) 359-7424 E-MAIL: HAWS@HAWS.CO.COM WEBSITE: WWW.HAWS.CO.COM			
PART NUMBER		REVISION	
0510001063.D		8	

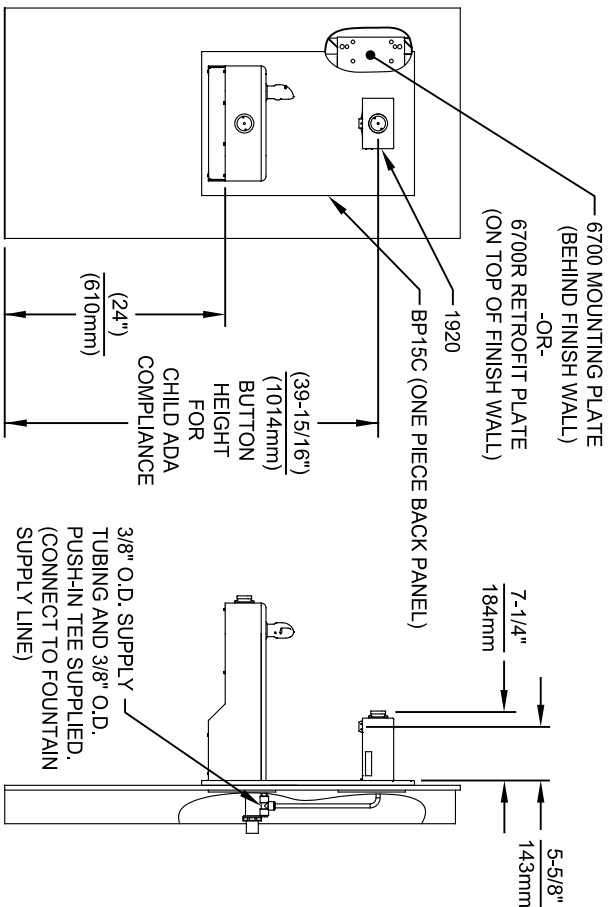


**INSTALLATION ABOVE 6468**

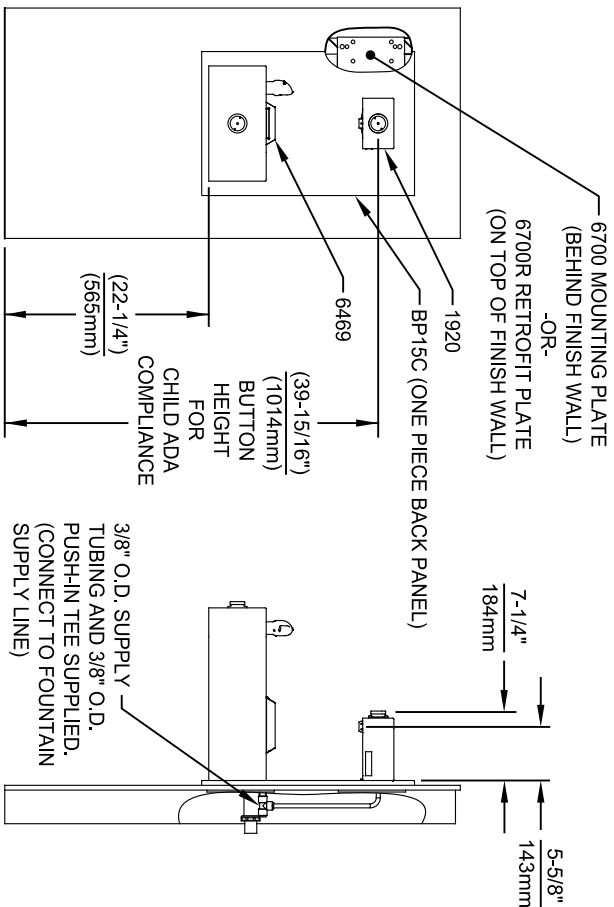
1. SEE SEPARATE INSTALLATION DRAWINGS FOR MOUNTING PLATES AND BACK PANELS (SHOWN FOR REFERENCE - NOT SUPPLIED).
2. WHEN INSTALLING THIS UNIT, LOCAL, STATE OR FEDERAL CODES SHOULD BE ADHERED TO FOR INSTALLATION LOCATIONS, WASTE & SUPPLY REQUIREMENTS OTHER THAN SHOWN.



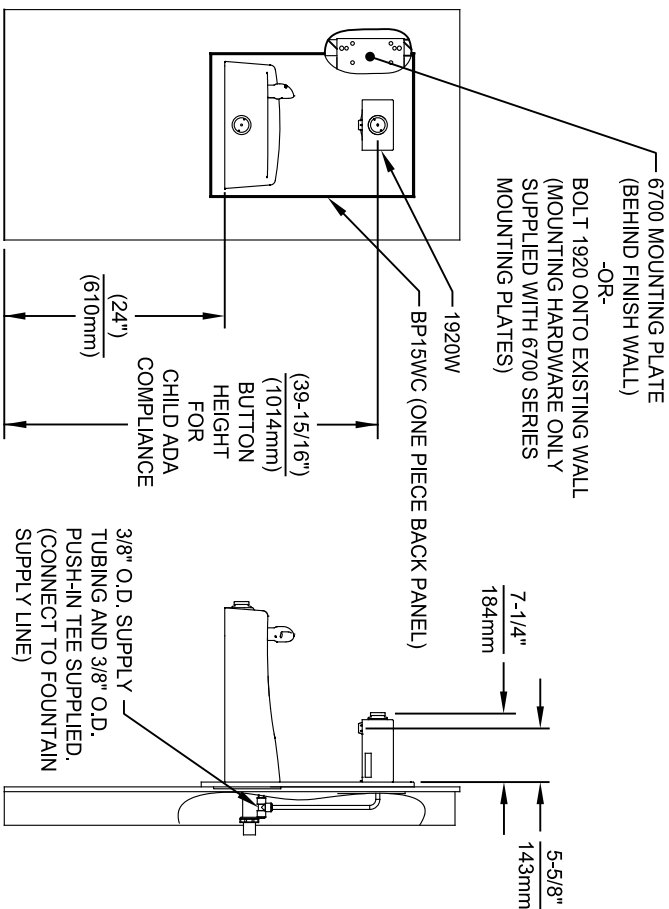
		<b>Since 1906</b>	
EGN NO. REVISED PER BY: FV 5744 EGN: 6136		MODEL(S) 1920HO/1920HPSHO/1920WHO	
DRAWN: FV 10/04/21	DATE: 11/04/24	SCALE: N/A	DRAWING TYPE: INSTALLATION
APPROVED: FV		SIZE: A1	SHEET: 7 OF 8
1455 KLEPPLE LANE SPARKS, NEVADA 89431 (775) 359-4712 FAX (775) 359-7424 E-MAIL: HAWS@HAWSCO.COM WEBSITE: WWW.HAWSCO.COM		PART NUMBER 0510001063.D REVISION 8	



INSTALLATION ABOVE HAWS 1107L & H1107.8 SERIES



INSTALLATION ABOVE HAWS 1109, 1109.14 & H1109.8 SERIES  
MUST USE PARALLEL APPROACH WITH THIS BOWL COMBINATION



INSTALLATION ABOVE HAWS 1311

- NOTES:
- HEIGHT DIMENSIONS SHOWN ARE FOR CHILD ADA APPLICATIONS:  
- BOTTLE FILLER HEIGHT AT 40" MAX.  
- DRINKING FOUNTAIN BUBBLER HEIGHT AT 30" MAX.  
(SEE SHEETS 3, 4 & 5 FOR ADULT ADA HEIGHT DIMENSIONS)
  - SEE SEPARATE INSTALLATION DRAWINGS FOR MOUNTING PLATES AND BACK PANELS (SHOWN FOR REFERENCE - NOT SUPPLIED).
  - WHEN INSTALLING THIS UNIT, LOCAL, STATE OR FEDERAL CODES SHOULD BE ADHERED TO FOR INSTALLATION LOCATIONS, WASTE & SUPPLY REQUIREMENTS OTHER THAN SHOWN.


**Haws**  
Since 1906

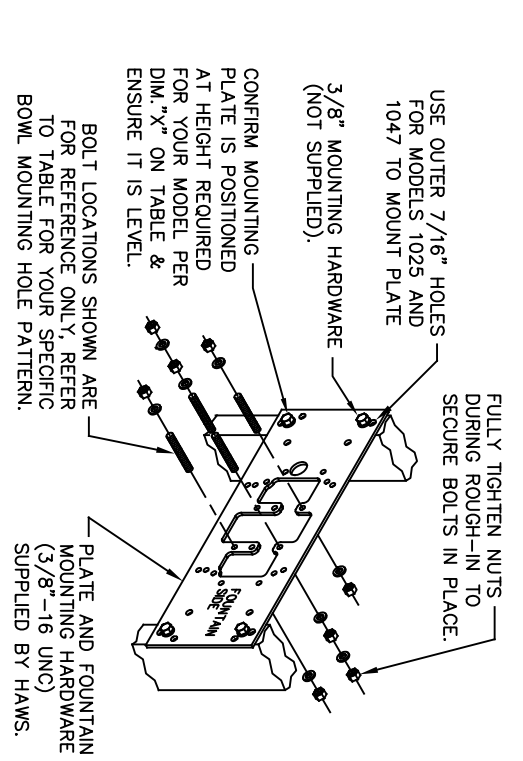
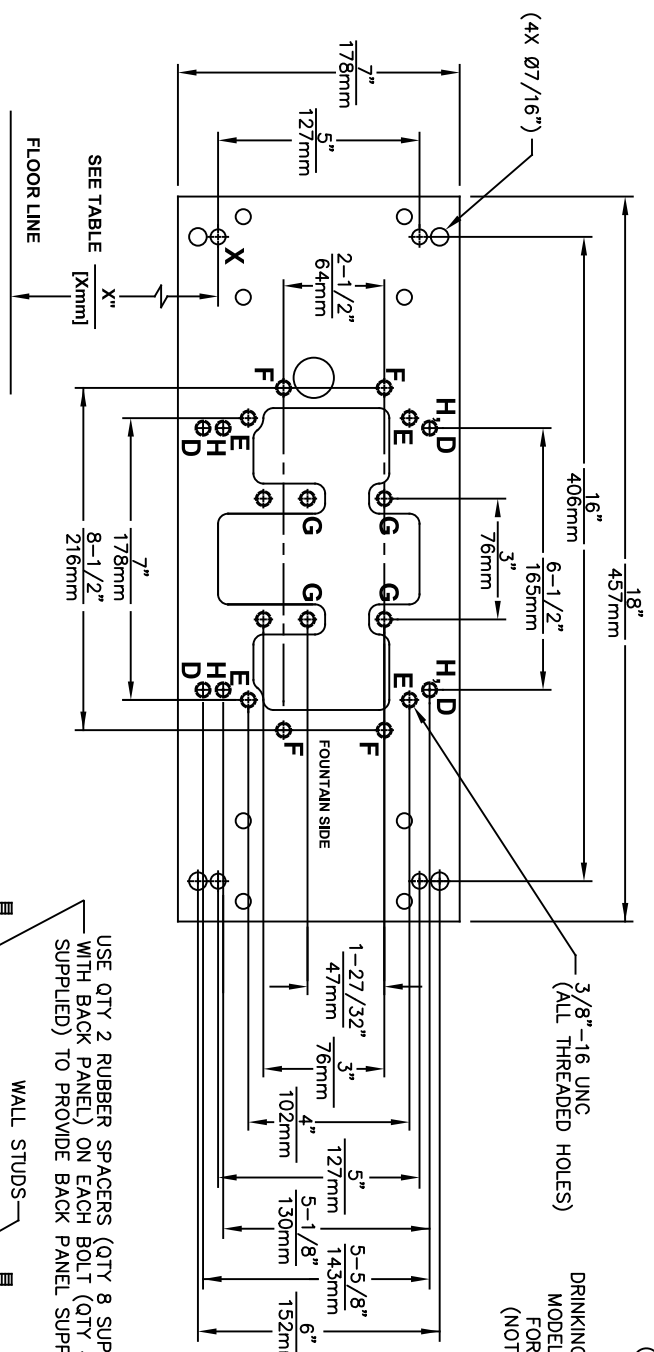
1455 KLEPPLE PLANE  
SPARKS, NEVADA 89431  
(775) 359-4712 FAX (775) 359-4224  
E-MAIL: HAWS@HAWSCO.COM  
WEBSITE: WWW.HAWSCO.COM

ECON. REVISED PERBY:		MODEL(S)	
5744	ECON. 6136	1920HO/1920HPSHO/1920WHO	
DATE:	CHK'D:	SCALE:	DRAWING TYPE:
02/26/24	KM	1/16"=1"	INSTALLATION
APPROVED:	DATE:	SIZE:	SHEET:
FV	1/16/24	A1	8 OF 8
PART NUMBER		REVISION	
0510001063.D		8	

**6700 INDEX**

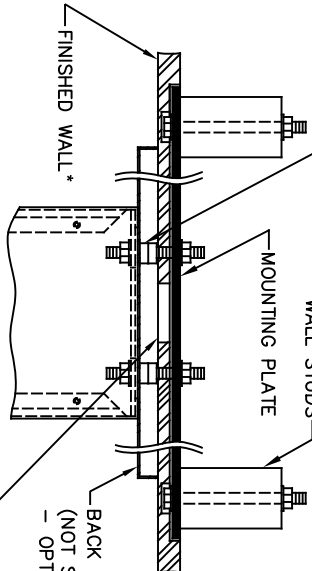
<p>INSTALLATION WITH:</p>	<p>TYPICAL USES</p>	<p>SEE SHEET...</p>
<p>GENERAL INSTALLATION</p>		<p>IMPORTANT INFORMATION FOR ALL INSTALLATIONS</p>
<p>1001 BOWLS</p>	<p>HAWS SERIES 1001X, 1001.8X</p>	<p>3 OF 6</p>
<p>1107 BOWLS</p>	<p>HAWS SERIES 1107X, 1107.8X</p>	<p>3 OF 6</p>
<p>1109 BOWLS</p>	<p>HAWS SERIES 1109X, 1109.8X</p>	<p>3 OF 6</p>
<p>1047 BOWLS</p>	<p>HAWS SERIES 1047</p>	<p>4 OF 6</p>
<p>1011 BOWLS</p>	<p>HAWS SERIES 1011X, 1011.8X</p>	<p>4 OF 6</p>
<p>1119 BOWLS</p>	<p>HAWS SERIES 1119X, 1119.8X</p>	<p>4 OF 6</p>
<p>1117 BOWLS</p>	<p>HAWS SERIES 1117X, 1117.8X</p>	<p>5 OF 6</p>
<p>1311 BOWLS</p>	<p>HAWS SERIES 1311</p>	<p>5 OF 6</p>
<p>1501 BOWLS</p>	<p>HAWS SERIES 1501</p>	<p>5 OF 6</p>
<p>CHILD HEIGHT</p>	<p>HAWS 1107PCH, 1109PCH, 1311PCH</p>	<p>6 OF 6</p>

 <p><b>Haws</b> Since 1906</p>		<p>1455 KLEPPE LANE SPARKS, NEVADA 89431 (775) 359-4712 FAX (775) 359-7424 E-MAIL: HAWS@HAWSCO.COM WEBSITE: WWW.HAWSCO.COM</p>	
ECN NO. REVISED PER BY:	MODEL(S)	SCALE	DRAWING TYPE
ECN: 6148		N/A	
DATE: 10/03/24	67/00		
CHKD: JG			
DATE: 02/11/25			
CHKD: JG			
DATE: 02/11/25			
APPROVED: FV			
INSTALLATION	SIZE	A	SHEET 1 OF 6
PART NUMBER	0002080016		
REVISION	26		



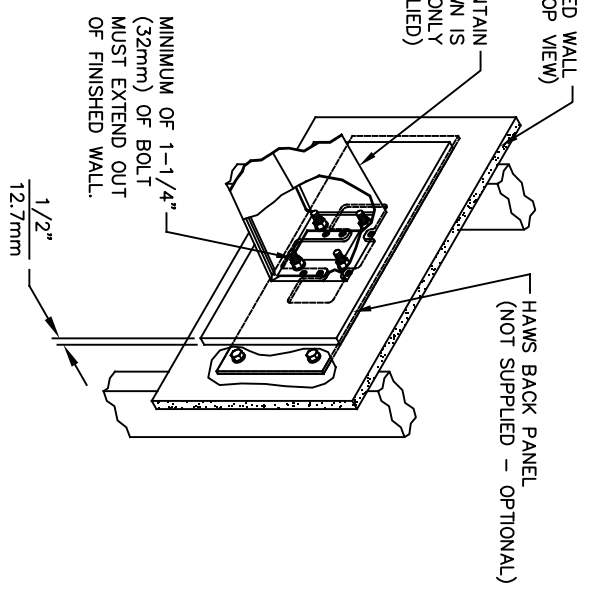
**CAUTION**

REGARDING CONCRETE/MASONRY WALL MOUNTING: DO NOT SECURE MOUNTING PLATE TO SAME SIDE OF WALL AS FOUNTAIN. AVOID COMPROMISING INTEGRITY OF WALL WHEN ANCHORING FOUNTAIN. IT IS RECOMMENDED THAT INSTALLER CALL TECHNICAL SUPPORT IF THERE ARE ANY QUESTIONS AS TO HOW TO OBTAIN A PROPER ANCHOR IN CONCRETE/MASONRY WALLS. 1-800-766-5612



**TOP VIEW**

6700 MOUNTING PLATE  
FOR USE WITH  
DRINKING FOUNTAINS  
AND WASTE DRIP TRAYS  
AT 27" ADULT HEIGHT  
(SEE SHEETS 2 - 5 FOR USE WITH  
BOTTLE FILLER 1920/1920HO SERIES  
AND CHILD HEIGHT APPLICATIONS)



MODEL	USE BOWL MTG. HOLE PATTERN	USE "X" DIM. BELOW TO POSITION MOUNTING PLATE HOLE "X"
1001	"G"	25-3/8" [645mm]
1025	"D"	28-1/8" [714mm]
1047	"E"	24-3/8" [619mm]
1105	"H"	34-5/16" [872mm]
1107	"F"	26-3/16" [665mm]
1109	"H"	27-5/16" [694mm]
1109.14	"H"	27-5/16" [694mm]
1109FR	"H"	27-5/16" [694mm]
1311	"E"	26-3/4" [679mm]

MODEL(S)	WASTE DRIP TRAY (ONLY) AT 27" ADULT HEIGHT
6468	"G" 25-3/8" [645mm]
1922	"G" 25-3/8" [645mm]

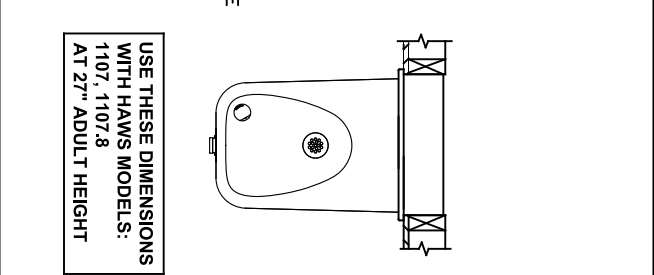
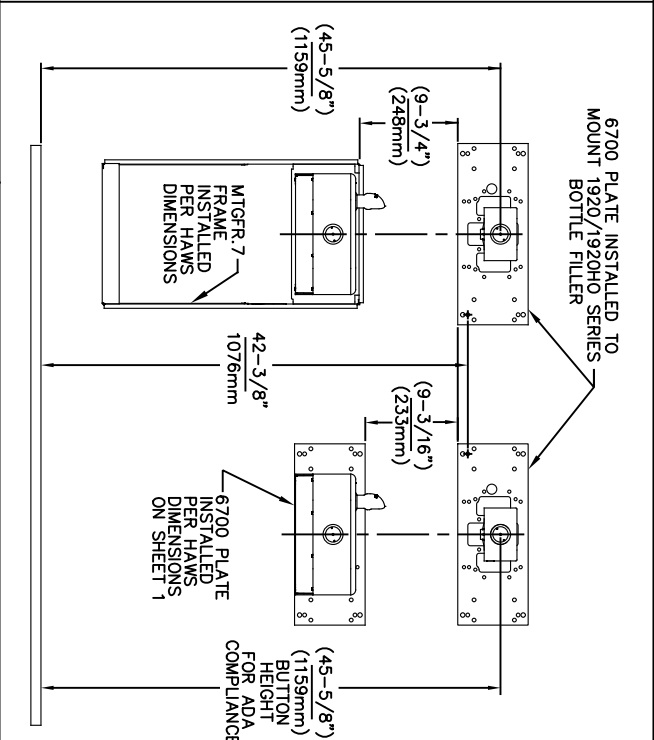
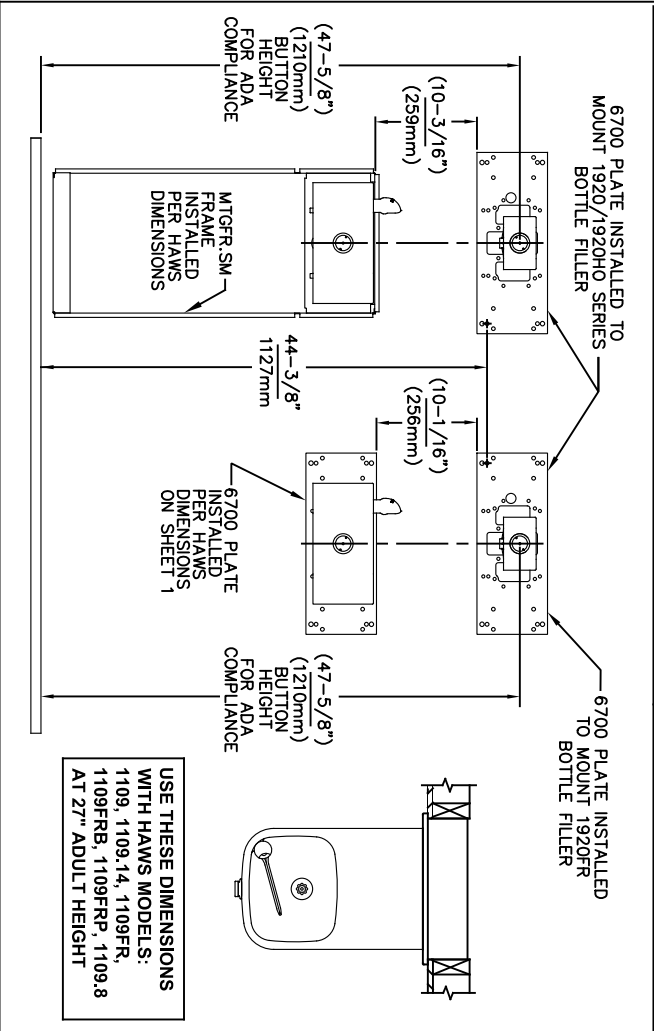
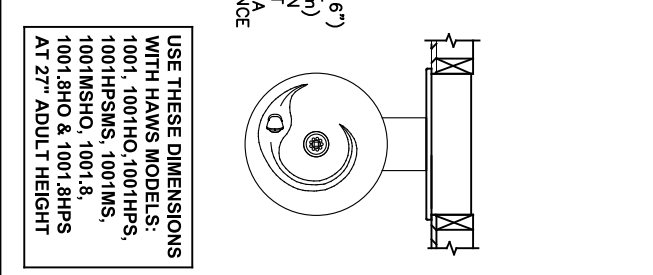
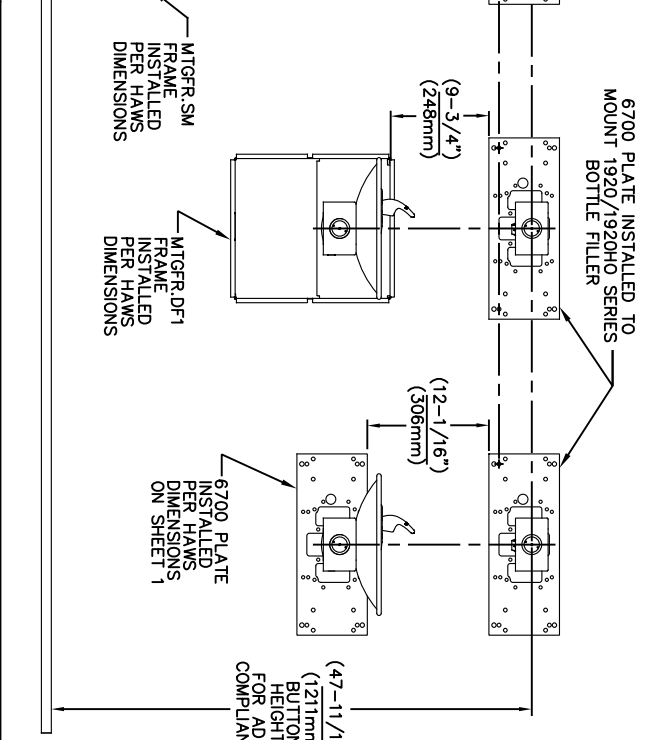
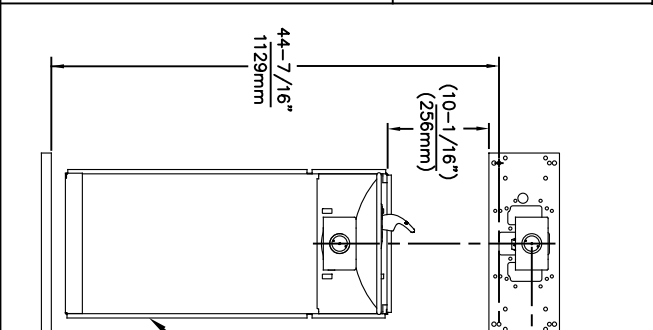
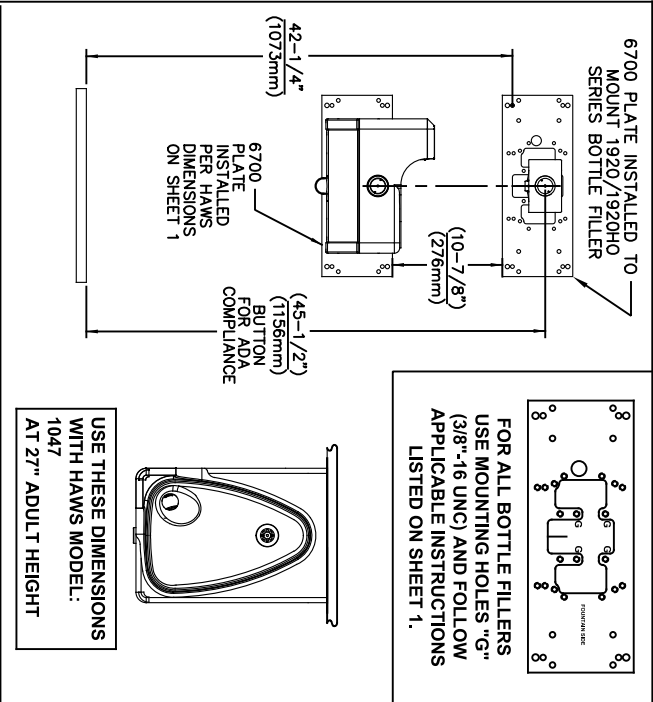
\* FINISH WALL OVER MOUNTING PLATE AND BEHIND BACK PANEL. MAKE SURE THAT FINISHED WALL EXTENDS WITHIN THE BRACKET/BOWL MOUNTING HOLES (TO PROVIDE SURFACE AREA FOR RUBBER SPACERS TO CONTACT).

**Haws**  
Since 1906

1455 KLEPPE LANE  
SPARKS, NEVADA 89431  
(775) 369-4712 FAX (775) 359-7424  
E-MAIL: HAWS@HAWS.CO.COM  
WEBSITE: WWW.HAWS.CO.COM

ECN NO. REVISED PER BY:	MODEL(S)
ECN: 6148 JG	6700
DATE: CHKD:	
09/20/23 JG	
APPROVED: FV	DATE: 02/11/25
SCALE: N/A	DRAWING TYPE: INSTALLATION
SIZE: A	SHEET: 2 OF 6
REVISION: 26	





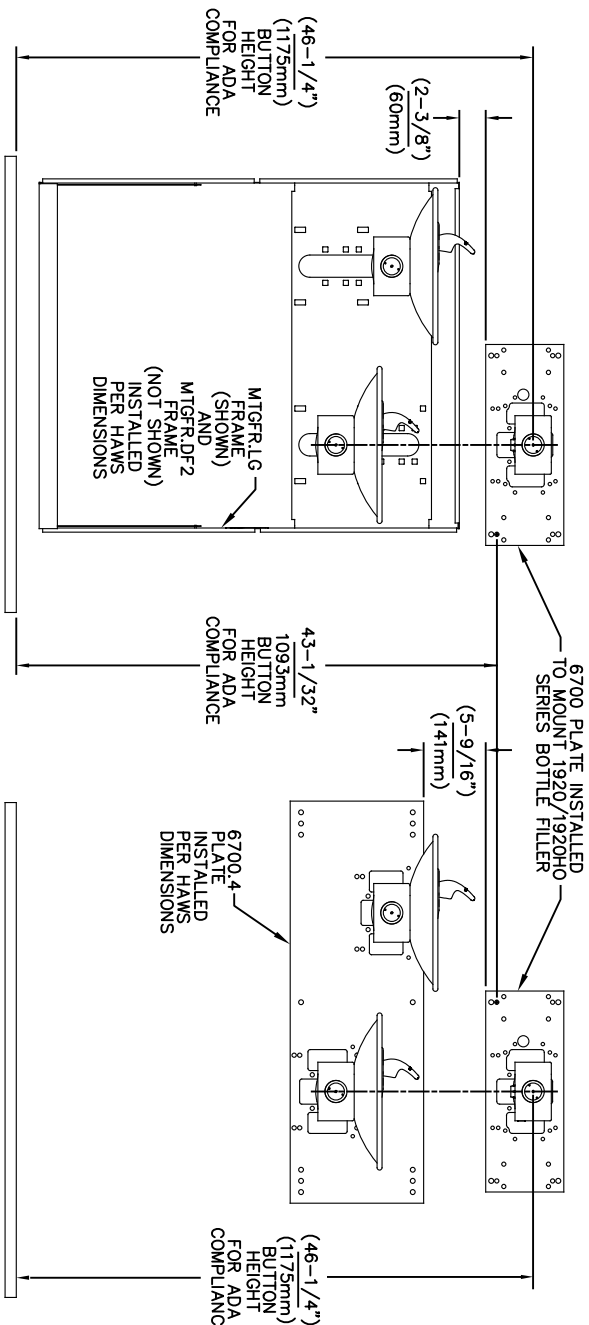
NOTES:  
 1. WHEN INSTALLING THIS UNIT, LOCAL, STATE OR FEDERAL CODES SHOULD BE ADHERED TO.  
 2. BACK PANELS (OPTIONAL) NOT SHOWN FOR CLARITY.

6700 MOUNTING PLATE  
 FOR USE WITH BOTTLE FILLER  
 (SEE SHEET 1 FOR USE WITH  
 DRINKING FOUNTAINS)

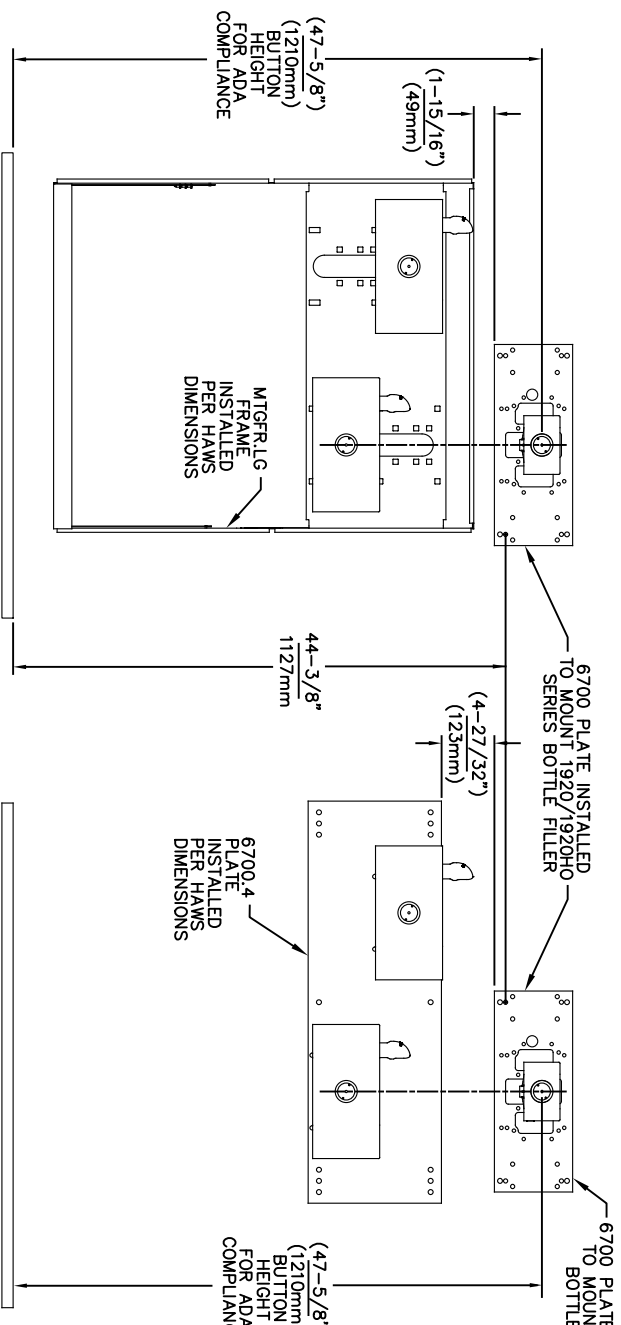
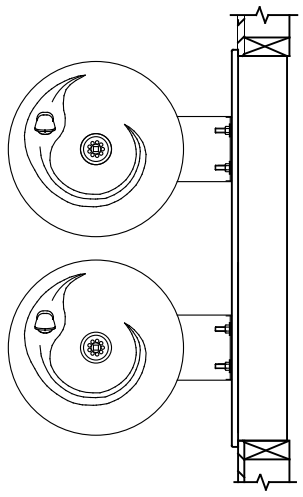
1455 KLEPPE LANE  
 SPARKS, NEVADA 89431  
 (775) 359-4712 FAX (775) 359-7424  
 E-MAIL: HAWS@HAWS.CO.COM  
 WEBSITE: WWW.HAWS.CO.COM

ECN NO. REVISED PER BY:	MODEL(S)
ECN 6148 JG	6700
DATE: 02/09/17	DATE:
CHK'D: JG	SCALE: N/A
APPROVED: EV	DRAWING TYPE: INSTALLATION
DATE: 02/11/25	SIZE: A
	SHEET: 3 OF 6
	REVISION: 26

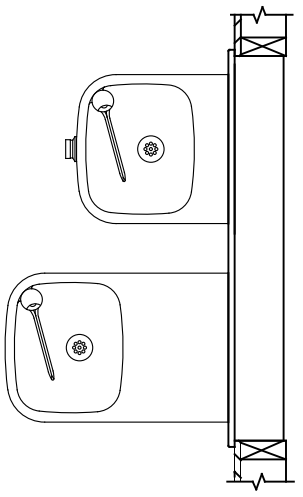
PART NUMBER: 0002080016



**USE THESE MOUNTING DIMENSIONS IF INSTALLING OVER HAWS FOUNTAIN**  
 MODEL: 1011, 1011HO, 1011HO2, 1011HPS, 1011HPSHO, 1011HPSHO2, 1011HPSMS, 1011MS, 1011MSHO, 1011MSHO2, 1011.8, 1011.8HO, 1011.8HO2 & 1011.8HPSMS AT 27" ADULT HEIGHT  
 INSTALL THE 6700 ABOVE THE FOUNTAIN MOUNTING PLATE OR FRAME AT THE DIMENSION SHOWN FOR CORRECT BACKPANEL SPACING  
**BACK PANELS FOR BOTTLE FILLERS (NOT SUPPLIED - OPTIONAL) ARE NOT SHOWN FOR CLARITY.**



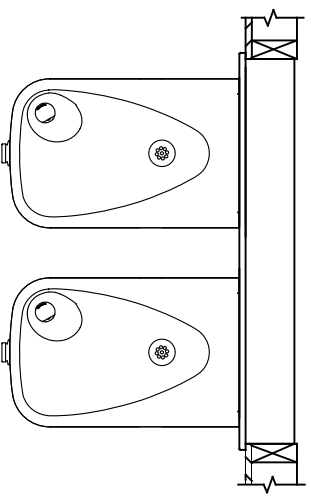
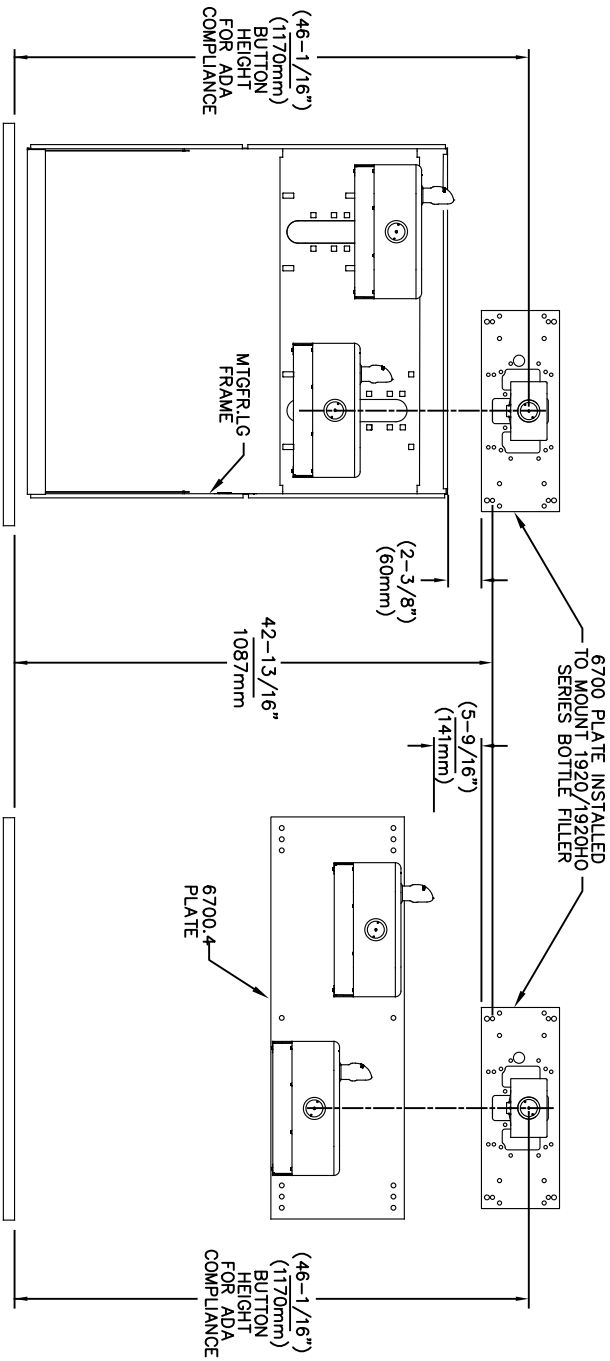
**USE THESE MOUNTING DIMENSIONS IF INSTALLING OVER HAWS FOUNTAIN**  
 MODEL: 1119, 1119.14, 1119.14HO, 1119.14HO2, 1119FR, 1119FRB, 1119FRP, 1119HO, 1119HO2 & 1119.8 AT 27" ADULT HEIGHT  
 INSTALL THE 6700 ABOVE THE FOUNTAIN MOUNTING PLATE OR FRAME AT THE DIMENSION SHOWN FOR CORRECT BACKPANEL SPACING  
**BACK PANELS FOR BOTTLE FILLERS (NOT SUPPLIED - OPTIONAL) ARE NOT SHOWN FOR CLARITY.**



- NOTES:
- WHEN INSTALLING THIS UNIT, LOCAL, STATE OR FEDERAL CODES SHOULD BE ADHERED TO.
  - BACK PANELS (OPTIONAL) NOT SHOWN FOR CLARITY.

6700 MOUNTING PLATE  
 FOR USE WITH BOTTLE FILLER  
 (SEE SHEET 1 FOR USE WITH  
 DRINKING FOUNTAINS)

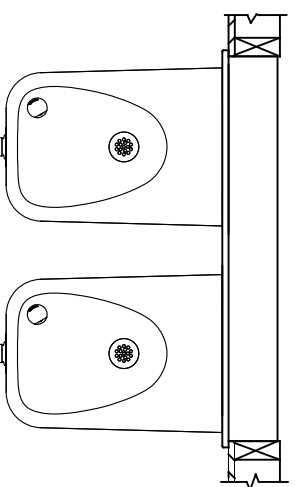
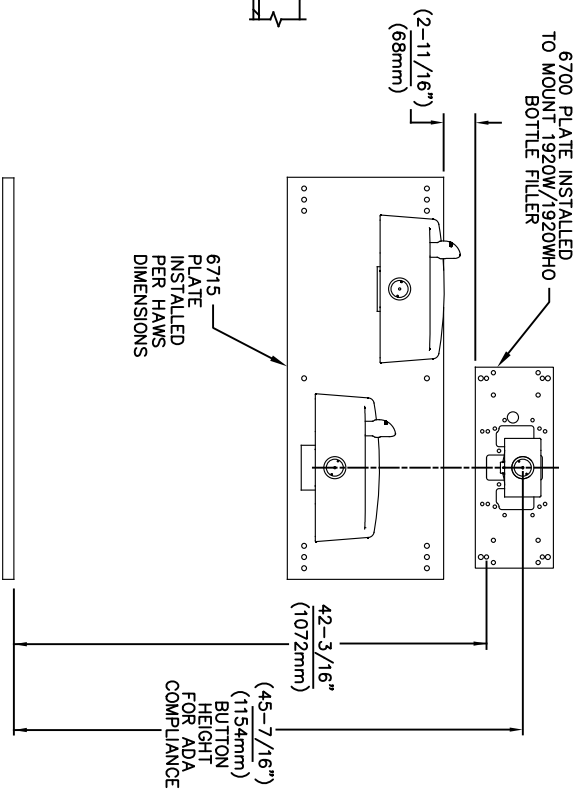
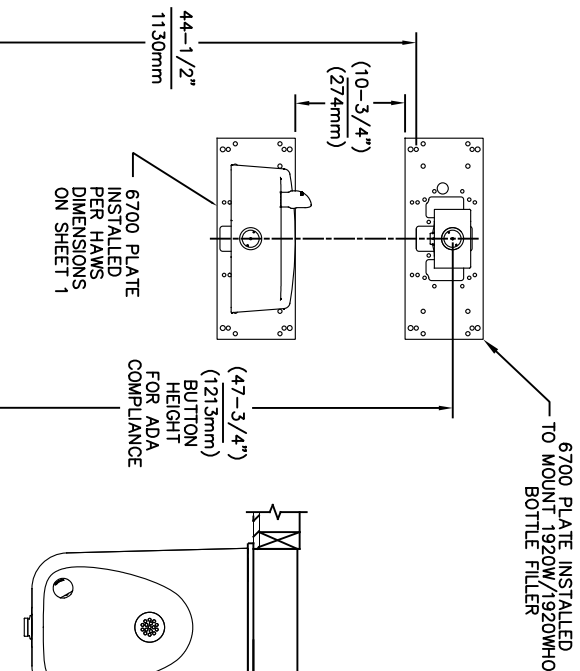
		MODEL(S)	
6700			
ECN NO. REVISED PER BY:	DATE:	CHKD.:	DATE:
5550	05/14/20	JG	JG
APPROVED:	DATE:	SCALE:	DRAWING TYPE:
FV	02/11/25	1:13	INSTALLATION
1459 KLEPPE LANE		SPARKS, NEVADA 89431	
(775) 359-4712		FAX (775) 359-7424	
E-MAIL: HAWS@HAWS.CO.COM		WEBSITE: WWW.HAWS.CO.COM	
PART NUMBER		REVISION:	
0002080016		26	



USE THESE MOUNTING DIMENSIONS IF INSTALLING OVER HAWS FOUNTAIN MODEL: 1117, 1117.8 AT 27" ADULT HEIGHT

INSTALL THE 6700 ABOVE THE FOUNTAIN MOUNTING PLATE OR FRAME AT THE DIMENSION SHOWN FOR CORRECT BACKPANEL SPACING

BACK PANELS FOR BOTTLE FILLERS (NOT SUPPLIED - OPTIONAL) ARE NOT SHOWN FOR CLARITY.



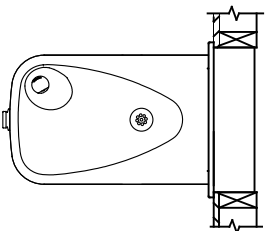
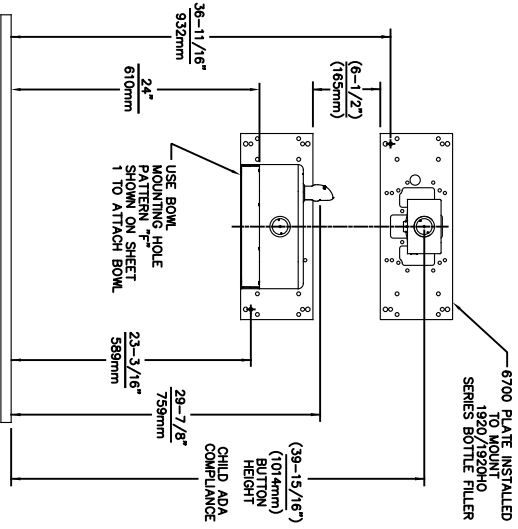
USE THESE MOUNTING DIMENSIONS IF INSTALLING OVER HAWS FOUNTAIN MODEL: 1311, 1501 AT 27" ADULT HEIGHT

INSTALL THE 6700 ABOVE THE FOUNTAIN MOUNTING PLATE AT THE DIMENSION SHOWN FOR CORRECT BACKPANEL SPACING (IF APPLICABLE). BACK PANEL FOR BOTTLE FILLER (NOT SUPPLIED - OPTIONAL) IS NOT SHOWN FOR CLARITY.

NOTES:  
1. WHEN INSTALLING THIS UNIT, LOCAL, STATE OR FEDERAL CODES SHOULD BE ADHERED TO.  
2. BACK PANELS (OPTIONAL) NOT SHOWN FOR CLARITY.

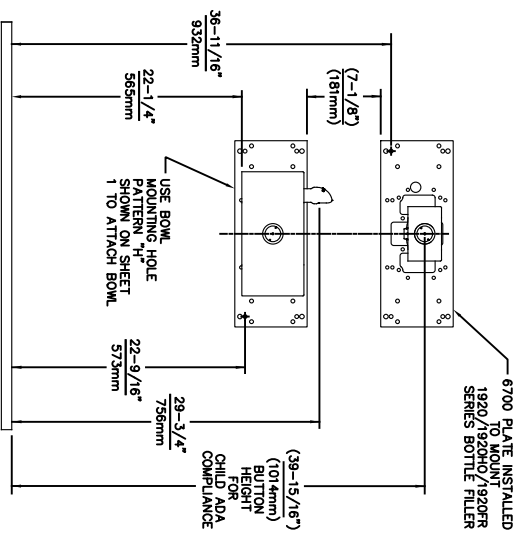
6700 MOUNTING PLATE FOR USE WITH BOTTLE FILLER (SEE SHEET 1 FOR USE WITH DRINKING FOUNTAINS)

		1459 KLEPPE LANE SPARKS, NEVADA, 89431 (775) 359-4712 FAX (775) 359-7424 E-MAIL: HAWS@HAWS.CO.COM WEBSITE: WWW.HAWS.CO.COM	
ECN NO. REVISED PER BY:	MODEL(S)	PART NUMBER	
5550	6700	0002080016	
DATE: 05/14/20	DATE: JG	REVISION:	26
APPROVED: FV	SCALE: 1:13	DRAWING TYPE:	INSTALLATION
DATE: 02/11/25	SIZE: A	SHEET: 5	OF: 6

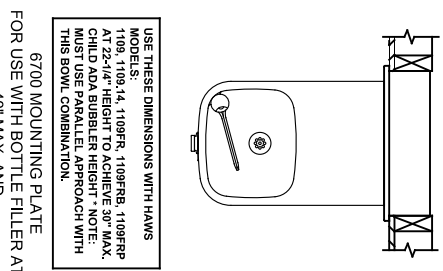


USE THESE DIMENSIONS WITH HAWS MODEL 1107PCH AT 24\"/>

6700 MOUNTING PLATE FOR USE WITH BOTTLE FILLER AT 40\"/>

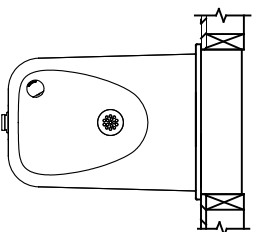
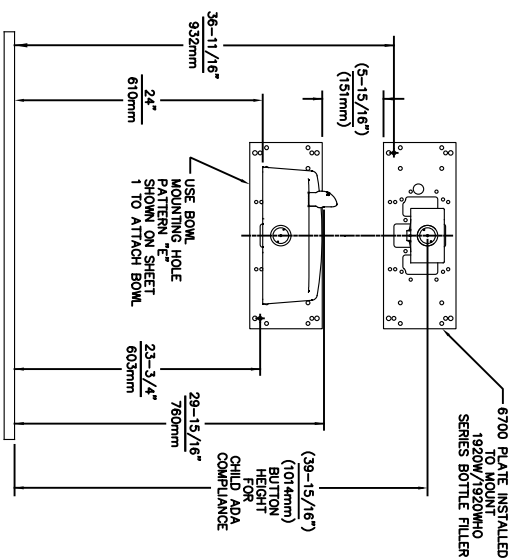


6700 PLATE INSTALLED TO MOUNT 1920/1920R SERIES BOTTLE FILLER



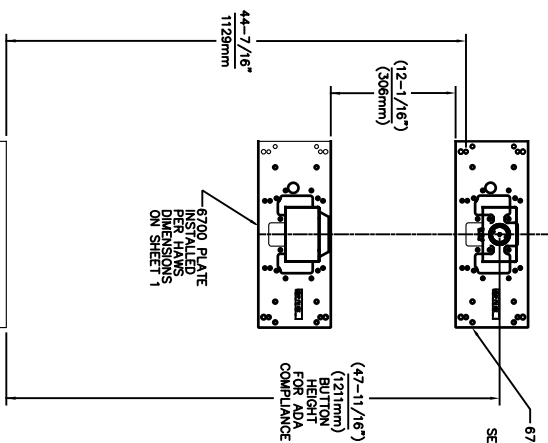
USE THESE DIMENSIONS WITH HAWS MODEL: 1109, 1109.14, 1109FR, 1109FRB, 1109FRP AT 22-1/4\"/>

6700 MOUNTING PLATE FOR USE WITH BOTTLE FILLER AT 40\"/>



USE THESE DIMENSIONS WITH HAWS MODEL 1107PCH AT 24\"/>

6700 MOUNTING PLATE FOR USE WITH BOTTLE FILLER AT 40\"/>




6700 PLATE INSTALLED TO MOUNT 1920/1920HO SERIES BOTTLE FILLER

USE THESE MOUNTING DIMENSIONS IF INSTALLING OVER HAWS WASTE DRIP TRAY. MODEL: 6468 (SHOWN), 1922 (MODEL 1922 INCLUDES 1920 BOTTLE FILLER). THE 1920 BOTTLE FILLER Bp-15 Back Panels (NOT SHOWN), AT 27\"/>

6700 MOUNTING PLATE FOR USE WITH BOTTLE FILLER (SEE SHEET 1 FOR USE WITH DRINKING FOUNTAINS AND WASTE DRIP TRAY)

- NOTES:
- WHEN INSTALLING THIS UNIT, LOCAL, STATE OR FEDERAL CODES SHOULD BE ADHERED TO.
  - ONE PIECE BACK PANELS Bp-15C (FOR USE WITH MODELS 1107L, 1109 SERIES & BOTTLE FILLER) & Bp-15WC (FOR USE WITH MODEL 1311 & BOTTLE FILLER) ARE USED FOR CHILD HEIGHT APPLICATIONS AND ARE OPTIONAL (NOT SHOWN FOR CLARITY).



**Haws**  
Since 1906

1459 KLEPPE LANE  
SPARKS, NEVADA, 89431  
(775) 359-4712 FAX (775) 359-7424  
E-MAIL: HAWS@HAWSCO.COM  
WEBSITE: WWW.HAWSCO.COM

ECN NO. REVISED PER BY:	MODEL(S)
5893 1 ECN: 6148 1 JG	6700
DATE: CHKD:	
07/26/23 JG	
APPROVED: FV	SCALE: 1:13
02/11/25	DRAWING TYPE:
	INSTALLATION:
	SHEET 6 OF 6

PART NUMBER: 0002080016  
REVISION: 26