

FEATURES & BENEFITS

CONSTRUCTION

Rugged ADA accessible 18 gauge Type 304 Stainless Steel swirl design bowl, 14 gauge Type 304 Stainless Steel bracket, and a vandal-resistant bottom plate provides a long lasting unit with added peace of mind.

BOTTLE FILLER

Vandal-resistant, 14-gauge Type 304 stainless steel bottle filler housing with touchless operation and 1 gpm (3.78 L) laminar flow.

VANDAL RESISTANT

The bubbler heads, push buttons, sensor, round bowls, drain strainers and bottom plates are locked in place, discouraging unwanted vandal tampering, and 30-second obstruction time-out to reduce tampering of sensor.

BUBBLER HEADS

Polished chrome-plated brass bubbler heads with integral laminar flow prevents splashing while providing a superior flow pattern. The integral 11/16" dia. basin shank and stainless anti-rotational roll pin add vandal resistant strength. Shielded, angled stream opening provides a steady source of drinking water at .45 gpm.

FOUNTAIN VALVES

Bottle filler incorporates a touchless sensor operated stainless steel solenoid valve controlled by a transformer, and a push-button activated valve which offers the only all stainless-steel valve body that is machined out of solid bar stock and is fully serviceable through the front of the push button assembly offering access to the water control cartridge and integral water supply strainer on the fountain.

MOUNTING

Heavy-duty 16-gauge galvanized steel mounting frame with welded-in heavy-duty 10 gauge mounting plate with pre-punched mounting holes. Further convenience is given to the chiller with the integral fold-out shelf, and an in-wall 3/16" thick steel mounting plate for the bottle filler.

OPTIONS

- Bottle Filler Stand: Model BTL1001, add-on stainless steel stand to place bottle on when 1920 bottle filler is used.
- Fountain Skirt: Model SK3, stainless steel cane touch skirt for installation on high unit in some applications that may need to comply with ADA protruding objects guidelines.
- Copper Push Button: Model PBA6C, flanged push button assembly with antimicrobial copper button.

For more information, visit www.hawsco.com or call (888) 640-4297.



SPECIFICATIONS

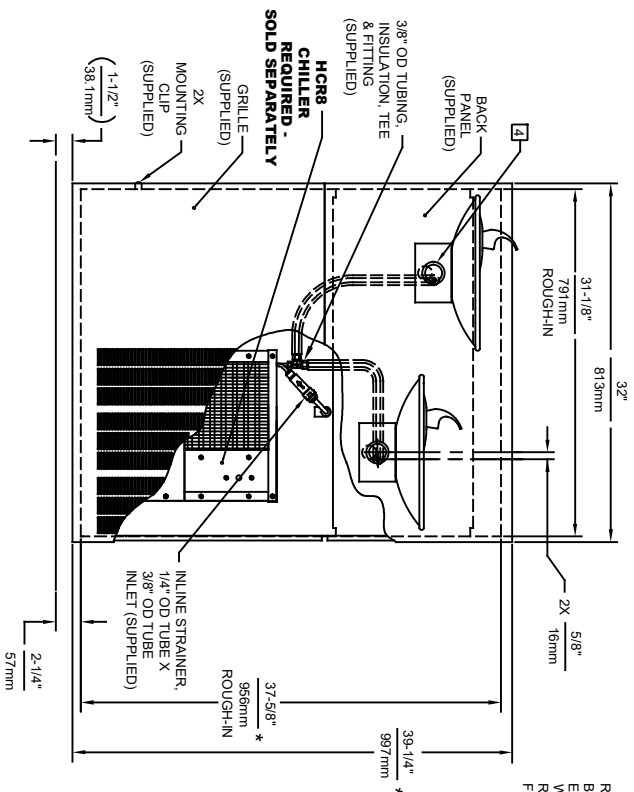
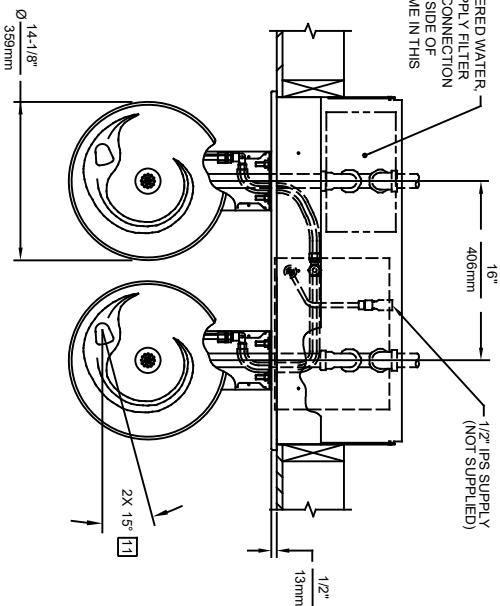
Model 1011.8S ADA vandal-resistant wall-mounted drinking fountain and motion-activated bottle filler shall include dual 18-gauge Type 304 Stainless Steel satin finish basins with integral swirl design, 14 gauge Type 304 Stainless Steel wall brackets and bottle filler bracket, 100% lead-free waterways, sensor operated solenoid valve with 30-second obstruction time-out on the 1 gpm (3.78 L) laminar flow bottle filler which incorporates an in-wall 3/16" thick steel mounting plate, vandal-resistant push-button operated stainless steel valves with front accessible cartridge and flow adjustment on the fountain, polished chrome-plated brass vandal resistant bubbler heads with integral laminar anti-squirt flow, chrome-plated brass vandal-resistant waste strainers, vandal-resistant bottom plates, stainless steel satin finish back panels and louvered intrusion-proof grill, high and low fountain mounting levels, and 1-1/4" O.D. (3.2 cm) waste pipes. The refrigeration system is hermetically sealed and delivers a minimum of 8 gph (30.3 L) of water at 50° F (10° C), 115 Volts, 60Hz, rated watts: 370, full load amps: 5. Haws electric water coolers comply with ARI Standard 1010 and ANSI A117.1, and are listed by Underwriter Laboratories to U.S. and Canadian standards.

APPLICATIONS

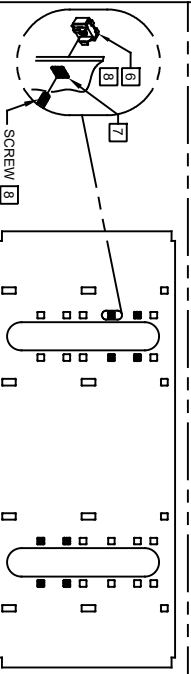
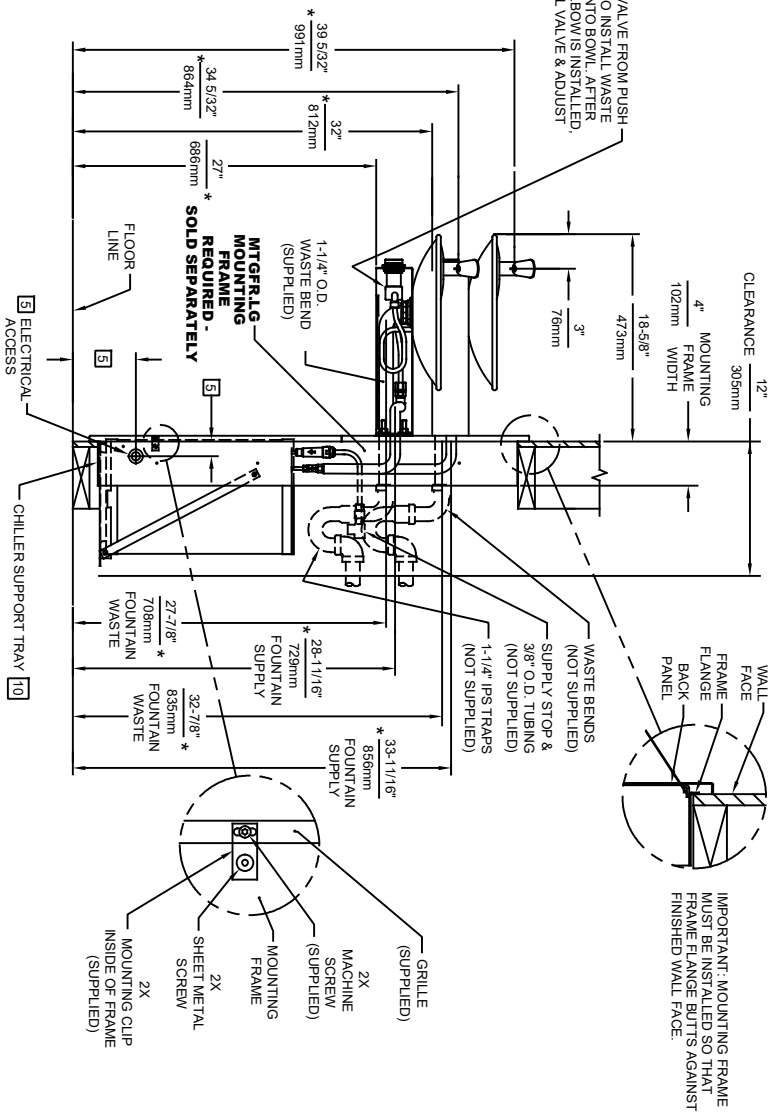
Specifically, this type fountain may be placed in settings such as: schools, office buildings, shopping malls, and other indoor environments where there is a demand for a chilled water source and/or wheelchair access. Electric water coolers are not recommended or designed for outdoor applications or enclosed pool areas (chlorine). These conditions may void warranty. Model meets all current Federal Regulations for the disabled including those in the Americans with Disabilities Act. Haws manufactures drinking fountains, faucets and electric water coolers to be lead-free by all known definitions including NSF/ANSI/CAN 61-Section 9, NSF/ANSI/CAN 372, California Proposition 65, and the Federal Safe Drinking Water Act. Product is compliant to California Health and Safety Code 116875 (AB 1953-2006), and 116876 (AB 100) "NSF/ANSI/CAN 61: Q ≤ 1". Haws electric water coolers comply with ARI Standard 1010 and ANSI A117.1, and are listed by Underwriter Laboratories to U.S. and Canadian standards.



1. HOLD ROUGH-IN DIMENSIONS $\pm 1/8"$ (3 mm).
2. WHEN INSTALLING THIS UNIT, LOCAL, STATE OR FEDERAL CODES SHOULD BE ADHERED TO. FOR DIMENSIONS, (LOCATIONS) WASTE AND SUPPLY REQUIREMENTS OTHER THAN SHOWN, DIMENSIONS MARKED (*) MUST BE ADJUSTED ACCORDINGLY.
3. INSTALLER MUST PROVIDE TRAP FOR PROPER INSTALLATION.
4. REFER TO 8674 SERIES OPERATION AND MAINTENANCE MANUAL FOR PUSH BUTTON AND VALVE INSTALLATION/MAINTENANCE INSTRUCTIONS.
5. REFER TO MGR LG INSTALLATION DRAWING FOR ROUGH-IN DIMENSIONS.
6. INSERT 5/16"-18 PANEL INSERTS FROM OPPOSITE SIDE AT LOCATIONS SHOWN BY DASHED LINES. HOLE COMBINATIONS SHOWN ARE FOR USE WITH LOW FOUNTAIN ON THE RIGHT AND THE HI FOUNTAIN ON THE LEFT. USE OPPOSITE HOLES FOR HI ON RIGHT AND LOW ON LEFT.
7. HOLE COMBINATION SHOWN BELOW IS FOR USE WITH LOW FOUNTAIN ON THE RIGHT AND HIGH FOUNTAIN ON THE LEFT. USE OPPOSITE HOLES FOR HIGH ON RIGHT AND LOW ON LEFT.
8. TO CHANGE FOUNTAIN MTGS. SCREW LOCATIONS, FIRST REMOVE SCREWS AND THEN SQUEEZE CLIPS ON NUT RETAINER TO POP OUT. SNAP INTO NEW POSITIONS AND RE-ASSEMBLE SCREWS
9. IMPORTANT: ALH, LOW (OPTIONAL) CONFIGURATION WILL REQUIRE A DIFFERENT BACK PANEL AND THE WASTE AND SUPPLY DIMENSIONS SHOWN (*) MUST BE REVERSED.
10. ALIGN HOLES IN CHILLER SUPPORT TRAY WITH HOLES IN FRAME AND FASTEN WITH HD SHEET METAL SCREWS.
11. MAXIMUM ADJUSTABLE RANGE IS 15" FROM PARALLEL TO BACK WALL.

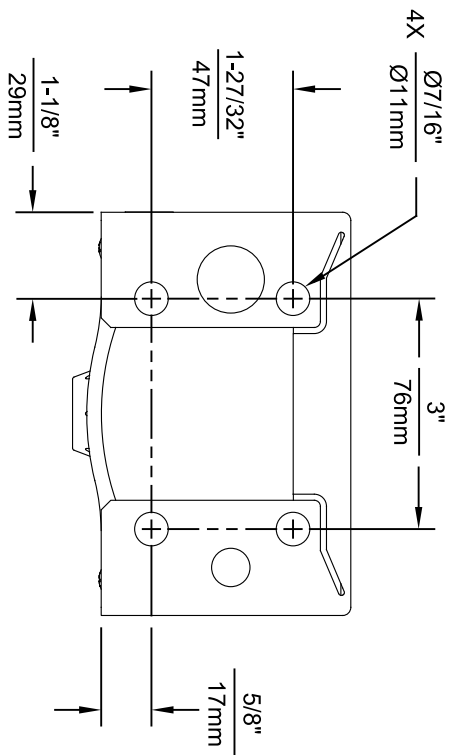
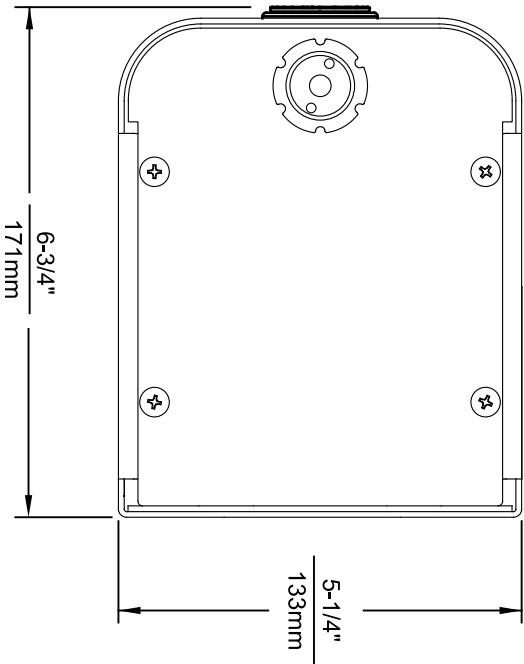
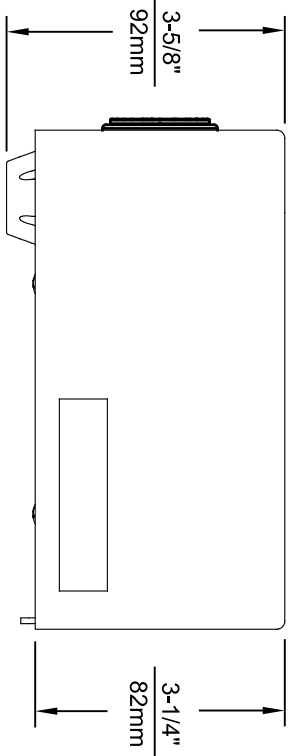


REMOVE VALVE FROM PUSH
BUTTON TO INSTALL WASTE
ELBOW ONTO BOWL. AFTER
WASTE ELBOW IS INSTALLED
REINSTALL VALVE & ADJUST
FLOW

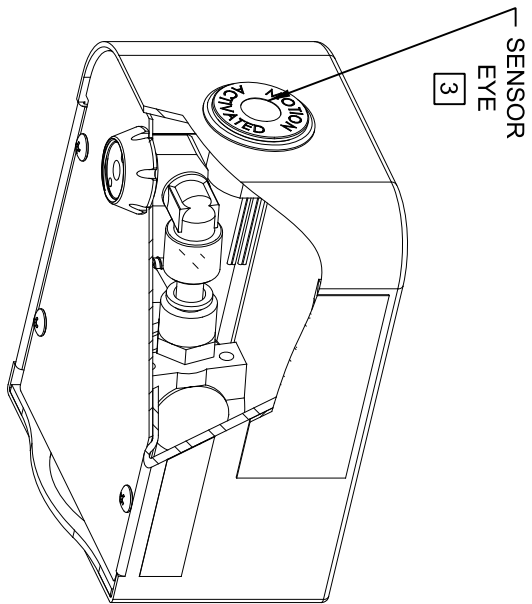


BOWL MOUNTING PATTERN DETAIL

ECONO REVISED PERMAY:		MODEL(S)	
DRAWN:	ECON: 5893	FV	
DATE:	DATE:	CHKD:	
RTM	07/97	KM	
APPROVED:	DATE:		
FV	08/08/23		
SCALE: 1/18	DRAWING TYPE:	INSTALLATION	
SIZE: A	SHEET 1	OF 1	



1920HO SERIES MOUNTING HOLE LOCATIONS
(3/8"-16 UNC MOUNTING HARDWARE NOT SUPPLIED)



NOTES:

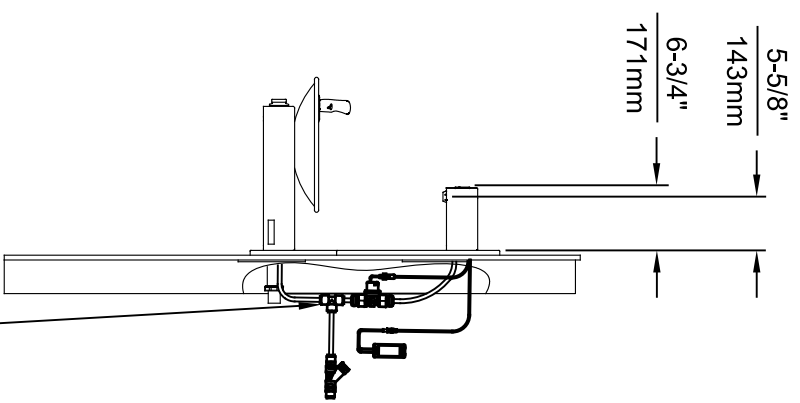
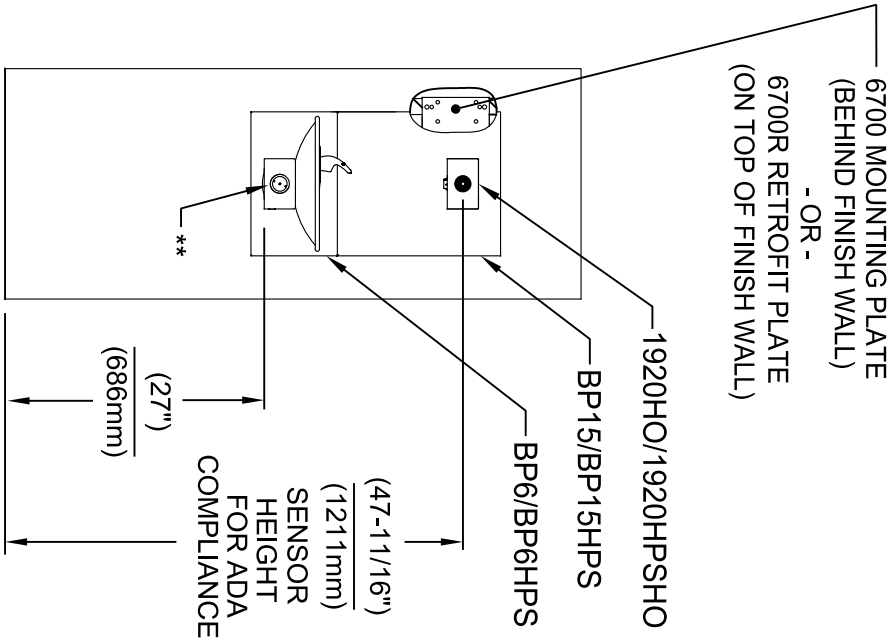
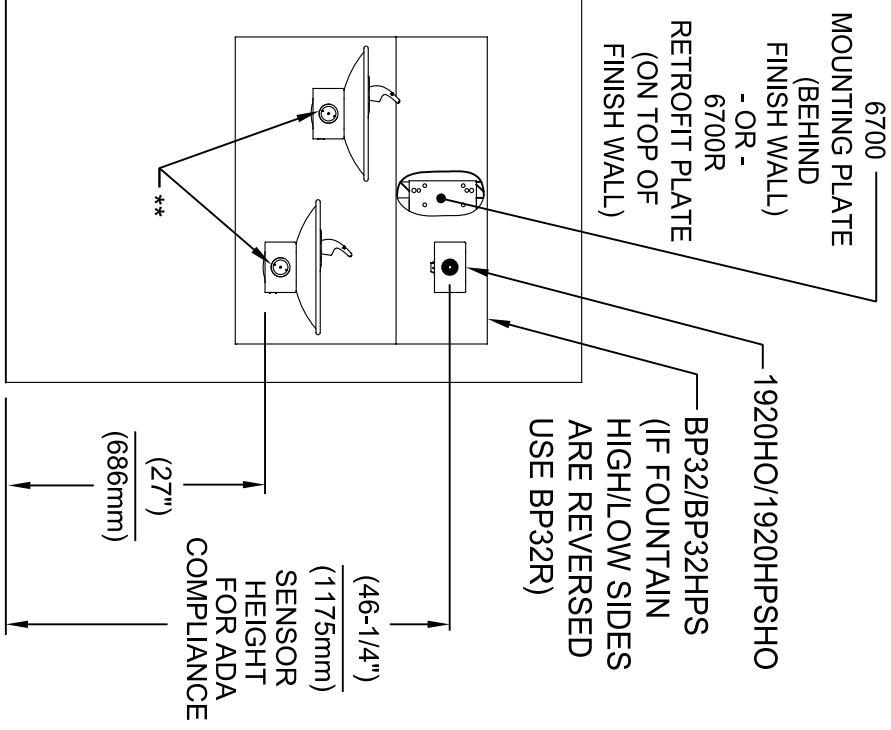
1. SEE SHEETS 2 THRU 7 FOR BOTTLE FILLER ADULT ADA HEIGHT APPLICATIONS AND SHEET 8 FOR CHILD ADA HEIGHT APPLICATIONS.
2. WHEN INSTALLING THIS UNIT, LOCAL, STATE OR FEDERAL CODES SHOULD BE ADHERED TO FOR INSTALLATION LOCATIONS, WASTE AND SUPPLY REQUIREMENTS OTHER THAN SHOWN.
- 3 REFER TO 1RKHO.H OPERATION & MAINTENANCE INSTRUCTIONS FOR SENSOR SETUP.



Haws®
Since 1906

1455 KLEPPLE LANE
SPARKS, NE/VADA 89431
(775) 359-4712 FAX (775) 359-4424
E-MAIL: HAWS@HAWS.CO.COM
WEBSITE: WWW.HAWS.CO.COM

EON NO. REVISED PERBY:		MODEL(S)		INSTALLATION	
5574	EON 6136	FV	1920HO/1920HPSHO/1920WHO	SCALE: N/A	DRAWING TYPE:
DATE:	CHK'D:	DATE:		SIZE: A1	SHEET: 1 OF 8
08/18/20	KAM				
APPROVED:			PART NUMBER		
			0510001063.D		
			REVISION		
			8		

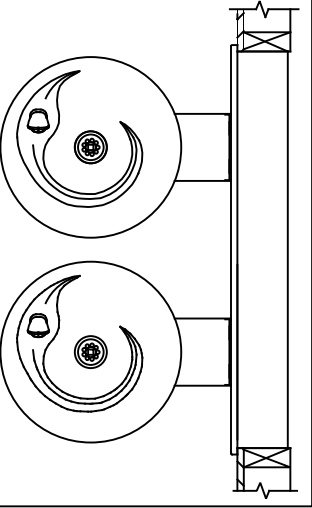


INSTALLATION ABOVE HAWWS 1011 & H1011.8 SERIES

INSTALLATION ABOVE HAWWS 1001 & H1001.8 SERIES


* IF YOUR FOUNTAIN IS THIS STYLE USE THESE DIMENSIONS

1. SEE SEPARATE INSTALLATION DRAWINGS FOR MOUNTING PLATES AND BACK PANELS (SHOWN FOR REFERENCE - NOT SUPPLIED).
2. WHEN INSTALLING THIS UNIT, LOCAL, STATE OR FEDERAL CODES SHOULD BE ADHERED TO FOR INSTALLATION LOCATIONS, WASTE & SUPPLY REQUIREMENTS OTHER THAN SHOWN.



** EXISTING PUSH BUTTON ASSEMBLY SHOWN, CAN BE CONVERTED TO HANDS OFF STYLE, USING RETRO-FIT KIT MODEL 1RKHO.H OR 2RKHO.H DEPENDING ON CUSTOMER REQUIREMENTS.

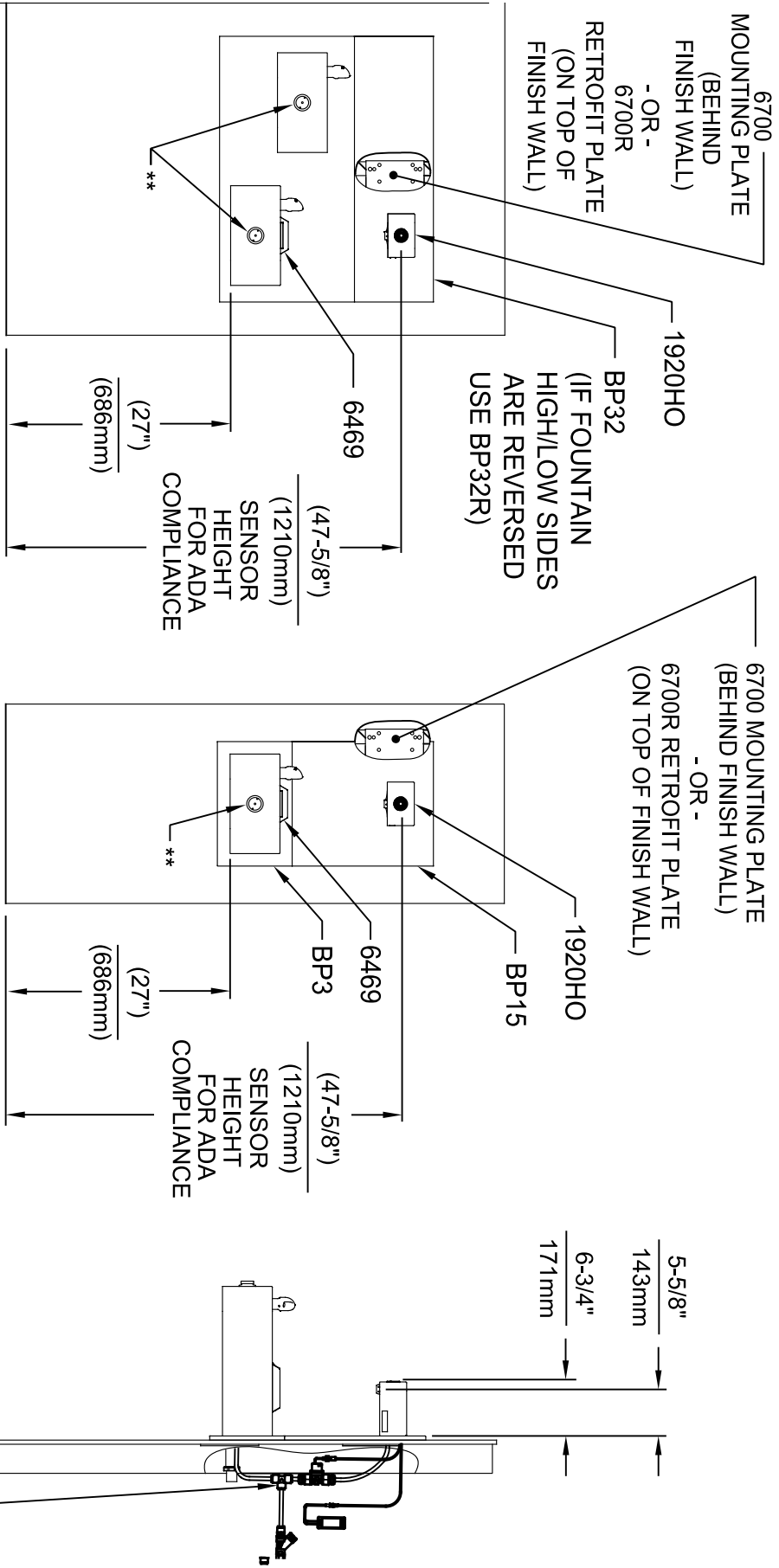
3/8" O.D. SUPPLY TUBING AND 3/8" O.D. PUSH-IN TEE SUPPLIED. (CONNECT TO FOUNTAIN SUPPLY LINE)



Haws®
Since 1906

1455 KLEPPLE LANE
SPARKS, NE/VADA 89431
(775) 359-4712 FAX (775) 359-1424
E-MAIL: HAWS@HAWS.CO.COM
WEBSITE: WWW.HAWS.CO.COM

ECN NO. REVISED PERBY:	MODEL(S)	PART NUMBER
5574 / ECN 6136	1920HO/1920HPSHO/1920WHO	0510001063.D
DRAWN: FV	DATE: 08/18/20	REVISION
APPROVED: FV	DATE: 11/04/24	8
SCALE: N/A	DRAWING TYPE: INSTALLATION	SIZE: A1 SHEET 2 OF 8



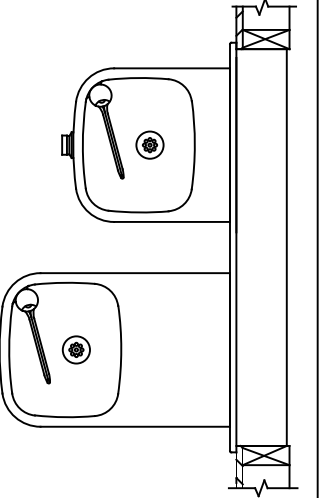
INSTALLATION ABOVE HAWS 1119 & H1119.8 SERIES

**INSTALLATION ABOVE HAWS 1109 & H1109.8 SERIES
SEE SHEET 8 FOR INSTALLATION AT CHILD HEIGHT**

* IF YOUR FOUNTAIN IS THIS STYLE USE
THESE DIMENSIONS

1. SEE SEPARATE INSTALLATION DRAWINGS
FOR MOUNTING PLATES, BACK PANELS
AND DRIP TRAY (NOT SUPPLIED).

2. WHEN INSTALLING THIS UNIT, LOCAL,
STATE OR FEDERAL CODES SHOULD
BE ADHERED TO FOR INSTALLATION
LOCATIONS, WASTE & SUPPLY
REQUIREMENTS OTHER THAN SHOWN.

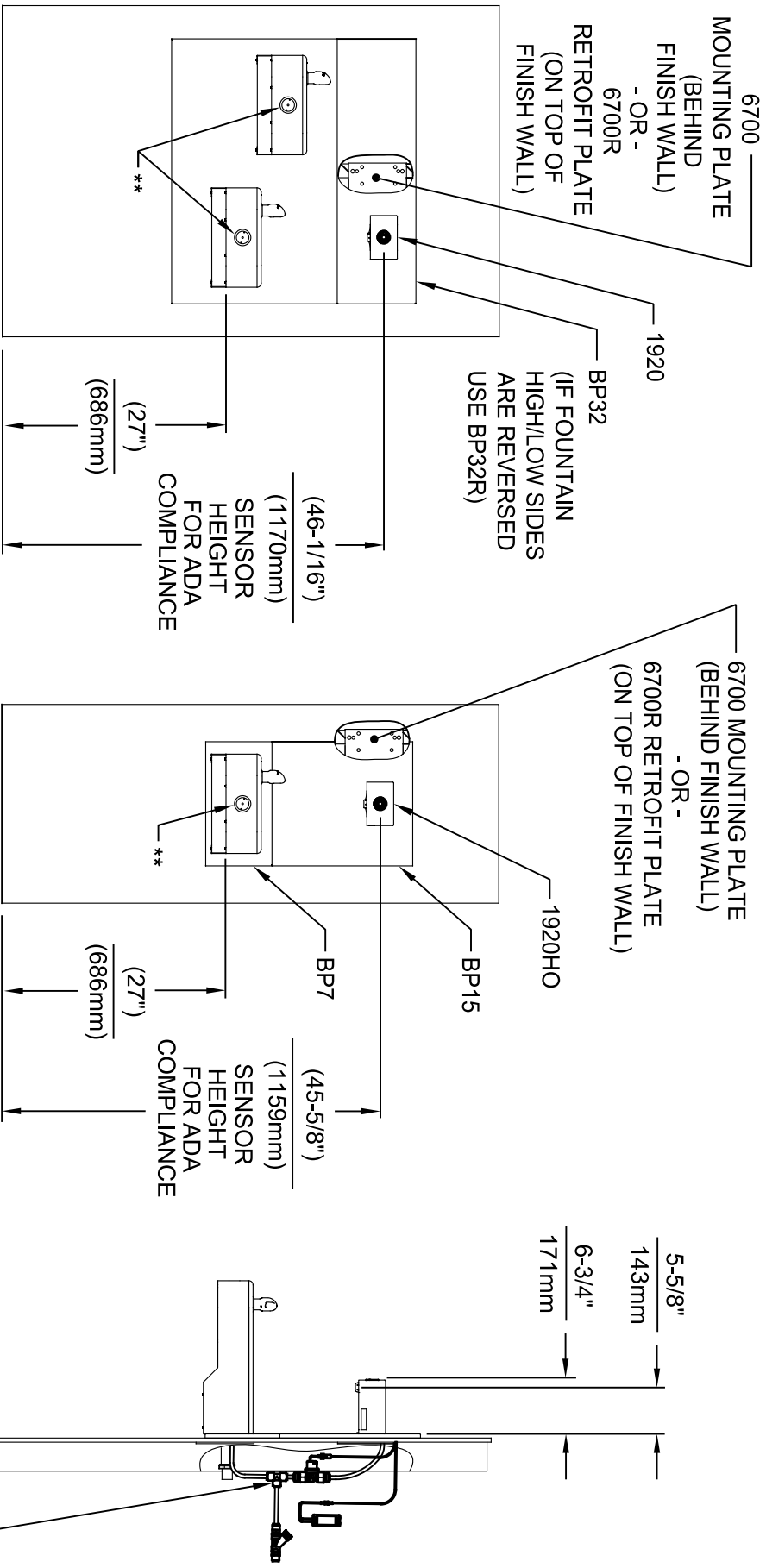


** EXISTING PUSH BUTTON
ASSEMBLY SHOWN, CAN
BE CONVERTED TO HANDS
OFF STYLE, USING RETRO-
FIT KIT MODEL 1RKHO.H OR
2RKHO.H DEPENDING ON
CUSTOMER REQUIREMENTS.

3/8" O.D. SUPPLY
TUBING AND 3/8" O.D.
PUSH-IN TEE SUPPLIED.
(CONNECT TO FOUNTAIN
SUPPLY LINE)



ECON NO. REVISED PERBY:		MODEL(S)		1455 KLEPPPELANE	
5574	ECON 6136	FV		1920HO/1920HPSHO/1920WHO	
DRAWN:	DATE:	CHKD:			
FV	08/18/20	KAM			
APPROVED:	DATE:	SCALE:	N/A	DRAWING TYPE:	INSTALLATION
FV	11/04/24				SIZE: A1 SHEET: 3 OF 8
SPARKS, NE/VADA 89431		PART NUMBER		0510001063.D	
(775) 359-4712 FAX (775) 359-1424		E-MAIL: HAWS@HAWS.CO.COM		REVISION	
E-MAIL: HAWS@HAWS.CO.COM		WEBSITE: WWW.HAWS.CO.COM		8	



INSTALLATION ABOVE HAWS 1117L & H1117.8 SERIES

INSTALLATION ABOVE HAWS 1107L & H1107.8 SERIES

SEE SHEET 8 FOR INSTALLATION AT CHILD HEIGHT

* IF YOUR FOUNTAIN IS THIS STYLE USE THESE DIMENSIONS

1. SEE SEPARATE INSTALLATION DRAWINGS FOR MOUNTING PLATES AND BACK PANELS (SHOWN FOR REFERENCE - NOT SUPPLIED).
2. WHEN INSTALLING THIS UNIT, LOCAL, STATE OR FEDERAL CODES SHOULD BE ADHERED TO FOR INSTALLATION LOCATIONS, WASTE & SUPPLY REQUIREMENTS OTHER THAN SHOWN.



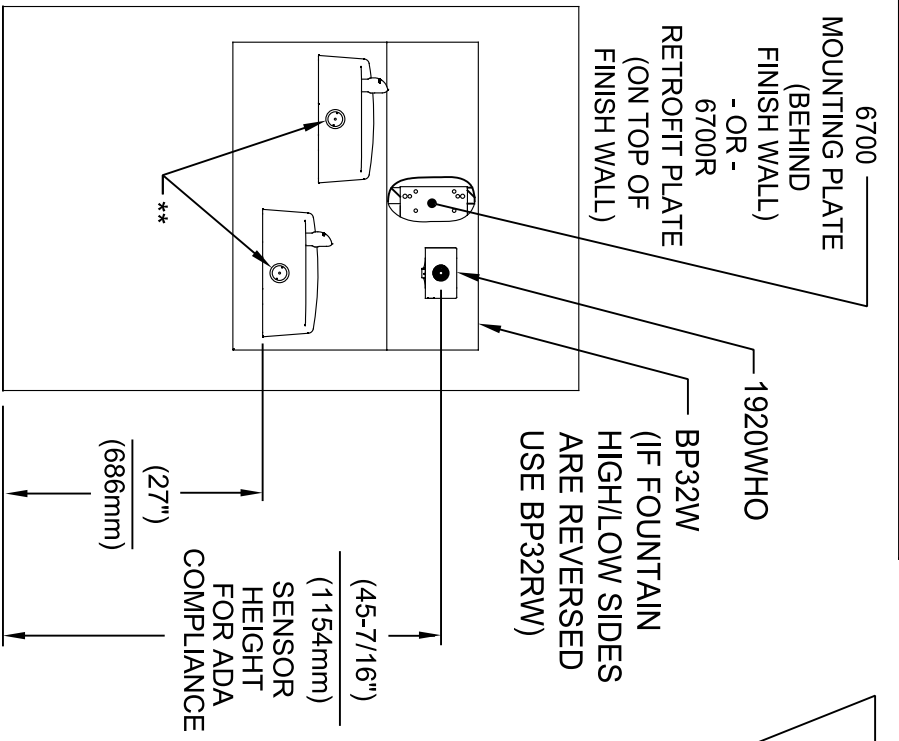
** EXISTING PUSH BUTTON ASSEMBLY SHOWN, CAN BE CONVERTED TO HANDS OFF STYLE, USING RETRO-FIT KIT MODEL 1RKHO.H OR 2RKHO.H DEPENDING ON CUSTOMER REQUIREMENTS.



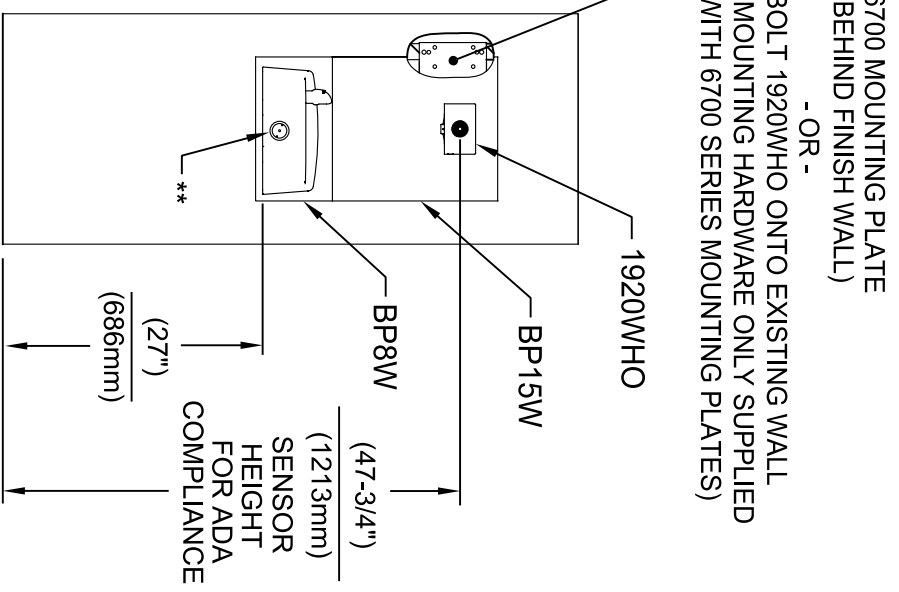
ECON NO. REVISED PERBY:		MODEL(S)		SCALE: N/A		DRAWING TYPE:		INSTALLATION	
5574	ECON 6136	FV	1920HO/1920HPSHO/1920WHO	1/16" & 2/32"	1/16" & 2/32"	1/16" & 2/32"	1/16" & 2/32"	1/16" & 2/32"	1/16" & 2/32"
DRAWN: FV		DATE: 08/18/20		CHECKED: KAM		DATE: 11/04/24		SIZE: A1	
APPROVED: FV		DATE: 11/04/24		SCALE: N/A		DRAWING TYPE:		SHEET: 4 OF 8	
PART NUMBER		0510001063.D		REVISION		8			

1455 KLEPPLE LANE
SPARKS, NEVADA 89431
(775) 359-4712 FAX (775) 359-1424
E-MAIL: HAWS@HAWS.CO.COM
WEBSITE: WWW.HAWS.CO.COM

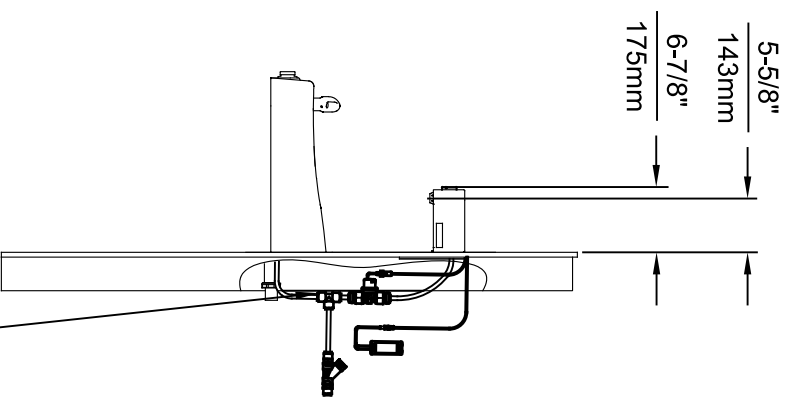
Since 1906



INSTALLATION ABOVE HAWS 1501

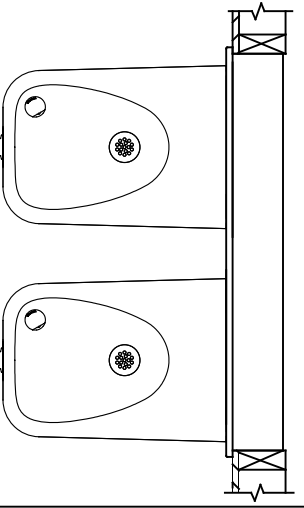


INSTALLATION ABOVE HAWS 1311
SEE SHEET 8 FOR INSTALLATION AT CHILD HEIGHT



* IF YOUR FOUNTAIN IS THIS STYLE USE THESE DIMENSIONS

1. SEE SEPARATE INSTALLATION DRAWINGS FOR MOUNTING PLATES AND BACK PANELS (SHOWN FOR REFERENCE - NOT SUPPLIED).
2. WHEN INSTALLING THIS UNIT, LOCAL, STATE OR FEDERAL CODES SHOULD BE ADHERED TO FOR INSTALLATION LOCATIONS, WASTE & SUPPLY REQUIREMENTS OTHER THAN SHOWN.



** EXISTING PUSH BUTTON ASSEMBLY SHOWN, CAN BE CONVERTED TO HANDS OFF STYLE, USING RETRO-FIT KIT MODEL 1RKHO.H OR 2RKHO.H DEPENDING ON CUSTOMER REQUIREMENTS.

3/8" O.D. SUPPLY TUBING AND 3/8" O.D. PUSH-IN TEE SUPPLIED. (CONNECT TO FOUNTAIN SUPPLY LINE)

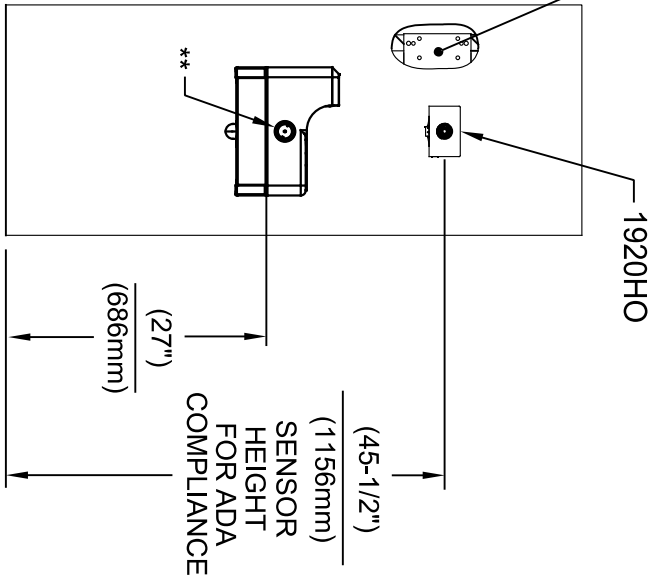


HAWS
Since 1906

1455 KLEPPER LANE
SPARKS, NEVADA 89431
(775) 359-4712 FAX (775) 359-1424
E-MAIL: HAWS@HAWSCO.COM
WEBSITE: WWW.HAWSCO.COM

ECN NO. REVISED PERBY:	MODEL(S)	PART NUMBER
5574 ECN 6136	1920HO/1920HPSHO/1920WHO	0510001063.D
DRAWN: FV	DATE: 08/18/20	REVISION: 8
APPROVED: FV	DATE: 11/04/24	SCALE: N/A
DRAWING TYPE: INSTALLATION		SIZE: A1 SHEET: 5 OF 8

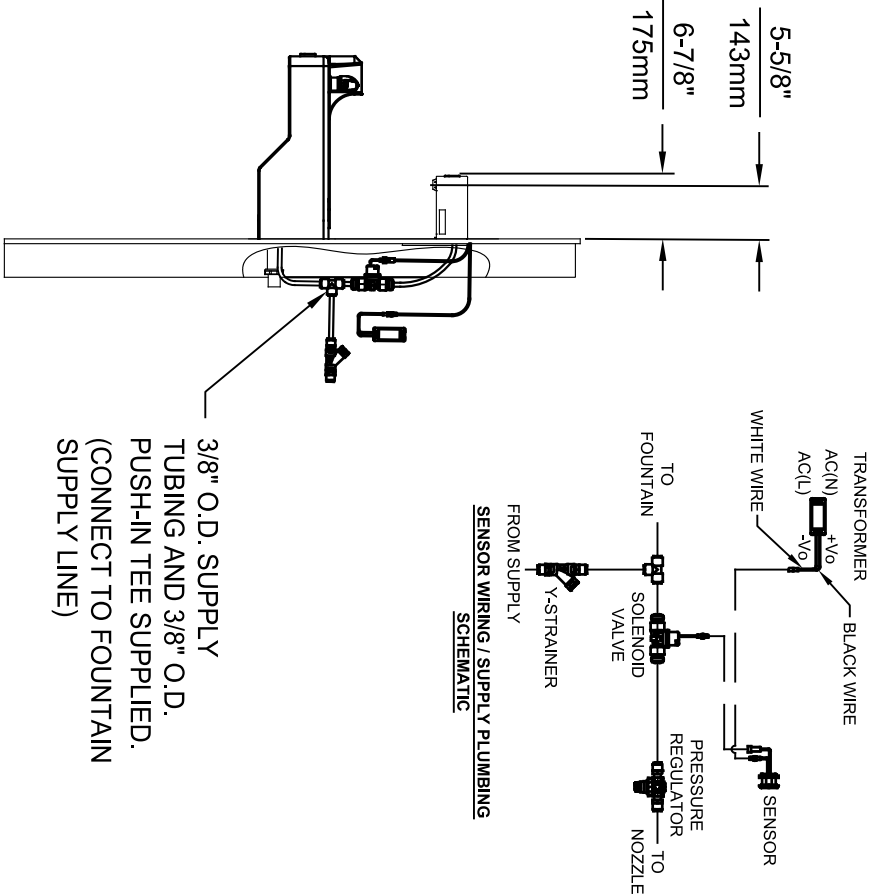
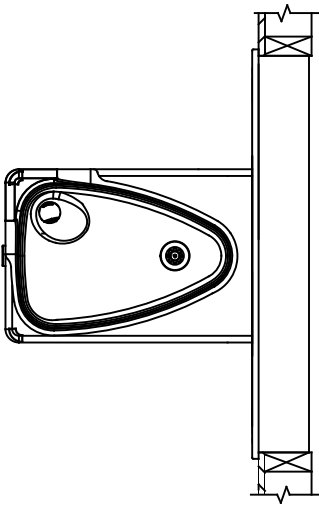
6700 MOUNTING PLATE
(BEHIND FINISH WALL)
- OR -
BOLT 1920HO ONTO EXISTING WALL
(MOUNTING HARDWARE ONLY SUPPLIED
WITH 6700 SERIES MOUNTING PLATES)




INSTALLATION ABOVE HAWS 1047

* IF YOUR FOUNTAIN IS THIS STYLE USE
THESE DIMENSIONS

1. SEE SEPARATE INSTALLATION DRAWINGS
FOR MOUNTING PLATES AND BACK PANELS
(SHOWN FOR REFERENCE - NOT SUPPLIED).
2. WHEN INSTALLING THIS UNIT, LOCAL,
STATE OR FEDERAL CODES SHOULD
BE ADHERED TO FOR INSTALLATION
LOCATIONS, WASTE & SUPPLY
REQUIREMENTS OTHER THAN SHOWN.



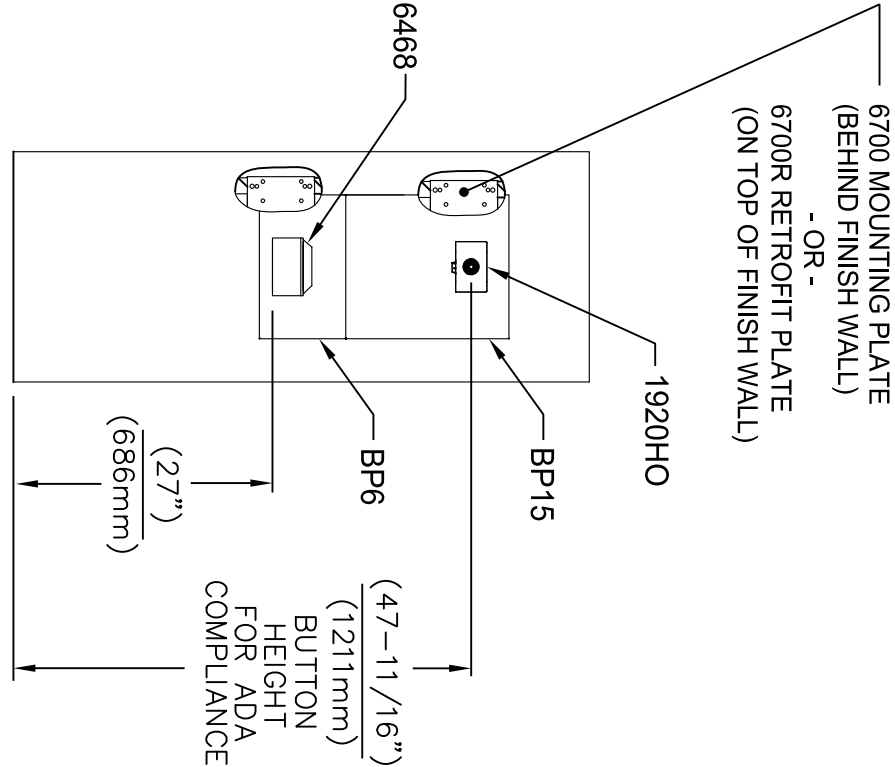
** EXISTING PUSH BUTTON
ASSEMBLY SHOWN, CAN
BE CONVERTED TO HANDS
OFF STYLE, USING RETRO-
FIT KIT MODEL 1RKHO.H.



Haws®
Since 1906

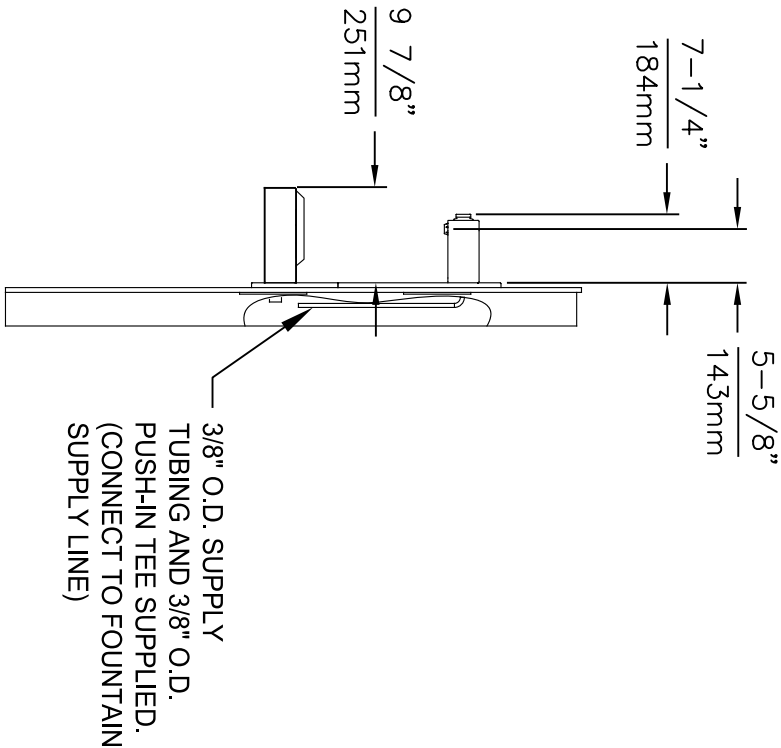
1455 KLEPPLE LANE
SPARKS, NEVADA 89431
(775) 359-4712 FAX (775) 359-1424
E-MAIL: HAWS@HAWS.CO.COM
WEBSITE: WWW.HAWS.CO.COM


EGN NO. REVISED PERBY:	MODEL(S)	PART NUMBER
5574 EGN 6136 FV	1920HO/1920HPSHO/1920WHO	0510001063.D
DRAWN: FV	DATE: 08/18/20	REVISION: 8
APPROVED: FV	DATE: 11/04/24	
SCALE: N/A	DRAWING TYPE: INSTALLATION	SIZE: A1 SHEET: 6 OF 8



INSTALLATION ABOVE 6468

1. SEE SEPARATE INSTALLATION DRAWINGS FOR MOUNTING PLATES AND BACK PANELS (SHOWN FOR REFERENCE - NOT SUPPLIED).
2. WHEN INSTALLING THIS UNIT, LOCAL, STATE OR FEDERAL CODES SHOULD BE ADHERED TO FOR INSTALLATION LOCATIONS, WASTE & SUPPLY REQUIREMENTS OTHER THAN SHOWN.





Haws®
Since 1906

1455 KLEPPLE LANE
SPARKS, NE/VADA 89431
(775) 359-4712 FAX (775) 359-1424
E-MAIL: HAWS@HAWS.CO.COM
WEBSITE: WWW.HAWS.CO.COM

ECON NO. REVISED PERBY:		MODEL(S)	
5744	ECON 6136	1920HO/1920HPSHO/1920WHO	
DRAWN:	DATE:	CHKD:	PART NUMBER
FV	10/04/21	KML	0510001063.D
APPROVED:	DATE:	SCALE:	REVISION
FV	11/04/24	N/A	8
DRAWING TYPE:		SIZE: A1 SHEET: 7 OF 8	
INSTALLATION			



- EGN NO.** 5744 **REVISED PER** BY: FV

DRAWING EGN 6136 **ID/DATE** 10/1/02 **CHKD.** KMM

APPROVED: FV **DATE** 11/04/02

MODEL(S)

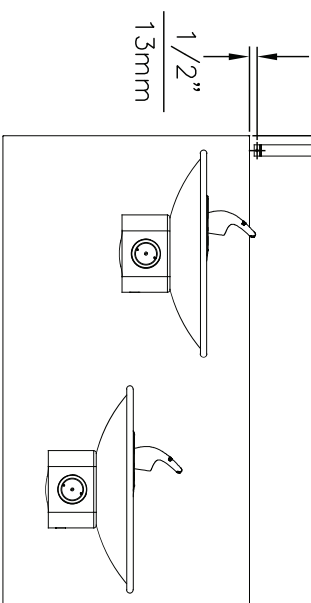
1920HO/1920HP-SHO/1920WHO

SCALE	N/A	DRAWING TYPE	INSTALLATION

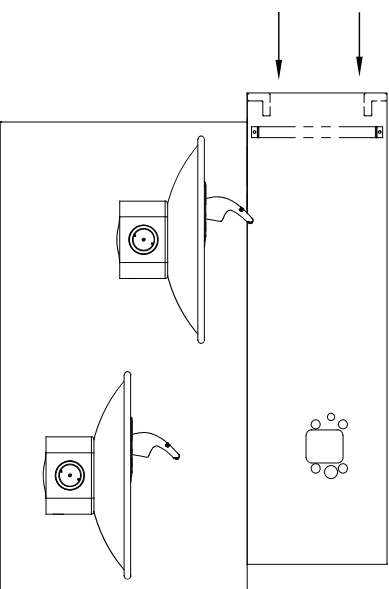
PART NUMBER	REVISION
0510001063.D	8

SIZE	A	SHEET	OF
		8	8

1455 KLEPPE LANE
SPARKS, NEVADA 89431
(775) 359-4712 FAX (775) 359-4124
E-MAIL: HAMS@HAWSCO.COM
WEBSITE: WWW.HAWSCO.COM



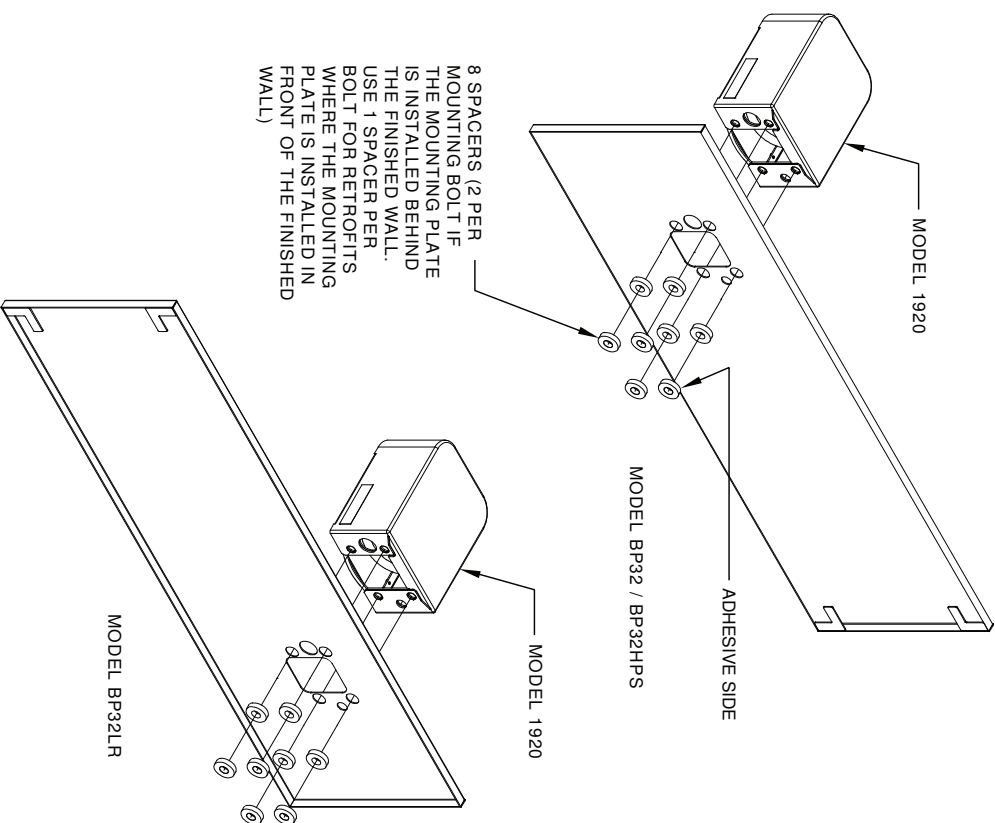
STEP 2
PLACE THE BACKPLATE AGAINST THE WALL AND SLIDE SIDEWAYS SO THE TABS CATCH UNDER THE BRACKET



STEP 3
INSTALL THE BOTTLE FILLER PER THE INSTRUCTIONS SUPPLIED WITH THE UNIT

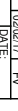
NOTES:

1. WHEN INSTALLING THIS UNIT, LOCAL, STATE OR FEDERAL CODES SHOULD BE ADHERED TO.



INSTALLATION OVER DOUBLE FOUNTAIN

SHOWN FROM REAR

		1455 KI. EPPE LANE SPARKS, NEVADA 89431 (775) 359-4712 FAX (775) 595-7424 E-MAIL: HAWMS@HAWMS.CO.COM WEBSITE: WWW.HAWMS.CO.COM	
ECU NO. REUSED PEER BY:		PART NUMBER	
5081	DATE: 10/02/17	05100000493.D	
DRAWN: ECU: 5172	CHKD: 10/02/17	REVISION	
APPROVED: 02/21/17	FW		
MODEL(S) DRAWING, BACK PANEL SPACER INST. BF			
SCALE: 1:1	DRAWING TYPE:	SIZE: A	SHEET 2 OF 2
INSTALLATION			

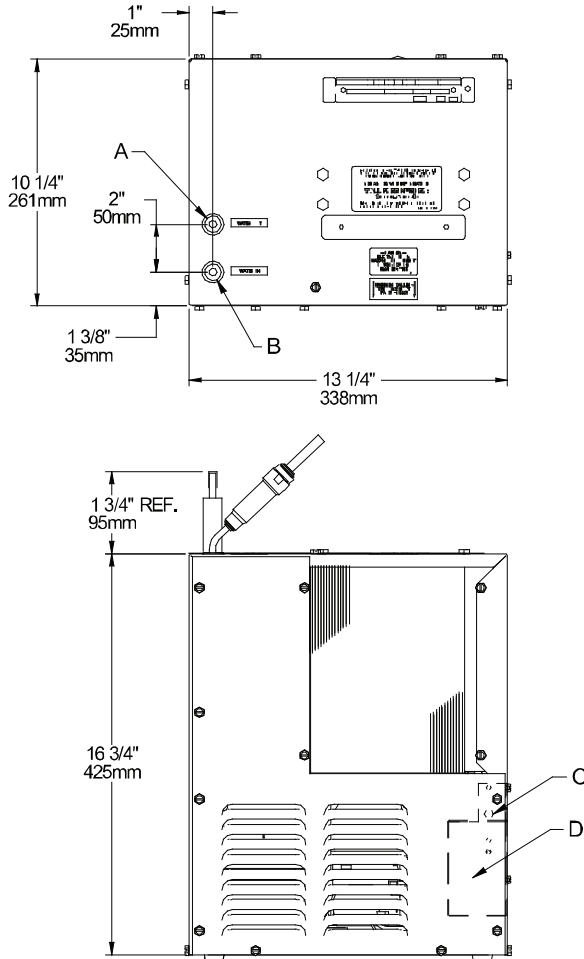
Installation Instructions

HCR8 Refrigeration Packages

NOTICE: This water cooler must be connected to the water supply using a dielectric coupling.

IMPORTANT! INSTALLER PLEASE NOTE.

The grounding of electrical equipment such as telephone, computers, etc., to water lines is a common procedure. This grounding may be in the building, or may occur away from the building. This grounding can cause electrical feedback into a water chiller, creating an electrolysis which causes a metallic taste or an increase in the metal content of the water. This condition is avoidable by using the proper materials indicated below.



LEGEND

A = 1/4" O.D. TUBE WATER OUTLET C = TEMPERATURE ADJUSTMENT
B = 1/4" O.D. TUBE WATER INLET D = ELECTRICAL

INSTALLATION

1. When mounting unit in an open area, to insure proper ventilation, maintain a 4" (102mm) clearance from cabinet louvers on each side of cooler. When mounting unit in a cavity or behind a wall maintain minimum space of 4" (102mm) on each side, 4" (102mm) on the top and a depth of 12" (305mm).
2. Water inlet is 1/4" (6 mm) O.D. tube. Contractor to supply the connections as required.
3. Connecting lines to be of unplated copper, thoroughly flushed to remove all foreign matter before being connected to cooler. If flushing does not remove all particles, a water strainer should be installed in supply line. This cooler is manufactured in such a manner that it does not in any way cause taste, odor, color or sediment problems.
4. Connect cooler to building supply line with a shut-off valve and install the in-line strainer between the valve and cooler.
5. Electrical: Make sure power supply is identical in voltage, cycle, and phase to that specified on cooler serial plate. Never wire compressor directly to the power supply.
6. This chiller has been designed for use with potable water **ONLY**.

START-UP

1. Open supply line valve.
2. Purge air from all water lines by operating bubbler valve of fountain to which cooler is connected. Steady stream assures all air is removed.
3. Rotate fan to insure proper clearance and free fan action.
4. Connect to electrical power.

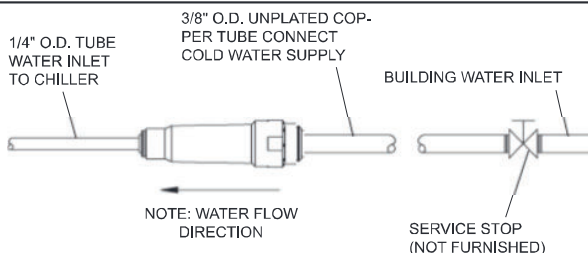
TROUBLE SHOOTING & MAINTENANCE

Temperature Control: Factory set at 50°F (± 5°) under normal conditions. For colder water, adjust screw on item no. 9 in clockwise direction.

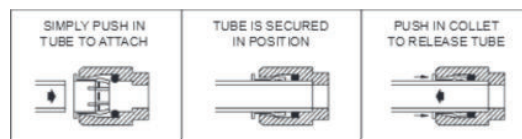
Ventilation: Cabinet louvers and condenser fins should be periodically cleaned with brush, air hose or vacuum cleaner. Excess dirt or poor ventilation can cause no cold water and compressor cycling on the compressor overload protector.

Lubrication: Motors are lifetime lubricated.

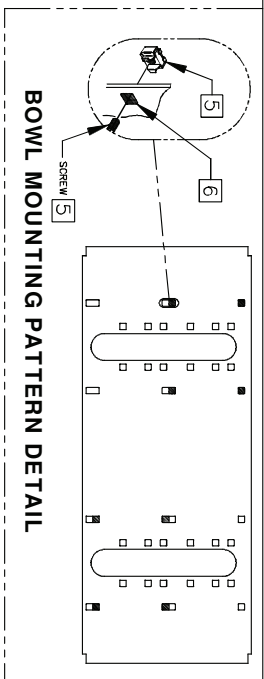
Actuation of Quick Connect Water Fittings: Cooler is provided with lead-free connectors which utilize an o-ring seal. To remove tubing from the fittings, relieve water pressure, push in on gray collar while pulling on the tubing. To insert tubing, push tube straight into fitting until it reaches a positive stop, approximately 3/4".



OPERATION OF QUICK CONNECT FITTINGS

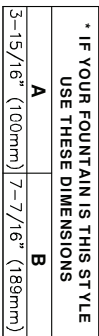


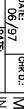
PUSHING TUBE IN BEFORE PULLING IT OUT HELPS TO RELEASE TUBE



1. ENSURE ELECTRICAL POWER IS OFF AND POWER MATCHES VOLTAGE. PHASE AND CYCLE LISTED ON CHILLER LABEL.
2. REMOVE FRONT PANEL TO GAIN ACCESS TO INTERNAL JUNCTION BOX.
3. HARDWIRE CHILLER THROUGH ITS SIDE. WIRE IN ACCORDANCE WITH LOCAL, STATE OR FEDERAL CODES
4. REPLACE FRONT PANEL. DO NOT APPLY POWER UNTIL WATER SUPPLY IS CONNECTED AND ON.

1. THIS FRAME IS USED WITH SEVERAL DIFFERENT MODELS. SEE INSTALLATION INSTRUCTIONS RECEIVED WITH THE FOUNTAIN FOR PROPER LOCATIONS OF 5/16"-18 PANEL NUT RETAINERS FOR ROUGH-IN USE. THE APPROPRIATE DIMENSIONS SHOWN ABOVE. WASTE AND SUPPLY HEIGHTS ARE ALSO DETAILED ON THE FOUNTAIN INSTALLATION INSTRUCTIONS.
2. HOLD ROUGH-IN DIMENSIONS $\pm 1/8"$ (3.2mm).
3. WHEN INSTALLING THIS UNIT LOCAL, STATE OR FEDERAL CODES SHOULD BE ADHERED TO. FOR DIFFERENT INSTALLATION HEIGHTS, OTHER THAN SHOWN, DIMENSIONS MARKED (*) MUST BE ADJUSTED ACCORDINGLY.
4. ALIGN HOLES IN CHILLER SUPPORT TRAY WITH HOLES IN FRAME AND FASTEN IN PLACE WITH #10 SHEET-METAL SCREWS SUPPLIED WITH UNIT.
5. FOUNTAIN REMOVAL: FIRST REMOVE SCREWS AND THEN SQUEEZE CLIPS ON NUT RETAINER TO POP OUT. INSTALL IS REVERSE OF REMOVAL.
6. HOLE COMBINATION SHOWN ABOVE IS FOR USE WITH LOW FOUNTAIN ON THE RIGHT AND HIGH FOUNTAIN ON THE LEFT. USE OPPOSITE HOLES FOR HIGH ON RIGHT AND LOW ON LEFT.
7. IMPORTANT: A L.H. LOW (OPTIONAL) CONFIGURATION WILL REQUIRE A DIFFERENT BACK PANEL AND THE WASTE AND SUPPLY DIMENSIONS SHOWN (*) MUST BE REVERSED.





Haws
Corporation

INFO FAX: 1-888-FAX-HAWS (1-888-329-4297)

FAX: 1455 Kleppe Ln, Sparks, NV, 89431

Phone: 775-559-4712 Fax: 775-559-7424

Haws Ag Bothingg 3 Ch-3401 Burgdorf Switzerland

Hows Mig Pte Ltd 14 Sungai Kerdat Loop Singapore 729533

e-Mail: Haws@awsco.com website: www.hawsco.com

FOR NO. RECEIVED PER FAX

DATE	PRINTER	PAGE
06/97	181	1
DATE	DATE	DATE

MODEL(S):

MIGTFR LG MOUNTING FRAME DUAL

INFO FAX DOC # 265.4

PRINTING THE INSTALLATION/FAXBACK

PART NUMBER:

002080318

006655A00

006655A00

006655A00

SIZE: A


1/8"

1/8"

1/8"

6700 INDEX

INSTALLATION WITH:	TYPICAL USES	SEE SHEET ...
GENERAL INSTALLATION	IMPORTANT INFORMATION FOR ALL INSTALLATIONS	3 OF 6
1001 BOWLS	HAWS SERIES 1001X, 1001.8X	3 OF 6
1107 BOWLS	HAWS SERIES 1107X, 1107.8X	3 OF 6
1109 BOWLS	HAWS SERIES 1109X, 1109.8X	3 OF 6
1047 BOWLS	HAWS SERIES 1047	4 OF 6
1011 BOWLS	HAWS SERIES 1011X, 1011.8X	4 OF 6
1119 BOWLS	HAWS SERIES 1119X, 1119.8X	4 OF 6
1117 BOWLS	HAWS SERIES 1117X, 1117.8X	5 OF 6
1311 BOWLS	HAWS SERIES 1311	5 OF 6
1501 BOWLS	HAWS SERIES 1501	5 OF 6
CHILD HEIGHT	HAWS 1107PCH, 1109PCH, 1311PCH	6 OF 6



Haws

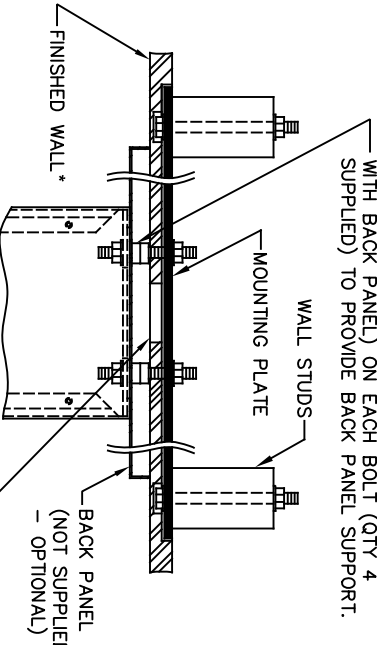
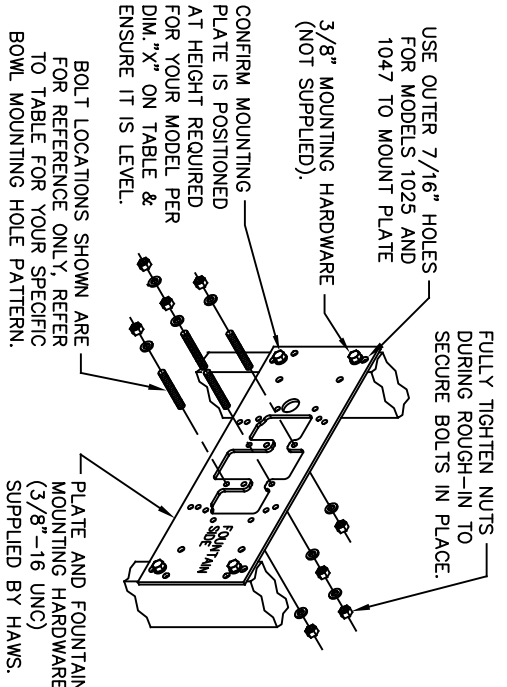
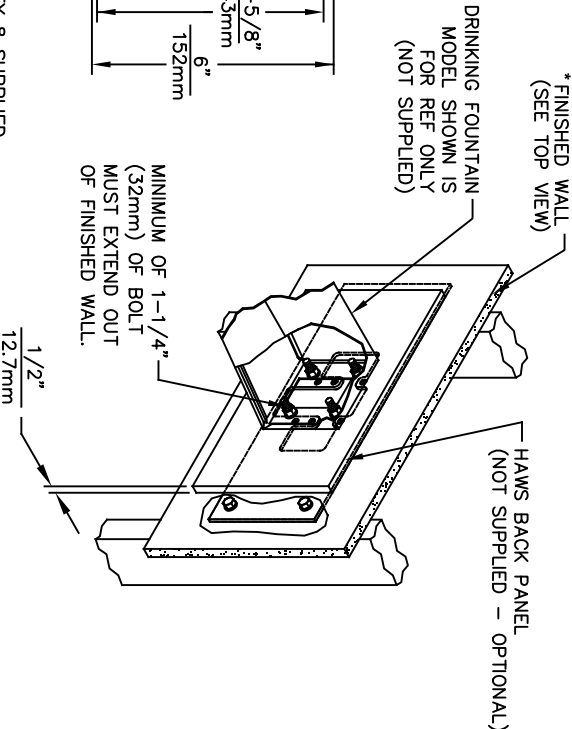
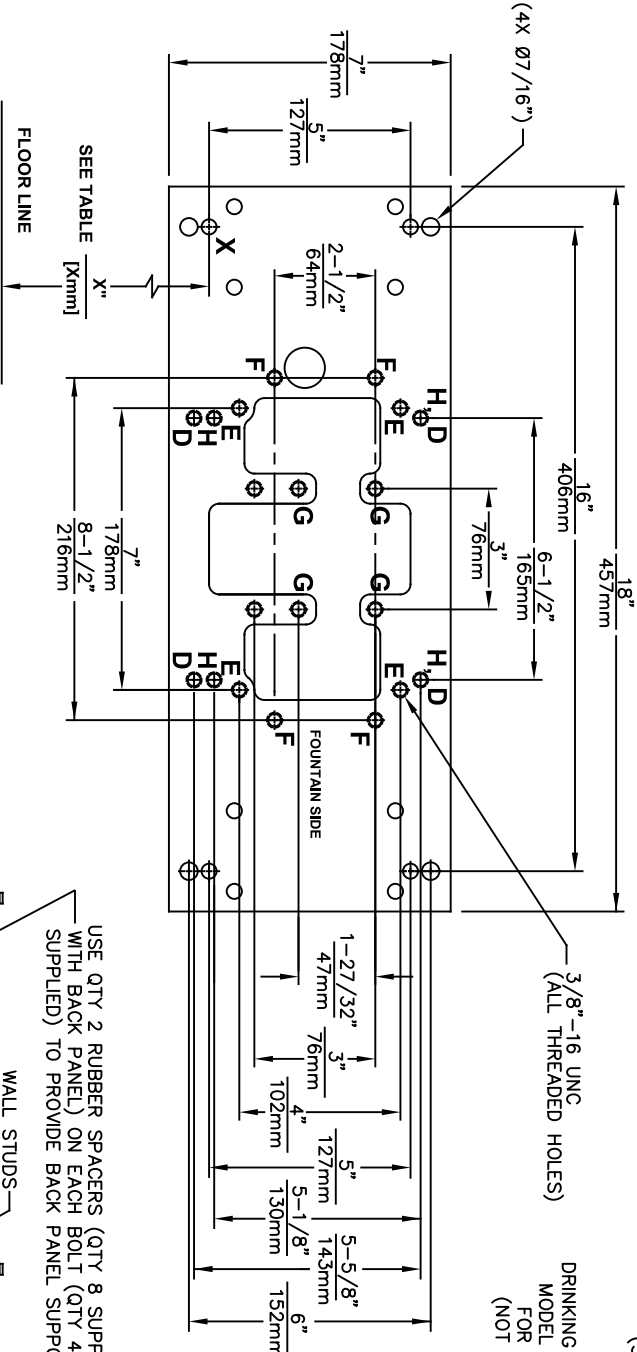
Since 1906

1455 KLEPPE LANE
SPARKS, NEVADA 89431
(775) 359-4712 FAX (775) 359-7424
E-MAIL: HAWS@HAWSCO.COM
WEBSITE: WWW.HAWSCO.COM

ECN NO. REVISED PER BY: JG
DRAWN: JG
DATE: 10/03/24
APPROVED: JG

MODEL(S)
67/00

PART NUMBER
0002080016
REVISION
26




DRINKING FOUNTAIN (ONLY) AT 27" ADULT HEIGHT (SEE SPECIFIC MODEL O&M'S FOR OTHER HEIGHTS)			
MODEL	USE BOWL MTG. HOLE PATTERN	USE "X" DIM. BELOW TO POSITION MOUNTING PLATE HOLE "X"	
1001	"G"	25-3/8" [645mm]	
1025	"D"	28-1/8" [714mm]	
1047	"E"	24-3/8" [619mm]	
1105	"H"	34-5/16" [872mm]	
1107	"F"	26-3/16" [665mm]	
1109	"H"	27-5/16" [694mm]	
1109.14	"H"	27-5/16" [694mm]	
1109FR	"H"	27-5/16" [694mm]	
1311	"E"	26-3/4" [679mm]	
WASTE DRIP TRAY (ONLY) AT 27" ADULT HEIGHT			
6468	"G"	25-3/8" [645mm]	
1922	"G"	25-3/8" [645mm]	

6700 MOUNTING PLATE
FOR USE WITH
DRINKING FOUNTAINS
AND WASTE DRIP TRAYS
AT 27" ADULT HEIGHT
(SEE SHEETS 2 - 5 FOR USE WITH
BOTTLE FILLER 1920/1920HO SERIES
AND CHILD HEIGHT APPLICATIONS)

****FINISH WALL OVER MOUNTING PLATE AND BEHIND BACK PANEL. MAKE SURE THAT FINISHED WALL EXTENDS WITHIN THE BRACKET/BOWL MOUNTING HOLES (TO PROVIDE SURFACE AREA FOR RUBBER SPACERS TO CONTACT).**

CAUTION

REGARDING CONCRETE/MASONRY WALL MOUNTING: DO NOT SECURE MOUNTING PLATE TO SAME SIDE OF WALL AS FOUNTAIN. AVOID COMPROMISING INTEGRITY OF WALL WHEN ANCHORING FOUNTAIN. IT IS RECOMMENDED THAT INSTALLER CALL TECHNICAL SUPPORT IF THERE ARE ANY QUESTIONS AS TO HOW TO OBTAIN A PROPER ANCHOR IN CONCRETE/MASONRY WALLS. 1-800-766-5612

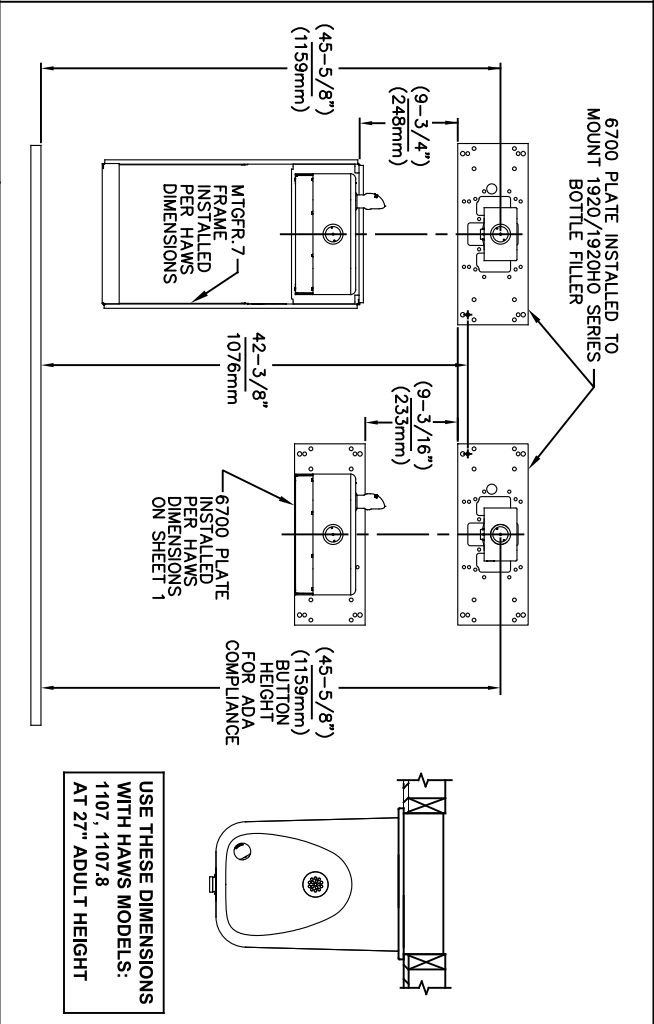
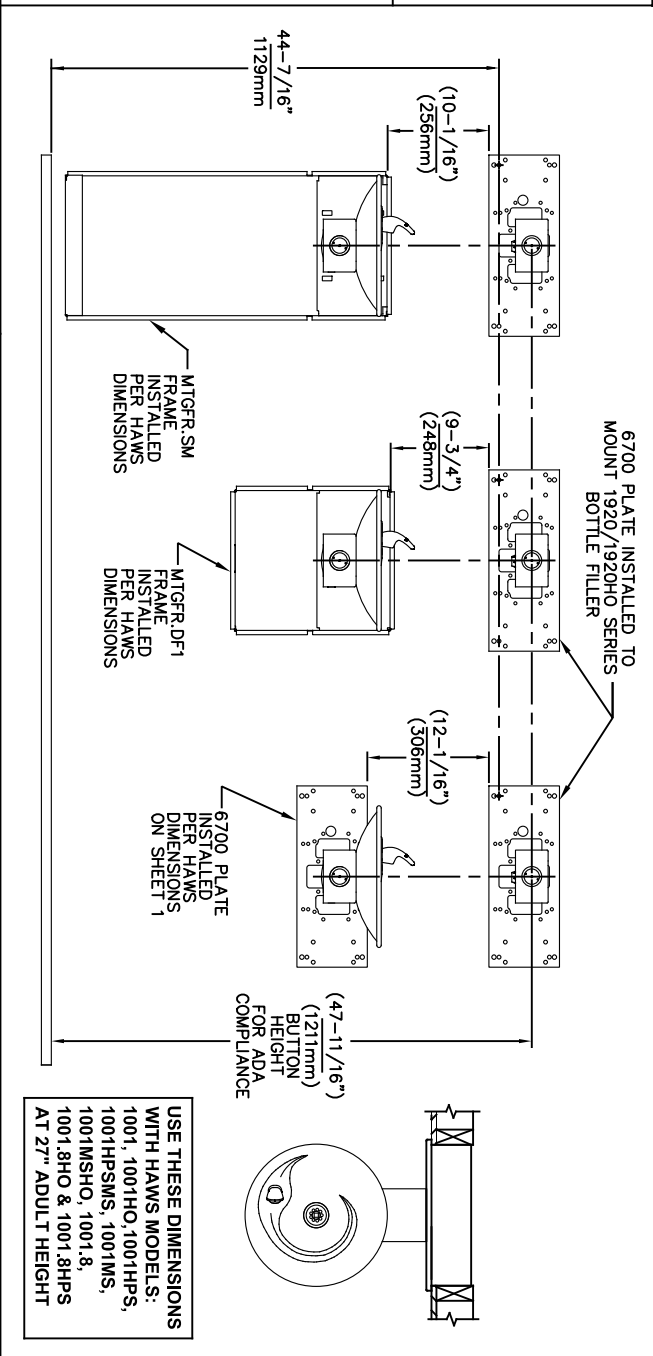
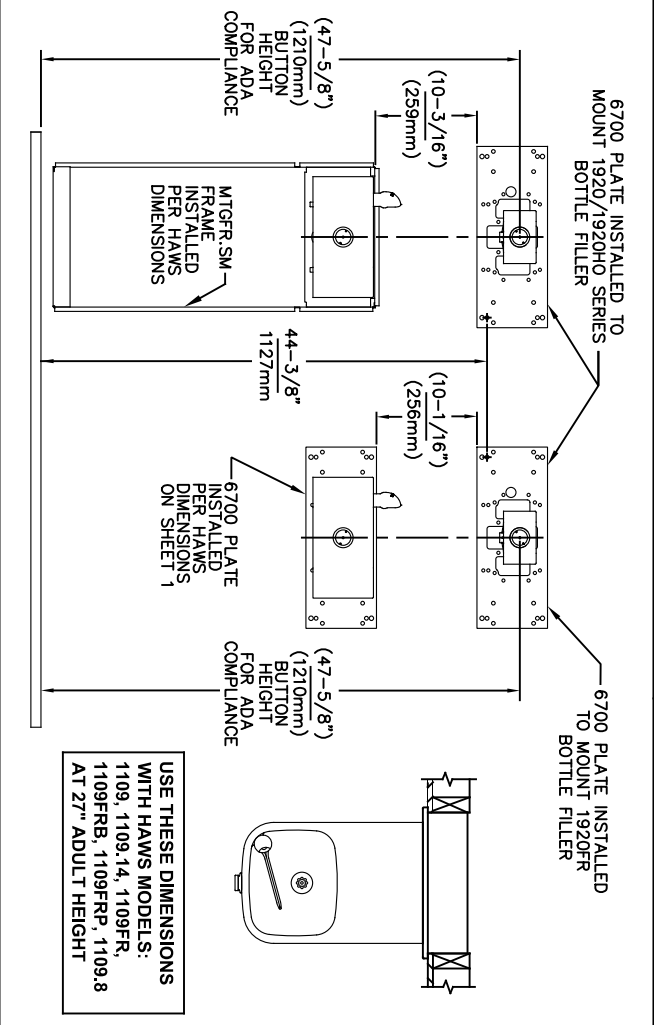
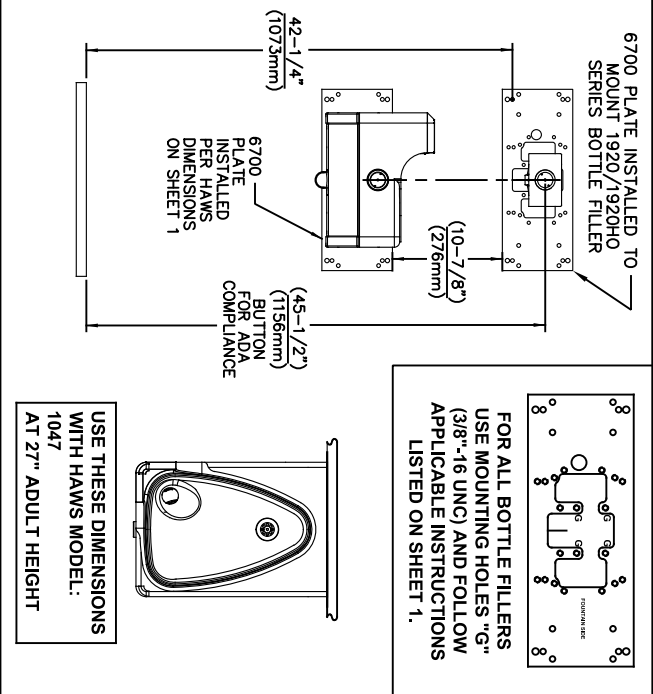
**Haws®**
Since 1906

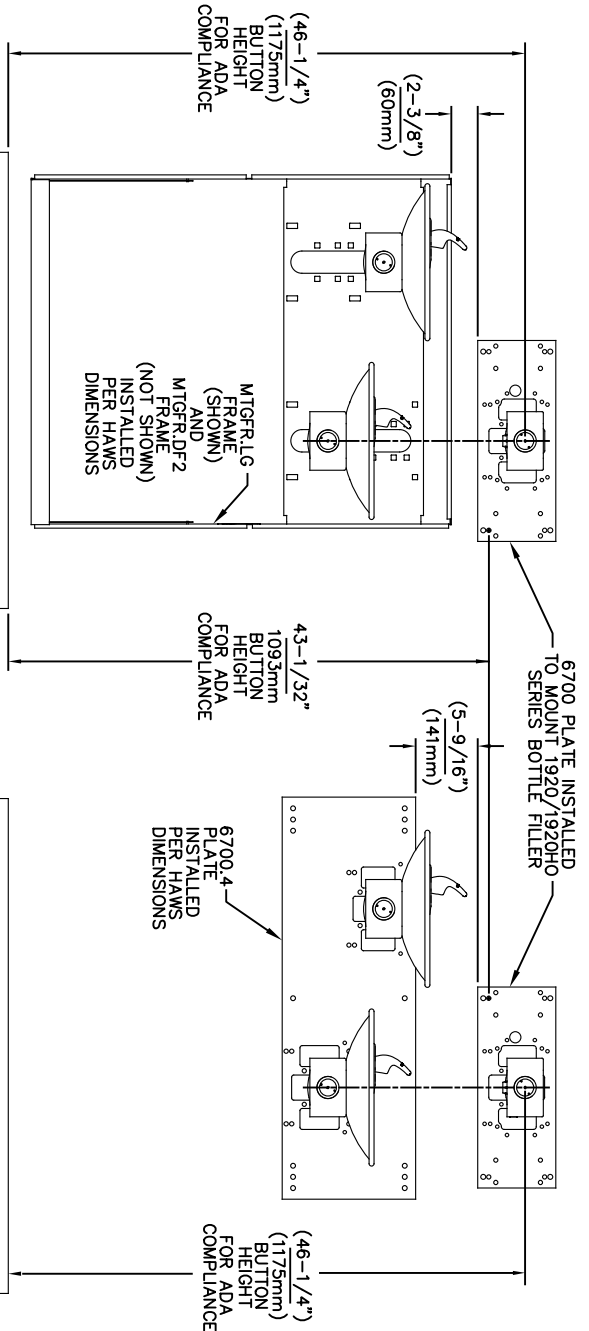
1455 KLEPPE LANE
SPARKS, NEVADA 89431
(775) 359-4712 FAX (775) 359-7424
E-MAIL: HAWS@HAWS.CO.COM
WEBSITE: WWW.HAWS.CO.COM

ECN NO. REVISED PER BY:	MODEL(S)	
DRAWN: ECN: 6148 JG		
CAL: 0940-03 JG		
APPROVED: DATE: 02/11/25		
SCALE: N/A	DRAWING TYPE:	SIZE: A
	INSTALLATION	SHEET 2 OF 6
		REVISION: 26

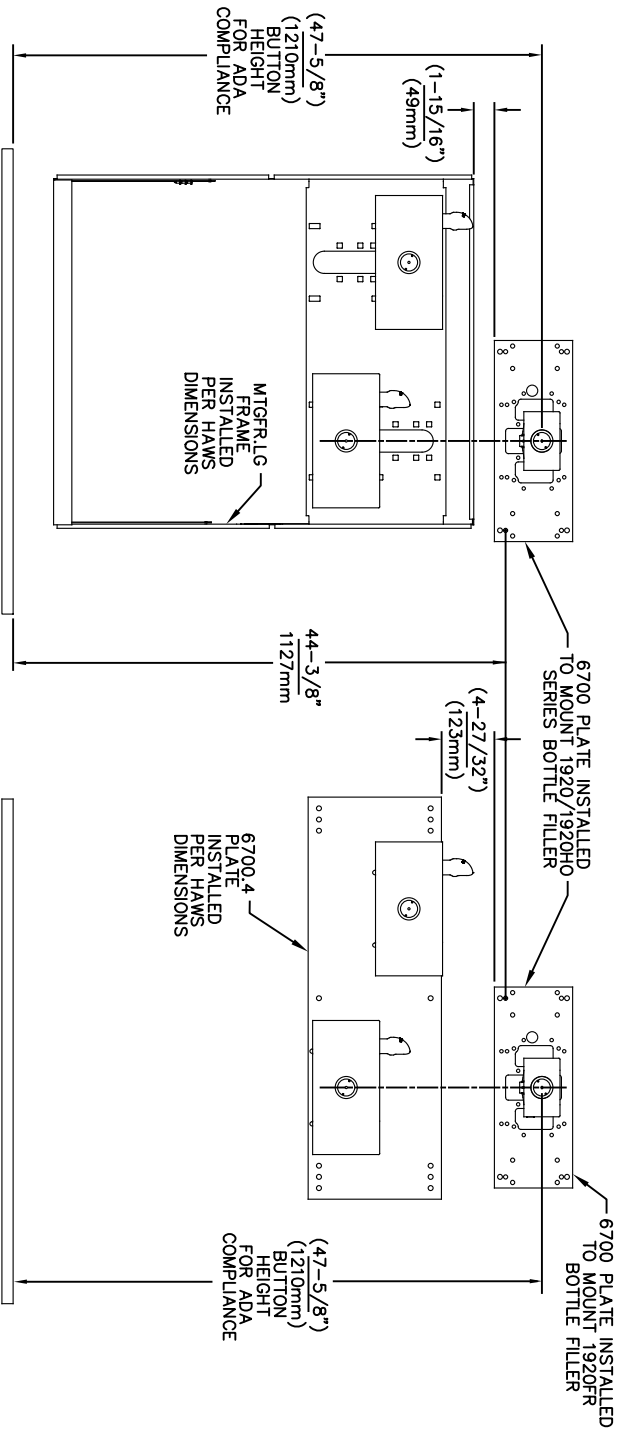
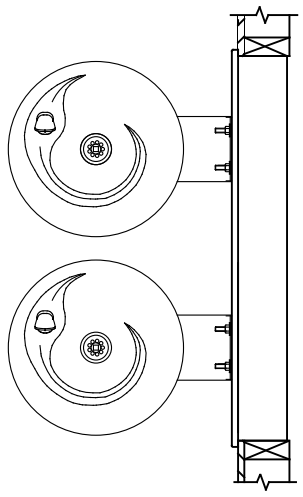
6700

PART NUMBER
0002080016

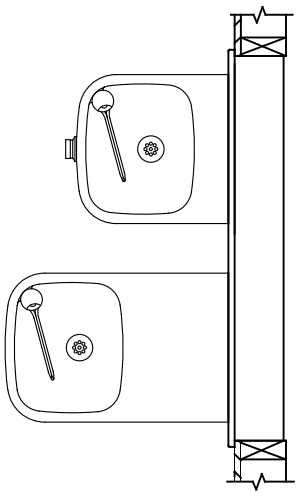




USE THESE MOUNTING DIMENSIONS IF INSTALLING OVER HAWS FOUNTAIN
MODEL: 1011, 1011HO, 1011HO2, 1011HPS, 1011HPSHO, 1011HPSHO2, 1011HPSMS, 1011HMS, 1011MSHO, 1011MSHO2, 1011.8, 1011.8HO, 1011.8HO2 & 1011.8HPSM AT 27" ADULT HEIGHT
INSTALL THE 6700 ABOVE THE FOUNTAIN MOUNTING PLATE OR FRAME AT THE DIMENSION SHOWN FOR CORRECT BACKPANEL SPACING
BACK PANELS FOR BOTTLE FILLERS (NOT SUPPLIED - OPTIONAL) ARE NOT SHOWN FOR CLARITY.




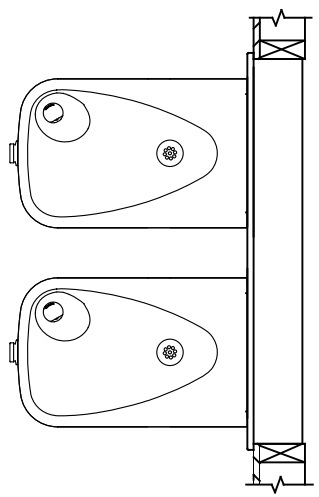
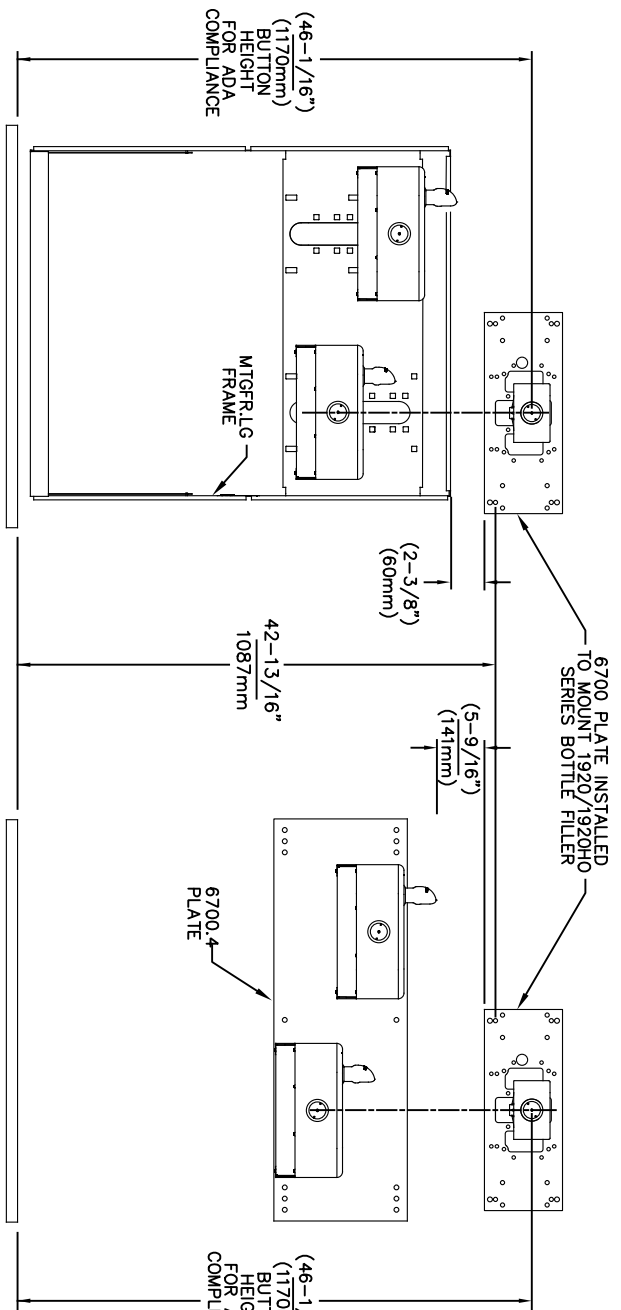
USE THESE MOUNTING DIMENSIONS IF INSTALLING OVER HAWS FOUNTAIN
MODEL: 1119, 1119.14, 1119.14HO, 1119.14HO2, 1119FR, 1119FRB, 1119FRP, 1119HO, 1119HO2 & 1119.8 AT 27" ADULT HEIGHT
INSTALL THE 6700 ABOVE THE FOUNTAIN MOUNTING PLATE OR FRAME AT THE DIMENSION SHOWN FOR CORRECT BACKPANEL SPACING
BACK PANELS FOR BOTTLE FILLERS (NOT SUPPLIED - OPTIONAL) ARE NOT SHOWN FOR CLARITY.



- NOTES:
1. WHEN INSTALLING THIS UNIT, LOCAL, STATE OR FEDERAL CODES SHOULD BE ADHERED TO.
 2. BACK PANELS (OPTIONAL) NOT SHOWN FOR CLARITY.

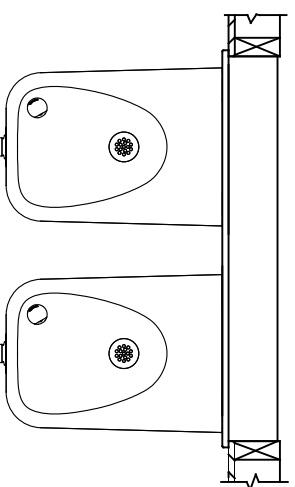
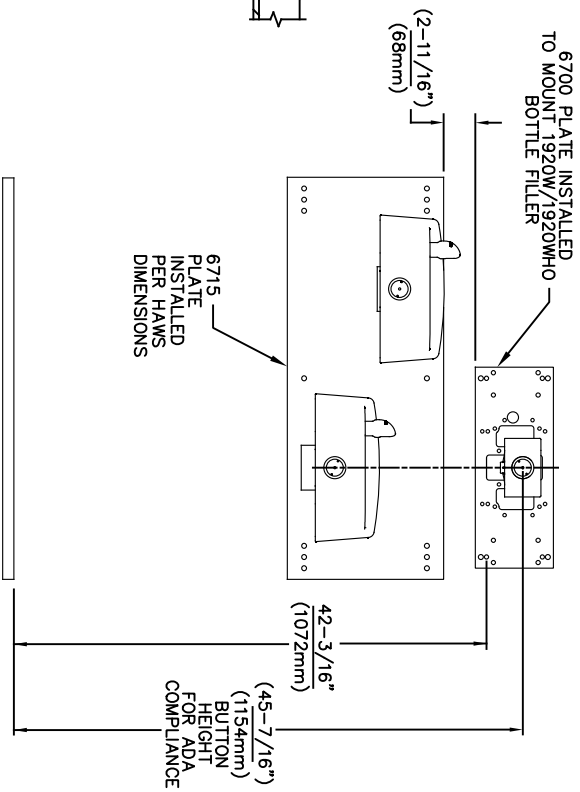
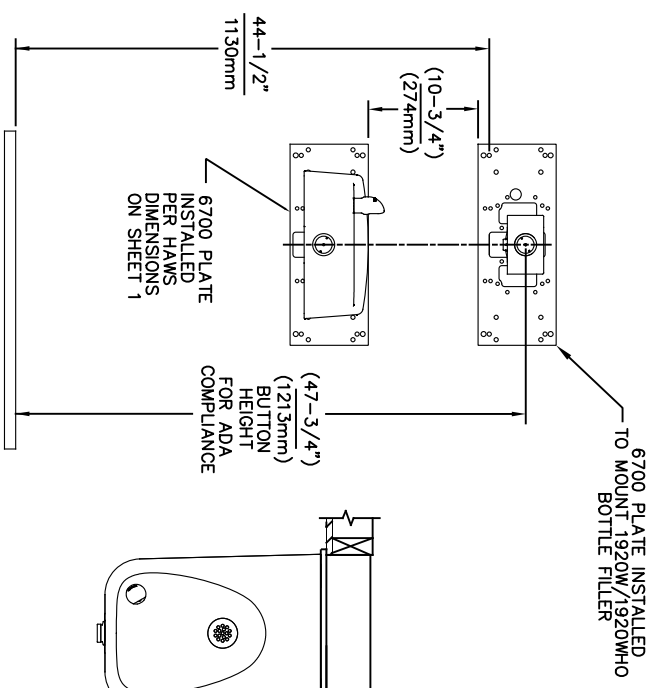
6700 MOUNTING PLATE
FOR USE WITH BOTTLE FILLER
(SEE SHEET 1 FOR USE WITH
DRINKING FOUNTAINS)

		1456 KLEPPE LANE SPARKS, NEVADA 89431 (775) 359-4712 FAX (775) 359-7424 E-MAIL: HAWS@HAWS.CO.COM WEBSITE: WWW.HAWS.CO.COM	
ECN NO. REVISED PERBY:	MODEL(S)	6700	
5550 ECN 6148 JG	DATE: 09/14/20 JG	PART NUMBER 0002080016	
DRAWN: FV	DATE: 02/11/25	REVISION: 26	
APPROVED: FV	SCALE: 1:13	DRAWING TYPE: INSTALLATION	
SIZE: A		SHEET 4 OF 6	



USE THESE MOUNTING DIMENSIONS IF
INSTALLING OVER HAWS FOUNTAIN
MODEL: 1117, 1117.8
AT 27" ADULT HEIGHT

INSTALL THE 6700 ABOVE THE
FOUNTAIN MOUNTING PLATE OR
FRAME AT THE DIMENSION SHOWN
FOR CORRECT BACKPANEL SPACING
BACK PANELS FOR BOTTLE FILLERS
(NOT SUPPLIED - OPTIONAL) ARE NOT
SHOWN FOR CLARITY.




USE THESE MOUNTING DIMENSIONS IF
INSTALLING OVER HAWS FOUNTAIN
MODEL: 1311, 1501
AT 27" ADULT HEIGHT

INSTALL THE 6700 ABOVE THE
FOUNTAIN MOUNTING PLATE AT
THE DIMENSION SHOWN FOR CORRECT
BACKPANEL SPACING (IF APPLICABLE).
BACK PANEL FOR BOTTLE FILLER
(NOT SUPPLIED - OPTIONAL) IS NOT
SHOWN FOR CLARITY.

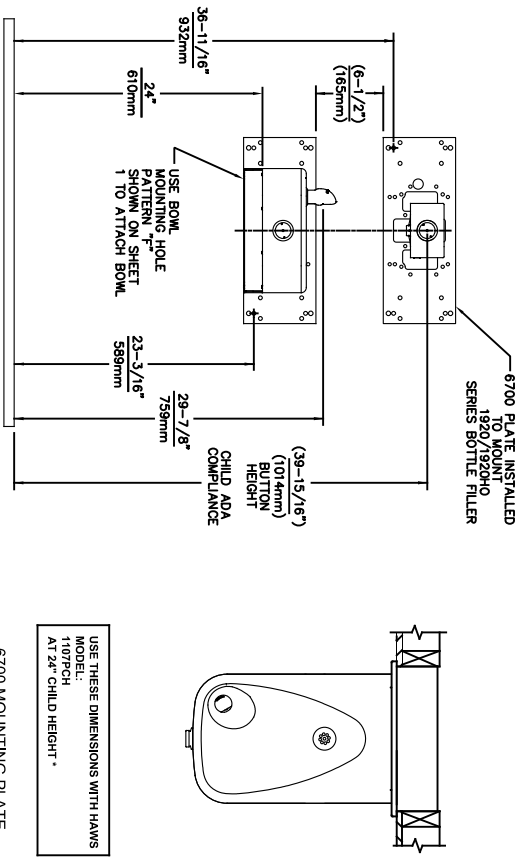
- NOTES:
1. WHEN INSTALLING THIS UNIT, LOCAL, STATE OR FEDERAL CODES SHOULD BE ADHERED TO.
 2. BACK PANELS (OPTIONAL) NOT SHOWN FOR CLARITY.

6700 MOUNTING PLATE
FOR USE WITH BOTTLE FILLER
(SEE SHEET 1 FOR USE WITH
DRINKING FOUNTAINS)

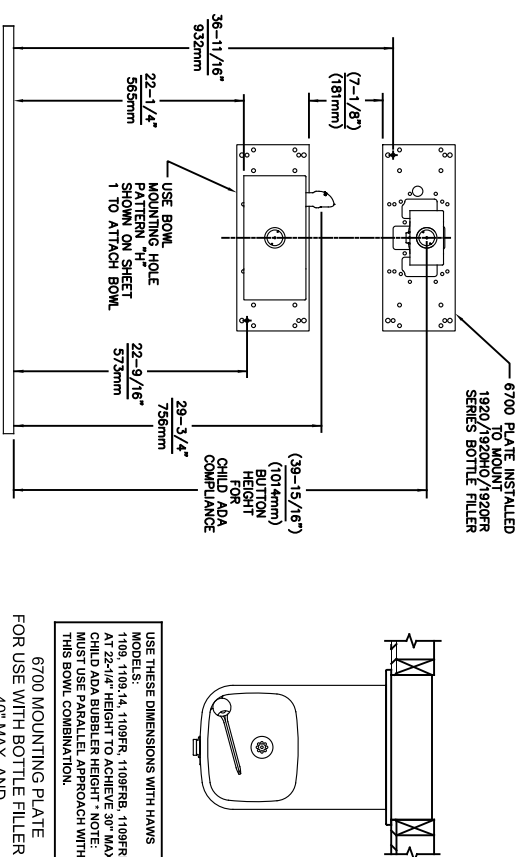


Since 1906

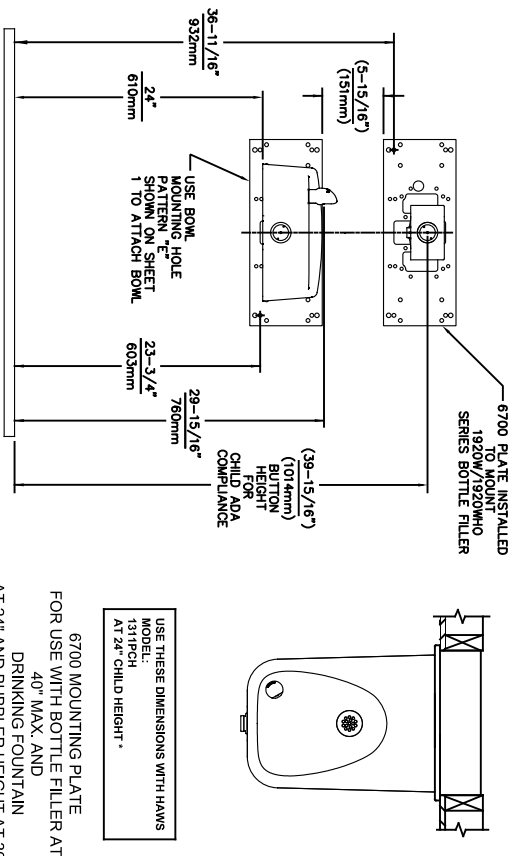
ECN NO. 5550	REVISED PERBY: 05/14/20	MODEL(S) 6700	1456 KLEPPE LANE SPARKS, NEVADA 89431 (775) 359-4712 FAX (775) 359-7424 E-MAIL: HAWS@HAWS.CO.COM WEBSITE: WWW.HAWS.CO.COM
DRAWN: FV	DATE: 02/11/25	SCALE: 1:13	DRAWING TYPE: INSTALLATION
APPROVED: FV	DATE: 02/11/25	SHEET 5	OF 6



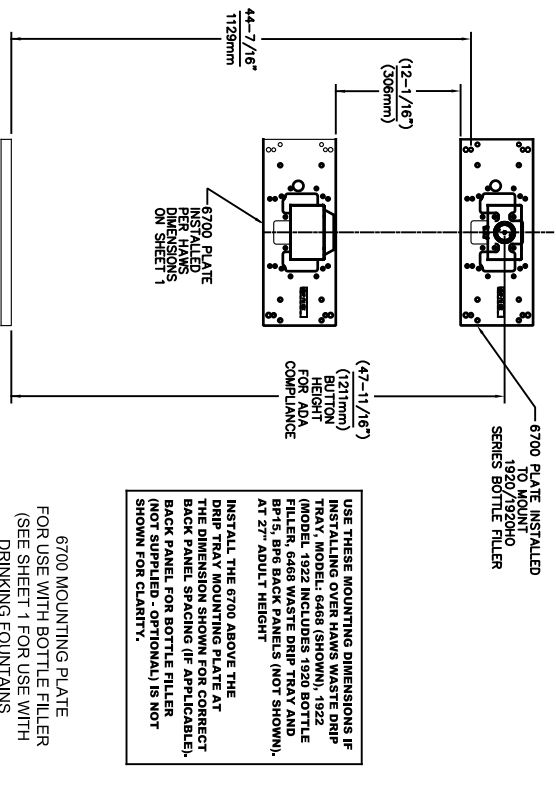
6700 MOUNTING PLATE
FOR USE WITH BOTTLE FILLER AT
40\" MAX. AND
DRINKING FOUNTAIN
AT 24\" AND BUBBLER HEIGHT AT 30\"
MAX. FOR CHILD ADA HEIGHT
(SEE SHEETS 1 & 2 FOR USE WITH
DRINKING FOUNTAIN AT 27\" ADULT
HEIGHT DIMENSIONS)



6700 MOUNTING PLATE
FOR USE WITH BOTTLE FILLER AT
40\" MAX. AND
DRINKING FOUNTAIN
BUBBLER HEIGHT AT 30\" MAX.
FOR CHILD ADA HEIGHT
MUST USE PARALLEL APPROACH
WITH THIS BOWL COMBINATION
(SEE SHEETS 1 & 2 FOR USE WITH
DRINKING FOUNTAIN AT 27\" ADULT
HEIGHT DIMENSIONS)



6700 MOUNTING PLATE
FOR USE WITH BOTTLE FILLER AT
40\" MAX. AND
DRINKING FOUNTAIN
AT 24\" AND BUBBLER HEIGHT AT 30\"
MAX. FOR CHILD ADA HEIGHT
(SEE SHEETS 1 & 4 FOR USE WITH
DRINKING FOUNTAIN AT 27\" ADULT
HEIGHT DIMENSIONS)



6700 MOUNTING PLATE
FOR USE WITH BOTTLE FILLER
(SEE SHEET 1 FOR USE WITH
DRINKING FOUNTAINS
AND WASTE DRIP TRAY)



Since 1906

1456 KLEPPE LANE
SPARKS, NEVADA 89431
(775) 359-4712 FAX (775) 359-7424
E-MAIL: HAWS@HAWS.CO.COM
WEBSITE: WWW.HAWS.CO.COM

ECN NO. REVISED PERBY: MODEL(S)
5893 1 ECN: 6148 JG
DRAWN: DATE: CHKD:
FV 07/26/23 JG
APPROVED: DATE: SCALE: 1:13 DRAWING TYPE: INSTALLATION SHEET A OF 6
REVISION: 26

CALLOUT LEGEND	
A	1/4" OD WATER OUTLET
B	3/8" OD WATER INLET
C	TEMPERATURE CONTROL
D	JUNCTION BOX
E	ELECTRICAL WIRING OPENING

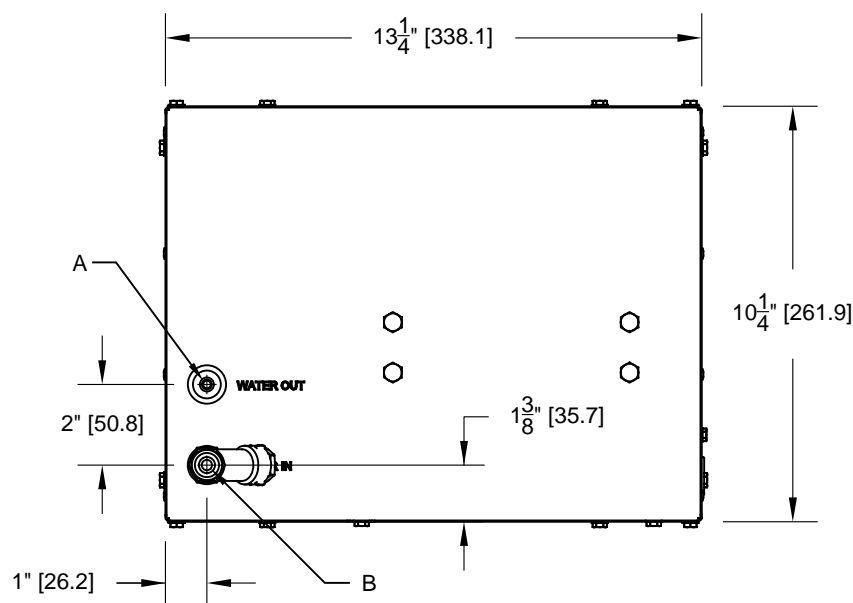


FIG. 2

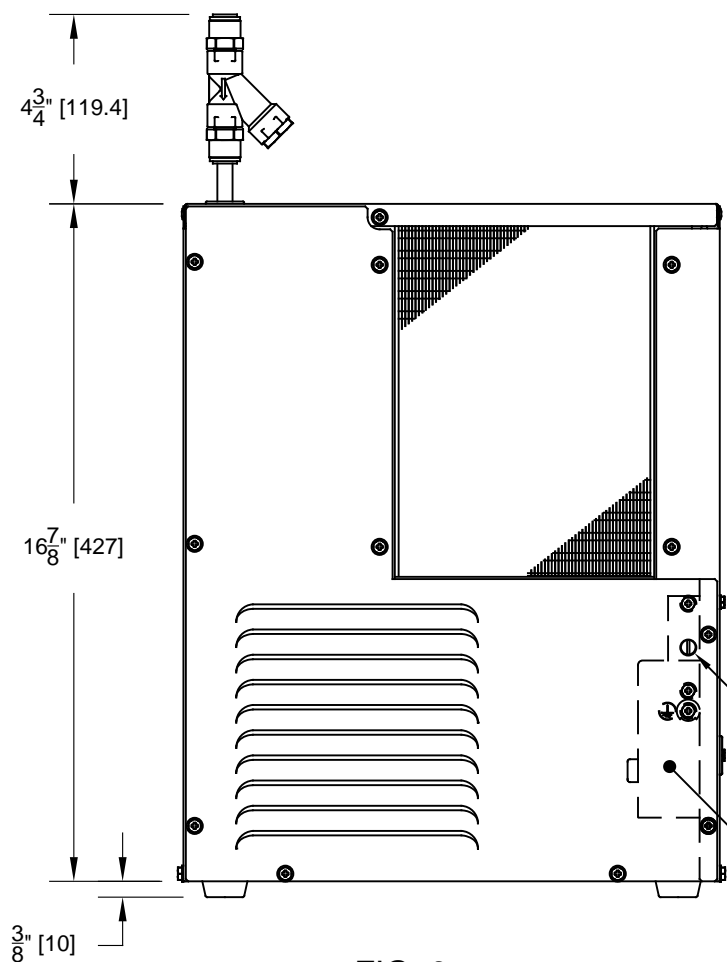


FIG. 3

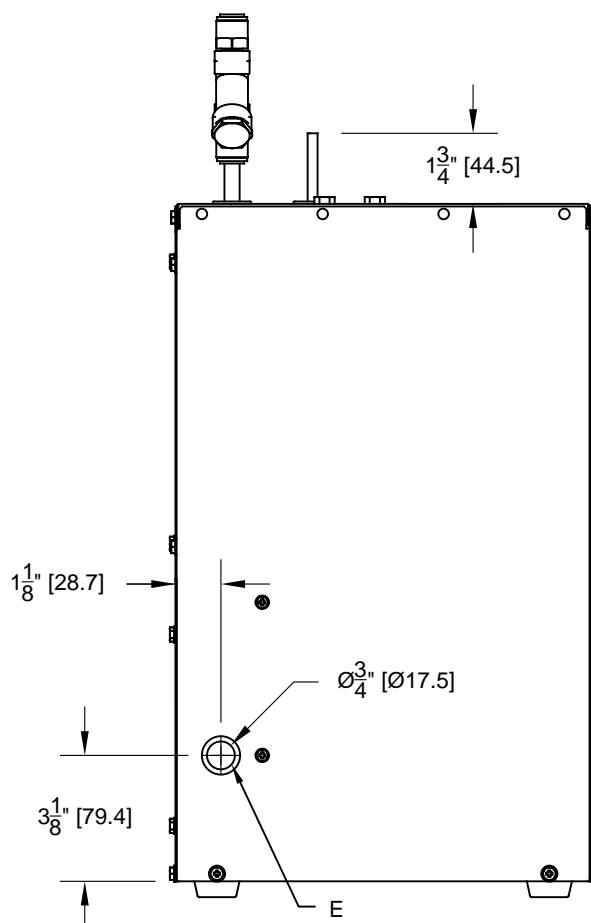



FIG. 4

		Haws®		1455 KLEPPE LANE SPARKS, NEVADA 89431 (775) 359-4712 FAX (775) 359-7424 E-MAIL: HAWS@HAWS.CO.COM WEBSITE: WWW.HAWS.CO.COM	
ECN NO. 4997	REVISED PER ECN: 5401	BY DHP	MODEL(S) HCR8 REMOTE CHILLER		PART NUMBER 0580000134.D
DRAWN VWC	DATE 01/25/16	CHKD DHP			REVISION 4
APPROVED JL	DATE 02/05/19		SCALE: NA	DRAWING TYPE: INSTALLATION	SIZE: A
					SHEET 1 OF 2

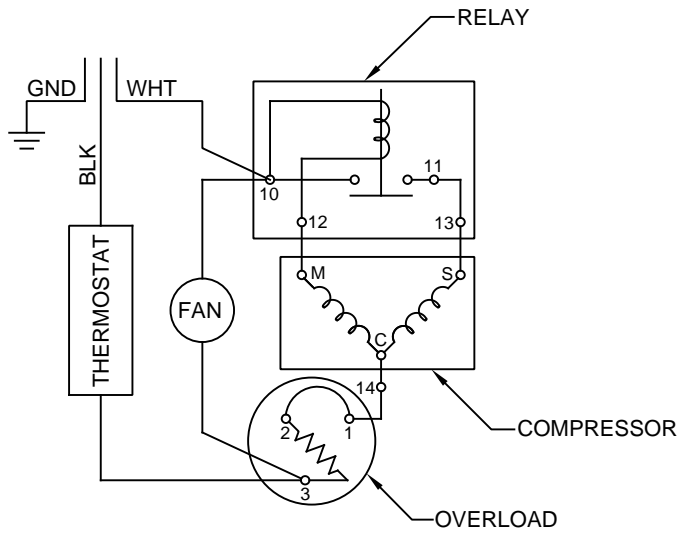


FIG. 5
WIRING DIAGRAM

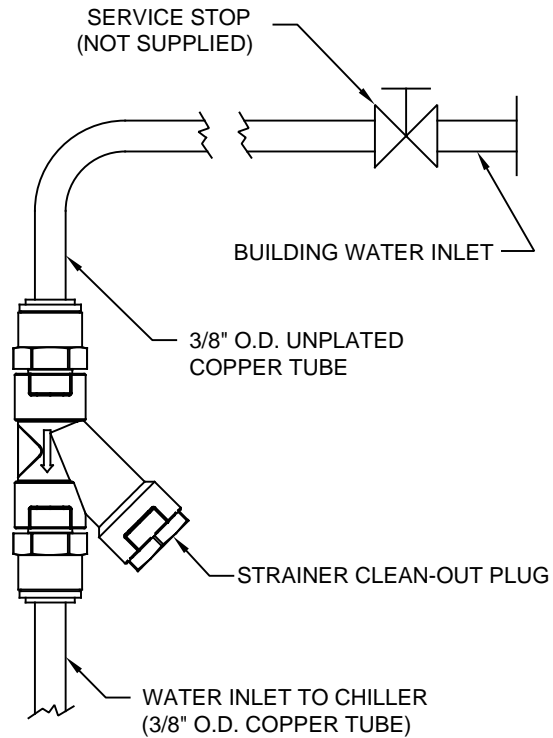



FIG. 6
WATER CONNECTION DIAGRAM

		Haws®		1455 KLEPPE LANE SPARKS, NEVADA 89431 (775) 359-4712 FAX (775) 359-7424 E-MAIL: HAWS@HAWSCO.COM WEBSITE: WWW.HAWSCO.COM	
ECN NO. 4997	REVISED PER ECN: 5401	BY DHP	MODEL(S)	PART NUMBER 0580000134.D	
DRAWN VWC	DATE 01/25/16	CHKD DHP	HCR8 REMOTE CHILLER		REVISION 4
APPROVED JL	DATE 02/05/19	SCALE: NA	DRAWING TYPE: INSTALLATION	SIZE: A	SHEET 2 OF 2