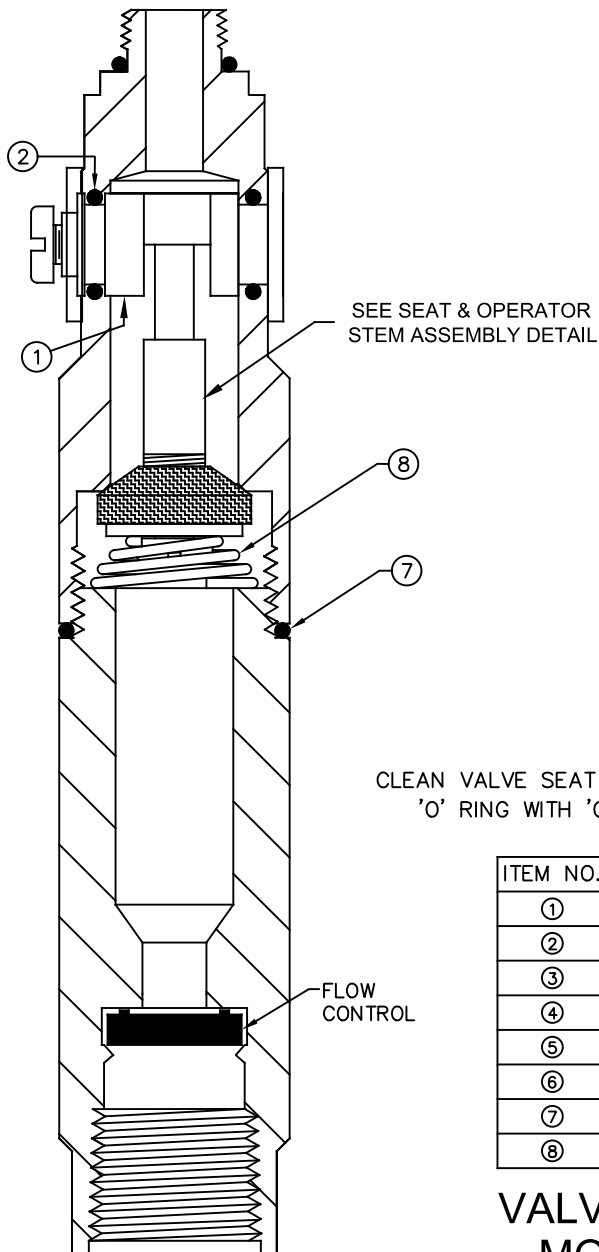
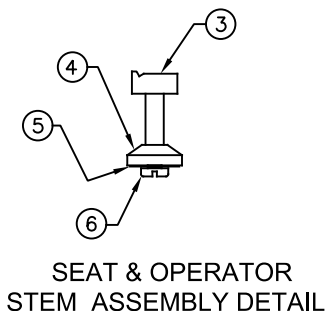


NOTES:

1. IN ORDER TO COMPLY WITH STATE CODES, THE USE OF A VACUUM BREAKER IS REQUIRED WITH ALL HAND HELD EYE/FACE WASH AND BODY SPRAY UNITS (HAWS OFFERS MODEL SP212).
2. SQUEEZE VALVE MUST BE MANUALLY PULLED CLOSE TO STOP FLOW.



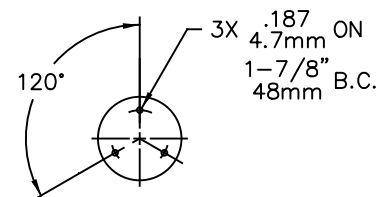
SEE SEAT & OPERATOR STEM ASSEMBLY DETAIL



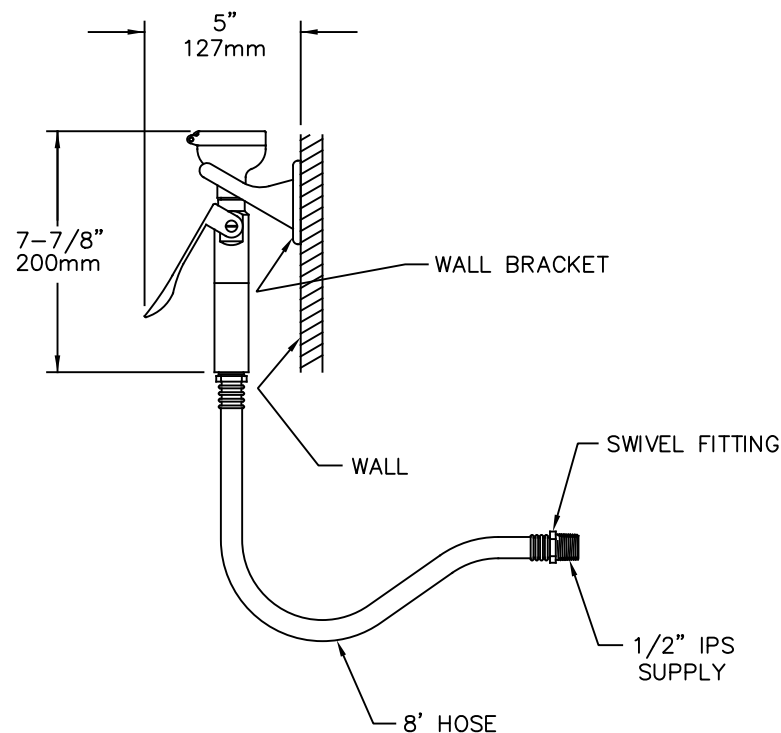
CLEAN VALVE SEAT AND WASHER THOROUGHLY, LUBRICATE 'O' RING WITH 'O' RING LUBE BEFORE REASSEMBLING.

ITEM NO.	QUANTITY	DESCRIPTION
①	1	CAM OPERATOR
②	2	'O' RING FOR CAM
③	1	OPERATOR STEM
④	1	SEAT WASHER
⑤	1	HOLDER WASHER
⑥	1	SCREW
⑦	1	'O' RING
⑧	1	SPRING

VALVE REPAIR DETAIL
MODEL VRK SP248
OPTIONAL



WALL BRACKET DETAIL





Haws
Since 1906

1455 KLEPPE LANE
SPARKS, NEVADA 89431
(775) 359-4712 FAX (775) 359-7424
E-MAIL: HAWS@HAWSCO.COM
WEBSITE: WWW.HAWSCO.COM

ECN NO. REVISED PER BY: ECN: 6002 JL		MODEL(S)		PART NUMBER	
DRAWN: CH		DATE: 05/20/91		8901B	
APPROVED: JL		DATE: 07/11/24		0002080191.D	
EYE/FACE WASH BODY SPRAY				REVISION	
SCALE: NA				10	
DRAWING TYPE: INSTALLATION				SHEET 1 OF 1	