

## FEATURES & BENEFITS

### CONSTRUCTION

Heavy-duty cast iron bowl with a glossy white enamel finish is designed for the toughest of applications, and at the same time is gentle to all users with its soft rounded corners. Unit also ships with vandal-resistant bottom plates to provide added peace of mind.

### BOTTLE FILLER

Vandal-resistant, 14-gauge Type 304 stainless steel bottle filler housing with push button operation and 1 gpm (3.78 L) laminar flow.

### INTEGRATED TRAP

All cast brass 1-1/4" NPT adjustable traps completely concealed inside bottom plates for easy installation and lack of unwanted access.

### HIGH CAPACITY DRAIN

Combined low profile design and the use of three bubblers supply the needs of many, which is perfect for schools and other high traffic areas.

### BUBBLER HEADS

Polished chrome-plated brass bubbler heads with integral basin shank for added strength. Shielded, angled stream opening provides a steady, sanitary source of drinking water at .45 gm.

### DRINKING FOUNTAIN VALVES

The push-button activated valves offer the only all stainless steel valve body that is machined out of solid bar stock, is fully serviceable through the front of the push button assembly offering access to the water control cartridge and integral water supply strainer, and with front access to the water stream height adjustment for easy maintenance without having to remove the valve. Operating pressure range of 30 to 90 psi (2.1 to 6.2 bar).

### VANDAL RESISTANT

The bubbler heads, push buttons, drain strainer and bottom plate are locked in place, discouraging unwanted vandal tampering.

## OPTIONS

- Water Filter: Model 6480 filter kit with 3000 gallon carbon block filter, filter head, and mounting bracket.
- Mounting Plate: Model 6700R, on-wall mounting plate for model 1920W.
- Mounting Plate: Model 6700, in-wall mounting plate for model 1920W.
- Remote Drinking Fountain Water chiller: Model HCR8, 8 gph (30.3 L) remote water chiller provides instantaneous cooling to meet a continuous demand for chilled water.

For more information, visit [www.hawsc.com](http://www.hawsc.com) or call (888) 640-4297.



## SPECIFICATIONS

### 1435 / 1920W

Order these items to make up Model 1435-1920W white enameled-iron three bubbler drinking fountain and bottle filler shown above.

## APPLICATIONS

Model 1435-1920W wall mounted vandal-resistant drinking fountain and bottle filler shall include a white enameled-iron basin mounted with twin galvanized cast-iron wall brackets, vandal-resistant push-button operated stainless steel valves with front-accessible cartridge and flow adjustment, 100% lead-free waterways, triple polished chrome-plated brass vandal-resistant bubbler heads, 1 gpm (3.78 L) bottle filler laminar flow, polished chrome-plated brass vandal-resistant waste strainer, vandal-resistant bottom plates, and chrome-plated 1-1/2" NPT trap. The bottle filler requires a mounting plate; either the Haws model 6700 in-wall or the 6700R on-wall support plate. Haws manufactures drinking fountains, faucets and electric water coolers to be lead-free by all known definitions including NSF/ANSI/CAN 61- Section 9, NSF/ANSI/CAN 372, California Proposition 65, and the Federal Safe Drinking Water Act. Product is compliant to California Health and Safety Code 116875 (AB 1953-2006), and 116876 (AB 100) "NSF/ANSI/CAN 61: Q ≤ 1".

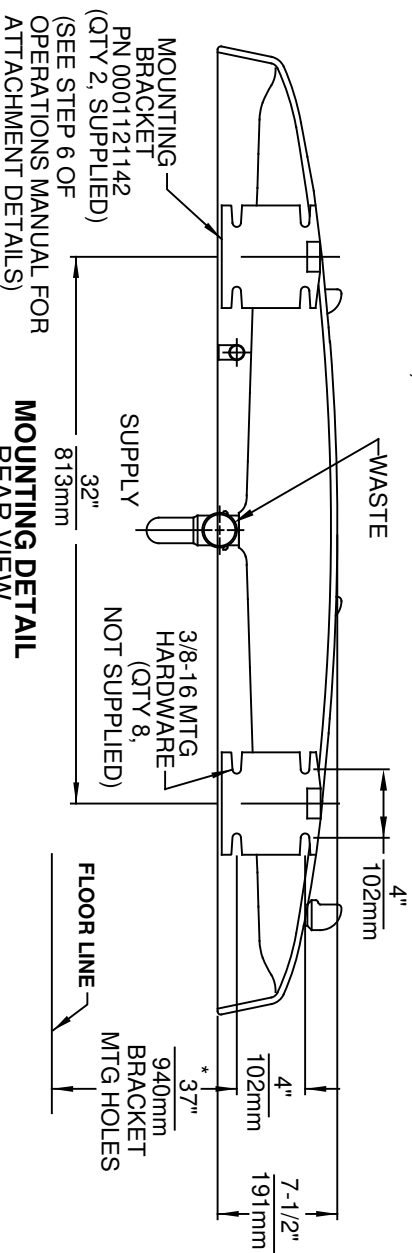
**The bottle filler requires a mounting plate; either the Haws model 6700 in-wall or the 6700R on-wall support plate.**



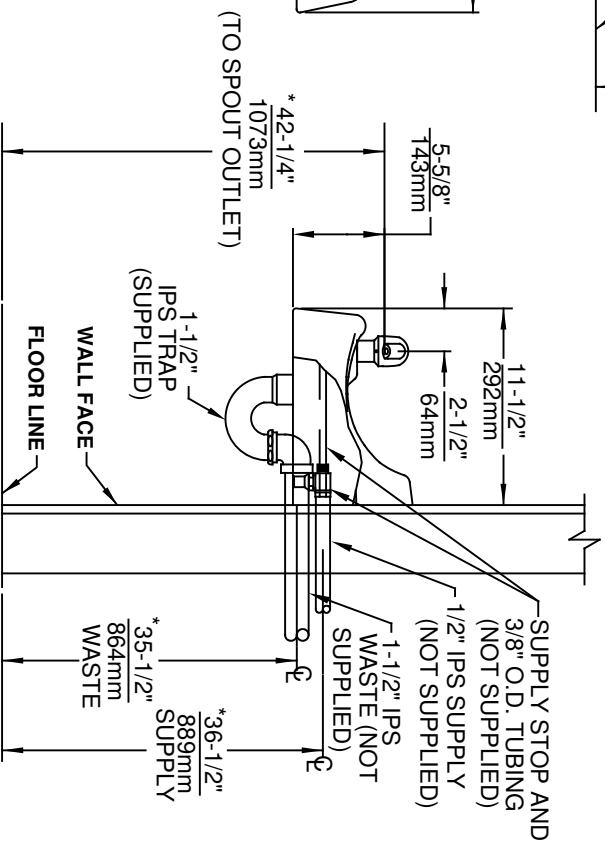
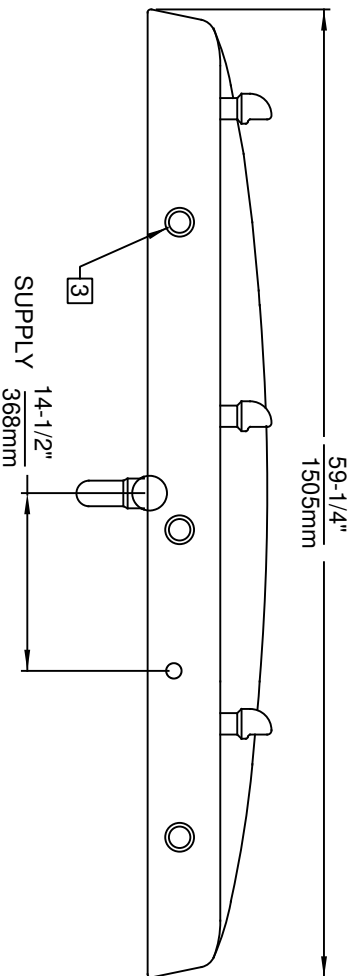
**NOTES:**

1. ROUGH-IN DIMENSIONS MAY VARY ±1/4" (6.4mm)
2. WHEN INSTALLING THIS UNIT LOCAL, STATE OR FEDERAL CODES SHOULD BE ADHERED TO. FOR INSTALLATION HEIGHTS OTHER THAN SHOWN, DIMENSIONS MARKED (\*) MUST BE ADJUSTED ACCORDINGLY.
- 3 REFER TO 5874 SERIES OPERATION AND MAINTENANCE MANUAL FOR PUSH BUTTON AND VALVE INSTALLATION/MAINTENANCE INSTRUCTIONS.

(NOTES CONTINUED ON SHEET 2 OF 2)



**MOUNTING DETAIL REAR VIEW**

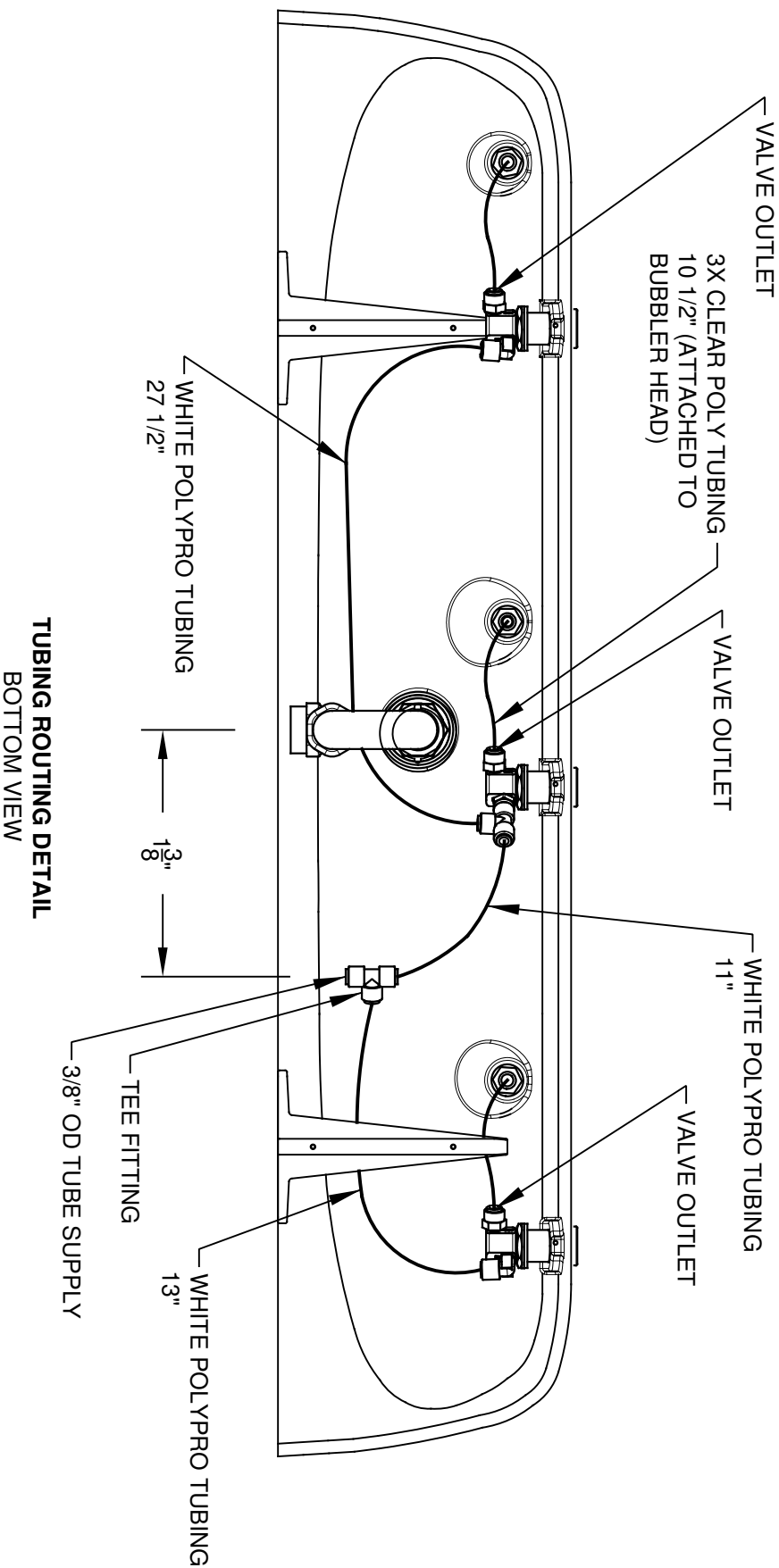


1435  
THREE BUBBLER FOUNTAIN



ECN NO. REVISED PER BY:	MODEL(S)	1435
DRAWN: ECN: S188	DATE: 01-01-91	CHK'D: JP
CIL	DATE: 07/06/17	SCALE: 1:1
APPROVED: FV	SCALE: 1:1	DRAWING TYPE: INSTALLATION
	SIZE: A	SHEET: 1 OF 2
		REVISION: 17

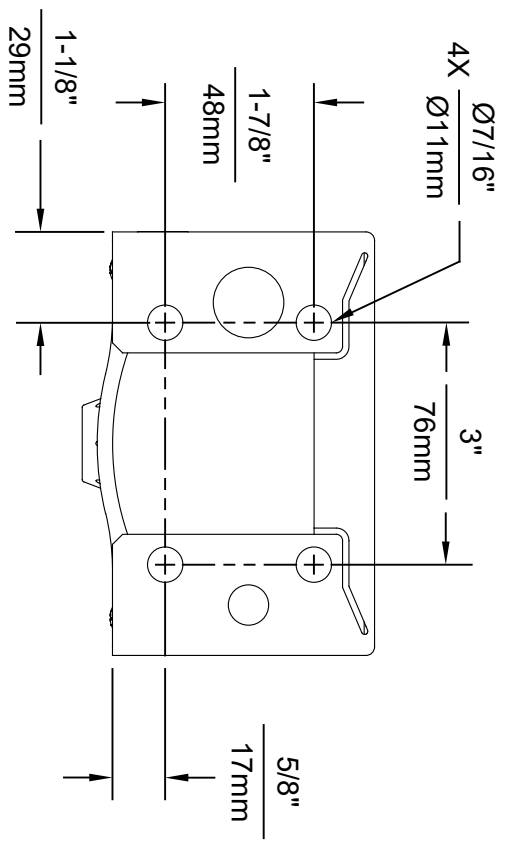
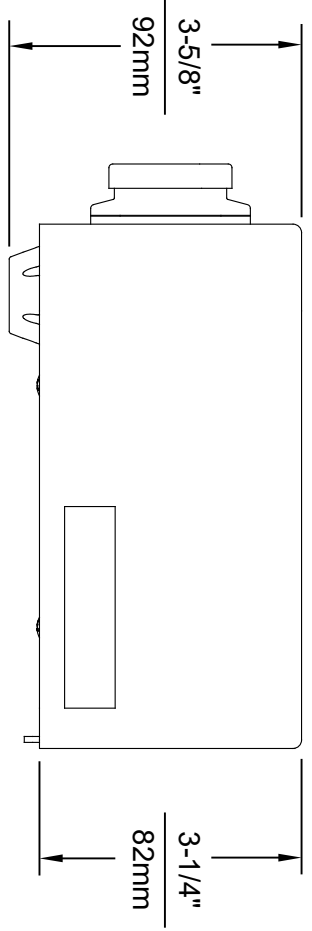
NOTES: (CONTINUED)

4. CONNECT WHITE "POLYPROPYLENE" TUBING ON PRESSURE SIDE (INLET) OF VALVE.
5. CONNECT CLEAR "POLYETHYLENE" TUBING ON FREE FLOW SIDE (VALVE TO BUBBLER HEAD) ONLY.

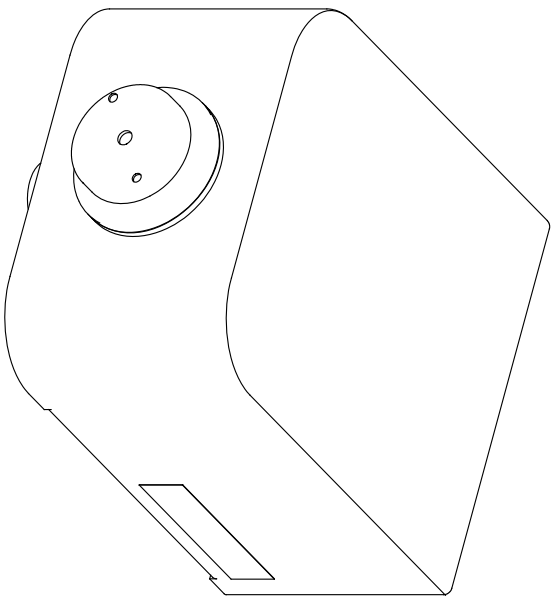
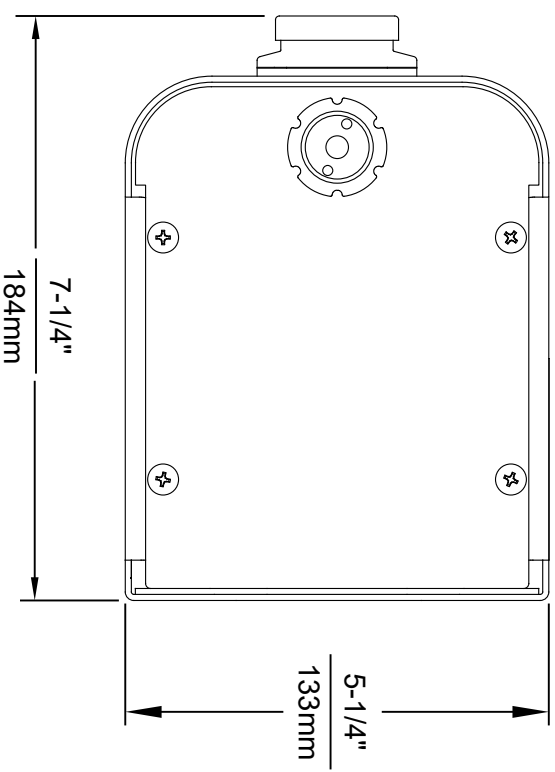


TUBING ROUTING DETAIL  
BOTTOM VIEW

			
1459 KLEPPE LANE SPARKS, NEVADA, 89431 (775) 359-4712 FAX (775) 359-7424 E-MAIL: HAWS@HAWS.CO.COM WEBSITE: WWW.HAWS.CO.COM			
ECN NO. REVISED PER BY:	MODEL(S)	1435	PART NUMBER
5188	THREE BUBBLER FOUNTAIN		0002076860.D
DATE: 11-01-91	CHK'D: VWC		REVISION: 17
APPROVED: FV	SCALE: 1:11	DRAWING TYPE: INSTALLATION	SHEET 2 OF 2



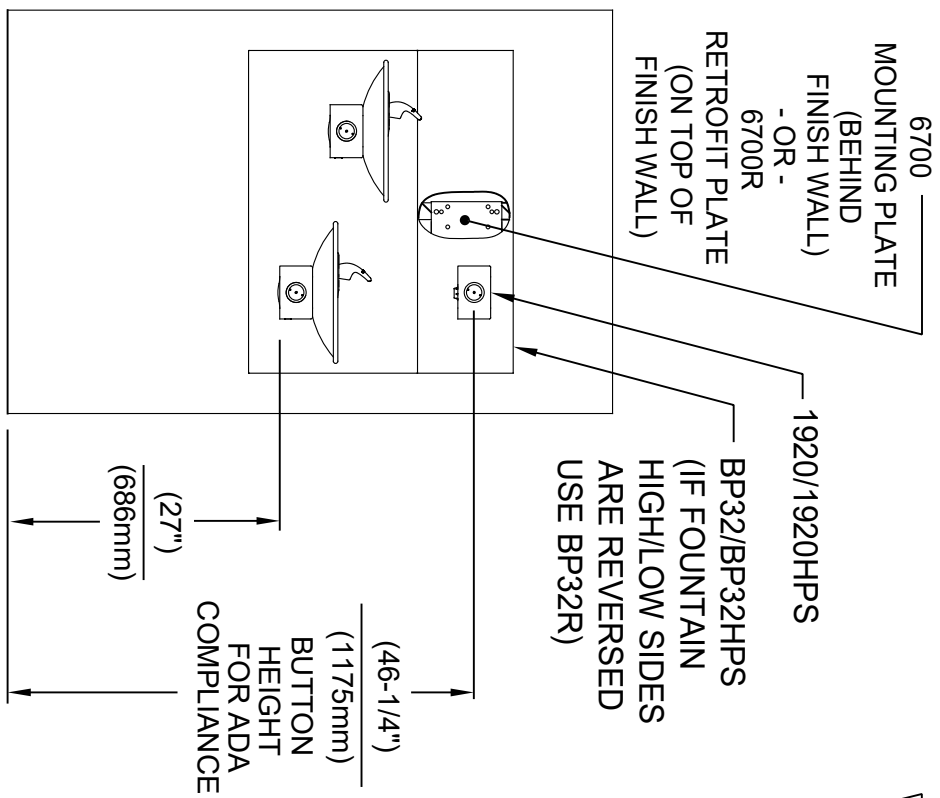
1920 MOUNTING HOLE LOCATIONS



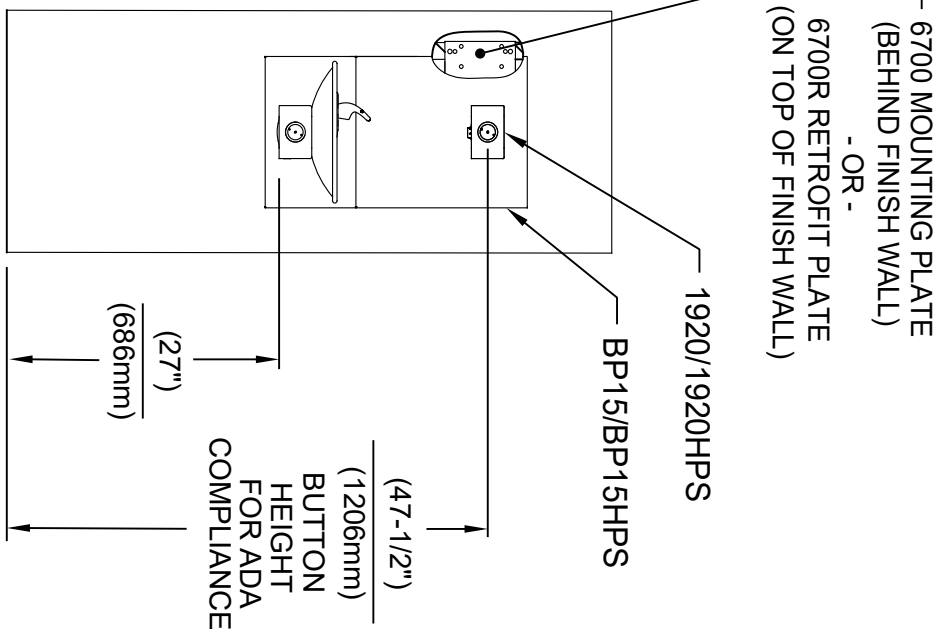
NOTES:

1. SEE SEPARATE INSTALLATION DRAWINGS FOR MOUNTING PLATES AND BACKPANELS
2. WHEN INSTALLING THIS UNIT, LOCAL, STATE OR FEDERAL CODES SHOULD BE ADHERED TO FOR INSTALLATION LOCATIONS, WASTE & SUPPLY REQUIREMENTS OTHER THAN SHOWN.

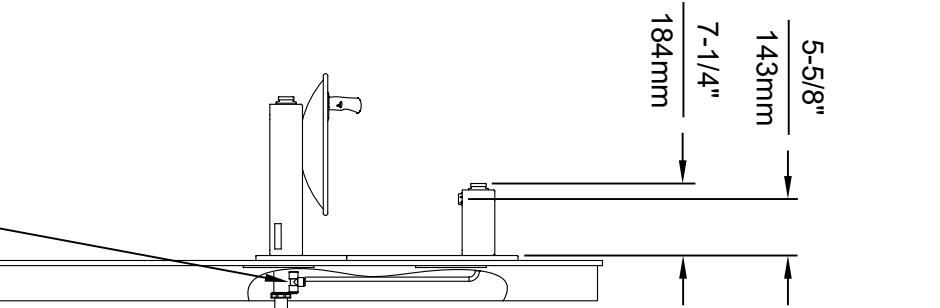
		<b>Haws</b>	
1459 KLEPPE LANE SPARKS, NEVADA, 89431 (775) 359-4712 FAX (775) 359-7424 E-MAIL: HAWS@HAWSCO.COM WEBSITE: WWW.HAWSCO.COM		MODEL(S) 1920/1920HPS/1920W	
ECN NO. REVISED PER BY: 5081 FV	ECN. 5744 FV	DATE: 05/25/16	CHKD: BMM
APPROVED: FV	DATE: 10/1/21	SCALE: N/A	DRAWING TYPE: INSTALLATION
PART NUMBER 0510000490.D	REVISION 10	SIZE: A	SHEET: 1 OF 7



**INSTALLATION ABOVE HAWS 1011 & H1011.8 SERIES**

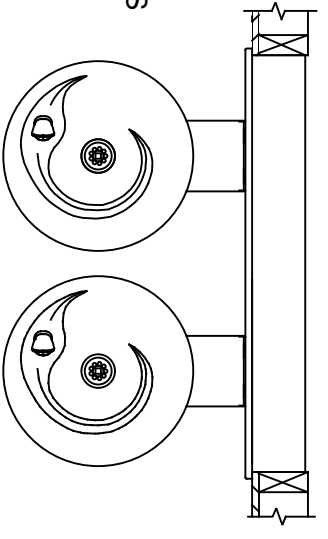


**INSTALLATION ABOVE HAWS 1001 & H1001.8 SERIES**



3/8" O.D. SUPPLY TUBING AND 3/8" O.D. PUSH-IN TEE SUPPLIED. (CONNECT TO FOUNTAIN SUPPLY LINE)

- \* IF YOUR FOUNTAIN IS THIS STYLE USE THESE DIMENSIONS
1. SEE SEPARATE INSTALLATION DRAWINGS FOR MOUNTING PLATES AND BACKPANELS
  2. WHEN INSTALLING THIS UNIT, LOCAL, STATE OR FEDERAL CODES SHOULD BE ADHERED TO FOR INSTALLATION LOCATIONS, WASTE & SUPPLY REQUIREMENTS OTHER THAN SHOWN.



		<b>Haws</b>	
1459 KLEPPE LANE SPARKS, NEVADA 89431 (775) 359-4712 FAX (775) 359-7424 E-MAIL: HAWS@HAWSCO.COM WEBSITE: WWW.HAWSCO.COM		MODEL(S) 1920/1920HPS/1920W	
ECN NO. REVISED PER BY: 5081 DRAWN: MD APPROVED: FV	ECN: 5744 DATE: 01/20/17 CHKD: FV BWM	DATE: 10/1/21	SCALE: N/A
PART NUMBER: 0510000490.D		REVISION: 10	SHEET: 2 OF 7